

UNITED STATES BANKRUPTCY COURT

SOUTHERN DISTRICT OF FLORIDA

*51 S.W. 1st Avenue
Room 1401
Miami, FL 33130*

*Karen Eddy
Clerk of Court*



MONTHLY STATISTICAL REPORT
SEPTEMBER 2004

MONTHLY STATISTICAL REPORT

TABLE OF CONTENTS

	<i>page</i>
<i>I. MONTHLY SARD SUMMARY REPORT</i>	<i>2</i>
<i>II. BK CASE FILINGS SUMMARY REPORT</i>	<i>3</i>
<i>III. BK CASE CLOSINGS SUMMARY REPORT</i>	<i>4</i>
<i>IV. AP CASE FILINGS SUMMARY REPORT</i>	<i>5</i>
<i>V. AP CASE CLOSINGS SUMMARY REPORT</i>	<i>6</i>
<i>VI. BK PRO SE CASES FILING SUMMARY REPORT</i>	<i>7</i>
<i>VII. PENDING CASELOAD REPORT BY JUDGE/CHAPTER</i>	<i>8</i>
<i>VIII. DIVISIONAL CASELOAD REPORT</i>	<i>9</i>
<i>IX. CASE FILING BREAKDOWN BY COUNTY</i>	<i>10</i>
<i>X. BREAKDOWN BY NATURE OF DEBTOR</i>	<i>11</i>
<i>XI. BREAKDOWN BY COUNTY / NATURE - CONSUMER</i>	<i>12</i>
<i>XII. BREAKDOWN BY COUNTY / NATURE - BUSINESS</i>	<i>13</i>
<i>XIII. SUMMARIES AND GRAPHS</i>	<i>14 - 18</i>

SEPTEMBER 2004
MONTHLY SARD REPORT SUMMARY

2

I. BC101 REPORT OF BANKRUPTCY CASES

	AJC	SHF	PGH	RAM	RBR	TOTAL
Pending Prior Month	7,787	4,806	5,193	7,767	5,052	30,605
Cases Filed	445	246	318	440	324	1,773
Reopened	6	2	9	15	17	49
Split Cases	0	0	0	0	0	0
Trans. In	0	0	2	0	0	2
Reassigned To	3	3	0	2	0	8
Trans. Out	0	0	0	0	0	0
Reassigned From	2	0	3	3	0	8
Cases Closed	759	358	412	673	464	2,666
Cases Pending	7,480	4,699	5,107	7,548	4,929	29,763

II. BC109 REPORT OF ADVERSARY CASES

	AJC	SHF	PGH	RAM	RBR	TOTAL
Pending Prior Month	118	152	213	228	163	874
Cases Filed	7	14	12	16	29	78
Reassigned To	0	1	0	0	0	1
Cases Reopened	0	0	1	0	0	1
Cases Closed	11	9	18	36	17	91
Reassigned From	0	0	1	0	0	1
Cases Pending	114	158	207	208	175	862

IV. MONTHLY REPORT OF TRIALS AND OTHER ACTIVITY

	Contested Proceedings	Miscellaneous Proceedings	Total Hours in Court
AJC	6	30	36
SHF	6	21	27
PGH	0	22	22
RAM	10	35	45
RBR	2	33	35
Total	24	141	165

UNITED STATES BANKRUPTCY COURT
Southern District of Florida

CASE FILINGS SUMMARY REPORT
For Cases Filed from 09/01/2004 to 09/30/2004
Run Date: 10/04/04

Run Time 12:46

Divisional Breakdown

	Dade					Broward					Palm Beach					
	Ch	7	11	12	13	304	7	11	12	13	304	7	11	12	13	304
AJC	374		3	0	68	0	0	0	0	0	0	0	0	0	0	0
SHF	0		0	0	0	0	0	0	0	0	206	0	0	40	0	
PGH	0		0	0	36	0	187	2	0	50	0	43	0	0	0	0
RAM	371		2	0	67	0	0	0	0	0	0	0	0	0	0	0
RBR	0		0	0	35	0	233	3	0	53	0	0	0	0	0	0

Tot	745		5	0	206	0	420	5	0	103	0	249	0	0	40	0
Divisional Totals					956					528					289	

Totals By Judge

	Chapter 7	Section 304	Chapter 11	Chapter 12	Chapter 13	Totals
AJC	374	0	3	0	68	445
SHF	206	0	0	0	40	246
PGH	230	0	2	0	86	318
RAM	371	0	2	0	67	440
RBR	233	0	3	0	88	324

Totals	1414	0	10	0	349	

Grand Total: 1773 + 2 = 1775

"TOTAL DOES NOT INCLUDE SPLIT, TRANSFERRED IN CASES AND INTRA-DISTRICT CASES FILED PRIOR TO THIS MONTH"

1 1

UNITED STATES BANKRUPTCY COURT
Southern District of Florida

CASE CLOSING SUMMARY REPORT
For Cases Closed from 09/01/2004 to 09/30/2004
Run Date: 10/04/04

Run Time 12:56

Divisional Breakdown

		Dade					Broward					Palm Beach				
Ch		7	11	12	13	304	7	11	12	13	304	7	11	12	13	304
AJC	554	10	0	195	0	0	0	0	0	0	0	0	0	0	0	0
SHF	0	0	0	0	0	0	0	0	0	0	352	3	0	3	0	
PGH	2	0	0	20	0	207	1	0	39	0	141	2	0	0	0	
RAM	510	1	0	150	0	0	0	0	0	0	12	0	0	0	0	
RBR	3	0	0	37	0	371	1	0	52	0	0	0	0	0	0	

Tot	1069	11	0	402	0	578	2	0	91	0	505	5	0	3	0	
Divisional Totals		1482					671					513				

Totals By Judge

	Chapter 7	Section 304	Chapter 11	Chapter 12	Chapter 13	Totals
AJC	554	0	10	0	195	759
SHF	352	0	3	0	3	358
PGH	350	0	3	0	59	412
RAM	522	0	1	0	150	673
RBR	374	0	1	0	89	464

Totals	2152	0	18	0	496	
Grand Total:	2666					

UNITED STATES BANKRUPTCY COURT
Southern District of FloridaAdversary Proceedings Case Filing Report
For Cases Filed from 09/01/2004 to 09/30/2004
Run Time 10:16

Run Date: 10/04/04

Divisional Breakdown

	Dade	Broward	Palm Beach	Totals
AJC	7	0	0	7
SHF	0	0	14	14
PGH	0	4	8	12
RAM	16	0	0	16
RBR	1	28	0	29

Totals	24	32	22	78

UNITED STATES BANKRUPTCY COURT
Southern District of FloridaAdversary Proceedings Case Closing Report
For Cases Closed from 09/01/2004 to 09/30/2004
Run Time 10:16

Run Date: 10/04/04

Divisional Breakdown

	Dade	Broward	Palm Beach	Totals
AJC	11	0	0	11
SHF	0	0	9	9
PGH	1	8	9	18
RAM	36	0	0	36
RBR	0	17	0	17

Totals	48	25	18	91

UNITED STATES BANKRUPTCY COURT
SOUTHERN DISTRICT OF FLORIDA

BANKRUPTCY PRO SE CASES FILING SUMMARY REPORT
For Cases Filed from 09/01/2004 to 09/30/2004

Run Date: 10/04/04

Run Time 10:34

	Divisional Breakdown															
	Dade					Broward					Palm Beach					
Ch	7	11	12	13	304	7	11	12	13	304	7	11	12	13	304	
AJC	15	0	0	9	0	0	0	0	0	0	0	0	0	0	0	
SHF	0	0	0	0	0	0	0	0	0	0	55	0	0	6	0	
PGH	0	0	0	13	0	37	0	0	11	0	13	0	0	0	0	
RAM	13	0	0	10	0	0	0	0	0	0	0	0	0	0	0	
RBR	0	0	0	13	0	43	0	0	9	0	0	0	0	0	0	

Tot	28	0	0	45	0	80	0	0	20	0	68	0	0	6	0	
Divisional Totals					73					100					74	

	Totals By Judge					Totals	
	Chapter 7	Section 304	Chapter 11	Chapter 12	Chapter 13		
AJC	15	0	0	0	9	24	
SHF	55	0	0	0	6	61	
PGH	50	0	0	0	24	74	
RAM	13	0	0	0	10	23	
RBR	43	0	0	0	22	65	

Totals	176	0	0	0	71	247	
Grand Total:	247						

PENDING CASELOAD REPORTS BY JUDGE/CHAPTER
SEPTEMBER 2004

AJC	7	11	12	13	304	ACT	TOTALS
Pending Prior Month	2,502	103	1	5,179	2	0	7,787
Cases Filed	374	3	0	68	0	0	445
Reopened	4	0	0	2	0	0	6
Split Cases	0	0	0	0	0	0	0
Transferred In	0	0	0	0	0	0	0
Reassigned To	2	0	0	1	0	0	3
Converted To	11	0	0	2	0	0	13
Transferred Out	0	0	0	0	0	0	0
Reassigned From	2	0	0	0	0	0	2
Converted From	2	1	0	10	0	0	13
Cases Closed	554	10	0	195	0	0	759
Total Pending	2,335	95	1	5,047	2	0	7,480

SHF	7	11	12	13	304	ACT	TOTALS
Pending Prior Month	1,871	23	0	2,906	6	0	4,806
Cases Filed	206	0	0	40	0	0	246
Reopened	2	0	0	0	0	0	2
Split Cases	0	0	0	0	0	0	0
Transferred In	0	0	0	0	0	0	0
Reassigned To	0	0	0	3	0	0	3
Converted To	1	0	0	1	0	0	2
Transferred Out	0	0	0	0	0	0	0
Reassigned From	0	0	0	0	0	0	0
Converted From	1	0	0	1	0	0	2
Cases Closed	352	3	0	3	0	0	358
Total Pending	1,727	20	0	2,946	6	0	4,699

PGH	7	11	12	13	304	ACT	TOTALS
Pending Prior Month	1,895	155	0	3,142	1	0	5,193
Cases Filed	230	2	0	86	0	0	318
Reopened	6	1	0	2	0	0	9
Split Cases	0	0	0	0	0	0	0
Transferred In	1	0	0	1	0	0	2
Reassigned To	0	0	0	0	0	0	0
Converted To	6	0	0	5	0	0	11
Transferred Out	0	0	0	0	0	0	0
Reassigned From	0	0	0	3	0	0	3
Converted From	5	1	0	5	0	0	11
Cases Closed	350	3	0	59	0	0	412
Total Pending	1,783	154	0	3,169	1	0	5,107

RAM	7	11	12	13	304	ACT	TOTALS
Pending Prior Month	2,392	144	0	5,229	2	0	7,767
Cases Filed	371	2	0	67	0	0	440
Reopened	6	0	0	9	0	0	15
Split Cases	0	0	0	0	0	0	0
Transferred In	0	0	0	0	0	0	0
Reassigned To	2	0	0	0	0	0	2
Converted To	5	0	0	4	0	0	9
Transferred Out	0	0	0	0	0	0	0
Reassigned From	2	0	0	1	0	0	3
Converted From	4	1	0	4	0	0	9
Cases Closed	522	1	0	150	0	0	673
Total Pending	2,248	144	0	5,154	2	0	7,548

RBR	7	11	12	13	304	ACT	TOTALS
Pending Prior Month	1,775	71	0	3,206	0	0	5,052
Cases Filed	233	3	0	88	0	0	324
Reopened	9	0	0	8	0	0	17
Split Cases	0	0	0	0	0	0	0
Transferred In	0	0	0	0	0	0	0
Reassigned To	0	0	0	0	0	0	0
Converted To	8	0	0	1	0	0	9
Transferred Out	0	0	0	0	0	0	0
Reassigned From	0	0	0	0	0	0	0
Converted From	1	1	0	7	0	0	9
Cases Closed	374	1	0	89	0	0	464
Total Pending	1,650	72	0	3,207	0	0	4,929

GRAND TOTAL:	9,743	485	1	19,523	11	0	29,763
---------------------	--------------	------------	----------	---------------	-----------	----------	---------------

AJC PENDING CASE SUMMARY

CHAPTER	DADE DIVISION	BROWARD DIVISION	PALM BEACH DIVISION	TOTAL
7	2,332	1	2	2,335
11	92	3	0	95
12	1	0	0	1
13	5,047	0	0	5,047
304	2	0	0	2
Sub-Total	7,474	4	2	7,480
Act Cases	0	0	0	0
GRAND TOTALS	7,474	4	2	7,480

SHF PENDING CASE SUMMARY

CHAPTER	DADE DIVISION	BROWARD DIVISION	PALM BEACH DIVISION	TOTAL
7	2	2	1,723	1,727
11	0	0	20	20
12	0	0	0	0
13	0	0	2,946	2,946
304	0	0	6	6
Sub-Total	2	2	4,695	4,699
Act Cases	0	0	0	0
GRAND TOTALS	2	2	4,695	4,699

PGH PENDING CASE SUMMARY

CHAPTER	DADE DIVISION	BROWARD DIVISION	PALM BEACH DIVISION	TOTAL
7	30	1,114	639	1,783
11	1	107	46	154
12	0	0	0	0
13	954	2,214	1	3,169
304	0	1	0	1
Sub-Total	985	3,436	686	5,107
Act Cases	0	0	0	0
GRAND TOTALS	985	3,436	686	5,107

RAM PENDING CASE SUMMARY

CHAPTER	DADE DIVISION	BROWARD DIVISION	PALM BEACH DIVISION	TOTAL
7	2,246	0	2	2,248
11	143	0	1	144
12	0	0	0	0
13	5,154	0	0	5,154
304	2	0	0	2
Sub-Total	7,545	0	3	7,548
Act Cases	0	0	0	0
GRAND TOTALS	7,545	0	3	7,548

RBR PENDING CASE SUMMARY

CHAPTER	DADE DIVISION	BROWARD DIVISION	PALM BEACH DIVISION	TOTAL
7	19	1,631	0	1,650
11	0	72	0	72
12	0	0	0	0
13	944	2,262	1	3,207
304	0	0	0	0
Sub-Total	963	3,965	1	4,929
Act Cases	0	0	0	0
GRAND TOTALS	963	3,965	1	4,929

DISTRICT TOTALS	16,969	7,407	5,387	29,763
------------------------	---------------	--------------	--------------	---------------

CASE FILING SUMMARY BY COUNTY

DADE COUNTY - 12025

	7	11	12	13	304	TOTAL
AJC	365	3	0	68	0	436
SHF	0	0	0	0	0	0
PGH	0	0	0	37	0	37
RAM	360	2	0	65	0	427
RBR	0	0	0	35	0	35
Sub-Total	725	5	0	205	0	935

MONROE COUNTY - 12087

	7	11	12	13	304	TOTAL
AJC	9	0	0	0	0	9
SHF	0	0	0	0	0	0
PGH	0	0	0	0	0	0
RAM	11	0	0	2	0	13
RBR	0	0	0	0	0	0
Sub-Total	20	0	0	2	0	22

Division Total 957

BROWARD COUNTY - 12011

	7	11	12	13	304	TOTAL
AJC	0	0	0	0	0	0
SHF	0	0	0	0	0	0
PGH	187	2	0	50	0	239
RAM	0	0	0	0	0	0
RBR	233	3	0	53	0	289
Sub-Total	420	5	0	103	0	528

Division Total 528

HIGHLANDS COUNTY - 12055

	7	11	12	13	304	TOTAL
AJC	0	0	0	0	0	0
SHF	2	0	0	2	0	4
PGH	0	0	0	0	0	0
RAM	0	0	0	0	0	0
RBR	0	0	0	0	0	0
Sub-Total	2	0	0	2	0	4

INDIAN RIVER COUNTY - 12061

	7	11	12	13	304	TOTAL
AJC	0	0	0	0	0	0
SHF	7	0	0	2	0	9
PGH	0	0	0	0	0	0
RAM	0	0	0	0	0	0
RBR	0	0	0	0	0	0
Sub-Total	7	0	0	2	0	9

MARTIN COUNTY - 12085

	7	11	12	13	304	TOTAL
AJC	11	0	0	0	0	11
SHF	0	0	0	0	0	0
PGH	1	0	0	0	0	1
RAM	0	0	0	0	0	0
RBR	0	0	0	0	0	0
Sub-Total	12	0	0	0	0	12

OKEECHOBEE COUNTY - 12093

	7	11	12	13	304	TOTAL
AJC	0	0	0	0	0	0
SHF	0	0	0	5	0	5
PGH	0	0	0	0	0	0
RAM	0	0	0	0	0	0
RBR	0	0	0	0	0	0
Sub-Total	0	0	0	5	0	5

PALM BEACH COUNTY - 12099

	7	11	12	13	304	TOTAL
AJC	0	0	0	0	0	0
SHF	162	0	0	28	0	190
PGH	43	0	0	0	0	43
RAM	0	0	0	0	0	0
RBR	0	0	0	0	0	0
Sub-Total	205	0	0	28	0	233

ST. LUCIE - 12111

	7	11	12	13	304	TOTAL
AJC	0	0	0	0	0	0
SHF	24	0	0	3	0	27
PGH	0	0	0	0	0	0
RAM	0	0	0	0	0	0
RBR	0	0	0	0	0	0
Sub-Total	24	0	0	3	0	27

Division Total 290

GRAND TOTAL	1415	10	0	350	0	1775
--------------------	-------------	-----------	----------	------------	----------	-------------

SEPTEMBER 2004

CASE FILING SUMMARY BY NATURE OF DEBTOR/DIVISION

CHAPTER	BUSINESS				CONSUMER				TOTAL
	DADE	BROWARD	PALM BCH	DIV. TOTAL	DADE	BROWARD	PALM BCH	DIV. TOTAL	
7	15	10	6	31	730	410	244	1384	1415
11	4	5	0	9	1	0	0	1	10
12	0	0	0	0	0	0	0	0	0
13	0	0	0	0	207	103	40	350	350
304	0	0	0	0	0	0	0	0	0
TOTAL	19	15	6	40	938	513	284	1735	1775

DIVISIONAL BUSINESS CASE FILING SUMMARY

DADE DIVISION

CHAPTER	AJC	SHF	PGH	RAM	RBR	TOTAL
7	7	0	0	8	0	15
11	2	0	0	2	0	4
12	0	0	0	0	0	0
13	0	0	0	0	0	0
304	0	0	0	0	0	0
Sub-Total	9	0	0	10	0	19

BROWARD DIVISION

CHAPTER	AJC	SHF	PGH	RAM	RBR	TOTAL
7	0	0	7	0	3	10
11	0	0	2	0	3	5
12	0	0	0	0	0	0
13	0	0	0	0	0	0
304	0	0	0	0	0	0
Sub-Total	0	0	9	0	6	15

PALM BEACH DIVISION

CHAPTER	AJC	SHF	PGH	RAM	RBR	TOTAL
7	0	6	0	0	0	6
11	0	0	0	0	0	0
12	0	0	0	0	0	0
13	0	0	0	0	0	0
304	0	0	0	0	0	0
Sub-Total	0	6	0	0	0	6
GRAND TOTAL	9	6	9	10	6	40

DIVISIONAL CONSUMER CASE FILING SUMMARY

DADE DIVISION

CHAPTER	AJC	SHF	PGH	RAM	RBR	TOTAL
7	367	0	0	363	0	730
11	1	0	0	0	0	1
12	0	0	0	0	0	0
13	68	0	37	67	35	207
304	0	0	0	0	0	0
Sub-Total	436	0	37	430	35	938

BROWARD DIVISION

CHAPTER	AJC	SHF	PGH	RAM	RBR	TOTAL
7	0	0	180	0	230	410
11	0	0	0	0	0	0
12	0	0	0	0	0	0
13	0	0	50	0	53	103
304	0	0	0	0	0	0
Sub-Total	0	0	230	0	283	513

PALM BEACH DIVISION

CHAPTER	AJC	SHF	PGH	RAM	RBR	TOTAL
7	0	200	44	0	0	244
11	0	0	0	0	0	0
12	0	0	0	0	0	0
13	0	40	0	0	0	40
304	0	0	0	0	0	0
Sub-Total	0	240	44	0	0	284
GRAND TOTAL	436	240	311	430	318	1735

CASE FILING SUMMARY BY COUNTY / CONSUMER - BUSINESS

CONSUMERS

DADE COUNTY - 12025

	7	11	12	13	304	TOTAL
AJC	358	1	0	68	0	427
SHF	0	0	0	0	0	0
PGH	0	0	0	37	0	37
RAM	352	0	0	65	0	417
RBR	0	0	0	35	0	35
Sub-Total	710	1	0	205	0	916

MONROE COUNTY - 12087

	7	11	12	13	304	TOTAL
AJC	9	0	0	0	0	9
SHF	0	0	0	0	0	0
PGH	0	0	0	0	0	0
RAM	11	0	0	2	0	13
RBR	0	0	0	0	0	0
Sub-Total	20	0	0	2	0	22

0 Division
938 Total

BROWARD COUNTY - 12011

	7	11	12	13	304	TOTAL
AJC	0	0	0	0	0	0
SHF	0	0	0	0	0	0
PGH	180	0	0	50	0	230
RAM	0	0	0	0	0	0
RBR	230	0	0	53	0	283
Sub-Total	410	0	0	103	0	513

0 Division
513 Total

HIGHLANDS COUNTY - 12055

	7	11	12	13	304	TOTAL
AJC	0	0	0	0	0	0
SHF	2	0	0	2	0	4
PGH	0	0	0	0	0	0
RAM	0	0	0	0	0	0
RBR	0	0	0	0	0	0
Sub-Total	2	0	0	2	0	4

INDIAN RIVER COUNTY - 12061

	7	11	12	13	304	TOTAL
AJC	0	0	0	0	0	0
SHF	7	0	0	2	0	9
PGH	0	0	0	0	0	0
RAM	0	0	0	0	0	0
RBR	0	0	0	0	0	0
Sub-Total	7	0	0	2	0	9

MARTIN COUNTY - 12085

	7	11	12	13	304	TOTAL
AJC	11	0	0	0	0	11
SHF	0	0	0	0	0	0
PGH	1	0	0	0	0	1
RAM	0	0	0	0	0	0
RBR	0	0	0	0	0	0
Sub-Total	12	0	0	0	0	12

OKEECHOBEE COUNTY - 12093

	7	11	12	13	304	TOTAL
AJC	0	0	0	0	0	0
SHF	0	0	0	5	0	5
PGH	0	0	0	0	0	0
RAM	0	0	0	0	0	0
RBR	0	0	0	0	0	0
Sub-Total	0	0	0	5	0	5

PALM BEACH COUNTY - 12099

	7	11	12	13	304	TOTAL
AJC	0	0	0	0	0	0
SHF	158	0	0	28	0	186
PGH	43	0	0	0	0	43
RAM	0	0	0	0	0	0
RBR	0	0	0	0	0	0
Sub-Total	201	0	0	28	0	229

ST. LUCIE - 12111

	7	11	12	13	304	TOTAL
AJC	0	0	0	0	0	0
SHF	22	0	0	3	0	25
PGH	0	0	0	0	0	0
RAM	0	0	0	0	0	0
RBR	0	0	0	0	0	0
Sub-Total	22	0	0	3	0	25

0 Division
284 Total

GRAND TOTAL	1384	1	0	350	0	1735
--------------------	-------------	----------	----------	------------	----------	-------------

CASE FILING SUMMARY BY COUNTY / CONSUMER - BUSINESS
BUSINESS

DADE COUNTY - 12025

	7	11	12	13	304	TOTAL
AJC	7	2	0	0	0	9
SHF	0	0	0	0	0	0
PGH	0	0	0	0	0	0
RAM	8	2	0	0	0	10
RBR	0	0	0	0	0	0
Sub-Total	15	4	0	0	0	19

MONROE COUNTY - 12087

	7	11	12	13	304	TOTAL
AJC	0	0	0	0	0	0
SHF	0	0	0	0	0	0
PGH	0	0	0	0	0	0
RAM	0	0	0	0	0	0
RBR	0	0	0	0	0	0
Sub-Total	0	0	0	0	0	0

0 Division
0 Total 19

BROWARD COUNTY - 12011

	7	11	12	13	304	TOTAL
AJC	0	0	0	0	0	0
SHF	0	0	0	0	0	0
PGH	7	2	0	0	0	9
RAM	0	0	0	0	0	0
RBR	3	3	0	0	0	6
Sub-Total	10	5	0	0	0	15

6 Division
15 Total 15

HIGHLANDS COUNTY - 12055

	7	11	12	13	304	TOTAL
AJC	0	0	0	0	0	0
SHF	0	0	0	0	0	0
PGH	0	0	0	0	0	0
RAM	0	0	0	0	0	0
RBR	0	0	0	0	0	0
Sub-Total	0	0	0	0	0	0

INDIAN RIVER COUNTY - 12061

	7	11	12	13	304	TOTAL
AJC	0	0	0	0	0	0
SHF	0	0	0	0	0	0
PGH	0	0	0	0	0	0
RAM	0	0	0	0	0	0
RBR	0	0	0	0	0	0
Sub-Total	0	0	0	0	0	0

MARTIN COUNTY - 12085

	7	11	12	13	304	TOTAL
AJC	0	0	0	0	0	0
SHF	0	0	0	0	0	0
PGH	0	0	0	0	0	0
RAM	0	0	0	0	0	0
RBR	0	0	0	0	0	0
Sub-Total	0	0	0	0	0	0

OKEECHOBEE COUNTY - 12093

	7	11	12	13	304	TOTAL
AJC	0	0	0	0	0	0
SHF	0	0	0	0	0	0
PGH	0	0	0	0	0	0
RAM	0	0	0	0	0	0
RBR	0	0	0	0	0	0
Sub-Total	0	0	0	0	0	0

PALM BEACH COUNTY - 12099

	7	11	12	13	304	TOTAL
AJC	0	0	0	0	0	0
SHF	4	0	0	0	0	4
PGH	0	0	0	0	0	0
RAM	0	0	0	0	0	0
RBR	0	0	0	0	0	0
Sub-Total	4	0	0	0	0	4

ST. LUCIE - 12111

	7	11	12	13	304	TOTAL
AJC	0	0	0	0	0	0
SHF	2	0	0	0	0	2
PGH	0	0	0	0	0	0
RAM	0	0	0	0	0	0
RBR	0	0	0	0	0	0
Sub-Total	2	0	0	0	0	2

0 Division
2 Total 6

GRAND TOTAL	31	9	0	0	0	40
--------------------	-----------	----------	----------	----------	----------	-----------

AJC	CH 7	CH 11	CH 12	CH 13	SEC 304	TOTAL
JAN	307	10	0	92	0	409
FEB	288	5	0	106	0	399
MAR	483	6	0	109	0	598
APR	424	2	0	113	0	539
MAY	497	2	0	96	0	595
JUN	470	3	0	118	0	591
JUL	425	2	0	82	0	509
AUG	452	1	0	99	0	552
SEP	374	3	0	68	0	445
OCT						0
NOV						0
DEC						0
TOTALS	3720	34	0	883	0	4637

SHF	CH 7	CH 11	CH 12	CH 13	SEC 304	TOTAL
JAN	269	1	0	76	0	346
FEB	267	3	0	109	0	379
MAR	376	3	0	107	0	486
APR	332	1	0	95	0	428
MAY	343	0	0	81	0	424
JUN	348	0	0	85	0	433
JUL	321	5	0	95	0	421
AUG	296	0	0	71	0	367
SEP	206	0	0	40	0	246
OCT						0
NOV						0
DEC						0
TOTALS	2758	13	0	759	0	3530

PGH	CH 7	CH 11	CH 12	CH 13	SEC 304	TOTAL
JAN	262	1	0	124	0	387
FEB	274	2	0	123	0	399
MAR	376	5	0	131	0	512
APR	352	1	0	120	0	473
MAY	334	1	0	111	0	446
JUN	354	4	0	108	0	466
JUL	316	7	0	87	0	410
AUG	291	2	0	88	0	381
SEP	231	2	0	87	0	320
OCT						0
NOV						0
DEC						0
TOTALS	2790	25	0	979	0	3794

RAM	CH 7	CH 11	CH 12	CH 13	SEC 304	TOTAL
JAN	305	7	0	91	0	403
FEB	287	7	0	103	0	397
MAR	483	3	0	113	0	599
APR	427	2	0	109	0	538
MAY	495	2	0	94	0	591
JUN	469	2	0	117	0	588
JUL	428	2	0	81	0	511
AUG	451	1	0	96	1	549
SEP	371	2	0	67	0	440
OCT						0
NOV						0
DEC						0
TOTALS	3716	28	0	871	1	4616

RBR	CH 7	CH 11	CH 12	CH 13	SEC 304	TOTAL
JAN	254	1	0	114	0	369
FEB	265	0	0	131	0	396
MAR	388	2	0	129	0	519
APR	347	0	0	118	0	465
MAY	329	2	0	110	0	441
JUN	362	1	0	111	0	474
JUL	303	1	0	85	0	389
AUG	297	1	0	91	0	389
SEP	233	3	0	88	0	324
OCT						0
NOV						0
DEC						0
TOTALS	2778	11	0	977	0	3766

**2004 YEAR-TO-DATE COMPARISON OF BANKRUPTCY CASE FILINGS
BY JUDGE**

	AJC	SHF	PGH	RAM	RBR	TOTAL
JAN	409	346	387	403	369	1914
FEB	399	379	399	397	396	1970
MAR	598	486	512	599	519	2714
APR	539	428	473	538	465	2443
MAY	595	424	446	591	441	2497
JUN	591	433	466	588	474	2552
JUL	509	421	410	511	389	2240
AUG	552	367	381	549	389	2238
SEP	445	246	320	440	324	1775
OCT	0	0	0	0	0	0
NOV	0	0	0	0	0	0
DEC	0	0	0	0	0	0
TOTALS	4637	3530	3794	4616	3766	20343
% of Total	22.79	17.35	18.65	22.69	18.51	

**2004 YEAR-TO-DATE COMPARISON OF BANKRUPTCY CASE FILINGS
BY JUDGE/CHAPTER**

	CH 7	CH 11	CH 12	CH 13	SEC 304	TOTAL
AJC	3720	34	0	883	0	4637
SHF	2758	13	0	759	0	3530
PGH	2790	25	0	979	0	3794
RAM	3716	28	0	871	1	4616
RBR	2778	11	0	977	0	3766
TOTALS	15762	111	0	4469	1	20343

CALENDAR YEAR-TO-DATE COMPARISON

	ENDING SEP 04	ENDING SEP 03	PERCENT CHANGE
Bankruptcy Case Filings	20343	24105	-15.61
Bankruptcy Case Closings	22600	23474	-3.72
Adversary Filings	1003	2442	-58.93
Adversary Closings	1492	1680	-11.19

12-MONTH/THREE YEAR COMPARISON

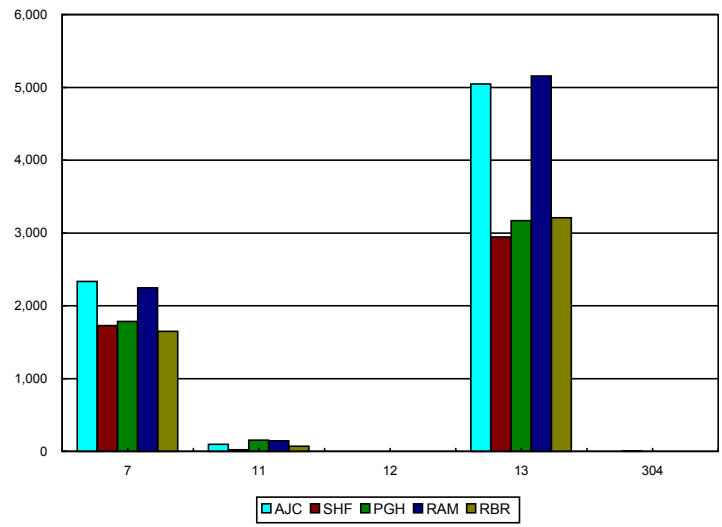
	ENDING SEP 04	ENDING SEP 03	ENDING SEP 02	% CHANGE 04/03	% CHANGE 04/02
Bankruptcy Case Filings	27427	32256	33993	-14.97	-19.32
Bankruptcy Case Closings	30488	31530	29882	-3.30	2.03
Adversary Filings	1332	2666	1414	-50.04	-5.80
Adversary Closings	2148	2031	1297	5.76	65.61

MONTHLY COMPARISON

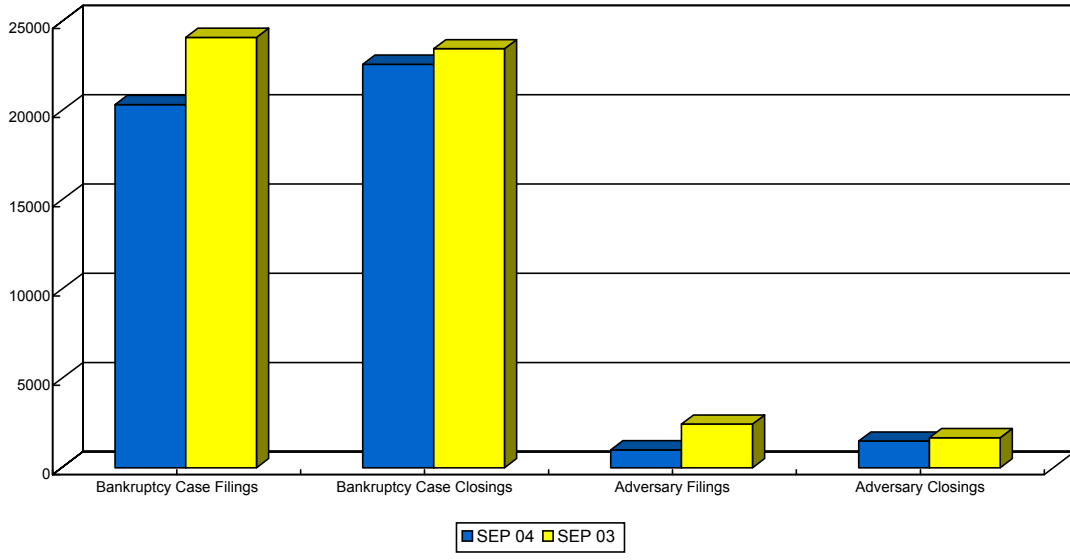
	SEP 04	SEP 03	PERCENT CHANGE
Bankruptcy Case Filings	1775	2651	-33.04
Bankruptcy Case Closings	2666	2818	-5.39
Adversary Filings	78	243	-67.90
Adversary Closings	91	221	-58.82

*Filings and Closings for Dade Division includes Monroe County
 Filings and Closings for Palm Beach Division includes Indian River, Highlands, Martin,
 St. Lucie & Okeechobee Counties*

TOTAL PENDING CASELOAD BY JUDGE/CHAPTER



CALENDAR YEAR-TO-DATE COMPARISON



12-MONTH/THREE YEAR COMPARISON

