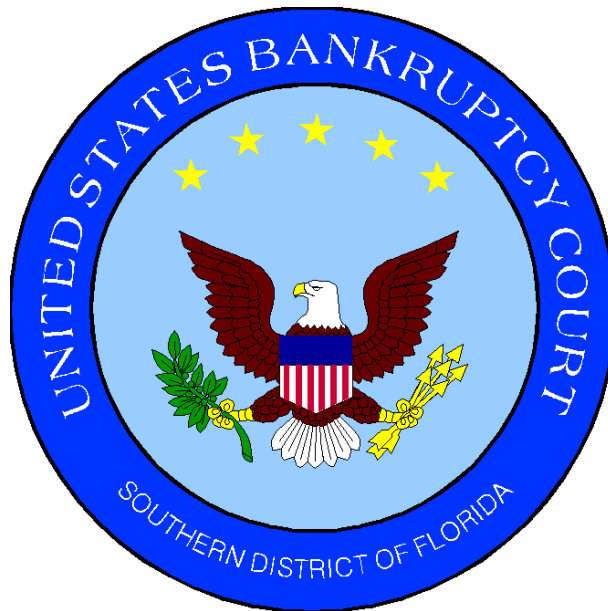


# UNITED STATES BANKRUPTCY COURT

## *SOUTHERN DISTRICT OF FLORIDA*

*51 S.W. 1st Avenue  
Room 1401  
Miami, FL 33130*

*Karen Eddy  
Clerk of Court*



**MONTHLY STATISTICAL REPORT**  
**AUGUST 2005**

# ***MONTHLY STATISTICAL REPORT***

## **TABLE OF CONTENTS**

	<i>page</i>
<i>I. MONTHLY SARD SUMMARY REPORT</i>	<i>2</i>
<i>II. BK CASE FILINGS SUMMARY REPORT</i>	<i>3</i>
<i>III. BK CASE CLOSINGS SUMMARY REPORT</i>	<i>4</i>
<i>IV. AP CASE FILINGS SUMMARY REPORT</i>	<i>5</i>
<i>V. AP CASE CLOSINGS SUMMARY REPORT</i>	<i>6</i>
<i>VI. BK PRO SE CASES FILING SUMMARY REPORT</i>	<i>7</i>
<i>VII. PENDING CASELOAD REPORT BY JUDGE/CHAPTER</i>	<i>8</i>
<i>VIII. DIVISIONAL CASELOAD REPORT</i>	<i>9</i>
<i>IX. CASE FILING BREAKDOWN BY COUNTY</i>	<i>10</i>
<i>X. BREAKDOWN BY NATURE OF DEBTOR</i>	<i>11</i>
<i>XI. BREAKDOWN BY COUNTY / NATURE - CONSUMER</i>	<i>12</i>
<i>XII. BREAKDOWN BY COUNTY / NATURE - BUSINESS</i>	<i>13</i>
<i>XIII. SUMMARIES AND GRAPHS</i>	<i>14 - 18</i>

**AUGUST 2005**  
**MONTHLY SARD REPORT SUMMARY**

**I. BC101 REPORT OF BANKRUPTCY CASES**

	<b>AJC</b>	<b>SHF</b>	<b>PGH</b>	<b>RAM</b>	<b>RBR</b>	<b>TOTAL</b>
<b>Pending Prior Month</b>	7,472	4,942	4,072	7,555	5,665	29,706
<b>Cases Filed</b>	798	477	491	796	508	3,070
<b>Reopened</b>	10	5	7	3	9	34
<b>Split Cases</b>	0	0	0	0	2	2
<b>Trans. In</b>	0	1	1	1	0	3
<b>Reassigned To</b>	6	2	0	0	0	8
<b>Trans. Out</b>	0	0	1	0	0	1
<b>Reassigned From</b>	0	0	2	6	0	8
<b>Cases Closed</b>	817	629	523	788	653	3,410
<b>Cases Pending</b>	7,469	4,798	4,045	7,561	5,531	29,404

**II. BC109 REPORT OF ADVERSARY CASES**

	<b>AJC</b>	<b>SHF</b>	<b>PGH</b>	<b>RAM</b>	<b>RBR</b>	<b>TOTAL</b>
<b>Pending Prior Month</b>	116	138	373	115	78	820
<b>Cases Filed</b>	9	22	19	10	10	70
<b>Trans. In</b>	0	0	0	0	0	0
<b>Reassigned To</b>	0	0	0	0	0	0
<b>Cases Reopened</b>	0	0	0	0	0	0
<b>Cases Closed</b>	24	21	108	14	8	175
<b>Reassigned From</b>	0	0	0	0	0	0
<b>Cases Pending</b>	101	139	284	111	80	715

**IV. MONTHLY REPORT OF TRIALS AND OTHER ACTIVITY**

	<b>Contested Proceedings</b>	<b>Miscellaneous Proceedings</b>	<b>Total Hours in Court</b>
<b>AJC</b>	4	25	29
<b>SHF</b>	15	53	68
<b>PGH</b>	10	19	29
<b>RAM</b>	11	29	40
<b>RBR</b>	9	25	34
<b>Total</b>	49	151	200

UNITED STATES BANKRUPTCY COURT  
Southern District of Florida

CASE FILINGS SUMMARY REPORT  
For Cases Filed from 08/01/2005 to 08/31/2005  
Run Date: 09/01/05

Run Time 14:50

Divisional Breakdown

Ch	Dade					Broward					Palm Beach				
	7	11	12	13	304	7	11	12	13	304	7	11	12	13	304
AJC	698	4	0	96	0	0	0	0	0	0	0	0	0	0	0
SHF	0	0	0	0	0	0	0	0	0	0	416	0	0	61	0
PGH	0	0	0	0	0	273	0	0	63	0	153	2	0	0	0
RAM	697	3	0	96	0	0	0	0	0	0	0	0	0	0	0
RBR	0	0	0	29	0	415	0	0	63	1	0	0	0	0	0
-----															
Tot	1395	7	0	221	0	688	0	0	126	1	569	2	0	61	0
Divisional Totals	1623					815					632				

Totals By Judge

	Chapter 7	Section 304	Chapter 11	Chapter 12	Chapter 13	Totals
AJC	698	0	4	0	96	798
SHF	416	0	0	0	61	477
PGH	426	0	2	0	63	491
RAM	697	0	3	0	96	796
RBR	415	1	0	0	92	508
-----						
Totals	2652	1	9	0	408	

Grand Total:

3070 +4 = 3070

"TOTAL DOES NOT INCLUDE SPLIT, TRANSFERRED IN CASES AND (INTRA-DISTRICT CASES FILED PRIOR TO THIS MONTH"

(2)

(+2)

UNITED STATES BANKRUPTCY COURT  
Southern District of Florida

CASE CLOSING SUMMARY REPORT  
For Cases Closed from 08/01/2005 to 08/31/2005  
Run Date: 09/01/05

Run Time 14:00

## Divisional Breakdown

Ch	7	11	Dade			Broward			Palm Beach						
			12	13	304	7	11	12	13	304	7	11	12	13	304
AJC	681	3	0	132	0	1	0	0	0	0	0	0	0	0	0
SHF	0	0	0	0	0	0	0	0	0	486	3	0	140	0	0
PGH	0	0	0	0	0	283	0	0	120	1	119	0	0	0	0
RAM	694	2	0	92	0	0	0	0	0	0	0	0	0	0	0
RBR	5	0	0	53	0	486	2	0	106	0	1	0	0	0	0
-----															
Tot	1380	5	0	277	0	770	2	0	226	1	606	3	0	140	0
Divisional Totals			1662			999			749						

## Totals By Judge

	Chapter 7	Section 304	Chapter 11	Chapter 12	Chapter 13	Totals
AJC	682	0	3	0	132	817
SHF	486	0	3	0	140	629
PGH	402	1	0	0	120	523
RAM	694	0	2	0	92	788
RBR	492	0	2	0	159	653
-----						
Totals	2756	1	10	0	643	
Grand Total:	3410					

UNITED STATES BANKRUPTCY COURT  
Southern District of FloridaAdversary Proceedings Case Filing Report  
For Cases Filed from 08/01/2005 to 08/31/2005  
Run Time 15:45

Run Date: 09/01/05

## Divisional Breakdown

	Dade	Broward	Palm Beach	Totals
AJC	9	0	0	9
SHF	0	0	22	22
PGH	0	13	6	19
RAM	10	0	0	10
RBR	0	10	0	10
-----				
Totals	19	23	28	70

UNITED STATES BANKRUPTCY COURT  
Southern District of FloridaAdversary Proceedings Case Closing Report  
For Cases Closed from 08/01/2005 to 08/31/2005  
Run Time 15:46

Run Date: 09/01/05

## Divisional Breakdown

	Dade	Broward	Palm Beach	Totals
AJC	24	0	0	24
SHF	0	0	21	21
PGH	0	58	50	108
RAM	14	0	0	14
RBR	0	8	0	8
-----				
Totals	38	66	71	175

UNITED STATES BANKRUPTCY COURT  
SOUTHERN DISTRICT OF FLORIDA

BANKRUPTCY PRO SE CASES FILING SUMMARY REPORT  
For Cases Filed from 08/01/2005 to 08/31/2005

Run Date: 09/01/05

Run Time 15:52

## Divisional Breakdown

Ch	Dade					Broward					Palm Beach				
	7	11	12	13	304	7	11	12	13	304	7	11	12	13	304
AJC	25	0	0	8	0	0	0	0	0	0	0	0	0	0	0
SHF	0	0	0	0	0	0	0	0	0	0	93	0	0	2	0
PGH	0	0	0	0	0	44	0	0	7	0	40	0	0	0	0
RAM	28	0	0	9	0	0	0	0	0	0	0	0	0	0	0
RBR	0	0	0	8	0	74	0	0	9	0	0	0	0	0	0
-----															
Tot	53	0	0	25	0	118	0	0	16	0	133	0	0	2	0
Divisional Totals					78					134					135

## Totals By Judge

	Chapter 7	Section 304	Chapter 11	Chapter 12	Chapter 13	Totals
AJC	25	0	0	0	8	33
SHF	93	0	0	0	2	95
PGH	84	0	0	0	7	91
RAM	28	0	0	0	9	37
RBR	74	0	0	0	17	91
-----						
Totals	304	0	0	0	43	347
Grand Total:	347					



**PENDING CASELOAD REPORTS BY JUDGE/CHAPTER**  
**AUGUST 2005**

AJC	7	11	12	13	304	ACT	TOTALS
Pending Prior Month	3,072	70	1	4,325	4	0	7,472
Cases Filed	698	4	0	96	0	0	798
Reopened	5	0	0	5	0	0	10
Split Cases	0	0	0	0	0	0	0
Transferred In	0	0	0	0	0	0	0
Reassigned To	6	0	0	0	0	0	6
Converted To	13	0	0	3	0	0	16
Transferred Out	0	0	0	0	0	0	0
Reassigned From	0	0	0	0	0	0	0
Converted From	3	1	0	12	0	0	16
Cases Closed	682	3	0	132	0	0	817
<b>Total Pending</b>	<b>3,109</b>	<b>70</b>	<b>1</b>	<b>4,285</b>	<b>4</b>	<b>0</b>	<b>7,469</b>

SHF	7	11	12	13	304	ACT	TOTALS
Pending Prior Month	2,273	30	0	2,637	2	0	4,942
Cases Filed	416	0	0	61	0	0	477
Reopened	4	0	0	1	0	0	5
Split Cases	0	0	0	0	0	0	0
Transferred In	1	0	0	0	0	0	1
Reassigned To	0	0	0	2	0	0	2
Converted To	9	0	0	3	0	0	12
Transferred Out	0	0	0	0	0	0	0
Reassigned From	0	0	0	0	0	0	0
Converted From	3	2	0	7	0	0	12
Cases Closed	486	3	0	140	0	0	629
<b>Total Pending</b>	<b>2,214</b>	<b>25</b>	<b>0</b>	<b>2,557</b>	<b>2</b>	<b>0</b>	<b>4,798</b>

PGH	7	11	12	13	304	ACT	TOTALS
Pending Prior Month	2,108	139	0	1,824	1	0	4,072
Cases Filed	426	2	0	63	0	0	491
Reopened	7	0	0	0	0	0	7
Split Cases	0	0	0	0	0	0	0
Transferred In	1	0	0	0	0	0	1
Reassigned To	0	0	0	0	0	0	0
Converted To	4	1	0	3	0	0	8
Transferred Out	1	0	0	0	0	0	1
Reassigned From	0	0	0	2	0	0	2
Converted From	4	1	0	3	0	0	8
Cases Closed	402	0	0	120	1	0	523
<b>Total Pending</b>	<b>2,139</b>	<b>141</b>	<b>0</b>	<b>1,765</b>	<b>0</b>	<b>0</b>	<b>4,045</b>

RAM	7	11	12	13	304	ACT	TOTALS
Pending Prior Month	3,021	76	0	4,454	4	0	7,555
Cases Filed	697	3	0	96	0	0	796
Reopened	2	0	0	1	0	0	3
Split Cases	0	0	0	0	0	0	0
Transferred In	0	0	0	1	0	0	1
Reassigned To	0	0	0	0	0	0	0
Converted To	9	0	0	2	0	0	11
Transferred Out	0	0	0	0	0	0	0
Reassigned From	6	0	0	0	0	0	6
Converted From	2	0	0	9	0	0	11
Cases Closed	694	2	0	92	0	0	788
<b>Total Pending</b>	<b>3,027</b>	<b>77</b>	<b>0</b>	<b>4,453</b>	<b>4</b>	<b>0</b>	<b>7,561</b>

RBR	7	11	12	13	304	ACT	TOTALS
Pending Prior Month	2,124	54	0	3,487	0	0	5,665
Cases Filed	415	0	0	92	1	0	508
Reopened	7	0	0	2	0	0	9
Split Cases	2	0	0	0	0	0	2
Transferred In	0	0	0	0	0	0	0
Reassigned To	0	0	0	0	0	0	0
Converted To	5	1	0	5	0	0	11
Transferred Out	0	0	0	0	0	0	0
Reassigned From	0	0	0	0	0	0	0
Converted From	6	0	0	5	0	0	11
Cases Closed	492	2	0	159	0	0	653
<b>Total Pending</b>	<b>2,055</b>	<b>53</b>	<b>0</b>	<b>3,422</b>	<b>1</b>	<b>0</b>	<b>5,531</b>

<b>GRAND TOTAL:</b>	<b>12,544</b>	<b>366</b>	<b>1</b>	<b>16,482</b>	<b>11</b>	<b>0</b>	<b>29,404</b>
---------------------	---------------	------------	----------	---------------	-----------	----------	---------------

**AJC PENDING CASE SUMMARY**

CHAPTER	DADE DIVISION	BROWARD DIVISION	PALM BEACH DIVISION	TOTAL
7	3,109	0	0	3,109
11	68	2	0	70
12	1	0	0	1
13	4,285	0	0	4,285
304	4	0	0	4
<b>Sub-Total</b>	<b>7,467</b>	<b>2</b>	<b>0</b>	<b>7,469</b>
<b>Act Cases</b>	<b>0</b>	<b>0</b>	<b>0</b>	<b>0</b>
<b>GRAND TOTALS</b>	<b>7,467</b>	<b>2</b>	<b>0</b>	<b>7,469</b>

**SHF PENDING CASE SUMMARY**

CHAPTER	DADE DIVISION	BROWARD DIVISION	PALM BEACH DIVISION	TOTAL
7	0	0	2,214	2,214
11	0	0	25	25
12	0	0	0	0
13	0	0	2,557	2,557
304	0	0	2	2
<b>Sub-Total</b>	<b>0</b>	<b>0</b>	<b>4,798</b>	<b>4,798</b>
<b>Act Cases</b>	<b>0</b>	<b>0</b>	<b>0</b>	<b>0</b>
<b>GRAND TOTALS</b>	<b>0</b>	<b>0</b>	<b>4,798</b>	<b>4,798</b>

**PGH PENDING CASE SUMMARY**

CHAPTER	DADE DIVISION	BROWARD DIVISION	PALM BEACH DIVISION	TOTAL
7	11	1,281	847	2,139
11	1	111	29	141
12	0	0	0	0
13	0	1,765	0	1,765
304	0	0	0	0
<b>Sub-Total</b>	<b>12</b>	<b>3,157</b>	<b>876</b>	<b>4,045</b>
<b>Act Cases</b>	<b>0</b>	<b>0</b>	<b>0</b>	<b>0</b>
<b>GRAND TOTALS</b>	<b>12</b>	<b>3,157</b>	<b>876</b>	<b>4,045</b>

**RAM PENDING CASE SUMMARY**

CHAPTER	DADE DIVISION	BROWARD DIVISION	PALM BEACH DIVISION	TOTAL
7	3,025	0	2	3,027
11	76	0	1	77
12	0	0	0	0
13	4,453	0	0	4,453
304	4	0	0	4
<b>Sub-Total</b>	<b>7,558</b>	<b>0</b>	<b>3</b>	<b>7,561</b>
<b>Act Cases</b>	<b>0</b>	<b>0</b>	<b>0</b>	<b>0</b>
<b>GRAND TOTALS</b>	<b>7,558</b>	<b>0</b>	<b>3</b>	<b>7,561</b>

**RBR PENDING CASE SUMMARY**

CHAPTER	DADE DIVISION	BROWARD DIVISION	PALM BEACH DIVISION	TOTAL
7	34	2,021	0	2,055
11	0	53	0	53
12	0	0	0	0
13	1,606	1,816	0	3,422
304	0	1	0	1
<b>Sub-Total</b>	<b>1,640</b>	<b>3,891</b>	<b>0</b>	<b>5,531</b>
<b>Act Cases</b>	<b>0</b>	<b>0</b>	<b>0</b>	<b>0</b>
<b>GRAND TOTALS</b>	<b>1,640</b>	<b>3,891</b>	<b>0</b>	<b>5,531</b>

<b>DISTRICT TOTALS</b>	<b>16,677</b>	<b>7,050</b>	<b>5,677</b>	<b>29,404</b>
------------------------	---------------	--------------	--------------	---------------

CASE FILING SUMMARY BY COUNTY

DADE COUNTY - 12025

	7	11	12	13	304	TOTAL
AJC	688	4	0	92	0	784
SHF	0	0	0	0	0	0
PGH	0	0	0	0	0	0
RAM	685	3	0	97	0	785
RBR	0	0	0	29	0	29
<b>Sub-Total</b>	<b>1373</b>	<b>7</b>	<b>0</b>	<b>218</b>	<b>0</b>	<b>1598</b>

MONROE COUNTY - 12087

	7	11	12	13	304	TOTAL
AJC	10	0	0	4	0	14
SHF	0	0	0	0	0	0
PGH	0	0	0	0	0	0
RAM	12	0	0	0	0	12
RBR	0	0	0	0	0	0
<b>Sub-Total</b>	<b>22</b>	<b>0</b>	<b>0</b>	<b>4</b>	<b>0</b>	<b>26</b>

Division Total 1624

BROWARD COUNTY - 12011

	7	11	12	13	304	TOTAL
AJC	0	0	0	0	0	0
SHF	0	0	0	0	0	0
PGH	273	0	0	63	0	336
RAM	0	0	0	0	0	0
RBR	417	0	0	63	1	481
<b>Sub-Total</b>	<b>690</b>	<b>0</b>	<b>0</b>	<b>126</b>	<b>1</b>	<b>817</b>

Division Total 817

HIGHLANDS COUNTY - 12055

	7	11	12	13	304	TOTAL
AJC	0	0	0	0	0	0
SHF	42	0	0	5	0	47
PGH	0	0	0	0	0	0
RAM	0	0	0	0	0	0
RBR	0	0	0	0	0	0
<b>Sub-Total</b>	<b>42</b>	<b>0</b>	<b>0</b>	<b>5</b>	<b>0</b>	<b>47</b>

INDIAN RIVER COUNTY - 12061

	7	11	12	13	304	TOTAL
AJC	0	0	0	0	0	0
SHF	29	0	0	2	0	31
PGH	0	0	0	0	0	0
RAM	0	0	0	0	0	0
RBR	0	0	0	0	0	0
<b>Sub-Total</b>	<b>29</b>	<b>0</b>	<b>0</b>	<b>2</b>	<b>0</b>	<b>31</b>

MARTIN COUNTY - 12085

	7	11	12	13	304	TOTAL
AJC	0	0	0	0	0	0
SHF	19	0	0	2	0	21
PGH	7	0	0	0	0	7
RAM	0	0	0	0	0	0
RBR	0	0	0	0	0	0
<b>Sub-Total</b>	<b>26</b>	<b>0</b>	<b>0</b>	<b>2</b>	<b>0</b>	<b>28</b>

OKEECHOBEE COUNTY - 12093

	7	11	12	13	304	TOTAL
AJC	0	0	0	0	0	0
SHF	7	0	0	0	0	7
PGH	0	0	0	0	0	0
RAM	0	0	0	0	0	0
RBR	0	0	0	0	0	0
<b>Sub-Total</b>	<b>7</b>	<b>0</b>	<b>0</b>	<b>0</b>	<b>0</b>	<b>7</b>

PALM BEACH COUNTY - 12099

	7	11	12	13	304	TOTAL
AJC	0	0	0	0	0	0
SHF	255	0	0	36	0	291
PGH	145	2	0	0	0	147
RAM	0	0	0	0	0	0
RBR	0	0	0	0	0	0
<b>Sub-Total</b>	<b>400</b>	<b>2</b>	<b>0</b>	<b>36</b>	<b>0</b>	<b>438</b>

ST. LUCIE - 12111

	7	11	12	13	304	TOTAL
AJC	0	0	0	0	0	0
SHF	65	0	0	16	0	81
PGH	1	0	0	0	0	1
RAM	0	0	0	0	0	0
RBR	0	0	0	0	0	0
<b>Sub-Total</b>	<b>66</b>	<b>0</b>	<b>0</b>	<b>16</b>	<b>0</b>	<b>82</b>

Division Total 633

<b>GRAND TOTAL</b>	<b>2655</b>	<b>9</b>	<b>0</b>	<b>409</b>	<b>1</b>	<b>3074</b>
--------------------	-------------	----------	----------	------------	----------	-------------

**AUGUST 2005**  
**CASE FILING SUMMARY BY NATURE OF DEBTOR/DIVISION**

CHAPTER	BUSINESS				CONSUMER				TOTAL
	DADE	BROWARD	PALM BCH	DIV. TOTAL	DADE	BROWARD	PALM BCH	DIV. TOTAL	
7	17	11	4	32	1378	679	566	2623	2655
11	6	0	2	8	1	0	0	1	9
12	0	0	0	0	0	0	0	0	0
13	0	0	0	0	222	126	61	409	409
304	0	0	0	0	0	1	0	1	1
<b>TOTAL</b>	<b>23</b>	<b>11</b>	<b>6</b>	<b>40</b>	<b>1601</b>	<b>806</b>	<b>627</b>	<b>3034</b>	<b>3074</b>

**DIVISIONAL BUSINESS CASE FILING SUMMARY**

**DADE DIVISION**

CHAPTER	AJC	SHF	PGH	RAM	RBR	TOTAL
7	6	0	0	11	0	17
11	4	0	0	2	0	6
12	0	0	0	0	0	0
13	0	0	0	0	0	0
304	0	0	0	0	0	0
<b>Sub-Total</b>	<b>10</b>	<b>0</b>	<b>0</b>	<b>13</b>	<b>0</b>	<b>23</b>

**BROWARD DIVISION**

CHAPTER	AJC	SHF	PGH	RAM	RBR	TOTAL
7	0	0	4	0	7	11
11	0	0	0	0	0	0
12	0	0	0	0	0	0
13	0	0	0	0	0	0
304	0	0	0	0	0	0
<b>Sub-Total</b>	<b>0</b>	<b>0</b>	<b>4</b>	<b>0</b>	<b>7</b>	<b>11</b>

**PALM BEACH DIVISION**

CHAPTER	AJC	SHF	PGH	RAM	RBR	TOTAL
7	0	1	3	0	0	4
11	0	0	2	0	0	2
12	0	0	0	0	0	0
13	0	0	0	0	0	0
304	0	0	0	0	0	0
<b>Sub-Total</b>	<b>0</b>	<b>1</b>	<b>5</b>	<b>0</b>	<b>0</b>	<b>6</b>
<b>GRAND TOTAL</b>	<b>10</b>	<b>1</b>	<b>9</b>	<b>13</b>	<b>7</b>	<b>40</b>

**DIVISIONAL CONSUMER CASE FILING SUMMARY**

**DADE DIVISION**

CHAPTER	AJC	SHF	PGH	RAM	RBR	TOTAL
7	692	0	0	686	0	1378
11	0	0	0	1	0	1
12	0	0	0	0	0	0
13	96	0	0	97	29	222
304	0	0	0	0	0	0
<b>Sub-Total</b>	<b>788</b>	<b>0</b>	<b>0</b>	<b>784</b>	<b>29</b>	<b>1601</b>

**BROWARD DIVISION**

CHAPTER	AJC	SHF	PGH	RAM	RBR	TOTAL
7	0	0	269	0	410	679
11	0	0	0	0	0	0
12	0	0	0	0	0	0
13	0	0	63	0	63	126
304	0	0	0	0	1	1
<b>Sub-Total</b>	<b>0</b>	<b>0</b>	<b>332</b>	<b>0</b>	<b>474</b>	<b>806</b>

**PALM BEACH DIVISION**

CHAPTER	AJC	SHF	PGH	RAM	RBR	TOTAL
7	0	416	150	0	0	566
11	0	0	0	0	0	0
12	0	0	0	0	0	0
13	0	61	0	0	0	61
304	0	0	0	0	0	0
<b>Sub-Total</b>	<b>0</b>	<b>477</b>	<b>150</b>	<b>0</b>	<b>0</b>	<b>627</b>
<b>GRAND TOTAL</b>	<b>788</b>	<b>477</b>	<b>482</b>	<b>784</b>	<b>503</b>	<b>3034</b>

CASE FILING SUMMARY BY COUNTY / CONSUMER - BUSINESS

CONSUMERS

DADE COUNTY - 12025

	7	11	12	13	304	TOTAL
AJC	683	0	0	92	0	775
SHF	0	0	0	0	0	0
PGH	0	0	0	0	0	0
RAM	674	1	0	97	0	772
RBR	0	0	0	29	0	29
<b>Sub-Total</b>	<b>1357</b>	<b>1</b>	<b>0</b>	<b>218</b>	<b>0</b>	<b>1576</b>

MONROE COUNTY - 12087

	7	11	12	13	304	TOTAL
AJC	9	0	0	4	0	13
SHF	0	0	0	0	0	0
PGH	0	0	0	0	0	0
RAM	12	0	0	0	0	12
RBR	0	0	0	0	0	0
<b>Sub-Total</b>	<b>21</b>	<b>0</b>	<b>0</b>	<b>4</b>	<b>0</b>	<b>25</b>

0 Division  
Total 1601

BROWARD COUNTY - 12011

	7	11	12	13	304	TOTAL
AJC	0	0	0	0	0	0
SHF	0	0	0	0	0	0
PGH	269	0	0	63	0	332
RAM	0	0	0	0	0	0
RBR	410	0	0	63	1	474
<b>Sub-Total</b>	<b>679</b>	<b>0</b>	<b>0</b>	<b>126</b>	<b>1</b>	<b>806</b>

Division  
Total 806

HIGHLANDS COUNTY - 12055

	7	11	12	13	304	TOTAL
AJC	0	0	0	0	0	0
SHF	42	0	0	5	0	47
PGH	0	0	0	0	0	0
RAM	0	0	0	0	0	0
RBR	0	0	0	0	0	0
<b>Sub-Total</b>	<b>42</b>	<b>0</b>	<b>0</b>	<b>5</b>	<b>0</b>	<b>47</b>

INDIAN RIVER COUNTY - 12061

	7	11	12	13	304	TOTAL
AJC	0	0	0	0	0	0
SHF	29	0	0	2	0	31
PGH	0	0	0	0	0	0
RAM	0	0	0	0	0	0
RBR	0	0	0	0	0	0
<b>Sub-Total</b>	<b>29</b>	<b>0</b>	<b>0</b>	<b>2</b>	<b>0</b>	<b>31</b>

MARTIN COUNTY - 12085

	7	11	12	13	304	TOTAL
AJC	0	0	0	0	0	0
SHF	19	0	0	2	0	21
PGH	7	0	0	0	0	7
RAM	0	0	0	0	0	0
RBR	0	0	0	0	0	0
<b>Sub-Total</b>	<b>26</b>	<b>0</b>	<b>0</b>	<b>2</b>	<b>0</b>	<b>28</b>

OKEECHOBEE COUNTY - 12093

	7	11	12	13	304	TOTAL
AJC	0	0	0	0	0	0
SHF	7	0	0	0	0	7
PGH	0	0	0	0	0	0
RAM	0	0	0	0	0	0
RBR	0	0	0	0	0	0
<b>Sub-Total</b>	<b>7</b>	<b>0</b>	<b>0</b>	<b>0</b>	<b>0</b>	<b>7</b>

PALM BEACH COUNTY - 12099

	7	11	12	13	304	TOTAL
AJC	0	0	0	0	0	0
SHF	254	0	0	36	0	290
PGH	142	0	0	0	0	142
RAM	0	0	0	0	0	0
RBR	0	0	0	0	0	0
<b>Sub-Total</b>	<b>396</b>	<b>0</b>	<b>0</b>	<b>36</b>	<b>0</b>	<b>432</b>

ST. LUCIE - 12111

	7	11	12	13	304	TOTAL
AJC	0	0	0	0	0	0
SHF	65	0	0	16	0	81
PGH	1	0	0	0	0	1
RAM	0	0	0	0	0	0
RBR	0	0	0	0	0	0
<b>Sub-Total</b>	<b>66</b>	<b>0</b>	<b>0</b>	<b>16</b>	<b>0</b>	<b>82</b>

0 Division  
Total 627

<b>GRAND TOTAL</b>	<b>2623</b>	<b>1</b>	<b>0</b>	<b>409</b>	<b>1</b>	<b>3034</b>
--------------------	-------------	----------	----------	------------	----------	-------------

**CASE FILING SUMMARY BY COUNTY / CONSUMER - BUSINESS**  
**BUSINESS**

**DADE COUNTY - 12025**

	7	11	12	13	304	TOTAL
AJC	5	4	0	0	0	9
SHF	0	0	0	0	0	0
PGH	0	0	0	0	0	0
RAM	11	2	0	0	0	13
RBR	0	0	0	0	0	0
<b>Sub-Total</b>	<b>16</b>	<b>6</b>	<b>0</b>	<b>0</b>	<b>0</b>	<b>22</b>

**MONROE COUNTY - 12087**

	7	11	12	13	304	TOTAL
AJC	1	0	0	0	0	1
SHF	0	0	0	0	0	0
PGH	0	0	0	0	0	0
RAM	0	0	0	0	0	0
RBR	0	0	0	0	0	0
<b>Sub-Total</b>	<b>1</b>	<b>0</b>	<b>0</b>	<b>0</b>	<b>0</b>	<b>1</b>

0 Division  
**1 Total 23**

**BROWARD COUNTY - 12011**

	7	11	12	13	304	TOTAL
AJC	0	0	0	0	0	0
SHF	0	0	0	0	0	0
PGH	4	0	0	0	0	4
RAM	0	0	0	0	0	0
RBR	7	0	0	0	0	7
<b>Sub-Total</b>	<b>11</b>	<b>0</b>	<b>0</b>	<b>0</b>	<b>0</b>	<b>11</b>

7 Division  
**11 Total 11**

**HIGHLANDS COUNTY - 12055**

	7	11	12	13	304	TOTAL
AJC	0	0	0	0	0	0
SHF	0	0	0	0	0	0
PGH	0	0	0	0	0	0
RAM	0	0	0	0	0	0
RBR	0	0	0	0	0	0
<b>Sub-Total</b>	<b>0</b>	<b>0</b>	<b>0</b>	<b>0</b>	<b>0</b>	<b>0</b>

**INDIAN RIVER COUNTY - 12061**

	7	11	12	13	304	TOTAL
AJC	0	0	0	0	0	0
SHF	0	0	0	0	0	0
PGH	0	0	0	0	0	0
RAM	0	0	0	0	0	0
RBR	0	0	0	0	0	0
<b>Sub-Total</b>	<b>0</b>	<b>0</b>	<b>0</b>	<b>0</b>	<b>0</b>	<b>0</b>

**MARTIN COUNTY - 12085**

	7	11	12	13	304	TOTAL
AJC	0	0	0	0	0	0
SHF	0	0	0	0	0	0
PGH	0	0	0	0	0	0
RAM	0	0	0	0	0	0
RBR	0	0	0	0	0	0
<b>Sub-Total</b>	<b>0</b>	<b>0</b>	<b>0</b>	<b>0</b>	<b>0</b>	<b>0</b>

**OKEECHOBEE COUNTY - 12093**

	7	11	12	13	304	TOTAL
AJC	0	0	0	0	0	0
SHF	0	0	0	0	0	0
PGH	0	0	0	0	0	0
RAM	0	0	0	0	0	0
RBR	0	0	0	0	0	0
<b>Sub-Total</b>	<b>0</b>	<b>0</b>	<b>0</b>	<b>0</b>	<b>0</b>	<b>0</b>

**PALM BEACH COUNTY - 12099**

	7	11	12	13	304	TOTAL
AJC	0	0	0	0	0	0
SHF	1	0	0	0	0	1
PGH	3	2	0	0	0	5
RAM	0	0	0	0	0	0
RBR	0	0	0	0	0	0
<b>Sub-Total</b>	<b>4</b>	<b>2</b>	<b>0</b>	<b>0</b>	<b>0</b>	<b>6</b>

**ST. LUCIE - 12111**

	7	11	12	13	304	TOTAL
AJC	0	0	0	0	0	0
SHF	0	0	0	0	0	0
PGH	0	0	0	0	0	0
RAM	0	0	0	0	0	0
RBR	0	0	0	0	0	0
<b>Sub-Total</b>	<b>0</b>	<b>0</b>	<b>0</b>	<b>0</b>	<b>0</b>	<b>0</b>

0 Division  
**0 Total 6**

<b>GRAND TOTAL</b>	<b>32</b>	<b>8</b>	<b>0</b>	<b>0</b>	<b>0</b>	<b>40</b>
--------------------	-----------	----------	----------	----------	----------	-----------

AJC	CH 7	CH 11	CH 12	CH 13	SEC 304	TOTAL
JAN	281	2	0	71	0	354
FEB	250	3	0	73	0	326
MAR	434	1	0	78	0	513
APR	619	4	0	98	0	721
MAY	615	3	0	69	1	688
JUN	624	2	0	87	0	713
JUL	567	1	0	75	1	644
AUG	698	4	0	96	0	798
SEP	0	0	0	0	0	0
OCT	0	0	0	0	0	0
NOV	0	0	0	0	0	0
DEC	0	0	0	0	0	0
<b>TOTALS</b>	<b>4088</b>	<b>20</b>	<b>0</b>	<b>647</b>	<b>2</b>	<b>4757</b>

SHF	CH 7	CH 11	CH 12	CH 13	SEC 304	TOTAL
JAN	227	4	0	86	0	317
FEB	235	1	0	77	0	313
MAR	351	2	0	90	0	443
APR	438	2	0	84	0	524
MAY	438	3	0	76	0	517
JUN	376	1	0	62	0	439
JUL	339	2	0	67	0	408
AUG	417	0	0	61	0	478
SEP	0	0	0	0	0	0
OCT	0	0	0	0	0	0
NOV	0	0	0	0	0	0
DEC	0	0	0	0	0	0
<b>TOTALS</b>	<b>2821</b>	<b>15</b>	<b>0</b>	<b>603</b>	<b>0</b>	<b>3439</b>

PGH	CH 7	CH 11	CH 12	CH 13	SEC 304	TOTAL
JAN	222	1	0	60	0	283
FEB	239	4	0	57	0	300
MAR	362	2	0	64	0	428
APR	509	4	0	64	0	577
MAY	361	5	0	53	0	419
JUN	377	1	0	47	0	425
JUL	344	2	0	47	0	393
AUG	427	2	0	63	0	492
SEP	0	0	0	0	0	0
OCT	0	0	0	0	0	0
NOV	0	0	0	0	0	0
DEC	0	0	0	0	0	0
<b>TOTALS</b>	<b>2841</b>	<b>21</b>	<b>0</b>	<b>455</b>	<b>0</b>	<b>3317</b>

RAM	CH 7	CH 11	CH 12	CH 13	SEC 304	TOTAL
JAN	274	1	0	72	0	347
FEB	255	2	0	72	0	329
MAR	429	0	0	76	0	505
APR	614	3	0	102	0	719
MAY	618	3	0	65	1	687
JUN	621	1	0	90	0	712
JUL	564	2	0	76	0	642
AUG	697	3	0	96	0	796
SEP	0	0	0	0	0	0
OCT	0	0	0	0	0	0
NOV	0	0	0	0	0	0
DEC	0	0	0	0	0	0
<b>TOTALS</b>	<b>4072</b>	<b>15</b>	<b>0</b>	<b>649</b>	<b>1</b>	<b>4737</b>

RBR	CH 7	CH 11	CH 12	CH 13	SEC 304	TOTAL
JAN	226	1	0	104	0	331
FEB	247	2	0	101	0	350
MAR	361	1	0	103	0	465
APR	459	0	0	123	0	582
MAY	402	3	0	88	0	493
JUN	369	0	0	81	0	450
JUL	348	1	0	73	0	422
AUG	417	0	0	92	1	510
SEP	0	0	0	0	0	0
OCT	0	0	0	0	0	0
NOV	0	0	0	0	0	0
DEC	0	0	0	0	0	0
<b>TOTALS</b>	<b>2829</b>	<b>8</b>	<b>0</b>	<b>765</b>	<b>1</b>	<b>3603</b>

**2005 YEAR-TO-DATE COMPARISON OF BANKRUPTCY CASE FILINGS  
BY JUDGE**

	AJC	SHF	PGH	RAM	RBR	TOTAL
JAN	354	317	283	347	331	1632
FEB	326	313	300	329	350	1618
MAR	513	443	428	505	465	2354
APR	721	524	577	719	582	3123
MAY	688	517	419	687	493	2804
JUN	713	439	425	712	450	2739
JUL	644	408	393	642	422	2509
AUG	798	478	492	796	510	3074
SEP	0	0	0	0	0	0
OCT	0	0	0	0	0	0
NOV	0	0	0	0	0	0
DEC	0	0	0	0	0	0
<b>TOTALS</b>	<b>4757</b>	<b>3439</b>	<b>3317</b>	<b>4737</b>	<b>3603</b>	<b>19853</b>
<b>% of Total</b>	<b>23.96</b>	<b>17.32</b>	<b>16.71</b>	<b>23.86</b>	<b>18.15</b>	

**2005 YEAR-TO-DATE COMPARISON OF BANKRUPTCY CASE FILINGS  
BY JUDGE/CHAPTER**

	CH 7	CH 11	CH 12	CH 13	SEC 304	TOTAL
AJC	4088	20	0	647	2	4757
SHF	2821	15	0	603	0	3439
PGH	2841	21	0	455	0	3317
RAM	4072	15	0	649	1	4737
RBR	2829	8	0	765	1	3603
<b>TOTALS</b>	<b>16651</b>	<b>79</b>	<b>0</b>	<b>3119</b>	<b>4</b>	<b>19853</b>



### CALENDAR YEAR-TO-DATE COMPARISON

	ENDING AUG 05	ENDING AUG 04	PERCENT CHANGE
Bankruptcy Case Filings	19853	18568	6.92
Bankruptcy Case Closings	19543	19934	-1.96
Adversary Filings	799	925	-13.62
Adversary Closings	933	1401	-33.40

### 12-MONTH/THREE YEAR COMPARISON

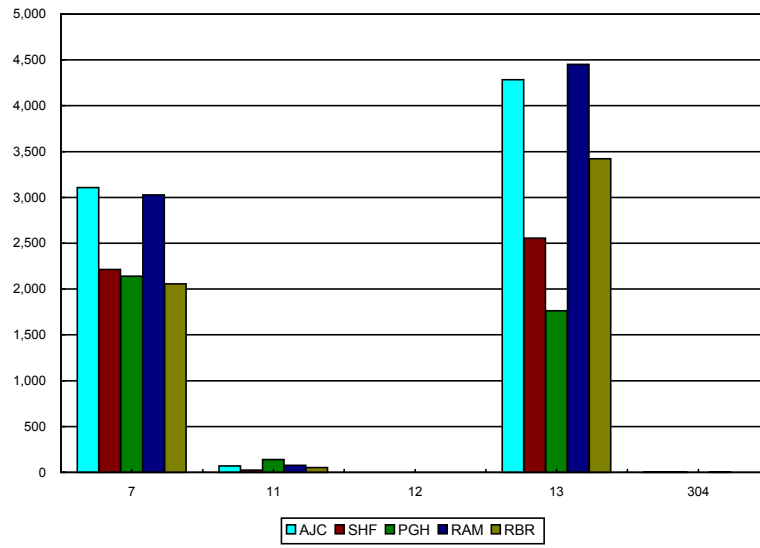
	ENDING AUG 05	ENDING AUG 04	ENDING AUG 03	% CHANGE 2005 / 2004	% CHANGE 2005 / 2003
Bankruptcy Case Filings	27765	28303	32244	-1.90	-13.89
Bankruptcy Case Closings	29571	30640	30975	-3.49	-4.53
Adversary Filings	1230	1497	2810	-17.84	-56.23
Adversary Closings	1405	2278	1914	-38.32	-26.59

### MONTHLY COMPARISON

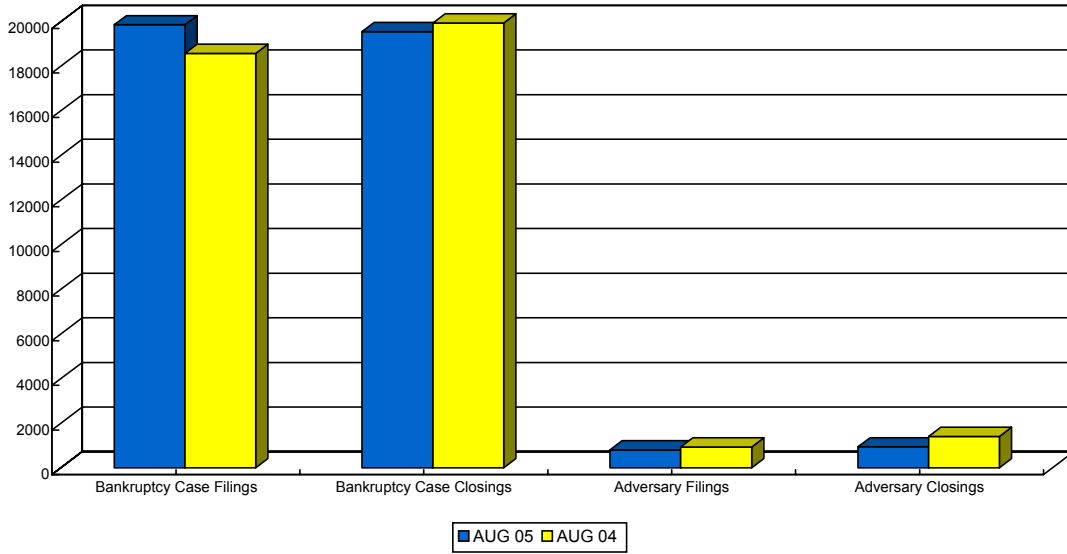
	AUG 05	AUG 04	PERCENT CHANGE
Bankruptcy Case Filings	3074	2238	37.35
Bankruptcy Case Closings	3410	2515	35.59
Adversary Filings	70	104	-32.69
Adversary Closings	175	100	75.00

*Filings and Closings for Dade Division includes Monroe County  
 Filings and Closings for Palm Beach Division includes Indian River, Highlands, Martin,  
 St. Lucie & Okeechobee Counties*

TOTAL PENDING CASELOAD BY JUDGE/CHAPTER



CALENDAR YEAR-TO-DATE COMPARISON



12-MONTH/THREE YEAR COMPARISON

