

UNITED STATES BANKRUPTCY COURT

SOUTHERN DISTRICT OF FLORIDA

*51 S.W. 1st Avenue
Room 1401
Miami, FL 33130*

*Karen Eddy
Clerk of Court*



MONTHLY STATISTICAL REPORT
AUGUST 2004

MONTHLY STATISTICAL REPORT

TABLE OF CONTENTS

	<i>page</i>
<i>I. MONTHLY SARD SUMMARY REPORT</i>	<i>2</i>
<i>II. BK CASE FILINGS SUMMARY REPORT</i>	<i>3</i>
<i>III. BK CASE CLOSINGS SUMMARY REPORT</i>	<i>4</i>
<i>IV. AP CASE FILINGS SUMMARY REPORT</i>	<i>5</i>
<i>V. AP CASE CLOSINGS SUMMARY REPORT</i>	<i>6</i>
<i>VI. BK PRO SE CASES FILING SUMMARY REPORT</i>	<i>7</i>
<i>VII. PENDING CASELOAD REPORT BY JUDGE/CHAPTER</i>	<i>8</i>
<i>VIII. DIVISIONAL CASELOAD REPORT</i>	<i>9</i>
<i>IX. CASE FILING BREAKDOWN BY COUNTY</i>	<i>10</i>
<i>X. BREAKDOWN BY NATURE OF DEBTOR</i>	<i>11</i>
<i>XI. BREAKDOWN BY COUNTY / NATURE - CONSUMER</i>	<i>12</i>
<i>XII. BREAKDOWN BY COUNTY / NATURE - BUSINESS</i>	<i>13</i>
<i>XIII. SUMMARIES AND GRAPHS</i>	<i>14 - 18</i>

AUGUST 2004
MONTHLY SARD REPORT SUMMARY

I. BC101 REPORT OF BANKRUPTCY CASES

	AJC	SHF	PGH	RAM	RBR	TOTAL
Pending Prior Month	7,844	4,778	5,296	7,823	5,100	30,841
Cases Filed	552	367	381	549	389	2,238
Reopened	12	5	9	5	10	41
Split Cases	0	0	0	0	0	0
Trans. In	0	0	0	0	0	0
Reassigned To	3	3	1	4	0	11
Trans. Out	0	0	0	0	0	0
Reassigned From	4	0	4	3	0	11
Cases Closed	620	347	490	611	447	2,515
Cases Pending	7,787	4,806	5,193	7,767	5,052	30,605

II. BC109 REPORT OF ADVERSARY CASES

	AJC	SHF	PGH	RAM	RBR	TOTAL
Pending Prior Month	114	148	201	215	190	868
Cases Filed	28	23	20	22	11	104
Reassigned To	0	0	0	0	0	0
Cases Reopened	0	2	0	0	0	2
Cases Closed	24	21	8	9	38	100
Reassigned From	0	0	0	0	0	0
Cases Pending	118	152	213	228	163	874

IV. MONTHLY REPORT OF TRIALS AND OTHER ACTIVITY

	Contested Proceedings	Miscellaneous Proceedings	Total Hours in Court
AJC	2	29	31
SHF	5	43	48
PGH	5	28	33
RAM	2	28	30
RBR	0	22	22
Total	14	150	164

UNITED STATES BANKRUPTCY COURT
Southern District of Florida

CASE FILINGS SUMMARY REPORT
For Cases Filed from 08/01/2004 to 08/31/2004
Run Date: 09/07/04

Run Time 15:57

Divisional Breakdown

Ch	Dade					Broward					Palm Beach					
	7	11	12	13	304	7	11	12	13	304	7	11	12	13	304	
AJC	452	1	0	99	0	0	0	0	0	0	0	0	0	0	0	
SHF	0	0	0	0	0	0	0	0	0	0	296	0	0	71	0	
PGH	0	0	0	20	0	178	1	0	68	0	113	1	0	0	0	
RAM	451	1	0	96	1	0	0	0	0	0	0	0	0	0	0	
RBR	0	0	0	23	0	297	1	0	68	0	0	0	0	0	0	

Tot	903	2	0	238	1	475	2	0	136	0	409	1	0	71	0	
Divisional Totals				1144					613					481		

Totals By Judge

	Chapter 7	Section 304	Chapter 11	Chapter 12	Chapter 13	Totals
AJC	452	0	1	0	99	552
SHF	296	0	0	0	71	367
PGH	291	0	2	0	88	381
RAM	451	1	1	0	96	549
RBR	297	0	1	0	91	389

Totals	1787	1	5	0	445	

Grand Total: 2238

"TOTAL DOES NOT INCLUDE SPLIT, TRANSFERRED IN CASES AND INTRA-DISTRICT CASES FILED PRIOR TO THIS MONTH"

UNITED STATES BANKRUPTCY COURT
Southern District of Florida

CASE CLOSING SUMMARY REPORT
For Cases Closed from 08/01/2004 to 08/31/2004
Run Date: 09/08/04

Run Time 11:17

Divisional Breakdown

Ch	Dade					Broward					Palm Beach					
	7	11	12	13	304	7	11	12	13	304	7	11	12	13	304	
AJC	464	2	0	154	0	0	0	0	0	0	0	0	0	0	0	
SHF	0	0	0	0	0	0	0	0	0	0	287	3	0	57	0	
PGH	3	0	0	48	0	249	0	0	112	0	77	1	0	0	0	
RAM	464	3	0	143	1	0	0	0	0	0	0	0	0	0	0	
RBR	3	0	0	43	0	350	1	0	50	0	0	0	0	0	0	

Tot	934	5	0	388	1	599	1	0	162	0	364	4	0	57	0	
Divisional Totals	1328				762					425						

Totals By Judge

	Chapter 7	Section 304	Chapter 11	Chapter 12	Chapter 13	Totals
AJC	464	0	2	0	154	620
SHF	287	0	3	0	57	347
PGH	329	0	1	0	160	490
RAM	464	1	3	0	143	611
RBR	353	0	1	0	93	447

Totals	1897	1	10	0	607	
Grand Total:	2515					

UNITED STATES BANKRUPTCY COURT
Southern District of FloridaAdversary Proceedings Case Filing Report
For Cases Filed from 08/01/2004 to 08/31/2004
Run Time 14:56

Run Date: 09/07/04

Divisional Breakdown

	Dade	Broward	Palm Beach	Totals
AJC	28	0	0	28
SHF	0	0	23	23
PGH	1	6	13	20
RAM	22	0	0	22
RBR	0	11	0	11

Totals	51	17	36	104

UNITED STATES BANKRUPTCY COURT
Southern District of FloridaAdversary Proceedings Case Closing Report
For Cases Closed from 08/01/2004 to 08/31/2004
Run Time 14:56

Run Date: 09/07/04

Divisional Breakdown

	Dade	Broward	Palm Beach	Totals
AJC	24	0	0	24
SHF	0	0	21	21
PGH	0	7	1	8
RAM	9	0	0	9
RBR	0	38	0	38

Totals	33	45	22	100

UNITED STATES BANKRUPTCY COURT
SOUTHERN DISTRICT OF FLORIDA

BANKRUPTCY PRO SE CASES FILING SUMMARY REPORT
For Cases Filed from 08/01/2004 to 08/31/2004

Run Time 08:13

Run Date: 09/08/04

Ch	Dade					Broward					Palm Beach				
	7	11	12	13	304	7	11	12	13	304	7	11	12	13	304
AJC	20	0	0	13	0	0	0	0	0	0	0	0	0	0	0
SHF	0	0	0	0	0	0	0	0	0	0	69	0	0	11	0
PGH	0	0	0	5	0	35	0	0	13	0	15	0	0	0	0
RAM	18	0	0	12	0	0	0	0	0	0	0	0	0	0	0
RBR	0	0	0	8	0	65	0	0	12	0	0	0	0	0	0
Tot	38	0	0	38	0	100	0	0	25	0	84	0	0	11	0
Divisional Totals					76					125					95

	Totals By Judge					Totals
	Chapter 7	Section 304	Chapter 11	Chapter 12	Chapter 13	
AJC	20	0	0	0	13	33
SHF	69	0	0	0	11	80
PGH	50	0	0	0	18	68
RAM	18	0	0	0	12	30
RBR	65	0	0	0	20	85
Totals	222	0	0	0	74	296
Grand Total:	296					

PENDING CASELOAD REPORTS BY JUDGE/CHAPTER
AUGUST 2004

AJC	7	11	12	13	304	ACT	TOTALS
Pending Prior Month	2,504	102	1	5,235	2	0	7,844
Cases Filed	452	1	0	99	0	0	552
Reopened	9	0	0	3	0	0	12
Split Cases	0	0	0	0	0	0	0
Transferred In	0	0	0	0	0	0	0
Reassigned To	1	0	0	2	0	0	3
Converted To	9	2	0	3	0	0	14
Transferred Out	0	0	0	0	0	0	0
Reassigned From	4	0	0	0	0	0	4
Converted From	5	0	0	9	0	0	14
Cases Closed	464	2	0	154	0	0	620
Total Pending	2,502	103	1	5,179	2	0	7,787

SHF	7	11	12	13	304	ACT	TOTALS
Pending Prior Month	1,849	26	0	2,897	6	0	4,778
Cases Filed	296	0	0	71	0	0	367
Reopened	4	0	0	1	0	0	5
Split Cases	0	0	0	0	0	0	0
Transferred In	0	0	0	0	0	0	0
Reassigned To	1	0	0	2	0	0	3
Converted To	11	0	0	3	0	0	14
Transferred Out	0	0	0	0	0	0	0
Reassigned From	0	0	0	0	0	0	0
Converted From	3	0	0	11	0	0	14
Cases Closed	287	3	0	57	0	0	347
Total Pending	1,871	23	0	2,906	6	0	4,806

PGH	7	11	12	13	304	ACT	TOTALS
Pending Prior Month	1,917	155	0	3,223	1	0	5,296
Cases Filed	291	2	0	88	0	0	381
Reopened	6	1	0	2	0	0	9
Split Cases	0	0	0	0	0	0	0
Transferred In	0	0	0	0	0	0	0
Reassigned To	1	0	0	0	0	0	1
Converted To	13	0	0	3	0	0	16
Transferred Out	0	0	0	0	0	0	0
Reassigned From	1	0	0	3	0	0	4
Converted From	3	2	0	11	0	0	16
Cases Closed	329	1	0	160	0	0	490
Total Pending	1,895	155	0	3,142	1	0	5,193

RAM	7	11	12	13	304	ACT	TOTALS
Pending Prior Month	2,395	146	0	5,280	2	0	7,823
Cases Filed	451	1	0	96	1	0	549
Reopened	4	0	0	1	0	0	5
Split Cases	0	0	0	0	0	0	0
Transferred In	0	0	0	0	0	0	0
Reassigned To	4	0	0	0	0	0	4
Converted To	7	0	0	3	0	0	10
Transferred Out	0	0	0	0	0	0	0
Reassigned From	2	0	0	1	0	0	3
Converted From	3	0	0	7	0	0	10
Cases Closed	464	3	0	143	1	0	611
Total Pending	2,392	144	0	5,229	2	0	7,767

RBR	7	11	12	13	304	ACT	TOTALS
Pending Prior Month	1,817	73	0	3,210	0	0	5,100
Cases Filed	297	1	0	91	0	0	389
Reopened	8	0	0	2	0	0	10
Split Cases	0	0	0	0	0	0	0
Transferred In	0	0	0	0	0	0	0
Reassigned To	0	0	0	0	0	0	0
Converted To	10	0	0	4	0	0	14
Transferred Out	0	0	0	0	0	0	0
Reassigned From	0	0	0	0	0	0	0
Converted From	4	2	0	8	0	0	14
Cases Closed	353	1	0	93	0	0	447
Total Pending	1,775	71	0	3,206	0	0	5,052

GRAND TOTAL:	10,435	496	1	19,662	11	0	30,605
---------------------	---------------	------------	----------	---------------	-----------	----------	---------------

AJC PENDING CASE SUMMARY

CHAPTER	DADE DIVISION	BROWARD DIVISION	PALM BEACH DIVISION	TOTAL
7	2,499	1	2	2,502
11	100	3	0	103
12	1	0	0	1
13	5,179	0	0	5,179
304	2	0	0	2
Sub-Total	7,781	4	2	7,787
Act Cases	0	0	0	0
GRAND TOTALS	7,781	4	2	7,787

SHF PENDING CASE SUMMARY

CHAPTER	DADE DIVISION	BROWARD DIVISION	PALM BEACH DIVISION	TOTAL
7	2	2	1,867	1,871
11	0	0	23	23
12	0	0	0	0
13	0	0	2,906	2,906
304	0	0	6	6
Sub-Total	2	2	4,802	4,806
Act Cases	0	0	0	0
GRAND TOTALS	2	2	4,802	4,806

PGH PENDING CASE SUMMARY

CHAPTER	DADE DIVISION	BROWARD DIVISION	PALM BEACH DIVISION	TOTAL
7	29	1,129	737	1,895
11	1	105	49	155
12	0	0	0	0
13	937	2,205	0	3,142
304	0	1	0	1
Sub-Total	967	3,440	786	5,193
Act Cases	0	0	0	0
GRAND TOTALS	967	3,440	786	5,193

RAM PENDING CASE SUMMARY

CHAPTER	DADE DIVISION	BROWARD DIVISION	PALM BEACH DIVISION	TOTAL
7	2,378	0	14	2,392
11	143	0	1	144
12	0	0	0	0
13	5,229	0	0	5,229
304	2	0	0	2
Sub-Total	7,752	0	15	7,767
Act Cases	0	0	0	0
GRAND TOTALS	7,752	0	15	7,767

RBR PENDING CASE SUMMARY

CHAPTER	DADE DIVISION	BROWARD DIVISION	PALM BEACH DIVISION	TOTAL
7	21	1,754	0	1,775
11	0	71	0	71
12	0	0	0	0
13	943	2,262	1	3,206
304	0	0	0	0
Sub-Total	964	4,087	1	5,052
Act Cases	0	0	0	0
GRAND TOTALS	964	4,087	1	5,052

DISTRICT TOTALS	17,466	7,533	5,606	30,605
------------------------	---------------	--------------	--------------	---------------

CASE FILING SUMMARY BY COUNTY

DADE COUNTY - 12025

	7	11	12	13	304	TOTAL
AJC	448	1	0	97	0	546
SHF	0	0	0	0	0	0
PGH	0	0	0	20	0	20
RAM	444	1	0	96	1	542
RBR	0	0	0	23	0	23
Sub-Total	892	2	0	236	1	1131

MONROE COUNTY - 12087

	7	11	12	13	304	TOTAL
AJC	4	0	0	2	0	6
SHF	0	0	0	0	0	0
PGH	0	0	0	0	0	0
RAM	7	0	0	0	0	7
RBR	0	0	0	0	0	0
Sub-Total	11	0	0	2	0	13

Division Total 1144

BROWARD COUNTY - 12011

	7	11	12	13	304	TOTAL
AJC	0	0	0	0	0	0
SHF	0	0	0	0	0	0
PGH	178	1	0	68	0	247
RAM	0	0	0	0	0	0
RBR	297	1	0	68	0	366
Sub-Total	475	2	0	136	0	613

Division Total 613

HIGHLANDS COUNTY - 12055

	7	11	12	13	304	TOTAL
AJC	0	0	0	0	0	0
SHF	12	0	0	5	0	17
PGH	2	0	0	0	0	2
RAM	0	0	0	0	0	0
RBR	0	0	0	0	0	0
Sub-Total	14	0	0	5	0	19

INDIAN RIVER COUNTY - 12061

	7	11	12	13	304	TOTAL
AJC	0	0	0	0	0	0
SHF	23	0	0	4	0	27
PGH	0	0	0	0	0	0
RAM	0	0	0	0	0	0
RBR	0	0	0	0	0	0
Sub-Total	23	0	0	4	0	27

MARTIN COUNTY - 12085

	7	11	12	13	304	TOTAL
AJC	0	0	0	0	0	0
SHF	18	0	0	3	0	21
PGH	12	0	0	0	0	12
RAM	0	0	0	0	0	0
RBR	0	0	0	0	0	0
Sub-Total	30	0	0	3	0	33

OKEECHOBEE COUNTY - 12093

	7	11	12	13	304	TOTAL
AJC	0	0	0	0	0	0
SHF	15	0	0	4	0	19
PGH	0	0	0	0	0	0
RAM	0	0	0	0	0	0
RBR	0	0	0	0	0	0
Sub-Total	15	0	0	4	0	19

PALM BEACH COUNTY - 12099

	7	11	12	13	304	TOTAL
AJC	0	0	0	0	0	0
SHF	168	0	0	43	0	211
PGH	98	1	0	0	0	99
RAM	0	0	0	0	0	0
RBR	0	0	0	0	0	0
Sub-Total	266	1	0	43	0	310

ST. LUCIE - 12111

	7	11	12	13	304	TOTAL
AJC	0	0	0	0	0	0
SHF	60	0	0	12	0	72
PGH	1	0	0	0	0	1
RAM	0	0	0	0	0	0
RBR	0	0	0	0	0	0
Sub-Total	61	0	0	12	0	73

Division Total 481

GRAND TOTAL	1787	5	0	445	1	2238
--------------------	-------------	----------	----------	------------	----------	-------------

AUGUST 2004

CASE FILING SUMMARY BY NATURE OF DEBTOR/DIVISION

CHAPTER	BUSINESS				CONSUMER				TOTAL
	DADE	BROWARD	PALM BCH	DIV. TOTAL	DADE	BROWARD	PALM BCH	DIV. TOTAL	
7	13	6	9	28	890	469	400	1759	1787
11	2	2	1	5	0	0	0	0	5
12	0	0	0	0	0	0	0	0	0
13	0	0	0	0	238	136	71	445	445
304	1	0	0	1	0	0	0	0	1
TOTAL	16	8	10	34	1128	605	471	2204	2238

DIVISIONAL BUSINESS CASE FILING SUMMARY

DADE DIVISION

CHAPTER	AJC	SHF	PGH	RAM	RBR	TOTAL
7	6	0	0	7	0	13
11	1	0	0	1	0	2
12	0	0	0	0	0	0
13	0	0	0	0	0	0
304	0	0	0	1	0	1
Sub-Total	7	0	0	9	0	16

BROWARD DIVISION

CHAPTER	AJC	SHF	PGH	RAM	RBR	TOTAL
7	0	0	3	0	3	6
11	0	0	1	0	1	2
12	0	0	0	0	0	0
13	0	0	0	0	0	0
304	0	0	0	0	0	0
Sub-Total	0	0	4	0	4	8

PALM BEACH DIVISION

CHAPTER	AJC	SHF	PGH	RAM	RBR	TOTAL
7	0	5	4	0	0	9
11	0	0	1	0	0	1
12	0	0	0	0	0	0
13	0	0	0	0	0	0
304	0	0	0	0	0	0
Sub-Total	0	5	5	0	0	10
GRAND TOTAL	7	5	9	9	4	34

DIVISIONAL CONSUMER CASE FILING SUMMARY

DADE DIVISION

CHAPTER	AJC	SHF	PGH	RAM	RBR	TOTAL
7	446	0	0	444	0	890
11	0	0	0	0	0	0
12	0	0	0	0	0	0
13	99	0	20	96	23	238
304	0	0	0	0	0	0
Sub-Total	545	0	20	540	23	1128

BROWARD DIVISION

CHAPTER	AJC	SHF	PGH	RAM	RBR	TOTAL
7	0	0	175	0	294	469
11	0	0	0	0	0	0
12	0	0	0	0	0	0
13	0	0	68	0	68	136
304	0	0	0	0	0	0
Sub-Total	0	0	243	0	362	605

PALM BEACH DIVISION

CHAPTER	AJC	SHF	PGH	RAM	RBR	TOTAL
7	0	291	109	0	0	400
11	0	0	0	0	0	0
12	0	0	0	0	0	0
13	0	71	0	0	0	71
304	0	0	0	0	0	0
Sub-Total	0	362	109	0	0	471
GRAND TOTAL	545	362	372	540	385	2204

CASE FILING SUMMARY BY COUNTY / CONSUMER - BUSINESS

CONSUMERS

DADE COUNTY - 12025

	7	11	12	13	304	TOTAL
AJC	442	0	0	97	0	539
SHF	0	0	0	0	0	0
PGH	0	0	0	20	0	20
RAM	437	0	0	96	0	533
RBR	0	0	0	23	0	23
Sub-Total	879	0	0	236	0	1115

MONROE COUNTY - 12087

	7	11	12	13	304	TOTAL
AJC	4	0	0	2	0	6
SHF	0	0	0	0	0	0
PGH	0	0	0	0	0	0
RAM	7	0	0	0	0	7
RBR	0	0	0	0	0	0
Sub-Total	11	0	0	2	0	13

0 Division
1128 Total

BROWARD COUNTY - 12011

	7	11	12	13	304	TOTAL
AJC	0	0	0	0	0	0
SHF	0	0	0	0	0	0
PGH	175	0	0	68	0	243
RAM	0	0	0	0	0	0
RBR	294	0	0	68	0	362
Sub-Total	469	0	0	136	0	605

0 Division
605 Total

HIGHLANDS COUNTY - 12055

	7	11	12	13	304	TOTAL
AJC	0	0	0	0	0	0
SHF	12	0	0	5	0	17
PGH	2	0	0	0	0	2
RAM	0	0	0	0	0	0
RBR	0	0	0	0	0	0
Sub-Total	14	0	0	5	0	19

INDIAN RIVER COUNTY - 12061

	7	11	12	13	304	TOTAL
AJC	0	0	0	0	0	0
SHF	22	0	0	4	0	26
PGH	0	0	0	0	0	0
RAM	0	0	0	0	0	0
RBR	0	0	0	0	0	0
Sub-Total	22	0	0	4	0	26

MARTIN COUNTY - 12085

	7	11	12	13	304	TOTAL
AJC	0	0	0	0	0	0
SHF	18	0	0	3	0	21
PGH	12	0	0	0	0	12
RAM	0	0	0	0	0	0
RBR	0	0	0	0	0	0
Sub-Total	30	0	0	3	0	33

OKEECHOBEE COUNTY - 12093

	7	11	12	13	304	TOTAL
AJC	0	0	0	0	0	0
SHF	15	0	0	4	0	19
PGH	0	0	0	0	0	0
RAM	0	0	0	0	0	0
RBR	0	0	0	0	0	0
Sub-Total	15	0	0	4	0	19

PALM BEACH COUNTY - 12099

	7	11	12	13	304	TOTAL
AJC	0	0	0	0	0	0
SHF	164	0	0	43	0	207
PGH	94	0	0	0	0	94
RAM	0	0	0	0	0	0
RBR	0	0	0	0	0	0
Sub-Total	258	0	0	43	0	301

ST. LUCIE - 12111

	7	11	12	13	304	TOTAL
AJC	0	0	0	0	0	0
SHF	60	0	0	12	0	72
PGH	1	0	0	0	0	1
RAM	0	0	0	0	0	0
RBR	0	0	0	0	0	0
Sub-Total	61	0	0	12	0	73

0 Division
471 Total

GRAND TOTAL	1759	0	0	445	0	2204
--------------------	-------------	----------	----------	------------	----------	-------------

CASE FILING SUMMARY BY COUNTY / CONSUMER - BUSINESS
BUSINESS

DADE COUNTY - 12025

	7	11	12	13	304	TOTAL
AJC	6	1	0	0	0	7
SHF	0	0	0	0	0	0
PGH	0	0	0	0	0	0
RAM	7	1	0	0	1	9
RBR	0	0	0	0	0	0
Sub-Total	13	2	0	0	1	16

MONROE COUNTY - 12087

	7	11	12	13	304	TOTAL
AJC	0	0	0	0	0	0
SHF	0	0	0	0	0	0
PGH	0	0	0	0	0	0
RAM	0	0	0	0	0	0
RBR	0	0	0	0	0	0
Sub-Total	0	0	0	0	0	0

0 Division
0 Total 16

BROWARD COUNTY - 12011

	7	11	12	13	304	TOTAL
AJC	0	0	0	0	0	0
SHF	0	0	0	0	0	0
PGH	3	1	0	0	0	4
RAM	0	0	0	0	0	0
RBR	3	1	0	0	0	4
Sub-Total	6	2	0	0	0	8

4 Division
8 Total 8

HIGHLANDS COUNTY - 12055

	7	11	12	13	304	TOTAL
AJC	0	0	0	0	0	0
SHF	0	0	0	0	0	0
PGH	0	0	0	0	0	0
RAM	0	0	0	0	0	0
RBR	0	0	0	0	0	0
Sub-Total	0	0	0	0	0	0

INDIAN RIVER COUNTY - 12061

	7	11	12	13	304	TOTAL
AJC	0	0	0	0	0	0
SHF	1	0	0	0	0	1
PGH	0	0	0	0	0	0
RAM	0	0	0	0	0	0
RBR	0	0	0	0	0	0
Sub-Total	1	0	0	0	0	1

MARTIN COUNTY - 12085

	7	11	12	13	304	TOTAL
AJC	0	0	0	0	0	0
SHF	0	0	0	0	0	0
PGH	0	0	0	0	0	0
RAM	0	0	0	0	0	0
RBR	0	0	0	0	0	0
Sub-Total	0	0	0	0	0	0

OKEECHOBEE COUNTY - 12093

	7	11	12	13	304	TOTAL
AJC	0	0	0	0	0	0
SHF	0	0	0	0	0	0
PGH	0	0	0	0	0	0
RAM	0	0	0	0	0	0
RBR	0	0	0	0	0	0
Sub-Total	0	0	0	0	0	0

PALM BEACH COUNTY - 12099

	7	11	12	13	304	TOTAL
AJC	0	0	0	0	0	0
SHF	4	0	0	0	0	4
PGH	4	1	0	0	0	5
RAM	0	0	0	0	0	0
RBR	0	0	0	0	0	0
Sub-Total	8	1	0	0	0	9

ST. LUCIE - 12111

	7	11	12	13	304	TOTAL
AJC	0	0	0	0	0	0
SHF	0	0	0	0	0	0
PGH	0	0	0	0	0	0
RAM	0	0	0	0	0	0
RBR	0	0	0	0	0	0
Sub-Total	0	0	0	0	0	0

0 Division
0 Total 10

GRAND TOTAL	28	5	0	0	1	34
--------------------	-----------	----------	----------	----------	----------	-----------

AJC	CH 7	CH 11	CH 12	CH 13	SEC 304	TOTAL
JAN	307	10	0	92	0	409
FEB	288	5	0	106	0	399
MAR	483	6	0	109	0	598
APR	424	2	0	113	0	539
MAY	497	2	0	96	0	595
JUN	470	3	0	118	0	591
JUL	425	2	0	82	0	509
AUG	452	1	0	99	0	552
SEP						0
OCT						0
NOV						0
DEC						0
TOTALS	3346	31	0	815	0	4192

SHF	CH 7	CH 11	CH 12	CH 13	SEC 304	TOTAL
JAN	269	1	0	76	0	346
FEB	267	3	0	109	0	379
MAR	376	3	0	107	0	486
APR	332	1	0	95	0	428
MAY	343	0	0	81	0	424
JUN	348	0	0	85	0	433
JUL	321	5	0	95	0	421
AUG	296	0	0	71	0	367
SEP						0
OCT						0
NOV						0
DEC						0
TOTALS	2552	13	0	719	0	3284

PGH	CH 7	CH 11	CH 12	CH 13	SEC 304	TOTAL
JAN	262	1	0	124	0	387
FEB	274	2	0	123	0	399
MAR	376	5	0	131	0	512
APR	352	1	0	120	0	473
MAY	334	1	0	111	0	446
JUN	354	4	0	108	0	466
JUL	316	7	0	87	0	410
AUG	291	2	0	88	0	381
SEP						0
OCT						0
NOV						0
DEC						0
TOTALS	2559	23	0	892	0	3474

RAM	CH 7	CH 11	CH 12	CH 13	SEC 304	TOTAL
JAN	305	7	0	91	0	403
FEB	287	7	0	103	0	397
MAR	483	3	0	113	0	599
APR	427	2	0	109	0	538
MAY	495	2	0	94	0	591
JUN	469	2	0	117	0	588
JUL	428	2	0	81	0	511
AUG	451	1	0	96	1	549
SEP						0
OCT						0
NOV						0
DEC						0
TOTALS	3345	26	0	804	1	4176

RBR	CH 7	CH 11	CH 12	CH 13	SEC 304	TOTAL
JAN	254	1	0	114	0	369
FEB	265	0	0	131	0	396
MAR	388	2	0	129	0	519
APR	347	0	0	118	0	465
MAY	329	2	0	110	0	441
JUN	362	1	0	111	0	474
JUL	303	1	0	85	0	389
AUG	297	1	0	91	0	389
SEP						0
OCT						0
NOV						0
DEC						0
TOTALS	2545	8	0	889	0	3442

**2004 YEAR-TO-DATE COMPARISON OF BANKRUPTCY CASE FILINGS
BY JUDGE**

	AJC	SHF	PGH	RAM	RBR	TOTAL
JAN	409	346	387	403	369	1914
FEB	399	379	399	397	396	1970
MAR	598	486	512	599	519	2714
APR	539	428	473	538	465	2443
MAY	595	424	446	591	441	2497
JUN	591	433	466	588	474	2552
JUL	509	421	410	511	389	2240
AUG	552	367	381	549	389	2238
SEP	0	0	0	0	0	0
OCT	0	0	0	0	0	0
NOV	0	0	0	0	0	0
DEC	0	0	0	0	0	0
TOTALS	4192	3284	3474	4176	3442	18568
% of Total	22.58	17.69	18.71	22.49	18.54	

**2004 YEAR-TO-DATE COMPARISON OF BANKRUPTCY CASE FILINGS
BY JUDGE/CHAPTER**

	CH 7	CH 11	CH 12	CH 13	SEC 304	TOTAL
AJC	3346	31	0	815	0	4192
SHF	2552	13	0	719	0	3284
PGH	2559	23	0	892	0	3474
RAM	3345	26	0	804	1	4176
RBR	2545	8	0	889	0	3442
TOTALS	14347	101	0	4119	1	18568

CALENDAR YEAR-TO-DATE COMPARISON

	ENDING AUG 04	ENDING AUG 03	PERCENT CHANGE
Bankruptcy Case Filings	18568	21454	-13.45
Bankruptcy Case Closings	19934	20656	-3.50
Adversary Filings	925	2199	-57.94
Adversary Closings	1248	1459	-14.46

12-MONTH/THREE YEAR COMPARISON

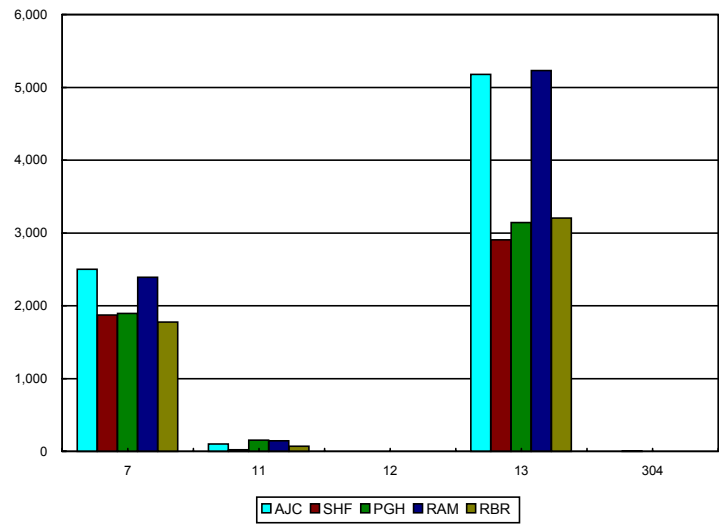
	ENDING AUG 04	ENDING AUG 03	ENDING AUG 02	% CHANGE 04/03	% CHANGE 04/02
Bankruptcy Case Filings	28303	32244	34076	-12.22	-16.94
Bankruptcy Case Closings	30640	30975	29890	-1.08	2.51
Adversary Filings	1497	2589	1358	-42.18	10.24
Adversary Closings	2278	1914	1245	19.02	82.97

MONTHLY COMPARISON

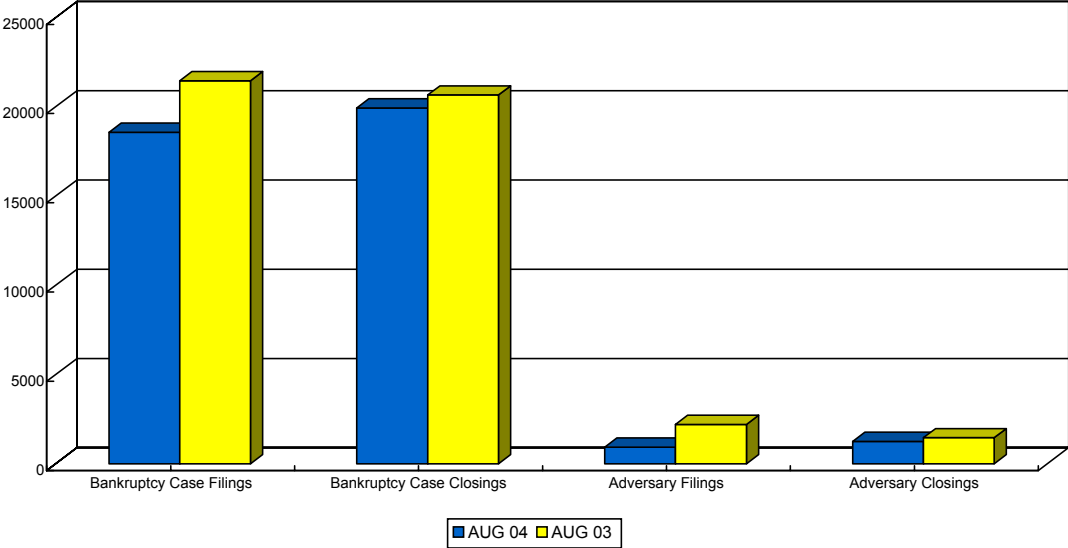
	AUG 04	AUG 03	PERCENT CHANGE
Bankruptcy Case Filings	2238	2504	-10.62
Bankruptcy Case Closings	2515	2450	2.65
Adversary Filings	104	193	-46.11
Adversary Closings	100	283	-64.66

*Filings and Closings for Dade Division includes Monroe County
 Filings and Closings for Palm Beach Division includes Indian River, Highlands, Martin,
 St. Lucie & Okeechobee Counties*

TOTAL PENDING CASELOAD BY JUDGE/CHAPTER



CALENDAR YEAR-TO-DATE COMPARISON



12-MONTH/THREE YEAR COMPARISON

