

UNITED STATES BANKRUPTCY COURT

SOUTHERN DISTRICT OF FLORIDA

*51 S.W. 1st Avenue
Room 1401
Miami, FL 33130*

*Karen Eddy
Clerk of Court*



MONTHLY STATISTICAL REPORT

JULY 2004

MONTHLY STATISTICAL REPORT

TABLE OF CONTENTS

	<i>page</i>
<i>I. MONTHLY SARD SUMMARY REPORT</i>	<i>2</i>
<i>II. BK CASE FILINGS SUMMARY REPORT</i>	<i>3</i>
<i>III. BK CASE CLOSINGS SUMMARY REPORT</i>	<i>4</i>
<i>IV. AP CASE FILINGS SUMMARY REPORT</i>	<i>5</i>
<i>V. AP CASE CLOSINGS SUMMARY REPORT</i>	<i>6</i>
<i>VI. BK PRO SE CASES FILING SUMMARY REPORT</i>	<i>7</i>
<i>VII. PENDING CASELOAD REPORT BY JUDGE/CHAPTER</i>	<i>8</i>
<i>VIII. DIVISIONAL CASELOAD REPORT</i>	<i>9</i>
<i>IX. CASE FILING BREAKDOWN BY COUNTY</i>	<i>10</i>
<i>X. BREAKDOWN BY NATURE OF DEBTOR</i>	<i>11</i>
<i>XI. BREAKDOWN BY COUNTY / NATURE - CONSUMER</i>	<i>12</i>
<i>XII. BREAKDOWN BY COUNTY / NATURE - BUSINESS</i>	<i>13</i>
<i>XIII. SUMMARIES AND GRAPHS</i>	<i>14 - 18</i>

JULY 2004
MONTHLY SARD REPORT SUMMARY

I. BC101 REPORT OF BANKRUPTCY CASES

	AJC	SHF	PGH	RAM	RBR	TOTAL
Pending Prior Month	8,021	4,838	5,348	7,967	5,205	31,379
Cases Filed	509	419	409	510	389	2,236
Reopened	15	6	8	10	7	46
Split Cases	0	1	1	0	0	2
Trans. In	0	1	0	1	0	2
Reassigned To	2	1	3	0	0	6
Trans. Out	0	0	0	0	0	0
Reassigned From	0	0	1	2	3	6
Cases Closed	703	488	472	663	498	2,824
Cases Pending	7,844	4,778	5,296	7,823	5,100	30,841

II. BC109 REPORT OF ADVERSARY CASES

	AJC	SHF	PGH	RAM	RBR	TOTAL
Pending Prior Month	123	150	195	107	212	787
Cases Filed	27	17	14	134	14	206
Reassigned To	0	0	0	0	0	0
Cases Reopened	0	0	0	0	0	0
Cases Closed	36	19	8	26	36	125
Reassigned From	0	0	0	0	0	0
Cases Pending	114	148	201	215	190	868

IV. MONTHLY REPORT OF TRIALS AND OTHER ACTIVITY

	Contested Proceedings	Miscellaneous Proceedings	Total Hours in Court
AJC	33	2	35
SHF	10	39	49
PGH	2	15	17
RAM	15	30	45
RBR	1	29	30
Total	61	115	176

UNITED STATES BANKRUPTCY COURT
Southern District of Florida

CASE FILINGS SUMMARY REPORT
For Cases Filed from 07/01/2004 to 07/31/2004
Run Date: 08/04/04

Run Time 08:03

Divisional Breakdown

	Dade					Broward					Palm Beach					
	Ch	7	11	12	13	304	7	11	12	13	304	7	11	12	13	304
Ch	7	11	12	13	304	7	11	12	13	304	7	11	12	13	304	
AJC	425	2	0	82	0	0	0	0	0	0	0	0	0	0	0	
SHF	0	0	0	0	0	0	0	0	0	0	319	5	0	95	0	
PGH	0	0	0	24	0	213	1	0	63	0	102	6	0	0	0	
RAM	428	1	0	81	0	0	0	0	0	0	0	0	0	0	0	
RBR	0	0	0	23	0	303	1	0	61	0	0	0	0	1	0	

Tot	853	3	0	210	0	516	2	0	124	0	421	11	0	96	0	
Divisional Totals	1066					642					528					

Totals By Judge

	Chapter 7	Section 304	Chapter 11	Chapter 12	Chapter 13	Totals
AJC	425	0	2	0	82	509
SHF	319	0	5	0	95	419
PGH	315	0	7	0	87	409
RAM	428	0	1	0	81	510
RBR	303	0	1	0	85	389

Totals	1790	0	16	0	430	

Grand Total: 2236 + 2 + 1 + 1 = 2240

"TOTAL DOES NOT INCLUDE SPLIT, TRANSFERRED IN CASES AND INTRA-DISTRICT CASES FILED PRIOR TO THIS MONTH"

UNITED STATES BANKRUPTCY COURT
Southern District of Florida

CASE CLOSING SUMMARY REPORT
For Cases Closed from 07/01/2004 to 07/31/2004
Run Date: 08/06/04

Run Time 11:44

Divisional Breakdown

Ch	Dade					Broward					Palm Beach				
	7	11	12	13	304	7	11	12	13	304	7	11	12	13	304
AJC	492	1	0	210	0	0	0	0	0	0	0	0	0	0	0
SHF	0	0	0	0	0	0	0	0	0	0	321	0	0	167	0
PGH	3	0	0	38	0	203	1	0	112	0	113	2	0	0	0
RAM	471	2	0	190	0	0	0	0	0	0	0	0	0	0	0
RBR	2	0	0	36	0	297	1	0	162	0	0	0	0	0	0

Tot	968	3	0	474	0	500	2	0	274	0	434	2	0	167	0
Divisional Totals	1445				776					603					

Totals By Judge

	Chapter 7	Section 304	Chapter 11	Chapter 12	Chapter 13	Totals
AJC	492	0	1	0	210	703
SHF	321	0	0	0	167	488
PGH	319	0	3	0	150	472
RAM	471	0	2	0	190	663
RBR	299	0	1	0	198	498

Totals	1902	0	7	0	915	
Grand Total:	2824					

UNITED STATES BANKRUPTCY COURT
Southern District of FloridaAdversary Proceedings Case Filing Report
For Cases Filed from 07/01/2004 to 07/31/2004
Run Time 08:15

Run Date: 08/04/04

Divisional Breakdown

	Dade	Broward	Palm Beach	Totals
AJC	27	0	0	27
SHF	0	0	17	17
PGH	0	9	5	14
RAM	134	0	0	134
RBR	0	13	1	14

Totals	161	22	23	206

UNITED STATES BANKRUPTCY COURT
Southern District of FloridaAdversary Proceedings Case Closing Report
For Cases Closed from 07/01/2004 to 07/31/2004
Run Time 08:15

Run Date: 08/04/04

Divisional Breakdown

	Dade	Broward	Palm Beach	Totals
AJC	36	0	0	36
SHF	0	0	19	19
PGH	0	7	1	8
RAM	26	0	0	26
RBR	1	35	0	36

Totals	63	42	20	125

UNITED STATES BANKRUPTCY COURT
SOUTHERN DISTRICT OF FLORIDA

BANKRUPTCY PRO SE CASES FILING SUMMARY REPORT
For Cases Filed from 07/01/2004 to 07/31/2004

Run Date: 08/05/04

Run Time 13:20

Divisional Breakdown

Ch	Dade					Broward					Palm Beach				
	7	11	12	13	304	7	11	12	13	304	7	11	12	13	304
AJC	19	0	0	17	0	0	0	0	0	0	0	0	0	0	0
SHF	0	0	0	0	0	0	0	0	0	0	50	1	0	10	0
PGH	0	0	0	8	0	31	0	0	13	0	23	0	0	0	0
RAM	17	0	0	13	0	0	0	0	0	0	0	0	0	0	0
RBR	0	0	0	6	0	58	0	0	12	0	0	0	0	0	0

Tot	36	0	0	44	0	89	0	0	25	0	73	1	0	10	0
Divisional Totals					80					114					84

Totals By Judge

	Chapter 7	Section 304	Chapter 11	Chapter 12	Chapter 13	Totals
AJC	19	0	0	0	17	36
SHF	50	0	1	0	10	61
PGH	54	0	0	0	21	75
RAM	17	0	0	0	13	30
RBR	58	0	0	0	18	76

Totals	198	0	1	0	79	278
Grand Total:	278					

PENDING CASELOAD REPORTS BY JUDGE/CHAPTER
JULY 2004

AJC	7	11	12	13	304	ACT	TOTALS
Pending Prior Month	2,553	101	1	5,364	2	0	8,021
Cases Filed	425	2	0	82	0	0	509
Reopened	11	0	0	4	0	0	15
Split Cases	0	0	0	0	0	0	0
Transferred In	0	0	0	0	0	0	0
Reassigned To	1	0	0	1	0	0	2
Converted To	9	0	0	3	0	0	12
Transferred Out	0	0	0	0	0	0	0
Reassigned From	0	0	0	0	0	0	0
Converted From	3	0	0	9	0	0	12
Cases Closed	492	1	0	210	0	0	703
Total Pending	2,504	102	1	5,235	2	0	7,844

SHF	7	11	12	13	304	ACT	TOTALS
Pending Prior Month	1,841	21	0	2,970	6	0	4,838
Cases Filed	319	5	0	95	0	0	419
Reopened	4	0	0	2	0	0	6
Split Cases	1	0	0	0	0	0	1
Transferred In	1	0	0	0	0	0	1
Reassigned To	0	0	0	1	0	0	1
Converted To	9	0	0	5	0	0	14
Transferred Out	0	0	0	0	0	0	0
Reassigned From	0	0	0	0	0	0	0
Converted From	5	0	0	9	0	0	14
Cases Closed	321	0	0	167	0	0	488
Total Pending	1,849	26	0	2,897	6	0	4,778

PGH	7	11	12	13	304	ACT	TOTALS
Pending Prior Month	1,909	151	0	3,287	1	0	5,348
Cases Filed	315	7	0	87	0	0	409
Reopened	5	0	0	3	0	0	8
Split Cases	1	0	0	0	0	0	1
Transferred In	0	0	0	0	0	0	0
Reassigned To	3	0	0	0	0	0	3
Converted To	10	0	0	7	0	0	17
Transferred Out	0	0	0	0	0	0	0
Reassigned From	0	0	0	1	0	0	1
Converted From	7	0	0	10	0	0	17
Cases Closed	319	3	0	150	0	0	472
Total Pending	1,917	155	0	3,223	1	0	5,296

RAM	7	11	12	13	304	ACT	TOTALS
Pending Prior Month	2,428	146	0	5,391	2	0	7,967
Cases Filed	428	1	0	81	0	0	510
Reopened	7	0	0	3	0	0	10
Split Cases	0	0	0	0	0	0	0
Transferred In	0	1	0	0	0	0	1
Reassigned To	0	0	0	0	0	0	0
Converted To	5	0	0	1	0	0	6
Transferred Out	0	0	0	0	0	0	0
Reassigned From	1	0	0	1	0	0	2
Converted From	1	0	0	5	0	0	6
Cases Closed	471	2	0	190	0	0	663
Total Pending	2,395	146	0	5,280	2	0	7,823

RBR	7	11	12	13	304	ACT	TOTALS
Pending Prior Month	1,803	72	0	3,330	0	0	5,205
Cases Filed	303	1	0	85	0	0	389
Reopened	7	0	0	0	0	0	7
Split Cases	0	0	0	0	0	0	0
Transferred In	0	0	0	0	0	0	0
Reassigned To	0	0	0	0	0	0	0
Converted To	8	1	0	1	0	0	10
Transferred Out	0	0	0	0	0	0	0
Reassigned From	3	0	0	0	0	0	3
Converted From	2	0	0	8	0	0	10
Cases Closed	299	1	0	198	0	0	498
Total Pending	1,817	73	0	3,210	0	0	5,100

GRAND TOTAL:	10,482	502	1	19,845	11	0	30,841
---------------------	---------------	------------	----------	---------------	-----------	----------	---------------

AJC PENDING CASE SUMMARY

CHAPTER	DADE DIVISION	BROWARD DIVISION	PALM BEACH DIVISION	TOTAL
7	2,501	1	2	2,504
11	99	3	0	102
12	1	0	0	1
13	5,235	0	0	5,235
304	2	0	0	2
Sub-Total	7,838	4	2	7,844
Act Cases	0	0	0	0
GRAND TOTALS	7,838	4	2	7,844

SHF PENDING CASE SUMMARY

CHAPTER	DADE DIVISION	BROWARD DIVISION	PALM BEACH DIVISION	TOTAL
7	2	2	1,845	1,849
11	0	0	26	26
12	0	0	0	0
13	0	0	2,897	2,897
304	0	0	6	6
Sub-Total	2	2	4,774	4,778
Act Cases	0	0	0	0
GRAND TOTALS	2	2	4,774	4,778

PGH PENDING CASE SUMMARY

CHAPTER	DADE DIVISION	BROWARD DIVISION	PALM BEACH DIVISION	TOTAL
7	27	1,192	698	1,917
11	1	104	50	155
12	0	0	0	0
13	969	2,254	0	3,223
304	0	1	0	1
Sub-Total	997	3,551	748	5,296
Act Cases	0	0	0	0
GRAND TOTALS	997	3,551	748	5,296

RAM PENDING CASE SUMMARY

CHAPTER	DADE DIVISION	BROWARD DIVISION	PALM BEACH DIVISION	TOTAL
7	2,381	0	14	2,395
11	145	0	1	146
12	0	0	0	0
13	5,280	0	0	5,280
304	2	0	0	2
Sub-Total	7,808	0	15	7,823
Act Cases	0	0	0	0
GRAND TOTALS	7,808	0	15	7,823

RBR PENDING CASE SUMMARY

CHAPTER	DADE DIVISION	BROWARD DIVISION	PALM BEACH DIVISION	TOTAL
7	22	1,795	0	1,817
11	0	73	0	73
12	0	0	0	0
13	963	2,246	1	3,210
304	0	0	0	0
Sub-Total	985	4,114	1	5,100
Act Cases	0	0	0	0
GRAND TOTALS	985	4,114	1	5,100

DISTRICT TOTALS	17,630	7,671	5,540	30,841
------------------------	---------------	--------------	--------------	---------------

CASE FILING SUMMARY BY COUNTY

DADE COUNTY - 12025

	7	11	12	13	304	TOTAL
AJC	413	2	0	80	0	495
SHF	0	0	0	0	0	0
PGH	0	0	0	24	0	24
RAM	417	2	0	79	0	498
RBR	0	0	0	23	0	23
Sub-Total	830	4	0	206	0	1040

MONROE COUNTY - 12087

	7	11	12	13	304	TOTAL
AJC	12	0	0	2	0	14
SHF	0	0	0	0	0	0
PGH	0	0	0	0	0	0
RAM	11	0	0	2	0	13
RBR	0	0	0	0	0	0
Sub-Total	23	0	0	4	0	27

Division Total 1067

BROWARD COUNTY - 12011

	7	11	12	13	304	TOTAL
AJC	0	0	0	0	0	0
SHF	0	0	0	0	0	0
PGH	214	1	0	63	0	278
RAM	0	0	0	0	0	0
RBR	303	1	0	61	0	365
Sub-Total	517	2	0	124	0	643

Division Total 643

HIGHLANDS COUNTY - 12055

	7	11	12	13	304	TOTAL
AJC	0	0	0	0	0	0
SHF	18	0	0	2	0	20
PGH	0	0	0	0	0	0
RAM	0	0	0	0	0	0
RBR	0	0	0	0	0	0
Sub-Total	18	0	0	2	0	20

INDIAN RIVER COUNTY - 12061

	7	11	12	13	304	TOTAL
AJC	0	0	0	0	0	0
SHF	22	0	0	1	0	23
PGH	1	0	0	0	0	1
RAM	0	0	0	0	0	0
RBR	0	0	0	0	0	0
Sub-Total	23	0	0	1	0	24

MARTIN COUNTY - 12085

	7	11	12	13	304	TOTAL
AJC	0	0	0	0	0	0
SHF	25	0	0	3	0	28
PGH	11	0	0	0	0	11
RAM	0	0	0	0	0	0
RBR	0	0	0	0	0	0
Sub-Total	36	0	0	3	0	39

OKEECHOBEE COUNTY - 12093

	7	11	12	13	304	TOTAL
AJC	0	0	0	0	0	0
SHF	9	0	0	6	0	15
PGH	0	0	0	0	0	0
RAM	0	0	0	0	0	0
RBR	0	0	0	0	0	0
Sub-Total	9	0	0	6	0	15

PALM BEACH COUNTY - 12099

	7	11	12	13	304	TOTAL
AJC	0	0	0	0	0	0
SHF	181	4	0	66	0	251
PGH	2	6	0	86	0	94
RAM	0	0	0	0	0	0
RBR	0	0	0	1	0	1
Sub-Total	183	10	0	153	0	346

ST. LUCIE - 12111

	7	11	12	13	304	TOTAL
AJC	0	0	0	0	0	0
SHF	66	1	0	17	0	84
PGH	2	0	0	0	0	2
RAM	0	0	0	0	0	0
RBR	0	0	0	0	0	0
Sub-Total	68	1	0	17	0	86

Division Total 530

GRAND TOTAL	1707	17	0	516	0	2240
--------------------	-------------	-----------	----------	------------	----------	-------------

JULY 2004

CASE FILING SUMMARY BY NATURE OF DEBTOR/DIVISION

CHAPTER	BUSINESS				CONSUMER				TOTAL
	DADE	BROWARD	PALM BCH	DIV. TOTAL	DADE	BROWARD	PALM BCH	DIV. TOTAL	
7	12	5	8	25	841	512	415	1768	1793
11	4	1	11	16	0	1	0	1	17
12	0	0	0	0	0	0	0	0	0
13	0	0	2	2	210	124	94	428	430
304	0	0	0	0	0	0	0	0	0
TOTAL	16	6	21	43	1051	637	509	2197	2240

DIVISIONAL BUSINESS CASE FILING SUMMARY

DADE DIVISION

CHAPTER	AJC	SHF	PGH	RAM	RBR	TOTAL
7	8	0	0	4	0	12
11	2	0	0	2	0	4
12	0	0	0	0	0	0
13	0	0	0	0	0	0
304	0	0	0	0	0	0
Sub-Total	10	0	0	6	0	16

BROWARD DIVISION

CHAPTER	AJC	SHF	PGH	RAM	RBR	TOTAL
7	0	0	1	0	4	5
11	0	0	0	0	1	1
12	0	0	0	0	0	0
13	0	0	0	0	0	0
304	0	0	0	0	0	0
Sub-Total	0	0	1	0	5	6

PALM BEACH DIVISION

CHAPTER	AJC	SHF	PGH	RAM	RBR	TOTAL
7	0	6	2	0	0	8
11	0	5	6	0	0	11
12	0	0	0	0	0	0
13	0	2	0	0	0	2
304	0	0	0	0	0	0
Sub-Total	0	13	8	0	0	21
GRAND TOTAL	10	13	9	6	5	43

DIVISIONAL CONSUMER CASE FILING SUMMARY

DADE DIVISION

CHAPTER	AJC	SHF	PGH	RAM	RBR	TOTAL
7	417	0	0	424	0	841
11	0	0	0	0	0	0
12	0	0	0	0	0	0
13	82	0	24	81	23	210
304	0	0	0	0	0	0
Sub-Total	499	0	24	505	23	1051

BROWARD DIVISION

CHAPTER	AJC	SHF	PGH	RAM	RBR	TOTAL
7	0	0	213	0	299	512
11	0	0	1	0	0	1
12	0	0	0	0	0	0
13	0	0	63	0	61	124
304	0	0	0	0	0	0
Sub-Total	0	0	277	0	360	637

PALM BEACH DIVISION

CHAPTER	AJC	SHF	PGH	RAM	RBR	TOTAL
7	0	315	100	0	0	415
11	0	0	0	0	0	0
12	0	0	0	0	0	0
13	0	93	0	0	1	94
304	0	0	0	0	0	0
Sub-Total	0	408	100	0	1	509
GRAND TOTAL	499	408	401	505	384	2197

CASE FILING SUMMARY BY COUNTY / CONSUMER - BUSINESS

CONSUMERS

DADE COUNTY - 12025

	7	11	12	13	304	TOTAL
AJC	407	0	0	80	0	487
SHF	0	0	0	0	0	0
PGH	0	0	0	24	0	24
RAM	414	0	0	79	0	493
RBR	0	0	0	23	0	23
Sub-Total	821	0	0	206	0	1027

MONROE COUNTY - 12087

	7	11	12	13	304	TOTAL
AJC	10	0	0	2	0	12
SHF	0	0	0	0	0	0
PGH	0	0	0	0	0	0
RAM	10	0	0	2	0	12
RBR	0	0	0	0	0	0
Sub-Total	20	0	0	4	0	24

0 Division
24 Total 1051

BROWARD COUNTY - 12011

	7	11	12	13	304	TOTAL
AJC	0	0	0	0	0	0
SHF	0	0	0	0	0	0
PGH	213	1	0	63	0	277
RAM	0	0	0	0	0	0
RBR	299	0	0	61	0	360
Sub-Total	512	1	0	124	0	637

360 Division
637 Total 637

HIGHLANDS COUNTY - 12055

	7	11	12	13	304	TOTAL
AJC	0	0	0	0	0	0
SHF	18	0	0	2	0	20
PGH	0	0	0	0	0	0
RAM	0	0	0	0	0	0
RBR	0	0	0	0	0	0
Sub-Total	18	0	0	2	0	20

INDIAN RIVER COUNTY - 12061

	7	11	12	13	304	TOTAL
AJC	0	0	0	0	0	0
SHF	22	0	0	1	0	23
PGH	1	0	0	0	0	1
RAM	0	0	0	0	0	0
RBR	0	0	0	0	0	0
Sub-Total	23	0	0	1	0	24

MARTIN COUNTY - 12085

	7	11	12	13	304	TOTAL
AJC	0	0	0	0	0	0
SHF	24	0	0	2	0	26
PGH	11	0	0	0	0	11
RAM	0	0	0	0	0	0
RBR	0	0	0	0	0	0
Sub-Total	35	0	0	2	0	37

OKEECHOBEE COUNTY - 12093

	7	11	12	13	304	TOTAL
AJC	0	0	0	0	0	0
SHF	8	0	0	6	0	14
PGH	0	0	0	0	0	0
RAM	0	0	0	0	0	0
RBR	0	0	0	0	0	0
Sub-Total	8	0	0	6	0	14

PALM BEACH COUNTY - 12099

	7	11	12	13	304	TOTAL
AJC	0	0	0	0	0	0
SHF	178	0	0	65	0	243
PGH	0	0	0	86	0	86
RAM	0	0	0	0	0	0
RBR	0	0	0	1	0	1
Sub-Total	178	0	0	152	0	330

ST. LUCIE - 12111

	7	11	12	13	304	TOTAL
AJC	0	0	0	0	0	0
SHF	65	0	0	17	0	82
PGH	2	0	0	0	0	2
RAM	0	0	0	0	0	0
RBR	0	0	0	0	0	0
Sub-Total	67	0	0	17	0	84

0 Division
84 Total 509

GRAND TOTAL	1682	1	0	514	0	2197
--------------------	-------------	----------	----------	------------	----------	-------------

CASE FILING SUMMARY BY COUNTY / CONSUMER - BUSINESS
BUSINESS

DADE COUNTY - 12025						
	7	11	12	13	304	TOTAL
AJC	6	2	0	0	0	8
SHF	0	0	0	0	0	0
PGH	0	0	0	0	0	0
RAM	3	2	0	0	0	5
RBR	0	0	0	0	0	0
Sub-Total	9	4	0	0	0	13

MONROE COUNTY - 12087						
	7	11	12	13	304	TOTAL
AJC	2	0	0	0	0	2
SHF	0	0	0	0	0	0
PGH	0	0	0	0	0	0
RAM	1	0	0	0	0	1
RBR	0	0	0	0	0	0
Sub-Total	3	0	0	0	0	3
						0 Division
						3 Total

BROWARD COUNTY - 12011						
	7	11	12	13	304	TOTAL
AJC	0	0	0	0	0	0
SHF	0	0	0	0	0	0
PGH	1	0	0	0	0	1
RAM	0	0	0	0	0	0
RBR	4	1	0	0	0	5
Sub-Total	5	1	0	0	0	6
						5 Division
						6 Total

HIGHLANDS COUNTY - 12055						
	7	11	12	13	304	TOTAL
AJC	0	0	0	0	0	0
SHF	0	0	0	0	0	0
PGH	0	0	0	0	0	0
RAM	0	0	0	0	0	0
RBR	0	0	0	0	0	0
Sub-Total	0	0	0	0	0	0

INDIAN RIVER COUNTY - 12061						
	7	11	12	13	304	TOTAL
AJC	0	0	0	0	0	0
SHF	0	0	0	0	0	0
PGH	0	0	0	0	0	0
RAM	0	0	0	0	0	0
RBR	0	0	0	0	0	0
Sub-Total	0	0	0	0	0	0

MARTIN COUNTY - 12085						
	7	11	12	13	304	TOTAL
AJC	0	0	0	0	0	0
SHF	1	0	0	1	0	2
PGH	0	0	0	0	0	0
RAM	0	0	0	0	0	0
RBR	0	0	0	0	0	0
Sub-Total	1	0	0	1	0	2

OKEECHOBEE COUNTY - 12093						
	7	11	12	13	304	TOTAL
AJC	0	0	0	0	0	0
SHF	1	0	0	0	0	1
PGH	0	0	0	0	0	0
RAM	0	0	0	0	0	0
RBR	0	0	0	0	0	0
Sub-Total	1	0	0	0	0	1

PALM BEACH COUNTY - 12099						
	7	11	12	13	304	TOTAL
AJC	0	0	0	0	0	0
SHF	3	4	0	1	0	8
PGH	2	6	0	0	0	8
RAM	0	0	0	0	0	0
RBR	0	0	0	0	0	0
Sub-Total	5	10	0	1	0	16

ST. LUCIE - 12111						
	7	11	12	13	304	TOTAL
AJC	0	0	0	0	0	0
SHF	1	1	0	0	0	2
PGH	0	0	0	0	0	0
RAM	0	0	0	0	0	0
RBR	0	0	0	0	0	0
Sub-Total	1	1	0	0	0	2
						0 Division
						2 Total

GRAND TOTAL						
	7	11	12	13	304	TOTAL
	25	16	0	2	0	43

AJC	CH 7	CH 11	CH 12	CH 13	SEC 304	TOTAL
JAN	307	10	0	92	0	409
FEB	288	5	0	106	0	399
MAR	483	6	0	109	0	598
APR	424	2	0	113	0	539
MAY	497	2	0	96	0	595
JUN	470	3	0	118	0	591
JUL	425	2	0	82	0	509
AUG						0
SEP						0
OCT						0
NOV						0
DEC						0
TOTALS	2894	30	0	716	0	3640

SHF	CH 7	CH 11	CH 12	CH 13	SEC 304	TOTAL
JAN	269	1	0	76	0	346
FEB	267	3	0	109	0	379
MAR	376	3	0	107	0	486
APR	332	1	0	95	0	428
MAY	343	0	0	81	0	424
JUN	348	0	0	85	0	433
JUL	321	5	0	95	0	421
AUG						0
SEP						0
OCT						0
NOV						0
DEC						0
TOTALS	2256	13	0	648	0	2917

PGH	CH 7	CH 11	CH 12	CH 13	SEC 304	TOTAL
JAN	262	1	0	124	0	387
FEB	274	2	0	123	0	399
MAR	376	5	0	131	0	512
APR	352	1	0	120	0	473
MAY	334	1	0	111	0	446
JUN	354	4	0	108	0	466
JUL	316	7	0	87	0	410
AUG						0
SEP						0
OCT						0
NOV						0
DEC						0
TOTALS	2268	21	0	804	0	3093

RAM	CH 7	CH 11	CH 12	CH 13	SEC 304	TOTAL
JAN	305	7	0	91	0	403
FEB	287	7	0	103	0	397
MAR	483	3	0	113	0	599
APR	427	2	0	109	0	538
MAY	495	2	0	94	0	591
JUN	469	2	0	117	0	588
JUL	428	2	0	81	0	511
AUG						0
SEP						0
OCT						0
NOV						0
DEC						0
TOTALS	2894	25	0	708	0	3627

RBR	CH 7	CH 11	CH 12	CH 13	SEC 304	TOTAL
JAN	254	1	0	114	0	369
FEB	265	0	0	131	0	396
MAR	388	2	0	129	0	519
APR	347	0	0	118	0	465
MAY	329	2	0	110	0	441
JUN	362	1	0	111	0	474
JUL	303	1	0	85	0	389
AUG						0
SEP						0
OCT						0
NOV						0
DEC						0
TOTALS	2248	7	0	798	0	3053

**2004 YEAR-TO-DATE COMPARISON OF BANKRUPTCY CASE FILINGS
BY JUDGE**

	AJC	SHF	PGH	RAM	RBR	TOTAL
JAN	409	346	387	403	369	1914
FEB	399	379	399	397	396	1970
MAR	598	486	512	599	519	2714
APR	539	428	473	538	465	2443
MAY	595	424	446	591	441	2497
JUN	591	433	466	588	474	2552
JUL	509	421	410	511	389	2240
AUG	0	0	0	0	0	0
SEP	0	0	0	0	0	0
OCT	0	0	0	0	0	0
NOV	0	0	0	0	0	0
DEC	0	0	0	0	0	0
TOTALS	3640	2917	3093	3627	3053	16330
% of Total	22.29	17.86	18.94	22.21	18.70	

**2004 YEAR-TO-DATE COMPARISON OF BANKRUPTCY CASE FILINGS
BY JUDGE/CHAPTER**

	CH 7	CH 11	CH 12	CH 13	SEC 304	TOTAL
AJC	2894	30	0	716	0	3640
SHF	2256	13	0	648	0	2917
PGH	2268	21	0	804	0	3093
RAM	2894	25	0	708	0	3627
RBR	2248	7	0	798	0	3053
TOTALS	12560	96	0	3674	0	16330

CALENDAR YEAR-TO-DATE COMPARISON

	ENDING JUL 04	ENDING JUL 03	PERCENT CHANGE
Bankruptcy Case Filings	16330	18950	-13.83
Bankruptcy Case Closings	17419	18206	-4.32
Adversary Filings	821	2006	-59.07
Adversary Closings	1148	1176	-2.38

12-MONTH/THREE YEAR COMPARISON

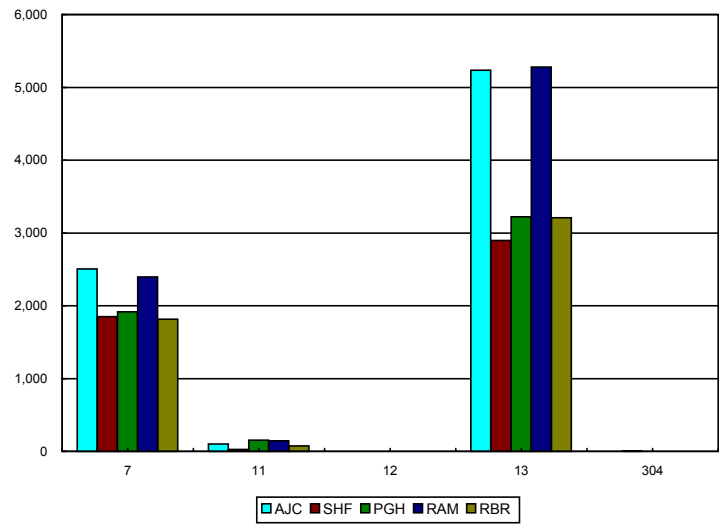
	ENDING JUL 04	ENDING JUL 03	ENDING JUL 02	% CHANGE 04/03	% CHANGE 04/02
Bankruptcy Case Filings	28569	32662	33760	-12.53	-15.38
Bankruptcy Case Closings	30585	31134	30250	-1.76	1.11
Adversary Filings	1586	2496	1386	-36.46	14.43
Adversary Closings	2461	1729	1279	42.34	92.42

MONTHLY COMPARISON

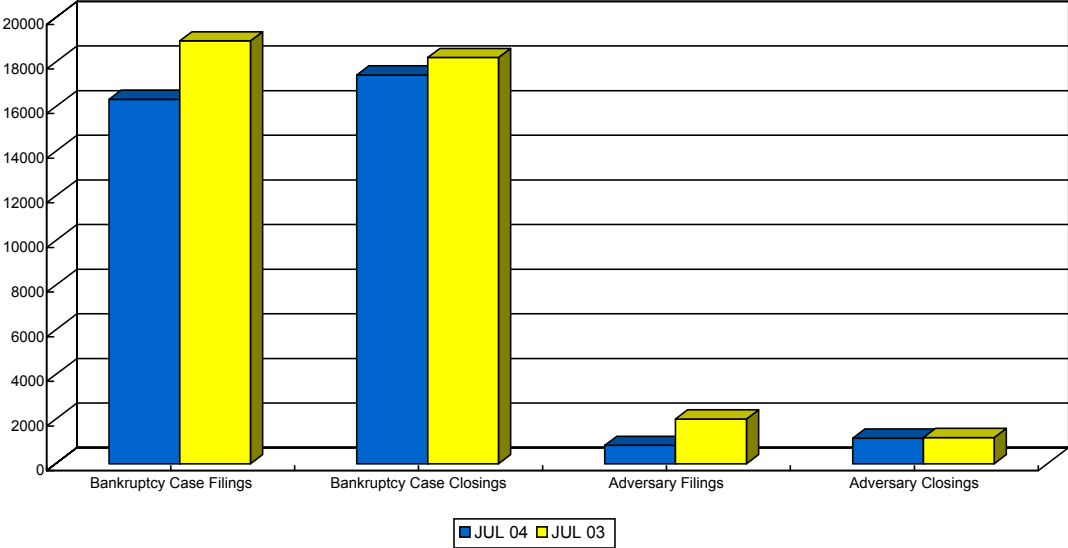
	JUL 04	JUL 03	PERCENT CHANGE
Bankruptcy Case Filings	2240	2922	-23.34
Bankruptcy Case Closings	2824	2930	-3.62
Adversary Filings	206	405	-49.14
Adversary Closings	125	269	-53.53

*Filings and Closings for Dade Division includes Monroe County
 Filings and Closings for Palm Beach Division includes Indian River, Highlands, Martin,
 St. Lucie & Okeechobee Counties*

TOTAL PENDING CASELOAD BY JUDGE/CHAPTER



CALENDAR YEAR-TO-DATE COMPARISON



12-MONTH/THREE YEAR COMPARISON

