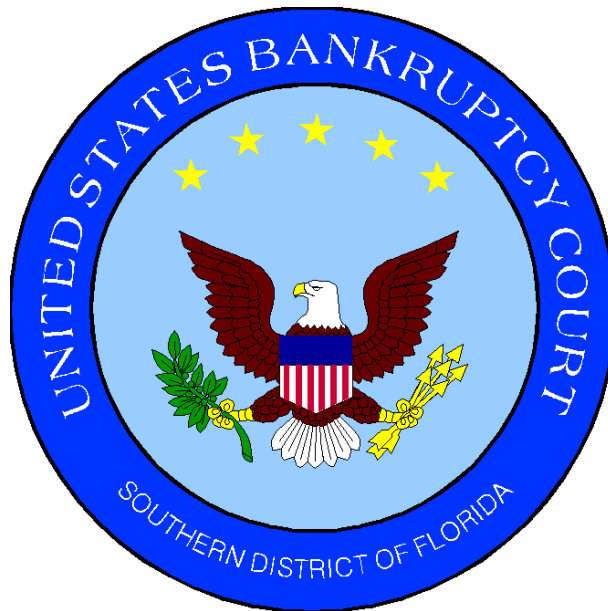


# UNITED STATES BANKRUPTCY COURT

## *SOUTHERN DISTRICT OF FLORIDA*

*51 S.W. 1st Avenue  
Room 1401  
Miami, FL 33130*

*Katherine Gould-Feldman  
Clerk of Court*



## MONTHLY STATISTICAL REPORT

**June 2008**

# **MONTHLY STATISTICAL REPORT**

## **TABLE OF CONTENTS**

	<i>page</i>
<i>I. MONTHLY SARD SUMMARY REPORT</i>	<i>2</i>
<i>II. BK CASE FILINGS SUMMARY REPORT</i>	<i>3</i>
<i>III. BK CASE CLOSINGS SUMMARY REPORT</i>	<i>4</i>
<i>IV. AP CASE FILINGS SUMMARY REPORT</i>	<i>3</i>
<i>V. AP CASE CLOSINGS SUMMARY REPORT</i>	<i>4</i>
<i>VI. BK PRO SE CASES FILING SUMMARY REPORT</i>	<i>5</i>
<i>VII. PENDING CASELOAD REPORT BY JUDGE/CHAPTER</i>	<i>6</i>
<i>VIII. DIVISIONAL CASELOAD REPORT</i>	<i>7</i>
<i>IX. CASE FILING BREAKDOWN BY COUNTY</i>	<i>8</i>
<i>X. BREAKDOWN BY NATURE OF DEBTOR</i>	<i>9</i>
<i>XI. BREAKDOWN BY COUNTY / NATURE - CONSUMER</i>	<i>10</i>
<i>XII. BREAKDOWN BY COUNTY / NATURE - BUSINESS</i>	<i>11</i>
<i>XIII. SUMMARIES AND GRAPHS</i>	<i>12 - 16</i>

**JUNE 2008  
MONTHLY SARD REPORT SUMMARY**

**I. BC101 REPORT OF BANKRUPTCY CASES**

	<b>AJC</b>	<b>LMI</b>	<b>RAM</b>	<b>JKO</b>	<b>RBR</b>	<b>PGH</b>	<b>EPK</b>	<b>TOTAL</b>
Pending Prior Month	2,792	1,998	2,811	2,471	2,547	4,113	2	16,734
Cases Filed	270	275	262	252	255	454	0	1,768
Reopened	7	8	9	3	6	4	0	37
Split Cases	0	0	0	0	0	0	0	0
Trans. In	0	0	0	0	0	0	0	0
Reassigned To	0	0	0	0	0	0	0	0
Trans. Out	0	0	0	0	0	0	0	0
Reassigned From	0	0	0	0	0	0	0	0
Cases Closed	275	208	280	182	170	365	0	1,480
<b>Cases Pending</b>	<b>2,794</b>	<b>2,073</b>	<b>2,802</b>	<b>2,544</b>	<b>2,638</b>	<b>4,206</b>	<b>2</b>	<b>17,059</b>

**II. BC109 REPORT OF ADVERSARY CASES**

	<b>AJC</b>	<b>LMI</b>	<b>RAM</b>	<b>JKO</b>	<b>RBR</b>	<b>PGH</b>	<b>EPK</b>	<b>TOTAL</b>
Pending Prior Month	65	47	38	106	149	108	0	513
Cases Filed	5	2	20	12	3	17	0	59
Trans. In	0	0	0	0	0	0	0	0
Reassigned To	0	0	0	0	0	0	0	0
Cases Reopened	0	0	0	0	0	0	0	0
Cases Closed	6	7	8	8	38	0	0	67
Trans. Out	0	0	0	0	0	0	0	0
Reassigned From	0	0	0	0	0	0	0	0
<b>Cases Pending</b>	<b>64</b>	<b>42</b>	<b>50</b>	<b>110</b>	<b>114</b>	<b>125</b>	<b>0</b>	<b>505</b>

**IV. MONTHLY REPORT OF TRIALS AND OTHER ACTIVITY**

	<b>Contested Proceedings</b>	<b>Miscellaneous Proceedings</b>	<b>Total Hours in Court</b>
AJC	7	31	38
PGH	6	19	25
LMI	28	16	44
RAM	4	21	25
JKO	13	21	34
RBR	2	18	20
EPK			0
<b>Total</b>	<b>60</b>	<b>126</b>	<b>186</b>

Cases Summary Report Group By Person Office  
New Filed: 06/01/2008 - 06/30/2008

Judge	Office	Ch7	Ch9	Ch11	Ch12	Ch13	Ch15	304	Total	Adv	Mis
AJC	Miami	206	0	4	0	60	0	0	270	5	0
LMI	Miami	200	0	18	0	57	0	0	275	2	0
RAM	Miami	203	0	0	0	59	0	0	262	20	0
JKO	Broward	168	0	3	1	80	0	0	252	12	0
RBR	Broward	171	0	2	0	82	0	0	255	3	0
EPK	WPB	307	0	2	0	0	0	0	309	0	0
PGH	WPB	32	0	0	0	113	0	0	145	17	0
Total		1287	0	29	1	451	0	0	1768	59	0

NOTE: All cases shown for Judge Kimball were assigned to Judge Hyman and reassigned to Judge Kimball.

Cases Summary Report Group By Person Office  
Closed: 06/01/2008 - 06/30/2008

4

Judge	Office	Ch7	Ch9	Ch11	Ch12	Ch13	Ch15	304	Total	Adv	Mis
AJC	Miami	173	0	3	0	99	0	0	275	6	0
LMI	Miami	157	0	2	0	49	0	0	208	7	0
RAM	Miami	180	0	2	0	98	0	0	280	8	0
JKO	Broward	128	0	9	0	45	0	0	182	8	0
PGH	Broward	0	0	1	0	0	0	0	1	0	0
RBR	Broward	122	0	1	0	46	0	0	169	38	0
PGH	WPB	298	0	1	0	65	0	0	364	0	0
RBR	WPB	0	0	1	0	0	0	0	1	0	0
Total		1058	0	20	0	402	0	0	1480	67	0

Cases Summary Report Group By Person Office  
Pro Se: 06/01/2008 - 06/30/2008

5

Judge	Office	Ch7	Ch9	Ch11	Ch12	Ch13	Ch15	304	Total	Adv	Mis
AJC	Miami	1	0	0	0	15	0	0	16	0	0
LMI	Miami	4	0	1	0	14	0	0	19	0	0
RAM	Miami	3	0	0	0	15	0	0	18	1	0
JKO	Broward	26	0	0	0	8	0	0	34	0	0
RBR	Broward	22	0	0	0	7	0	0	29	0	0
EPK	WPB	29	0	0	0	0	0	0	29	0	0
PGH	WPB	0	0	0	0	2	0	0	2	1	0
Total		85	0	1	0	61	0	0	147	2	0

NOTE: All cases shown for Judge Kimball were assigned to Judge Hyman and reassigned to Judge Kimball.

**PENDING CASELOAD REPORTS BY JUDGE/CHAPTER**  
**JUNE 2008**

<b>AJC</b>	<b>7</b>	<b>11</b>	<b>12</b>	<b>13</b>	<b>15</b>	<b>304</b>	<b>TOTALS</b>
Pending Prior Month	1,075	80	1	1,632	0	4	2,792
Cases Filed	206	4	0	60	0	0	270
Reopened	6	0	0	1	0	0	7
Split Cases	0	0	0	0	0	0	0
Transferred In	0	0	0	0	0	0	0
Reassigned To	4	0	0	0	0	0	4
Converted To	7	0	0	0	0	0	7
Transferred Out	0	0	0	0	0	0	0
Reassigned From	0	0	0	0	0	0	0
Converted From	0	2	0	5	0	0	7
Cases Closed	173	3	0	99	0	0	275
<b>Total Pending</b>	<b>1,125</b>	<b>79</b>	<b>1</b>	<b>1,589</b>	<b>0</b>	<b>4</b>	<b>2,798</b>
<b>PGH</b>	<b>7</b>	<b>11</b>	<b>12</b>	<b>13</b>	<b>15</b>	<b>304</b>	<b>TOTALS</b>
Pending Prior Month	1,862	105	1	2,145	0	0	4,113
Cases Filed	339	2	0	113	0	0	454
Reopened	4	0	0	0	0	0	4
Split Cases	0	0	0	0	0	0	0
Transferred In	0	0	0	0	0	0	0
Reassigned To	0	0	0	0	0	0	0
Converted To	6	0	0	0	0	0	6
Transferred Out	0	0	0	0	0	0	0
Reassigned From	0	0	0	0	0	0	0
Converted From	0	1	0	5	0	0	6
Cases Closed	298	2	0	65	0	0	365
<b>Total Pending</b>	<b>1,913</b>	<b>104</b>	<b>1</b>	<b>2,188</b>	<b>0</b>	<b>0</b>	<b>4,206</b>
<b>LMI</b>	<b>7</b>	<b>11</b>	<b>12</b>	<b>13</b>	<b>15</b>	<b>304</b>	<b>TOTALS</b>
Pending Prior Month	1,011	56	1	928	2	0	1,998
Cases Filed	200	18	0	57	0	0	275
Reopened	6	0	0	2	0	0	8
Split Cases	0	0	0	0	0	0	0
Transferred In	0	0	0	0	0	0	0
Reassigned To	0	0	0	0	0	0	0
Converted To	5	0	0	0	0	0	5
Transferred Out	0	0	0	0	0	0	0
Reassigned From	4	0	0	0	0	0	4
Converted From	0	4	0	1	0	0	5
Cases Closed	157	2	0	49	0	0	208
<b>Total Pending</b>	<b>1,061</b>	<b>68</b>	<b>1</b>	<b>937</b>	<b>2</b>	<b>0</b>	<b>2,069</b>
<b>RAM</b>	<b>7</b>	<b>11</b>	<b>12</b>	<b>13</b>	<b>15</b>	<b>304</b>	<b>TOTALS</b>
Pending Prior Month	1,093	47	0	1,668	1	2	2,811
Cases Filed	203	0	0	59	0	0	262
Reopened	4	0	0	5	0	0	9
Split Cases	0	0	0	0	0	0	0
Transferred In	0	0	0	0	0	0	0
Reassigned To	0	0	0	0	0	0	0
Converted To	1	0	0	0	0	0	1
Transferred Out	0	0	0	0	0	0	0
Reassigned From	0	0	0	0	0	0	0
Converted From	0	0	0	1	0	0	1
Cases Closed	180	2	0	98	0	0	280
<b>Total Pending</b>	<b>1,121</b>	<b>45</b>	<b>0</b>	<b>1,633</b>	<b>1</b>	<b>2</b>	<b>2,802</b>
<b>JKO</b>	<b>7</b>	<b>11</b>	<b>12</b>	<b>13</b>	<b>15</b>	<b>304</b>	<b>TOTALS</b>
Pending Prior Month	1,046	84	0	1,341	0	0	2,471
Cases Filed	168	3	1	80	0	0	252
Reopened	2	0	0	1	0	0	3
Split Cases	0	0	0	0	0	0	0
Transferred In	0	0	0	0	0	0	0
Reassigned To	0	0	0	0	0	0	0
Converted To	6	0	0	0	0	0	6
Transferred Out	0	0	0	0	0	0	0
Reassigned From	0	0	0	0	0	0	0
Converted From	0	1	0	5	0	0	6
Cases Closed	128	9	0	45	0	0	182
<b>Total Pending</b>	<b>1,094</b>	<b>77</b>	<b>1</b>	<b>1,372</b>	<b>0</b>	<b>0</b>	<b>2,544</b>
<b>RBR</b>	<b>7</b>	<b>11</b>	<b>12</b>	<b>13</b>	<b>15</b>	<b>304</b>	<b>TOTALS</b>
Pending Prior Month	1,067	109	0	1,371	0	0	2,547
Cases Filed	171	2	0	82	0	0	255
Reopened	5	0	0	1	0	0	6
Split Cases	0	0	0	0	0	0	0
Transferred In	0	0	0	0	0	0	0
Reassigned To	0	0	0	0	0	0	0
Converted To	4	0	0	0	0	0	4
Transferred Out	0	0	0	0	0	0	0
Reassigned From	0	0	0	0	0	0	0
Converted From	0	1	0	3	0	0	4
Cases Closed	122	2	0	46	0	0	170
<b>Total Pending</b>	<b>1,125</b>	<b>108</b>	<b>0</b>	<b>1,405</b>	<b>0</b>	<b>0</b>	<b>2,638</b>
<b>EPK</b>	<b>7</b>	<b>11</b>	<b>12</b>	<b>13</b>	<b>15</b>	<b>304</b>	<b>TOTALS</b>
Pending Prior Month	2	0	0	0	0	0	2
Cases Filed	0	0	0	0	0	0	0
Reopened	0	0	0	0	0	0	0
Split Cases	0	0	0	0	0	0	0
Transferred In	0	0	0	0	0	0	0
Reassigned To	0	0	0	0	0	0	0
Converted To	0	0	0	0	0	0	0
Transferred Out	0	0	0	0	0	0	0
Reassigned From	0	0	0	0	0	0	0
Converted From	0	0	0	0	0	0	0
Cases Closed	0	0	0	0	0	0	0
<b>Total Pending</b>	<b>2</b>	<b>0</b>	<b>0</b>	<b>0</b>	<b>0</b>	<b>0</b>	<b>2</b>
<b>GRAND TOTAL:</b>	<b>7,441</b>	<b>481</b>	<b>4</b>	<b>9,124</b>	<b>3</b>	<b>6</b>	<b>17,059</b>

**AJC PENDING CASE SUMMARY**

CHAPTER	DADE DIVISION	BROWARD DIVISION	PALM BEACH DIVISION	TOTAL
7	1,125	0	0	1,125
11	79	0	0	79
12	1	0	0	1
13	1,589	0	0	1,589
15	0	0	0	0
304	4	0	0	4
<b>TOTALS</b>	<b>2,798</b>	<b>0</b>	<b>0</b>	<b>2,798</b>

**LMI PENDING CASE SUMMARY**

CHAPTER	DADE DIVISION	BROWARD DIVISION	PALM BEACH DIVISION	TOTAL
7	1,061	0	0	1,061
11	68	0	0	68
12	1	0	0	1
13	937	0	0	937
15	2	0	0	2
304	0	0	0	0
<b>TOTALS</b>	<b>2,069</b>	<b>0</b>	<b>0</b>	<b>2,069</b>

**PGH PENDING CASE SUMMARY**

CHAPTER	DADE DIVISION	BROWARD DIVISION	PALM BEACH DIVISION	TOTAL
7	0	2	1,911	1,913
11	1	0	103	104
12	0	0	1	1
13	0	0	2,188	2,188
15	0	0	0	0
304	0	0	0	0
<b>TOTALS</b>	<b>1</b>	<b>2</b>	<b>4,203</b>	<b>4,206</b>

**RAM PENDING CASE SUMMARY**

CHAPTER	DADE DIVISION	BROWARD DIVISION	PALM BEACH DIVISION	TOTAL
7	1,119	0	2	1,121
11	44	0	1	45
12	0	0	0	0
13	1,633	0	0	1,633
15	1	0	0	1
304	2	0	0	2
<b>TOTALS</b>	<b>2,799</b>	<b>0</b>	<b>3</b>	<b>2,802</b>

**JKO PENDING CASE SUMMARY**

CHAPTER	DADE DIVISION	BROWARD DIVISION	PALM BEACH DIVISION	TOTAL
7	0	1,091	3	1,094
11	1	76	0	77
12	0	1	0	1
13	0	1,372	0	1,372
15	0	0	0	0
304	0	0	0	0
<b>TOTALS</b>	<b>1</b>	<b>2,540</b>	<b>3</b>	<b>2,544</b>

**RBR PENDING CASE SUMMARY**

CHAPTER	DADE DIVISION	BROWARD DIVISION	PALM BEACH DIVISION	TOTAL
7	2	1,121	2	1,125
11	0	108	0	108
12	0	0	0	0
13	0	1,405	0	1,405
15	0	0	0	0
304	0	0	0	0
<b>TOTALS</b>	<b>2</b>	<b>2,634</b>	<b>2</b>	<b>2,638</b>

**EPK PENDING CASE SUMMARY**

CHAPTER	DADE DIVISION	BROWARD DIVISION	PALM BEACH DIVISION	TOTAL
7	0	0	2	2
11	0	0	0	0
12	0	0	0	0
13	0	0	0	0
15	0	0	0	0
304	0	0	0	0
<b>TOTALS</b>	<b>0</b>	<b>0</b>	<b>2</b>	<b>2</b>

<b>DISTRICT TOTALS</b>	<b>7,670</b>	<b>5,176</b>	<b>4,213</b>	<b>17,059</b>
------------------------	--------------	--------------	--------------	---------------



CASE FILING SUMMARY BY COUNTY

DADE COUNTY - 12025

	7	11	12	13	15 TOTAL
AJC	202	4	0	60	0
PGH	0	0	0	0	0
LMI	196	18	0	56	0
RAM	199	1	0	57	0
JKO	0	0	0	0	0
RBR	0	0	0	0	0
EPK					
<b>Sub-Total</b>	<b>597</b>	<b>23</b>	<b>0</b>	<b>173</b>	<b>0</b>

MONROE COUNTY - 12087

	7	11	12	13	15 TOTAL
AJC	4	0	0	0	0
PGH	0	0	0	0	0
LMI	4	0	0	1	0
RAM	5	0	0	1	0
JKO	0	0	0	0	0
RBR	0	0	0	0	0
EPK					
<b>Sub-Total</b>	<b>13</b>	<b>0</b>	<b>0</b>	<b>2</b>	<b>0</b>

Division Total **808**

BROWARD COUNTY - 12011

	7	11	12	13	15 TOTAL
AJC	0	0	0	0	0
PGH	0	0	0	0	0
LMI	0	0	0	0	0
RAM	0	0	0	0	0
JKO	168	3	1	80	0
RBR	171	2	0	81	0
EPK					
<b>Sub-Total</b>	<b>339</b>	<b>5</b>	<b>1</b>	<b>161</b>	<b>0</b>

Division Total **506**

HIGHLANDS COUNTY - 12055

	7	11	12	13	15 TOTAL
AJC	0	0	0	0	0
PGH	9	0	0	7	0
LMI	0	0	0	0	0
RAM	0	0	0	0	0
JKO	0	0	0	0	0
RBR	0	0	0	0	0
EPK					
<b>Sub-Total</b>	<b>9</b>	<b>0</b>	<b>0</b>	<b>7</b>	<b>0</b>

INDIAN RIVER COUNTY - 12061

	7	11	12	13	15 TOTAL
AJC	0	0	0	0	0
PGH	29	0	0	3	0
LMI	0	0	0	0	0
RAM	0	0	0	0	0
JKO	0	0	0	0	0
RBR	0	0	0	0	0
EPK					
<b>Sub-Total</b>	<b>29</b>	<b>0</b>	<b>0</b>	<b>3</b>	<b>0</b>

MARTIN COUNTY - 12085

	7	11	12	13	15 TOTAL
AJC	0	0	0	0	0
PGH	28	0	0	5	0
LMI	0	0	0	0	0
RAM	0	0	0	0	0
JKO	0	0	0	0	0
RBR	0	0	0	0	0
EPK					
<b>Sub-Total</b>	<b>28</b>	<b>0</b>	<b>0</b>	<b>5</b>	<b>0</b>

OKEECHOBEE COUNTY - 12093

	7	11	12	13	15 TOTAL
AJC	0	0	0	0	0
PGH	7	0	0	3	0
LMI	0	0	0	0	0
RAM	0	0	0	0	0
JKO	0	0	0	0	0
RBR	0	0	0	0	0
EPK					
<b>Sub-Total</b>	<b>7</b>	<b>0</b>	<b>0</b>	<b>3</b>	<b>0</b>

PALM BEACH COUNTY - 12099

	7	11	12	13	15 TOTAL
AJC	0	0	0	0	0
PGH	182	1	0	72	0
LMI	0	0	0	0	0
RAM	0	0	0	0	0
JKO	0	0	0	0	0
RBR	0	0	0	0	0
EPK					
<b>Sub-Total</b>	<b>182</b>	<b>1</b>	<b>0</b>	<b>72</b>	<b>0</b>

ST. LUCIE - 12111

	7	11	12	13	15 TOTAL
AJC	0	0	0	0	0
PGH	83	0	0	25	0
LMI	0	0	0	0	0
RAM	0	0	0	0	0
JKO	0	0	0	0	0
RBR	0	0	0	0	0
EPK					
<b>Sub-Total</b>	<b>83</b>	<b>0</b>	<b>0</b>	<b>25</b>	<b>0</b>

Division Total **454**

<b>GRAND TOTAL</b>	<b>1287</b>	<b>29</b>	<b>1</b>	<b>451</b>	<b>0</b>	<b>1768</b>
--------------------	-------------	-----------	----------	------------	----------	-------------

**JUNE 2008**  
**CASE FILING SUMMARY BY NATURE OF DEBTOR/DIVISION**

CHAPTER	BUSINESS				CONSUMER				TOTAL
	DADE	BROWARD	PALM BCH	DIV. TOTAL	DADE	BROWARD	PALM BCH	DIV. TOTAL	
7	42	28	32	102	569	310	307	1186	1288
11	22	5	1	28	0	0	1	1	29
12	0	1	0	1	0	0	0	0	1
13	2	1	2	5	173	161	111	445	450
15	0	0	0	0	0	0	0	0	0
<b>TOTAL</b>	<b>66</b>	<b>35</b>	<b>35</b>	<b>136</b>	<b>742</b>	<b>471</b>	<b>419</b>	<b>1632</b>	<b>1768</b>

**DIVISIONAL BUSINESS CASE FILING SUMMARY**

**DADE DIVISION**

CHAPTER	AJC	PGH	LMI	RAM	JKO	RBR	EPK	TOTAL
7	14	0	16	12	0	0	0	42
11	4	0	18	0	0	0	0	22
12	0	0	0	0	0	0	0	0
13	0	0	1	1	0	0	0	2
15	0	0	0	0	0	0	0	0
<b>Sub-Total</b>	<b>18</b>	<b>0</b>	<b>35</b>	<b>13</b>	<b>0</b>	<b>0</b>	<b>0</b>	<b>66</b>

**BROWARD DIVISION**

CHAPTER	AJC	PGH	LMI	RAM	JKO	RBR	EPK	TOTAL
7	0	0	0	0	16	12	0	28
11	0	0	0	0	3	2	0	5
12	0	0	0	0	1	0	0	1
13	0	0	0	0	0	1	0	1
15	0	0	0	0	0	0	0	0
<b>Sub-Total</b>	<b>0</b>	<b>0</b>	<b>0</b>	<b>0</b>	<b>20</b>	<b>15</b>	<b>0</b>	<b>35</b>

**PALM BEACH DIVISION**

CHAPTER	AJC	PGH	LMI	RAM	JKO	RBR	EPK	TOTAL
7	0	32	0	0	0	0	0	32
11	0	1	0	0	0	0	0	1
12	0	0	0	0	0	0	0	0
13	0	2	0	0	0	0	0	2
15	0	0	0	0	0	0	0	0
<b>Sub-Total</b>	<b>0</b>	<b>35</b>	<b>0</b>	<b>0</b>	<b>0</b>	<b>0</b>	<b>0</b>	<b>35</b>
<b>GRAND TOTAL</b>	<b>18</b>	<b>35</b>	<b>35</b>	<b>13</b>	<b>20</b>	<b>15</b>	<b>0</b>	<b>136</b>

**DIVISIONAL CONSUMER CASE FILING SUMMARY**

**DADE DIVISION**

CHAPTER	AJC	PGH	LMI	RAM	JKO	RBR	EPK	TOTAL
7	192	0	184	192	1	0	0	569
11	0	0	0	0	0	0	0	0
12	0	0	0	0	0	0	0	0
13	60	0	56	57	0	0	0	173
15	0	0	0	0	0	0	0	0
<b>Sub-Total</b>	<b>252</b>	<b>0</b>	<b>240</b>	<b>249</b>	<b>1</b>	<b>0</b>	<b>0</b>	<b>742</b>

**BROWARD DIVISION**

CHAPTER	AJC	PGH	LMI	RAM	JKO	RBR	EPK	TOTAL
7	0	0	0	0	151	159	0	310
11	0	0	0	0	0	0	0	0
12	0	0	0	0	0	0	0	0
13	0	0	0	0	80	81	0	161
15	0	0	0	0	0	0	0	0
<b>Sub-Total</b>	<b>0</b>	<b>0</b>	<b>0</b>	<b>0</b>	<b>231</b>	<b>240</b>	<b>0</b>	<b>471</b>

**PALM BEACH DIVISION**

CHAPTER	AJC	PGH	LMI	RAM	JKO	RBR	EPK	TOTAL
7	0	307	0	0	0	0	0	307
11	0	1	0	0	0	0	0	1
12	0	0	0	0	0	0	0	0
13	0	111	0	0	0	0	0	111
15	0	0	0	0	0	0	0	0
<b>Sub-Total</b>	<b>0</b>	<b>419</b>	<b>0</b>	<b>0</b>	<b>0</b>	<b>0</b>	<b>0</b>	<b>419</b>
<b>GRAND TOTAL</b>	<b>252</b>	<b>419</b>	<b>240</b>	<b>249</b>	<b>232</b>	<b>240</b>	<b>0</b>	<b>1,632</b>

CASE FILING SUMMARY BY COUNTY / CONSUMER - BUSINESS

CONSUMERS

DADE COUNTY - 12025

	7	11	12	13	15	TOTAL
AJC	188	0	0	60	0	248
PGH	0	0	0	0	0	0
LMI	180	0	0	55	0	235
RAM	187	1	0	56	0	244
JKO	0	0	0	0	0	0
RBR	0	0	0	0	0	0
EPK						
<b>Sub-Total</b>	<b>555</b>	<b>1</b>	<b>0</b>	<b>171</b>	<b>0</b>	<b>727</b>

MONROE COUNTY - 12087

	7	11	12	13	15	TOTAL
AJC	4	0	0	0	0	4
PGH	0	0	0	0	0	0
LMI	4	0	0	1	0	5
RAM	5	0	0	1	0	6
JKO	0	0	0	0	0	0
RBR	0	0	0	0	0	0
EPK						
<b>Sub-Total</b>	<b>13</b>	<b>0</b>	<b>0</b>	<b>2</b>	<b>0</b>	<b>15</b>
						<b>Division Total</b>
						<b>742</b>

BROWARD COUNTY - 12011

	7	11	12	13	15	TOTAL
AJC	0	0	0	0	0	0
PGH	0	0	0	0	0	0
LMI	0	0	0	0	0	0
RAM	0	0	0	0	0	0
JKO	152	0	0	80	0	232
RBR	159	0	0	80	0	239
EPK						
<b>Sub-Total</b>	<b>311</b>	<b>0</b>	<b>0</b>	<b>160</b>	<b>0</b>	<b>471</b>
						<b>Division Total</b>
						<b>471</b>

HIGHLANDS COUNTY - 12055

	7	11	12	13	15	TOTAL
AJC	0	0	0	0	0	0
PGH	9	0	0	6	0	15
LMI	0	0	0	0	0	0
RAM	0	0	0	0	0	0
JKO	0	0	0	0	0	0
RBR	0	0	0	0	0	0
EPK						
<b>Sub-Total</b>	<b>9</b>	<b>0</b>	<b>0</b>	<b>6</b>	<b>0</b>	<b>15</b>

INDIAN RIVER COUNTY - 12061

	7	11	12	13	15	TOTAL
AJC	0	0	0	0	0	0
PGH	27	0	0	3	0	30
LMI	0	0	0	0	0	0
RAM	0	0	0	0	0	0
JKO	0	0	0	0	0	0
RBR	0	0	0	0	0	0
EPK						
<b>Sub-Total</b>	<b>27</b>	<b>0</b>	<b>0</b>	<b>3</b>	<b>0</b>	<b>30</b>

MARTIN COUNTY - 12085

	7	11	12	13	15	TOTAL
AJC	0	0	0	0	0	0
PGH	25	0	0	4	0	29
LMI	0	0	0	0	0	0
RAM	0	0	0	0	0	0
JKO	0	0	0	0	0	0
RBR	0	0	0	0	0	0
EPK						
<b>Sub-Total</b>	<b>25</b>	<b>0</b>	<b>0</b>	<b>4</b>	<b>0</b>	<b>29</b>

OKEECHOBEE COUNTY - 12093

	7	11	12	13	15	TOTAL
AJC	0	0	0	0	0	0
PGH	7	0	0	3	0	10
LMI	0	0	0	0	0	0
RAM	0	0	0	0	0	0
JKO	0	0	0	0	0	0
RBR	0	0	0	0	0	0
EPK						
<b>Sub-Total</b>	<b>7</b>	<b>0</b>	<b>0</b>	<b>3</b>	<b>0</b>	<b>10</b>

PALM BEACH COUNTY - 12099

	7	11	12	13	15	TOTAL
AJC	0	0	0	0	0	0
PGH	161	0	0	72	0	233
LMI	0	0	0	0	0	0
RAM	0	0	0	0	0	0
JKO	0	0	0	0	0	0
RBR	0	0	0	0	0	0
EPK						
<b>Sub-Total</b>	<b>161</b>	<b>0</b>	<b>0</b>	<b>72</b>	<b>0</b>	<b>233</b>

ST. LUCIE - 12111

	7	11	12	13	15	TOTAL
AJC	0	0	0	0	0	0
PGH	78	0	0	24	0	102
LMI	0	0	0	0	0	0
RAM	0	0	0	0	0	0
JKO	0	0	0	0	0	0
RBR	0	0	0	0	0	0
EPK						
<b>Sub-Total</b>	<b>78</b>	<b>0</b>	<b>0</b>	<b>24</b>	<b>0</b>	<b>102</b>
						<b>Division Total</b>
						<b>419</b>

<b>GRAND TOTAL</b>	<b>1186</b>	<b>1</b>	<b>0</b>	<b>445</b>	<b>0</b>	<b>1632</b>
--------------------	-------------	----------	----------	------------	----------	-------------

CASE FILING SUMMARY BY COUNTY / CONSUMER - BUSINESS

BUSINESS

DADE COUNTY - 12025

	7	11	12	13	15	TOTAL
AJC	14	4	0	0	0	18
PGH	0	0	0	0	0	0
LMI	16	18	0	1	0	35
RAM	12	0	0	1	0	13
JKO	0	0	0	0	0	0
RBR	0	0	0	0	0	0
EPK						
<b>Sub-Total</b>	<b>42</b>	<b>22</b>	<b>0</b>	<b>2</b>	<b>0</b>	<b>66</b>

MONROE COUNTY - 12087

	7	11	12	13	15	TOTAL
AJC	0	0	0	0	0	0
PGH	0	0	0	0	0	0
LMI	0	0	0	0	0	0
RAM	0	0	0	0	0	0
JKO	0	0	0	0	0	0
RBR	0	0	0	0	0	0
EPK						
<b>Sub-Total</b>	<b>0</b>	<b>0</b>	<b>0</b>	<b>0</b>	<b>0</b>	<b>0</b>

Division Total 66

BROWARD COUNTY - 12011

	7	11	12	13	15	TOTAL
AJC	0	0	0	0	0	0
PGH	0	0	0	0	0	0
LMI	0	0	0	0	0	0
RAM	0	0	0	0	0	0
JKO	16	3	1	0	0	20
RBR	12	2	0	1	0	15
EPK						
<b>Sub-Total</b>	<b>28</b>	<b>5</b>	<b>1</b>	<b>1</b>	<b>0</b>	<b>35</b>

Division Total 35

HIGHLANDS COUNTY - 12055

	7	11	12	13	15	TOTAL
AJC	0	0	0	0	0	0
PGH	0	0	0	1	0	1
LMI	0	0	0	0	0	0
RAM	0	0	0	0	0	0
JKO	0	0	0	0	0	0
RBR	0	0	0	0	0	0
EPK						
<b>Sub-Total</b>	<b>0</b>	<b>0</b>	<b>0</b>	<b>1</b>	<b>0</b>	<b>1</b>

INDIAN RIVER COUNTY - 12061

	7	11	12	13	15	TOTAL
AJC	0	0	0	0	0	0
PGH	2	0	0	0	0	2
LMI	0	0	0	0	0	0
RAM	0	0	0	0	0	0
JKO	0	0	0	0	0	0
RBR	0	0	0	0	0	0
EPK						
<b>Sub-Total</b>	<b>2</b>	<b>0</b>	<b>0</b>	<b>0</b>	<b>0</b>	<b>2</b>

MARTIN COUNTY - 12085

	7	11	12	13	15	TOTAL
AJC	0	0	0	0	0	0
PGH	3	0	0	1	0	4
LMI	0	0	0	0	0	0
RAM	0	0	0	0	0	0
JKO	0	0	0	0	0	0
RBR	0	0	0	0	0	0
EPK						
<b>Sub-Total</b>	<b>3</b>	<b>0</b>	<b>0</b>	<b>1</b>	<b>0</b>	<b>4</b>

OKEECHOBEE COUNTY - 12093

	7	11	12	13	15	TOTAL
AJC	0	0	0	0	0	0
PGH	0	0	0	0	0	0
LMI	0	0	0	0	0	0
RAM	0	0	0	0	0	0
JKO	0	0	0	0	0	0
RBR	0	0	0	0	0	0
EPK						
<b>Sub-Total</b>	<b>0</b>	<b>0</b>	<b>0</b>	<b>0</b>	<b>0</b>	<b>0</b>

PALM BEACH COUNTY - 12099

	7	11	12	13	15	TOTAL
AJC	0	0	0	0	0	0
PGH	21	1	0	0	0	22
LMI	0	0	0	0	0	0
RAM	0	0	0	0	0	0
JKO	0	0	0	0	0	0
RBR	0	0	0	0	0	0
EPK						
<b>Sub-Total</b>	<b>21</b>	<b>1</b>	<b>0</b>	<b>0</b>	<b>0</b>	<b>22</b>

ST. LUCIE - 12111

	7	11	12	13	15	TOTAL
AJC	0	0	0	0	0	0
PGH	5	0	0	1	0	6
LMI	0	0	0	0	0	0
RAM	0	0	0	0	0	0
JKO	0	0	0	0	0	0
RBR	0	0	0	0	0	0
EPK						
<b>Sub-Total</b>	<b>5</b>	<b>0</b>	<b>0</b>	<b>1</b>	<b>0</b>	<b>6</b>

Division Total 35

<b>GRAND TOTAL</b>	<b>101</b>	<b>28</b>	<b>1</b>	<b>6</b>	<b>0</b>	<b>136</b>
--------------------	------------	-----------	----------	----------	----------	------------

2008 COMPARISON OF BANKRUPTCY FILINGS

AJC	CH 7	CH 11	CH 12	CH 13	CH 15	TOTAL
JAN	118	10	0	39	0	167
FEB	140	1	0	43	0	184
MAR	165	3	0	47	0	215
APR	171	2	0	52	0	225
MAY	174	4	0	56	0	234
JUN	206	4	0	60	0	270
JUL	0	0	0	0	0	0
AUG	0	0	0	0	0	0
SEP	0	0	0	0	0	0
OCT	0	0	0	0	0	0
NOV	0	0	0	0	0	0
DEC	0	0	0	0	0	0
<b>TOTALS</b>	<b>974</b>	<b>24</b>	<b>0</b>	<b>297</b>	<b>0</b>	<b>1295</b>

PGH	CH 7	CH 11	CH 12	CH 13	CH 15	TOTAL
JAN	198	11	0	95	0	304
FEB	234	3	0	92	0	329
MAR	288	3	0	109	0	400
APR	291	1	0	95	0	387
MAY	336	5	0	107	0	448
JUN	339	2	0	113	0	454
JUL	0	0	0	0	0	0
AUG	0	0	0	0	0	0
SEP	0	0	0	0	0	0
OCT	0	0	0	0	0	0
NOV	0	0	0	0	0	0
DEC	0	0	0	0	0	0
<b>TOTALS</b>	<b>1686</b>	<b>25</b>	<b>0</b>	<b>611</b>	<b>0</b>	<b>2322</b>

LMI	CH 7	CH 11	CH 12	CH 13	CH 15	TOTAL
JAN	121	1	0	41	1	164
FEB	141	3	1	41	0	186
MAR	163	1	0	48	0	212
APR	175	2	0	53	0	230
MAY	173	6	0	56	0	235
JUN	200	18	0	57	0	275
JUL	0	0	0	0	0	0
AUG	0	0	0	0	0	0
SEP	0	0	0	0	0	0
OCT	0	0	0	0	0	0
NOV	0	0	0	0	0	0
DEC	0	0	0	0	0	0
<b>TOTALS</b>	<b>973</b>	<b>31</b>	<b>1</b>	<b>296</b>	<b>1</b>	<b>1302</b>

RAM	CH 7	CH 11	CH 12	CH 13	CH 15	TOTAL
JAN	122	2	0	42	0	166
FEB	136	4	0	40	0	180
MAR	163	0	0	50	0	213
APR	172	3	0	51	0	226
MAY	174	4	0	56	0	234
JUN	203	0	0	59	0	262
JUL	0	0	0	0	0	0
AUG	0	0	0	0	0	0
SEP	0	0	0	0	0	0
OCT	0	0	0	0	0	0
NOV	0	0	0	0	0	0
DEC	0	0	0	0	0	0
<b>TOTALS</b>	<b>970</b>	<b>13</b>	<b>0</b>	<b>298</b>	<b>0</b>	<b>1281</b>

JKO	CH 7	CH 11	CH 12	CH 13	CH 15	TOTAL
JAN	108	40	0	60	0	208
FEB	129	0	0	68	0	197
MAR	162	2	0	72	0	236
APR	173	5	0	87	0	265
MAY	206	2	0	87	0	295
JUN	168	3	1	80	0	252
JUL	0	0	0	0	0	0
AUG	0	0	0	0	0	0
SEP	0	0	0	0	0	0
OCT	0	0	0	0	0	0
NOV	0	0	0	0	0	0
DEC	0	0	0	0	0	0
<b>TOTALS</b>	<b>946</b>	<b>52</b>	<b>1</b>	<b>454</b>	<b>0</b>	<b>1453</b>

RBR	CH 7	CH 11	CH 12	CH 13	CH 15	TOTAL
JAN	109	29	0	60	0	198
FEB	129	3	0	62	0	194
MAR	157	3	0	72	0	232
APR	176	3	0	88	0	267
MAY	201	2	0	82	0	285
JUN	171	2	0	82	0	255
JUL	0	0	0	0	0	0
AUG	0	0	0	0	0	0
SEP	0	0	0	0	0	0
OCT	0	0	0	0	0	0
NOV	0	0	0	0	0	0
DEC	0	0	0	0	0	0
<b>TOTALS</b>	<b>943</b>	<b>42</b>	<b>0</b>	<b>446</b>	<b>0</b>	<b>1431</b>

EPK	CH 7	CH 11	CH 12	CH 13	CH 15	TOTAL
JAN	0	0	0	0	0	0
FEB	0	0	0	0	0	0
MAR	0	0	0	0	0	0
APR	1	0	0	0	0	1
MAY	1	0	0	0	0	1
JUN	0	0	0	0	0	0
JUL	0	0	0	0	0	0
AUG	0	0	0	0	0	0
SEP	0	0	0	0	0	0
OCT	0	0	0	0	0	0
NOV	0	0	0	0	0	0
DEC	0	0	0	0	0	0
<b>TOTALS</b>	<b>2</b>	<b>0</b>	<b>0</b>	<b>0</b>	<b>0</b>	<b>2</b>

2008 YEAR-TO-DATE COMPARISON OF BANKRUPTCY CASE FILINGS  
BY JUDGE

	AJC	PGH	LMI	RAM	JKO	RBR	EPK	TOTAL
JAN	167	304	164	166	208	198	0	1207
FEB	184	329	186	180	197	194	0	1270
MAR	215	400	212	213	236	232	0	1508
APR	225	387	230	226	265	267	1	1601
MAY	234	448	235	234	295	285	1	1732
JUN	270	454	275	262	252	255	0	1768
JUL	0	0	0	0	0	0	0	0
AUG	0	0	0	0	0	0	0	0
SEP	0	0	0	0	0	0	0	0
OCT	0	0	0	0	0	0	0	0
NOV	0	0	0	0	0	0	0	0
DEC	0	0	0	0	0	0	0	0
<b>TOTALS</b>	<b>1295</b>	<b>2322</b>	<b>1302</b>	<b>1281</b>	<b>1453</b>	<b>1431</b>	<b>2</b>	<b>9086</b>
<b>% of Total</b>	<b>14.25</b>	<b>25.56</b>	<b>14.33</b>	<b>14.10</b>	<b>15.99</b>	<b>15.75</b>	<b>0.02</b>	

2008 YEAR-TO-DATE COMPARISON OF BANKRUPTCY CASE FILINGS  
BY JUDGE/CHAPTER

	CH 7	CH 11	CH 12	CH 13	CH 15	TOTAL
AJC	974	24	0	297	0	1295
PGH	1686	25	0	611	0	2322
LMI	973	31	1	296	1	1302
RAM	970	13	0	298	0	1281
JKO	946	52	1	454	0	1453
RBR	943	42	0	446	0	1431
EPK	2	0	0	0	0	2
<b>TOTALS</b>	<b>6494</b>	<b>187</b>	<b>2</b>	<b>2402</b>	<b>1</b>	<b>9086</b>

### CALENDAR YEAR-TO-DATE COMPARISON

	ENDING JUN 08	ENDING JUN 07	PERCENT CHANGE
Bankruptcy Case Filings	9,086	5,156	76.22
Bankruptcy Case Closings	8,297	6,887	20.47
Adversary Filings	420	519	-19.08
Adversary Closings	524	525	-0.19

### 12-MONTH/THREE YEAR COMPARISON

	ENDING JUN 08	ENDING JUN 07	ENDING JUN 06	% CHANGE 2008 / 2007	% CHANGE 2008 / 2006
Bankruptcy Case Filings	15,685	9,161	24,664	71.21	-36.41
Bankruptcy Case Closings	15,488	14,378	34,009	7.72	-54.46
Adversary Filings	802	1,023	1,533	-21.60	-47.68
Adversary Closings	996	1,107	1,368	-10.03	-27.19

### MONTHLY COMPARISON

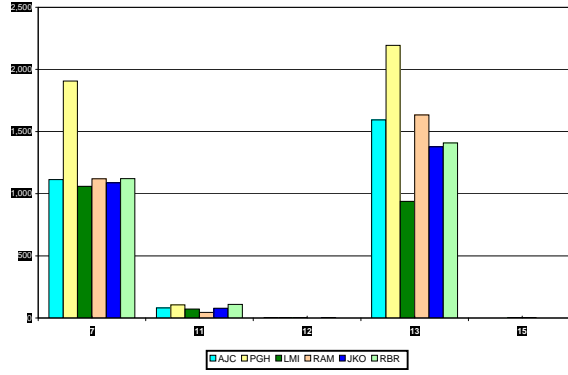
	JUN 08	JUN 07	PERCENT CHANGE
Bankruptcy Case Filings	1,768	948	86.50
Bankruptcy Case Closings	1,480	1,212	22.11
Adversary Filings	59	80	-26.25
Adversary Closings	67	58	15.52

*Filings and Closings for Dade Division includes Monroe County*

*Filings and Closings for Palm Beach Division includes Indian River, Highlands, Martin,*

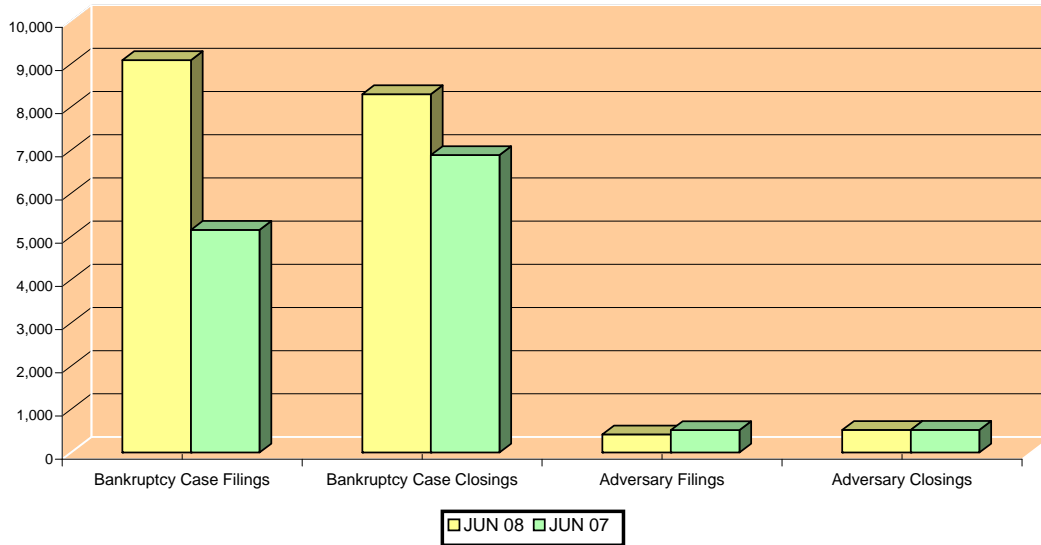
*St. Lucie & Okeechobee Counties*

TOTAL PENDING CASELOAD BY JUDGE/CHAPTER





CALENDAR YEAR-TO-DATE COMPARISON



12-MONTH/THREE YEAR COMPARISON

