

UNITED STATES BANKRUPTCY COURT

SOUTHERN DISTRICT OF FLORIDA

*51 S.W. 1st Avenue
Room 1401
Miami, FL 33130*

*Karen Eddy
Clerk of Court*



MONTHLY STATISTICAL REPORT

MAY 2005

MONTHLY STATISTICAL REPORT

TABLE OF CONTENTS

	<i>page</i>
<i>I. MONTHLY SARD SUMMARY REPORT</i>	<i>2</i>
<i>II. BK CASE FILINGS SUMMARY REPORT</i>	<i>3</i>
<i>III. BK CASE CLOSINGS SUMMARY REPORT</i>	<i>4</i>
<i>IV. AP CASE FILINGS SUMMARY REPORT</i>	<i>5</i>
<i>V. AP CASE CLOSINGS SUMMARY REPORT</i>	<i>6</i>
<i>VI. BK PRO SE CASES FILING SUMMARY REPORT</i>	<i>7</i>
<i>VII. PENDING CASELOAD REPORT BY JUDGE/CHAPTER</i>	<i>8</i>
<i>VIII. DIVISIONAL CASELOAD REPORT</i>	<i>9</i>
<i>IX. CASE FILING BREAKDOWN BY COUNTY</i>	<i>10</i>
<i>X. BREAKDOWN BY NATURE OF DEBTOR</i>	<i>11</i>
<i>XI. BREAKDOWN BY COUNTY / NATURE - CONSUMER</i>	<i>12</i>
<i>XII. BREAKDOWN BY COUNTY / NATURE - BUSINESS</i>	<i>13</i>
<i>XIII. SUMMARIES AND GRAPHS</i>	<i>14 - 18</i>

MAY 2005
MONTHLY SARD REPORT SUMMARY

I. BC101 REPORT OF BANKRUPTCY CASES

	AJC	SHF	PGH	RAM	RBR	TOTAL
Pending Prior Month	6,877	4,626	3,911	6,936	5,503	27,853
Cases Filed	687	515	419	687	492	2,800
Reopened	19	11	11	3	10	54
Split Cases	0	2	0	0	0	2
Trans. In	1	0	0	0	1	2
Reassigned To	0	2	0	2	0	4
Trans. Out	0	0	0	0	0	0
Reassigned From	1	0	2	1	0	4
Cases Closed	441	303	273	466	303	1,786
Cases Pending	7,142	4,853	4,066	7,161	5,703	28,925

II. BC109 REPORT OF ADVERSARY CASES

	AJC	SHF	PGH	RAM	RBR	TOTAL
Pending Prior Month	156	124	152	134	81	647
Cases Filed	7	15	11	19	15	67
Trans. In	0	0	0	0	0	0
Reassigned To	0	0	0	0	0	0
Cases Reopened	1	1	0	1	1	4
Cases Closed	26	15	6	16	13	76
Reassigned From	0	0	0	0	0	0
Cases Pending	138	125	157	138	84	642

IV. MONTHLY REPORT OF TRIALS AND OTHER ACTIVITY

	Contested Proceedings	Miscellaneous Proceedings	Total Hours in Court
AJC	0	33	33
SHF	9	35	44
PGH	4	22	26
RAM	6	38	44
RBR	5	27	32
Total	24	155	179

UNITED STATES BANKRUPTCY COURT
Southern District of Florida

CASE FILINGS SUMMARY REPORT
For Cases Filed from 05/01/2005 to 05/31/2005
Run Date: 06/02/05

Run Time 11:21

Divisional Breakdown

	Dade					Broward					Palm Beach					
	Ch	7	11	12	13	304	7	11	12	13	304	7	11	12	13	304
AJC	615		3	0	68	1	0	0	0	0	0	0	0	0	0	0
SHF	0		0	0	0	0	0	0	0	0	437	3	0	75	0	
PGH	0		0	0	0	290	2	0	53	0	71	3	0	0	0	
RAM	618		3	0	65	1	0	0	0	0	0	0	0	0	0	
RBR	0		0	0	36	0	402	3	0	51	0	0	0	0	0	

Tot	1233		6	0	169	2	692	5	0	104	0	508	6	0	75	0
Divisional Totals					1410					801					589	

Totals By Judge

	Chapter 7	Section 304	Chapter 11	Chapter 12	Chapter 13	Totals
AJC	615	1	3	0	68	687
SHF	437	0	3	0	75	515
PGH	361	0	5	0	53	419
RAM	618	1	3	0	65	687
RBR	402	0	3	0	87	492

Totals	2433	2	17	0	348	

Grand Total: 2800

+4 = 2804

"TOTAL DOES NOT INCLUDE SPLIT, TRANSFERRED IN CASES AND INTRA-DISTRICT CASES FILED PRIOR TO THIS MONTH"

2

2

UNITED STATES BANKRUPTCY COURT
Southern District of Florida

CASE CLOSING SUMMARY REPORT
For Cases Closed from 05/01/2005 to 05/31/2005
Run Date: 06/02/05

Run Time 14:25

Divisional Breakdown

Ch	Dade					Broward					Palm Beach					
	7	11	12	13	304	7	11	12	13	304	7	11	12	13	304	
AJC	312	8	0	121	0	0	0	0	0	0	0	0	0	0	0	
SHF	0	0	0	0	0	2	0	0	0	0	237	1	0	60	3	
PGH	0	0	0	0	0	124	1	0	48	0	99	1	0	0	0	
RAM	310	1	0	155	0	0	0	0	0	0	0	0	0	0	0	
RBR	3	0	0	55	0	210	4	0	31	0	0	0	0	0	0	

Tot	625	9	0	331	0	336	5	0	79	0	336	2	0	60	3	
Divisional Totals				965					420					401		

Totals By Judge

	Chapter 7	Section 304	Chapter 11	Chapter 12	Chapter 13	Totals	
AJC	312	0	8	0	121	441	
SHF	239	3	1	0	60	303	
PGH	223	0	2	0	48	273	
RAM	310	0	1	0	155	466	
RBR	213	0	4	0	86	303	

Totals	1297	3	16	0	470		
Grand Total:	1786						

UNITED STATES BANKRUPTCY COURT
Southern District of FloridaAdversary Proceedings Case Filing Report
For Cases Filed from 05/01/2005 to 05/31/2005
Run Time 11:18

Run Date: 06/02/05

Divisional Breakdown

	Dade	Broward	Palm Beach	Totals
AJC	7	0	0	7
SHF	0	0	15	15
PGH	0	3	8	11
RAM	19	0	0	19
RBR	1	14	0	15

Totals	27	17	23	67

UNITED STATES BANKRUPTCY COURT
Southern District of FloridaAdversary Proceedings Case Closing Report
For Cases Closed from 05/01/2005 to 05/31/2005
Run Time 11:35

Run Date: 06/02/05

Divisional Breakdown

	Dade	Broward	Palm Beach	Totals
AJC	26	0	0	26
SHF	0	0	15	15
PGH	0	1	5	6
RAM	16	0	0	16
RBR	0	13	0	13

Totals	42	14	20	76

UNITED STATES BANKRUPTCY COURT
SOUTHERN DISTRICT OF FLORIDA

BANKRUPTCY PRO SE CASES FILING SUMMARY REPORT
For Cases Filed from 05/01/2005 to 05/31/2005

Run Date: 06/02/05

Run Time 15:17

Divisional Breakdown

Ch	Dade					Broward					Palm Beach				
	7	11	12	13	304	7	11	12	13	304	7	11	12	13	304
AJC	24	0	0	6	0	0	0	0	0	0	0	0	0	0	0
SHF	0	0	0	0	0	0	0	0	0	0	72	0	0	4	0
PGH	0	0	0	0	0	56	0	0	5	0	7	0	0	0	0
RAM	15	0	0	10	0	0	0	0	0	0	0	0	0	0	0
RBR	0	0	0	6	0	85	1	0	7	0	0	0	0	0	0

Tot	39	0	0	22	0	141	1	0	12	0	79	0	0	4	0
Divisional Totals					61					154					83

Totals By Judge

	Chapter 7	Section 304	Chapter 11	Chapter 12	Chapter 13	Totals
AJC	24	0	0	0	6	30
SHF	72	0	0	0	4	76
PGH	63	0	0	0	5	68
RAM	15	0	0	0	10	25
RBR	85	0	1	0	13	99

Totals	259	0	1	0	38	298
Grand Total:	298					

PENDING CASELOAD REPORTS BY JUDGE/CHAPTER
MAY 2005

AJC	7	11	12	13	304	ACT	TOTALS
Pending Prior Month	2,298	79	1	4,497	2	0	6,877
Cases Filed	615	3	0	68	1	0	687
Reopened	15	0	0	4	0	0	19
Split Cases	0	0	0	0	0	0	0
Transferred In	0	0	0	1	0	0	1
Reassigned To	0	0	0	0	0	0	0
Converted To	11	0	0	1	0	0	12
Transferred Out	0	0	0	0	0	0	0
Reassigned From	1	0	0	0	0	0	1
Converted From	1	0	0	11	0	0	12
Cases Closed	312	8	0	121	0	0	441
Total Pending	2,625	74	1	4,439	3	0	7,142

SHF	7	11	12	13	304	ACT	TOTALS
Pending Prior Month	2,012	25	0	2,584	5	0	4,626
Cases Filed	437	3	0	75	0	0	515
Reopened	9	0	0	2	0	0	11
Split Cases	1	0	0	1	0	0	2
Transferred In	0	0	0	0	0	0	0
Reassigned To	0	0	0	2	0	0	2
Converted To	7	0	0	8	0	0	15
Transferred Out	0	0	0	0	0	0	0
Reassigned From	0	0	0	0	0	0	0
Converted From	8	0	0	7	0	0	15
Cases Closed	239	1	0	60	3	0	303
Total Pending	2,219	27	0	2,605	2	0	4,853

PGH	7	11	12	13	304	ACT	TOTALS
Pending Prior Month	1,959	148	0	1,803	1	0	3,911
Cases Filed	361	5	0	53	0	0	419
Reopened	7	0	0	4	0	0	11
Split Cases	0	0	0	0	0	0	0
Transferred In	0	0	0	0	0	0	0
Reassigned To	0	0	0	0	0	0	0
Converted To	5	0	0	3	0	0	8
Transferred Out	0	0	0	0	0	0	0
Reassigned From	0	0	0	2	0	0	2
Converted From	2	2	0	4	0	0	8
Cases Closed	223	2	0	48	0	0	273
Total Pending	2,107	149	0	1,809	1	0	4,066

RAM	7	11	12	13	304	ACT	TOTALS
Pending Prior Month	2,252	73	0	4,608	3	0	6,936
Cases Filed	618	3	0	65	1	0	687
Reopened	3	0	0	0	0	0	3
Split Cases	0	0	0	0	0	0	0
Transferred In	0	0	0	0	0	0	0
Reassigned To	1	0	0	1	0	0	2
Converted To	7	0	0	5	0	0	12
Transferred Out	0	0	0	0	0	0	0
Reassigned From	0	0	0	1	0	0	1
Converted From	5	0	0	7	0	0	12
Cases Closed	310	1	0	155	0	0	466
Total Pending	2,566	75	0	4,516	4	0	7,161

RBR	7	11	12	13	304	ACT	TOTALS
Pending Prior Month	1,913	58	0	3,532	0	0	5,503
Cases Filed	402	3	0	87	0	0	492
Reopened	5	0	0	5	0	0	10
Split Cases	0	0	0	0	0	0	0
Transferred In	0	0	0	1	0	0	1
Reassigned To	0	0	0	0	0	0	0
Converted To	8	0	0	4	0	0	12
Transferred Out	0	0	0	0	0	0	0
Reassigned From	0	0	0	0	0	0	0
Converted From	4	0	0	8	0	0	12
Cases Closed	213	4	0	86	0	0	303
Total Pending	2,111	57	0	3,535	0	0	5,703

GRAND TOTAL:	11,628	382	1	16,904	10	0	28,925
---------------------	---------------	------------	----------	---------------	-----------	----------	---------------

AJC PENDING CASE SUMMARY

CHAPTER	DADE DIVISION	BROWARD DIVISION	PALM BEACH DIVISION	TOTAL
7	2,624	1	0	2,625
11	72	2	0	74
12	1	0	0	1
13	4,439	0	0	4,439
304	3	0	0	3
Sub-Total	7,139	3	0	7,142
Act Cases	0	0	0	0
GRAND TOTALS	7,139	3	0	7,142

SHF PENDING CASE SUMMARY

CHAPTER	DADE DIVISION	BROWARD DIVISION	PALM BEACH DIVISION	TOTAL
7	0	0	2,219	2,219
11	0	0	27	27
12	0	0	0	0
13	0	0	2,605	2,605
304	0	0	2	2
Sub-Total	0	0	4,853	4,853
Act Cases	0	0	0	0
GRAND TOTALS	0	0	4,853	4,853

PGH PENDING CASE SUMMARY

CHAPTER	DADE DIVISION	BROWARD DIVISION	PALM BEACH DIVISION	TOTAL
7	13	1,309	785	2,107
11	1	114	34	149
12	0	0	0	0
13	0	1,809	0	1,809
304	0	1	0	1
Sub-Total	14	3,233	819	4,066
Act Cases	0	0	0	0
GRAND TOTALS	14	3,233	819	4,066

RAM PENDING CASE SUMMARY

CHAPTER	DADE DIVISION	BROWARD DIVISION	PALM BEACH DIVISION	TOTAL
7	2,564	0	2	2,566
11	74	0	1	75
12	0	0	0	0
13	4,516	0	0	4,516
304	4	0	0	4
Sub-Total	7,158	0	3	7,161
Act Cases	0	0	0	0
GRAND TOTALS	7,158	0	3	7,161

RBR PENDING CASE SUMMARY

CHAPTER	DADE DIVISION	BROWARD DIVISION	PALM BEACH DIVISION	TOTAL
7	36	2,074	1	2,111
11	0	57	0	57
12	0	0	0	0
13	1,684	1,851	0	3,535
304	0	0	0	0
Sub-Total	1,720	3,982	1	5,703
Act Cases	0	0	0	0
GRAND TOTALS	1,720	3,982	1	5,703

DISTRICT TOTALS	16,031	7,218	5,676	28,925
------------------------	---------------	--------------	--------------	---------------

CASE FILING SUMMARY BY COUNTY

DADE COUNTY - 12025

	7	11	12	13	304	TOTAL
AJC	607	3	0	68	1	679
SHF	0	0	0	0	0	0
PGH	0	0	0	0	0	0
RAM	612	2	0	64	1	679
RBR	0	0	0	36	0	36
Sub-Total	1219	5	0	168	2	1394

MONROE COUNTY - 12087

	7	11	12	13	304	TOTAL
AJC	8	0	0	1	0	9
SHF	0	0	0	0	0	0
PGH	0	0	0	0	0	0
RAM	6	1	0	1	0	8
RBR	0	0	0	0	0	0
Sub-Total	14	1	0	2	0	17

Division Total 1411

BROWARD COUNTY - 12011

	7	11	12	13	304	TOTAL
AJC	0	0	0	0	0	0
SHF	0	0	0	0	0	0
PGH	290	2	0	53	0	345
RAM	0	0	0	0	0	0
RBR	402	3	0	52	0	457
Sub-Total	692	5	0	105	0	802

Division Total 802

HIGHLANDS COUNTY - 12055

	7	11	12	13	304	TOTAL
AJC	0	0	0	0	0	0
SHF	21	0	0	2	0	23
PGH	0	0	0	0	0	0
RAM	0	0	0	0	0	0
RBR	0	0	0	0	0	0
Sub-Total	21	0	0	2	0	23

INDIAN RIVER COUNTY - 12061

	7	11	12	13	304	TOTAL
AJC	0	0	0	0	0	0
SHF	21	0	0	7	0	28
PGH	0	1	0	0	0	1
RAM	0	0	0	0	0	0
RBR	0	0	0	0	0	0
Sub-Total	21	1	0	7	0	29

MARTIN COUNTY - 12085

	7	11	12	13	304	TOTAL
AJC	0	0	0	0	0	0
SHF	25	0	0	6	0	31
PGH	9	0	0	0	0	9
RAM	0	0	0	0	0	0
RBR	0	0	0	0	0	0
Sub-Total	34	0	0	6	0	40

OKEECHOBEE COUNTY - 12093

	7	11	12	13	304	TOTAL
AJC	0	0	0	0	0	0
SHF	10	0	0	4	0	14
PGH	0	0	0	0	0	0
RAM	0	0	0	0	0	0
RBR	0	0	0	0	0	0
Sub-Total	10	0	0	4	0	14

PALM BEACH COUNTY - 12099

	7	11	12	13	304	TOTAL
AJC	0	0	0	0	0	0
SHF	290	3	0	39	0	332
PGH	61	2	0	0	0	63
RAM	0	0	0	0	0	0
RBR	0	0	0	0	0	0
Sub-Total	351	5	0	39	0	395

ST. LUCIE - 12111

	7	11	12	13	304	TOTAL
AJC	0	0	0	0	0	0
SHF	71	0	0	18	0	89
PGH	1	0	0	0	0	1
RAM	0	0	0	0	0	0
RBR	0	0	0	0	0	0
Sub-Total	72	0	0	18	0	90

Division Total 591

GRAND TOTAL	2434	17	0	351	2	2804
--------------------	-------------	-----------	----------	------------	----------	-------------

MAY 2005

CASE FILING SUMMARY BY NATURE OF DEBTOR/DIVISION

CHAPTER	BUSINESS				CONSUMER				TOTAL
	DADE	BROWARD	PALM BCH	DIV. TOTAL	DADE	BROWARD	PALM BCH	DIV. TOTAL	
7	13	14	13	40	1220	678	496	2394	2434
11	6	4	5	15	0	1	1	2	17
12	0	0	0	0	0	0	0	0	0
13	0	0	1	1	170	105	75	350	351
304	1	0	0	1	1	0	0	1	2
TOTAL	20	18	19	57	1391	784	572	2747	2804

DIVISIONAL BUSINESS CASE FILING SUMMARY

DADE DIVISION

CHAPTER	AJC	SHF	PGH	RAM	RBR	TOTAL
7	6	0	0	7	0	13
11	3	0	0	3	0	6
12	0	0	0	0	0	0
13	0	0	0	0	0	0
304	1	0	0	0	0	1
Sub-Total	10	0	0	10	0	20

BROWARD DIVISION

CHAPTER	AJC	SHF	PGH	RAM	RBR	TOTAL
7	0	0	7	0	7	14
11	0	0	2	0	2	4
12	0	0	0	0	0	0
13	0	0	0	0	0	0
304	0	0	0	0	0	0
Sub-Total	0	0	9	0	9	18

PALM BEACH DIVISION

CHAPTER	AJC	SHF	PGH	RAM	RBR	TOTAL
7	0	12	1	0	0	13
11	0	3	2	0	0	5
12	0	0	0	0	0	0
13	0	1	0	0	0	1
304	0	0	0	0	0	0
Sub-Total	0	16	3	0	0	19
GRAND TOTAL	10	16	12	10	9	57

DIVISIONAL CONSUMER CASE FILING SUMMARY

DADE DIVISION

CHAPTER	AJC	SHF	PGH	RAM	RBR	TOTAL
7	609	0	0	611	0	1220
11	0	0	0	0	0	0
12	0	0	0	0	0	0
13	69	0	0	65	36	170
304	0	0	0	1	0	1
Sub-Total	678	0	0	677	36	1391

BROWARD DIVISION

CHAPTER	AJC	SHF	PGH	RAM	RBR	TOTAL
7	0	0	283	0	395	678
11	0	0	0	0	1	1
12	0	0	0	0	0	0
13	0	0	53	0	52	105
304	0	0	0	0	0	0
Sub-Total	0	0	336	0	448	784

PALM BEACH DIVISION

CHAPTER	AJC	SHF	PGH	RAM	RBR	TOTAL
7	0	426	70	0	0	496
11	0	0	1	0	0	1
12	0	0	0	0	0	0
13	0	75	0	0	0	75
304	0	0	0	0	0	0
Sub-Total	0	501	71	0	0	572
GRAND TOTAL	678	501	407	677	484	2747

CASE FILING SUMMARY BY COUNTY / CONSUMER - BUSINESS

CONSUMERS

DADE COUNTY - 12025

	7	11	12	13	304	TOTAL
AJC	601	0	0	68	0	669
SHF	0	0	0	0	0	0
PGH	0	0	0	0	0	0
RAM	605	0	0	64	1	670
RBR	0	0	0	36	0	36
Sub-Total	1206	0	0	168	1	1375

MONROE COUNTY - 12087

	7	11	12	13	304	TOTAL
AJC	8	0	0	1	0	9
SHF	0	0	0	0	0	0
PGH	0	0	0	0	0	0
RAM	6	0	0	1	0	7
RBR	0	0	0	0	0	0
Sub-Total	14	0	0	2	0	16

0 Division
16 Total 1394

BROWARD COUNTY - 12011

	7	11	12	13	304	TOTAL
AJC	0	0	0	0	0	0
SHF	0	0	0	0	0	0
PGH	283	0	0	53	0	336
RAM	0	0	0	0	0	0
RBR	395	1	0	52	0	448
Sub-Total	678	1	0	105	0	784

448 Division
784 Total 784

HIGHLANDS COUNTY - 12055

	7	11	12	13	304	TOTAL
AJC	0	0	0	0	0	0
SHF	21	0	0	2	0	23
PGH	0	0	0	0	0	0
RAM	0	0	0	0	0	0
RBR	0	0	0	0	0	0
Sub-Total	21	0	0	2	0	23

INDIAN RIVER COUNTY - 12061

	7	11	12	13	304	TOTAL
AJC	0	0	0	0	0	0
SHF	21	0	0	7	0	28
PGH	0	0	0	0	0	0
RAM	0	0	0	0	0	0
RBR	0	0	0	0	0	0
Sub-Total	21	0	0	7	0	28

MARTIN COUNTY - 12085

	7	11	12	13	304	TOTAL
AJC	0	0	0	0	0	0
SHF	24	0	0	6	0	30
PGH	9	0	0	0	0	9
RAM	0	0	0	0	0	0
RBR	0	0	0	0	0	0
Sub-Total	33	0	0	6	0	39

OKEECHOBEE COUNTY - 12093

	7	11	12	13	304	TOTAL
AJC	0	0	0	0	0	0
SHF	10	0	0	4	0	14
PGH	0	0	0	0	0	0
RAM	0	0	0	0	0	0
RBR	0	0	0	0	0	0
Sub-Total	10	0	0	4	0	14

PALM BEACH COUNTY - 12099

	7	11	12	13	304	TOTAL
AJC	0	0	0	0	0	0
SHF	282	0	0	39	0	321
PGH	60	1	0	0	0	61
RAM	0	0	0	0	0	0
RBR	0	0	0	0	0	0
Sub-Total	342	1	0	39	0	382

ST. LUCIE - 12111

	7	11	12	13	304	TOTAL
AJC	0	0	0	0	0	0
SHF	68	0	0	17	0	85
PGH	1	0	0	0	0	1
RAM	0	0	0	0	0	0
RBR	0	0	0	0	0	0
Sub-Total	69	0	0	17	0	86

0 Division
86 Total 572

GRAND TOTAL	2394	2	0	350	1	2747
--------------------	-------------	----------	----------	------------	----------	-------------

CASE FILING SUMMARY BY COUNTY / CONSUMER - BUSINESS
BUSINESS

DADE COUNTY - 12025

	7	11	12	13	304	TOTAL
AJC	6	3	0	0	1	10
SHF	0	0	0	0	0	0
PGH	0	0	0	0	0	0
RAM	7	2	0	0	0	9
RBR	0	0	0	0	0	0
Sub-Total	13	5	0	0	1	19

MONROE COUNTY - 12087

	7	11	12	13	304	TOTAL
AJC	0	0	0	0	0	0
SHF	0	0	0	0	0	0
PGH	0	0	0	0	0	0
RAM	0	1	0	0	0	1
RBR	0	0	0	0	0	0
Sub-Total	0	1	0	0	0	1

0 Division
1 Total 20

BROWARD COUNTY - 12011

	7	11	12	13	304	TOTAL
AJC	0	0	0	0	0	0
SHF	0	0	0	0	0	0
PGH	7	2	0	0	0	9
RAM	0	0	0	0	0	0
RBR	7	2	0	0	0	9
Sub-Total	14	4	0	0	0	18

9 Division
18 Total 18

HIGHLANDS COUNTY - 12055

	7	11	12	13	304	TOTAL
AJC	0	0	0	0	0	0
SHF	0	0	0	0	0	0
PGH	0	0	0	0	0	0
RAM	0	0	0	0	0	0
RBR	0	0	0	0	0	0
Sub-Total	0	0	0	0	0	0

INDIAN RIVER COUNTY - 12061

	7	11	12	13	304	TOTAL
AJC	0	0	0	0	0	0
SHF	0	0	0	0	0	0
PGH	0	1	0	0	0	1
RAM	0	0	0	0	0	0
RBR	0	0	0	0	0	0
Sub-Total	0	1	0	0	0	1

MARTIN COUNTY - 12085

	7	11	12	13	304	TOTAL
AJC	0	0	0	0	0	0
SHF	1	0	0	0	0	1
PGH	0	0	0	0	0	0
RAM	0	0	0	0	0	0
RBR	0	0	0	0	0	0
Sub-Total	1	0	0	0	0	1

OKEECHOBEE COUNTY - 12093

	7	11	12	13	304	TOTAL
AJC	0	0	0	0	0	0
SHF	0	0	0	0	0	0
PGH	0	0	0	0	0	0
RAM	0	0	0	0	0	0
RBR	0	0	0	0	0	0
Sub-Total	0	0	0	0	0	0

PALM BEACH COUNTY - 12099

	7	11	12	13	304	TOTAL
AJC	0	0	0	0	0	0
SHF	8	3	0	0	0	11
PGH	1	1	0	0	0	2
RAM	0	0	0	0	0	0
RBR	0	0	0	0	0	0
Sub-Total	9	4	0	0	0	13

ST. LUCIE - 12111

	7	11	12	13	304	TOTAL
AJC	0	0	0	0	0	0
SHF	3	0	0	1	0	4
PGH	0	0	0	0	0	0
RAM	0	0	0	0	0	0
RBR	0	0	0	0	0	0
Sub-Total	3	0	0	1	0	4

0 Division
4 Total 19

GRAND TOTAL	40	15	0	1	1	57
--------------------	-----------	-----------	----------	----------	----------	-----------

AJC	CH 7	CH 11	CH 12	CH 13	SEC 304	TOTAL
JAN	281	2	0	71	0	354
FEB	250	3	0	73	0	326
MAR	434	1	0	78	0	513
APR	619	4	0	98	0	721
MAY	615	3	0	69	1	688
JUN	0	0	0	0	0	0
JUL	0	0	0	0	0	0
AUG	0	0	0	0	0	0
SEP	0	0	0	0	0	0
OCT	0	0	0	0	0	0
NOV	0	0	0	0	0	0
DEC	0	0	0	0	0	0
TOTALS	2199	13	0	389	1	2602

SHF	CH 7	CH 11	CH 12	CH 13	SEC 304	TOTAL
JAN	227	4	0	86	0	317
FEB	235	1	0	77	0	313
MAR	351	2	0	90	0	443
APR	438	2	0	84	0	524
MAY	438	3	0	76	0	517
JUN	0	0	0	0	0	0
JUL	0	0	0	0	0	0
AUG	0	0	0	0	0	0
SEP	0	0	0	0	0	0
OCT	0	0	0	0	0	0
NOV	0	0	0	0	0	0
DEC	0	0	0	0	0	0
TOTALS	1689	12	0	413	0	2114

PGH	CH 7	CH 11	CH 12	CH 13	SEC 304	TOTAL
JAN	222	1	0	60	0	283
FEB	239	4	0	57	0	300
MAR	362	2	0	64	0	428
APR	509	4	0	64	0	577
MAY	361	5	0	53	0	419
JUN	0	0	0	0	0	0
JUL	0	0	0	0	0	0
AUG	0	0	0	0	0	0
SEP	0	0	0	0	0	0
OCT	0	0	0	0	0	0
NOV	0	0	0	0	0	0
DEC	0	0	0	0	0	0
TOTALS	1693	16	0	298	0	2007

RAM	CH 7	CH 11	CH 12	CH 13	SEC 304	TOTAL
JAN	274	1	0	72	0	347
FEB	255	2	0	72	0	329
MAR	429	0	0	76	0	505
APR	614	3	0	102	0	719
MAY	618	3	0	65	1	687
JUN	0	0	0	0	0	0
JUL	0	0	0	0	0	0
AUG	0	0	0	0	0	0
SEP	0	0	0	0	0	0
OCT	0	0	0	0	0	0
NOV	0	0	0	0	0	0
DEC	0	0	0	0	0	0
TOTALS	2190	9	0	387	1	2587

RBR	CH 7	CH 11	CH 12	CH 13	SEC 304	TOTAL
JAN	226	1	0	104	0	331
FEB	247	2	0	101	0	350
MAR	361	1	0	103	0	465
APR	459	0	0	123	0	582
MAY	402	3	0	88	0	493
JUN	0	0	0	0	0	0
JUL	0	0	0	0	0	0
AUG	0	0	0	0	0	0
SEP	0	0	0	0	0	0
OCT	0	0	0	0	0	0
NOV	0	0	0	0	0	0
DEC	0	0	0	0	0	0
TOTALS	1695	7	0	519	0	2221

**2005 YEAR-TO-DATE COMPARISON OF BANKRUPTCY CASE FILINGS
BY JUDGE**

	AJC	SHF	PGH	RAM	RBR	TOTAL
JAN	354	317	283	347	331	1632
FEB	326	313	300	329	350	1618
MAR	513	443	428	505	465	2354
APR	721	524	577	719	582	3123
MAY	688	517	419	687	493	2804
JUN	0	0	0	0	0	0
JUL	0	0	0	0	0	0
AUG	0	0	0	0	0	0
SEP	0	0	0	0	0	0
OCT	0	0	0	0	0	0
NOV	0	0	0	0	0	0
DEC	0	0	0	0	0	0
TOTALS	2602	2114	2007	2587	2221	11531
% of Total	22.57	18.33	17.41	22.44	19.26	

**2005 YEAR-TO-DATE COMPARISON OF BANKRUPTCY CASE FILINGS
BY JUDGE/CHAPTER**

	CH 7	CH 11	CH 12	CH 13	SEC 304	TOTAL
AJC	2199	13	0	389	1	2602
SHF	1689	12	0	413	0	2114
PGH	1693	16	0	298	0	2007
RAM	2190	9	0	387	1	2587
RBR	1695	7	0	519	0	2221
TOTALS	9466	57	0	2006	2	11531

CALENDAR YEAR-TO-DATE COMPARISON

	ENDING MAY 05	ENDING MAY 04	PERCENT CHANGE
Bankruptcy Case Filings	11531	11538	-0.06
Bankruptcy Case Closings	11573	11990	-3.48
Adversary Filings	382	490	-22.04
Adversary Closings	582	1023	-43.11

12-MONTH/THREE YEAR COMPARISON

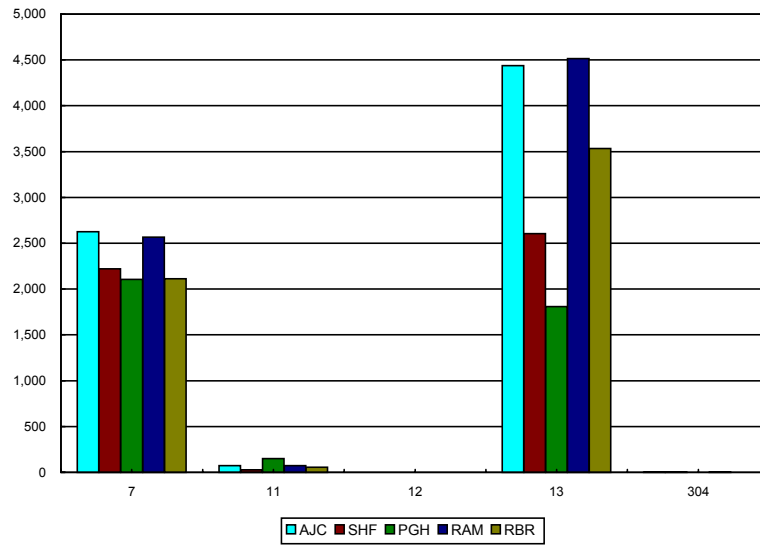
	ENDING MAY 05	ENDING MAY 04	ENDING MAY 03	% CHANGE 2005 / 2004	% CHANGE 2005 / 2 003
Bankruptcy Case Filings	26473	30106	32172	-12.07	-17.71
Bankruptcy Case Closings	29545	30425	31157	-2.89	-5.17
Adversary Filings	1245	2322	1872	-46.38	-33.49
Adversary Closings	1435	2637	1538	-45.58	-6.70

MONTHLY COMPARISON

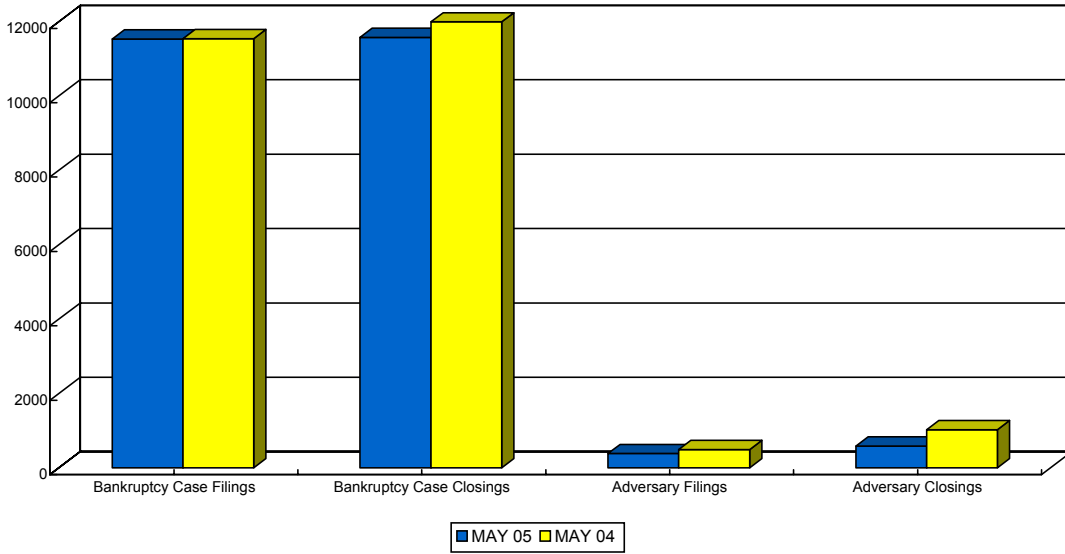
	MAY 05	MAY 04	PERCENT CHANGE
Bankruptcy Case Filings	2804	2497	12.29
Bankruptcy Case Closings	1786	2052	-12.96
Adversary Filings	67	72	-6.94
Adversary Closings	76	195	-61.03

*Filings and Closings for Dade Division includes Monroe County
 Filings and Closings for Palm Beach Division includes Indian River, Highlands, Martin,
 St. Lucie & Okeechobee Counties*

TOTAL PENDING CASELOAD BY JUDGE/CHAPTER



CALENDAR YEAR-TO-DATE COMPARISON



12-MONTH/THREE YEAR COMPARISON

