

UNITED STATES BANKRUPTCY COURT

SOUTHERN DISTRICT OF FLORIDA

*51 S.W. 1st Avenue
Room 1401
Miami, FL 33130*

*Katherine Gould-Feldman
Clerk of Court*



MONTHLY STATISTICAL REPORT

April 2008

MONTHLY STATISTICAL REPORT

TABLE OF CONTENTS

	<i>page</i>
<i>I. MONTHLY SARD SUMMARY REPORT</i>	<i>2</i>
<i>II. BK CASE FILINGS SUMMARY REPORT</i>	<i>3</i>
<i>III. BK CASE CLOSINGS SUMMARY REPORT</i>	<i>4</i>
<i>IV. AP CASE FILINGS SUMMARY REPORT</i>	<i>3</i>
<i>V. AP CASE CLOSINGS SUMMARY REPORT</i>	<i>4</i>
<i>VI. BK PRO SE CASES FILING SUMMARY REPORT</i>	<i>5</i>
<i>VII. PENDING CASELOAD REPORT BY JUDGE/CHAPTER</i>	<i>6</i>
<i>VIII. DIVISIONAL CASELOAD REPORT</i>	<i>7</i>
<i>IX. CASE FILING BREAKDOWN BY COUNTY</i>	<i>8</i>
<i>X. BREAKDOWN BY NATURE OF DEBTOR</i>	<i>9</i>
<i>XI. BREAKDOWN BY COUNTY / NATURE - CONSUMER</i>	<i>10</i>
<i>XII. BREAKDOWN BY COUNTY / NATURE - BUSINESS</i>	<i>11</i>
<i>XIII. SUMMARIES AND GRAPHS</i>	<i>12 - 16</i>

**APRIL 2008
MONTHLY SARD REPORT SUMMARY**

2

I. BC101 REPORT OF BANKRUPTCY CASES

	AJC	LMI	RAM	JKO	RBR	PGH	DHA	TOTAL
Pending Prior Month	2,740	1,876	2,766	2,275	2,374	3,910	1	15,942
Cases Filed	224	230	226	265	267	387	1	1,600
Reopened	5	7	18	6	9	6	0	51
Split Cases	0	0	0	1	0	0	0	1
Trans. In	1	0	1	0	0	0	0	2
Reassigned To	1	0	1	0	0	1	0	3
Trans. Out	0	0	0	0	0	0	0	0
Reassigned From	1	1	0	1	0	0	0	3
Cases Closed	204	167	206	184	197	389	0	1,347
Cases Pending	2,766	1,945	2,806	2,362	2,453	3,915	2	16,249

II. BC109 REPORT OF ADVERSARY CASES

	AJC	LMI	RAM	JKO	RBR	PGH	DHA	TOTAL
Pending Prior Month	116	53	30	141	157	102	0	599
Cases Filed	6	5	8	9	14	14	0	56
Trans. In	0	0	0	0	0	0	0	0
Reassigned To	0	0	0	0	0	0	0	0
Cases Reopened	0	0	0	0	0	1	0	1
Cases Closed	40	7	4	2	17	0	0	70
Trans. Out	0	0	0	0	0	0	0	0
Reassigned From	0	0	0	0	0	0	0	0
Cases Pending	82	51	34	148	154	117	0	586

IV. MONTHLY REPORT OF TRIALS AND OTHER ACTIVITY

	Contested Proceedings	Miscellaneous Proceedings	Total Hours in Court
AJC	0	23	23
PGH	5	24	29
LMI	9	18	27
RAM	4	22	26
JKO	4	24	28
RBR	10	24	34
DHA	0	0	0
Total	32	135	167

Cases Summary Report Group By Person Office
 New Filed: 4/1/2008 - 4/30/2008

Judge	Office	Ch7	Ch9	Ch11	Ch12	Ch13	Ch15	304	Total	Adv	Mis
AJC	Miami	170	0	2	0	52	0	0	224	6	0
LMI	Miami	175	0	2	0	53	0	0	230	5	1
RAM	Miami	172	0	3	0	51	0	0	226	8	0
JKO	Broward	173	0	5	0	87	0	0	265	9	0
RBR	Broward	176	0	3	0	88	0	0	267	14	0
DHA	WPB	1	0	0	0	0	0	0	1	0	0
PGH	WPB	291	0	1	0	95	0	0	387	14	0
Total		1158	0	16	0	426	0	0	1600	56	1

$$\frac{1}{1601}$$

8- 14291- AJC (7)

Cases Summary Report Group By Person Office
Closed: 4/1/2008 - 4/30/2008

Judge	Office	Ch7	Ch9	Ch11	Ch12	Ch13	Ch15	304	Total	Adv	Mis
AJC	Miami	111	0	0	0	93	0	0	204	40	0
LMI	Miami	120	0	1	0	46	0	0	167	7	0
RAM	Miami	113	0	1	0	92	0	0	206	4	0
JKO	Broward	140	0	2	0	42	0	0	184	2	0
RBR	Broward	152	0	1	0	44	0	0	197	17	0
PGH	WPB	295	0	14	0	80	0	0	389	0	0
Total		931	0	19	0	397	0	0	1347	70	0

Cases Summary Report Group By Person County
 Pro Se: 04/01/2008 - 04/30/2008

5

Judge	County	Ch7	Ch9	Ch11	Ch12	Ch13	Ch15	304	Total	Adv	Mis
LMI	?	0	0	0	0	0	0	0	0	0	1
JKO	Broward	23	0	0	0	3	0	0	26	0	0
RBR	Broward	13	0	0	0	8	0	0	21	0	0
PGH	Highlands	2	0	0	0	0	0	0	2	0	0
PGH	Indian River	6	0	0	0	0	0	0	6	0	0
AJC	Miami-Dade	1	0	0	0	6	0	0	7	0	0
LMI	Miami-Dade	4	0	0	0	7	0	0	11	0	0
RAM	Miami-Dade	2	0	0	0	11	0	0	13	0	0
PGH	Palm Beach	15	0	0	0	7	0	0	22	0	0
PGH	St. Lucie	3	0	0	0	0	0	0	3	0	0
Total		69	0	0	0	42	0	0	111	0	1

PENDING CASELOAD REPORTS BY JUDGE/CHAPTER
APRIL 2008

AJC	7	11	12	13	15	304	TOTALS
Pending Prior Month	952	76	1	1,707	0	4	2,740
Cases Filed	170	2	0	52	0	0	224
Reopened	3	0	0	2	0	0	5
Split Cases	0	0	0	0	0	0	0
Transferred In	1	0	0	0	0	0	1
Reassigned To	1	0	0	0	0	0	1
Converted To	3	0	0	2	0	0	5
Transferred Out	0	0	0	0	0	0	0
Reassigned From	1	0	0	0	0	0	1
Converted From	2	0	0	3	0	0	5
Cases Closed	111	0	0	93	0	0	204
Total Pending	1,016	78	1	1,667	0	4	2,766
PGH	7	11	12	13	15	304	TOTALS
Pending Prior Month	1,689	121	1	2,099	0	0	3,910
Cases Filed	291	1	0	95	0	0	387
Reopened	5	0	0	1	0	0	6
Split Cases	0	0	0	0	0	0	0
Transferred In	0	0	0	0	0	0	0
Reassigned To	1	0	0	0	0	0	1
Converted To	9	0	0	3	0	0	12
Transferred Out	0	0	0	0	0	0	0
Reassigned From	0	0	0	0	0	0	0
Converted From	3	0	0	9	0	0	12
Cases Closed	295	14	0	80	0	0	389
Total Pending	1,697	108	1	2,109	0	0	3,915
LMI	7	11	12	13	15	304	TOTALS
Pending Prior Month	901	51	1	921	2	0	1,876
Cases Filed	175	2	0	53	0	0	230
Reopened	7	0	0	0	0	0	7
Split Cases	0	0	0	0	0	0	0
Transferred In	0	0	0	0	0	0	0
Reassigned To	0	0	0	0	0	0	0
Converted To	3	0	0	1	0	0	4
Transferred Out	0	0	0	0	0	0	0
Reassigned From	1	0	0	0	0	0	1
Converted From	0	1	0	3	0	0	4
Cases Closed	120	1	0	46	0	0	167
Total Pending	965	51	1	926	2	0	1,945
RAM	7	11	12	13	15	304	TOTALS
Pending Prior Month	956	45	0	1,762	1	2	2,766
Cases Filed	172	3	0	51	0	0	226
Reopened	14	0	0	4	0	0	18
Split Cases	0	0	0	0	0	0	0
Transferred In	1	0	0	0	0	0	1
Reassigned To	1	0	0	0	0	0	1
Converted To	3	0	0	1	0	0	4
Transferred Out	0	0	0	0	0	0	0
Reassigned From	0	0	0	0	0	0	0
Converted From	1	1	0	2	0	0	4
Cases Closed	113	1	0	92	0	0	206
Total Pending	1,033	46	0	1,724	1	2	2,806
JKO	7	11	12	13	15	304	TOTALS
Pending Prior Month	909	95	0	1,271	0	0	2,275
Cases Filed	173	5	0	87	0	0	265
Reopened	4	0	0	2	0	0	6
Split Cases	1	0	0	0	0	0	1
Transferred In	0	0	0	0	0	0	0
Reassigned To	0	0	0	0	0	0	0
Converted To	15	1	0	1	0	0	17
Transferred Out	0	0	0	0	0	0	0
Reassigned From	1	0	0	0	0	0	1
Converted From	1	0	0	16	0	0	17
Cases Closed	140	2	0	42	0	0	184
Total Pending	960	99	0	1,303	0	0	2,362
RBR	7	11	12	13	15	304	TOTALS
Pending Prior Month	963	110	0	1,301	0	0	2,374
Cases Filed	176	3	0	88	0	0	267
Reopened	8	0	0	1	0	0	9
Split Cases	0	0	0	0	0	0	0
Transferred In	0	0	0	0	0	0	0
Reassigned To	0	0	0	0	0	0	0
Converted To	7	0	0	0	0	0	7
Transferred Out	0	0	0	0	0	0	0
Reassigned From	0	0	0	0	0	0	0
Converted From	0	0	0	7	0	0	7
Cases Closed	152	1	0	44	0	0	197
Total Pending	1,002	112	0	1,339	0	0	2,453
DHA	7	11	12	13	15	304	TOTALS
Pending Prior Month	1	1	1	1	1	1	6
Cases Filed	1	1	1	1	1	1	6
Reopened	0	0	0	0	0	0	0
Split Cases	0	0	0	0	0	#REF!	#REF!
Transferred In	0	0	0	0	0	0	0
Reassigned To	0	0	0	0	0	0	0
Converted To	0	0	0	0	0	0	0
Transferred Out	0	0	0	0	0	0	0
Reassigned From	0	0	0	0	0	0	0
Converted From	0	0	0	0	0	0	0
Cases Closed	0	0	0	0	0	0	0
Total Pending	2	2	2	2	2	#REF!	#REF!
GRAND TOTAL:	6,675	496	5	9,070	5	#REF!	#REF!

AJC PENDING CASE SUMMARY

CHAPTER	DADE DIVISION	BROWARD DIVISION	PALM BEACH DIVISION	TOTAL
7	1,016	0	0	1,016
11	78	0	0	78
12	1	0	0	1
13	1,667	0	0	1,667
15	0	0	0	0
304	4	0	0	4
TOTALS	2,766	0	0	2,766

LMI PENDING CASE SUMMARY

CHAPTER	DADE DIVISION	BROWARD DIVISION	PALM BEACH DIVISION	TOTAL
7	965	0	0	965
11	51	0	0	51
12	1	0	0	1
13	926	0	0	926
15	2	0	0	2
304	0	0	0	0
TOTALS	1,945	0	0	1,945

PGH PENDING CASE SUMMARY

CHAPTER	DADE DIVISION	BROWARD DIVISION	PALM BEACH DIVISION	TOTAL
7	0	2	1,695	1,697
11	1	1	106	108
12	0	0	1	1
13	0	0	2,109	2,109
15	0	0	0	0
304	0	0	0	0
TOTALS	1	3	3,911	3,915

RAM PENDING CASE SUMMARY

CHAPTER	DADE DIVISION	BROWARD DIVISION	PALM BEACH DIVISION	TOTAL
7	1,031	0	2	1,033
11	45	0	1	46
12	0	0	0	0
13	1,724	0	0	1,724
15	1	0	0	1
304	2	0	0	2
TOTALS	2,803	0	3	2,806

JKO PENDING CASE SUMMARY

CHAPTER	DADE DIVISION	BROWARD DIVISION	PALM BEACH DIVISION	TOTAL
7	0	957	3	960
11	1	98	0	99
12	0	0	0	0
13	0	1,303	0	1,303
15	0	0	0	0
304	0	0	0	0
TOTALS	1	2,358	3	2,362

RBR PENDING CASE SUMMARY

CHAPTER	DADE DIVISION	BROWARD DIVISION	PALM BEACH DIVISION	TOTAL
7	2	998	2	1,002
11	0	111	1	112
12	0	0	0	0
13	0	1,339	0	1,339
15	0	0	0	0
304	0	0	0	0
TOTALS	2	2,448	3	2,453

DHA PENDING CASE SUMMARY

CHAPTER	DADE DIVISION	BROWARD DIVISION	PALM BEACH DIVISION	TOTAL
7	0	0	2	2
11	0	0	0	0
12	0	0	0	0
13	0	0	0	0
15	0	0	0	0
304	0	#REF!	0	#REF!
TOTALS	0	#REF!	2	#REF!

DISTRICT TOTALS	7,518	#REF!	3,922	#REF!
------------------------	--------------	--------------	--------------	--------------

CASE FILING SUMMARY BY COUNTY

DADE COUNTY - 12025

	7	11	12	13	15	TOTAL
AJC	169	2	0	51	0	222
PGH	0	0	0	0	0	0
LMI	171	2	0	51	0	224
RAM	170	3	0	51	0	224
JKO	0	0	0	0	0	0
RBR	0	0	0	0	0	0
Sub-Total	510	7	0	153	0	670

MONROE COUNTY - 12087

	7	11	12	13	15	TOTAL
AJC	2	0	0	1	0	3
PGH	0	0	0	0	0	0
LMI	4	0	0	2	0	6
RAM	2	0	0	0	0	2
JKO	0	0	0	0	0	0
RBR	0	0	0	0	0	0
Sub-Total	8	0	0	3	0	11
						Division Total
						681

BROWARD COUNTY - 12011

	7	11	12	13	15	TOTAL
AJC	0	0	0	0	0	0
PGH	0	0	0	0	0	0
LMI	0	0	0	0	0	0
RAM	0	0	0	0	0	0
JKO	174	5	0	87	0	266
RBR	176	3	0	88	0	267
Sub-Total	350	8	0	175	0	533
						Division Total
						533

HIGHLANDS COUNTY - 12055

	7	11	12	13	15	TOTAL
AJC	0	0	0	0	0	0
PGH	8	0	0	3	0	11
LMI	0	0	0	0	0	0
RAM	0	0	0	0	0	0
JKO	0	0	0	0	0	0
RBR	0	0	0	0	0	0
Sub-Total	8	0	0	3	0	11

INDIAN RIVER COUNTY - 12061

	7	11	12	13	15	TOTAL
AJC	0	0	0	0	0	0
PGH	25	0	0	3	0	28
LMI	0	0	0	0	0	0
RAM	0	0	0	0	0	0
JKO	0	0	0	0	0	0
RBR	0	0	0	0	0	0
Sub-Total	25	0	0	3	0	28

MARTIN COUNTY - 12085

	7	11	12	13	15	TOTAL
AJC	0	0	0	0	0	0
PGH	22	0	0	9	0	31
LMI	0	0	0	0	0	0
RAM	0	0	0	0	0	0
JKO	0	0	0	0	0	0
RBR	0	0	0	0	0	0
Sub-Total	22	0	0	9	0	31

OKEECHOBEE COUNTY - 12093

	7	11	12	13	15	TOTAL
AJC	0	0	0	0	0	0
PGH	4	0	0	6	0	10
LMI	0	0	0	0	0	0
RAM	0	0	0	0	0	0
JKO	0	0	0	0	0	0
RBR	0	0	0	0	0	0
Sub-Total	4	0	0	6	0	10

PALM BEACH COUNTY - 12099

	7	11	12	13	15	TOTAL
AJC	0	0	0	0	0	0
PGH	174	1	0	53	0	228
LMI	0	0	0	0	0	0
RAM	0	0	0	0	0	0
JKO	0	0	0	0	0	0
DHA	1	0	0	0	0	1
Sub-Total	175	1	0	53	0	229

ST. LUCIE - 12111

	7	11	12	13	15	TOTAL
AJC	0	0	0	0	0	0
PGH	58	0	0	21	0	79
LMI	0	0	0	0	0	0
RAM	0	0	0	0	0	0
JKO	0	0	0	0	0	0
RBR	0	0	0	0	0	0
Sub-Total	58	0	0	21	0	79
						Division Total
						388

GRAND TOTAL	1160	16	0	426	0	1602
--------------------	-------------	-----------	----------	------------	----------	-------------

**APRIL 2008
CASE FILING SUMMARY BY NATURE OF DEBTOR/DIVISION**

CHAPTER	BUSINESS				CONSUMER				TOTAL
	DADE	BROWARD	PALM BCH	DIV. TOTAL	DADE	BROWARD	PALM BCH	DIV. TOTAL	
7	27	30	18	75	491	320	274	1085	1160
11	7	6	1	14	0	2	0	2	16
12	0	0	0	0	0	0	0	0	0
13	1	5	3	9	155	170	92	417	426
15	0	0	0	0	0	0	0	0	0
TOTAL	35	41	22	98	646	492	366	1504	1602

DIVISIONAL BUSINESS CASE FILING SUMMARY

DADE DIVISION

CHAPTER	AJC	PGH	LMI	RAM	JKO	RBR	DHA	TOTAL
7	6	0	7	14	0	0	0	27
11	2	0	2	3	0	0	0	7
12	0	0	0	0	0	0	0	0
13	1	0	0	0	0	0	0	1
15	0	0	0	0	0	0	0	0
Sub-Total	9	0	9	17	0	0	0	35

BROWARD DIVISION

CHAPTER	AJC	PGH	LMI	RAM	JKO	RBR	DHA	TOTAL
7	0	0	0	0	14	16	0	30
11	0	0	0	0	4	2	0	6
12	0	0	0	0	0	0	0	0
13	0	0	0	0	0	5	0	5
15	0	0	0	0	0	0	0	0
Sub-Total	0	0	0	0	18	23	0	41

PALM BEACH DIVISION

CHAPTER	AJC	PGH	LMI	RAM	JKO	RBR	DHA	TOTAL
7	0	18	0	0	0	0	0	18
11	0	1	0	0	0	0	0	1
12	0	0	0	0	0	0	0	0
13	0	3	0	0	0	0	0	3
15	0	0	0	0	0	0	0	0
Sub-Total	0	22	0	0	0	0	0	22
GRAND TOTAL	9	22	9	17	18	23	0	98

DIVISIONAL CONSUMER CASE FILING SUMMARY

DADE DIVISION

CHAPTER	AJC	PGH	LMI	RAM	JKO	RBR	DHA	TOTAL
7	165	0	168	158	0	0	0	491
11	0	0	0	0	0	0	0	0
12	0	0	0	0	0	0	0	0
13	51	0	53	51	0	0	0	155
15	0	0	0	0	0	0	0	0
Sub-Total	216	0	221	209	0	0	0	646

BROWARD DIVISION

CHAPTER	AJC	PGH	LMI	RAM	JKO	RBR	DHA	TOTAL
7	0	0	0	0	160	160	0	320
11	0	0	0	0	1	1	0	2
12	0	0	0	0	0	0	0	0
13	0	0	0	0	87	83	0	170
15	0	0	0	0	0	0	0	0
Sub-Total	0	0	0	0	248	244	0	492

PALM BEACH DIVISION

CHAPTER	AJC	PGH	LMI	RAM	JKO	RBR	DHA	TOTAL
7	0	273	0	0	0	0	1	274
11	0	0	0	0	0	0	0	0
12	0	0	0	0	0	0	0	0
13	0	92	0	0	0	0	0	92
15	0	0	0	0	0	0	0	0
Sub-Total	0	365	0	0	0	0	1	366
GRAND TOTAL	216	365	221	209	248	244	1	1,504

CASE FILING SUMMARY BY COUNTY / CONSUMER - BUSINESS

CONSUMERS

DADE COUNTY - 12025

	7	11	12	13	15	TOTAL
AJC	163	0	0	50	0	213
PGH	0	0	0	0	0	0
LMI	164	0	0	51	0	215
RAM	156	0	0	51	0	207
JKO	0	0	0	0	0	0
RBR	0	0	0	0	0	0
Sub-Total	483	0	0	152	0	635

MONROE COUNTY - 12087

	7	11	12	13	15	TOTAL
AJC	2	0	0	1	0	3
PGH	0	0	0	0	0	0
LMI	4	0	0	2	0	6
RAM	2	0	0	0	0	2
JKO	0	0	0	0	0	0
RBR	0	0	0	0	0	0
Sub-Total	8	0	0	3	0	11

Division Total 646

BROWARD COUNTY - 12011

	7	11	12	13	15	TOTAL
AJC	0	0	0	0	0	0
PGH	0	0	0	0	0	0
LMI	0	0	0	0	0	0
RAM	0	0	0	0	0	0
JKO	160	1	0	87	0	248
RBR	160	1	0	83	0	244
Sub-Total	320	2	0	170	0	492

Division Total 492

HIGHLANDS COUNTY - 12055

	7	11	12	13	15	TOTAL
AJC	0	0	0	0	0	0
PGH	8	0	0	3	0	11
LMI	0	0	0	0	0	0
RAM	0	0	0	0	0	0
JKO	0	0	0	0	0	0
RBR	0	0	0	0	0	0
Sub-Total	8	0	0	3	0	11

INDIAN RIVER COUNTY - 12061

	7	11	12	13	15	TOTAL
AJC	0	0	0	0	0	0
PGH	25	0	0	3	0	28
LMI	0	0	0	0	0	0
RAM	0	0	0	0	0	0
JKO	0	0	0	0	0	0
RBR	0	0	0	0	0	0
Sub-Total	25	0	0	3	0	28

MARTIN COUNTY - 12085

	7	11	12	13	15	TOTAL
AJC	0	0	0	0	0	0
PGH	20	0	0	9	0	29
LMI	0	0	0	0	0	0
RAM	0	0	0	0	0	0
JKO	0	0	0	0	0	0
RBR	0	0	0	0	0	0
Sub-Total	20	0	0	9	0	29

OKEECHOBEE COUNTY - 12093

	7	11	12	13	15	TOTAL
AJC	0	0	0	0	0	0
PGH	4	0	0	6	0	10
LMI	0	0	0	0	0	0
RAM	0	0	0	0	0	0
JKO	0	0	0	0	0	0
RBR	0	0	0	0	0	0
Sub-Total	4	0	0	6	0	10

PALM BEACH COUNTY - 12099

	7	11	12	13	15	TOTAL
AJC	0	0	0	0	0	0
PGH	163	0	0	51	0	214
LMI	0	0	0	0	0	0
RAM	0	0	0	0	0	0
JKO	0	0	0	0	0	0
DHA	1	0	0	0	0	1
Sub-Total	164	0	0	51	0	215

ST. LUCIE - 12111

	7	11	12	13	15	TOTAL
AJC	0	0	0	0	0	0
PGH	53	0	0	20	0	73
LMI	0	0	0	0	0	0
RAM	0	0	0	0	0	0
JKO	0	0	0	0	0	0
RBR	0	0	0	0	0	0
Sub-Total	53	0	0	20	0	73

Division Total 366

GRAND TOTAL	1085	2	0	417	0	1504
--------------------	-------------	----------	----------	------------	----------	-------------

CASE FILING SUMMARY BY COUNTY / CONSUMER - BUSINESS

BUSINESS

DADE COUNTY - 12025

	7	11	12	13	15	TOTAL
AJC	6	2	0	1	0	9
PGH	0	0	0	0	0	0
LMI	7	2	0	0	0	9
RAM	14	3	0	0	0	17
JKO	0	0	0	0	0	0
RBR	0	0	0	0	0	0
Sub-Total	27	7	0	1	0	35

MONROE COUNTY - 12087

	7	11	12	13	15	TOTAL
AJC	0	0	0	0	0	0
PGH	0	0	0	0	0	0
LMI	0	0	0	0	0	0
RAM	0	0	0	0	0	0
JKO	0	0	0	0	0	0
RBR	0	0	0	0	0	0
Sub-Total	0	0	0	0	0	0

Division Total 35

BROWARD COUNTY - 12011

	7	11	12	13	15	TOTAL
AJC	0	0	0	0	0	0
PGH	0	0	0	0	0	0
LMI	0	0	0	0	0	0
RAM	0	0	0	0	0	0
JKO	14	4	0	0	0	18
RBR	16	2	0	5	0	23
Sub-Total	30	6	0	5	0	41

Division Total 41

HIGHLANDS COUNTY - 12055

	7	11	12	13	15	TOTAL
AJC	0	0	0	0	0	0
PGH	0	0	0	0	0	0
LMI	0	0	0	0	0	0
RAM	0	0	0	0	0	0
JKO	0	0	0	0	0	0
RBR	0	0	0	0	0	0
Sub-Total	0	0	0	0	0	0

INDIAN RIVER COUNTY - 12061

	7	11	12	13	15	TOTAL
AJC	0	0	0	0	0	0
PGH	0	0	0	0	0	0
LMI	0	0	0	0	0	0
RAM	0	0	0	0	0	0
JKO	0	0	0	0	0	0
RBR	0	0	0	0	0	0
Sub-Total	0	0	0	0	0	0

MARTIN COUNTY - 12085

	7	11	12	13	15	TOTAL
AJC	0	0	0	0	0	0
PGH	2	0	0	0	0	2
LMI	0	0	0	0	0	0
RAM	0	0	0	0	0	0
JKO	0	0	0	0	0	0
RBR	0	0	0	0	0	0
Sub-Total	2	0	0	0	0	2

OKEECHOBEE COUNTY - 12093

	7	11	12	13	15	TOTAL
AJC	0	0	0	0	0	0
PGH	0	0	0	0	0	0
LMI	0	0	0	0	0	0
RAM	0	0	0	0	0	0
JKO	0	0	0	0	0	0
RBR	0	0	0	0	0	0
Sub-Total	0	0	0	0	0	0

PALM BEACH COUNTY - 12099

	7	11	12	13	15	TOTAL
AJC	0	0	0	0	0	0
PGH	11	1	0	2	0	14
LMI	0	0	0	0	0	0
RAM	0	0	0	0	0	0
JKO	0	0	0	0	0	0
DHA	0	0	0	0	0	0
Sub-Total	11	1	0	2	0	14

ST. LUCIE - 12111

	7	11	12	13	15	TOTAL
AJC	0	0	0	0	0	0
PGH	5	0	0	1	0	6
LMI	0	0	0	0	0	0
RAM	0	0	0	0	0	0
JKO	0	0	0	0	0	0
RBR	0	0	0	0	0	0
Sub-Total	5	0	0	1	0	6

Division Total 22

GRAND TOTAL	75	14	0	9	0	98
--------------------	-----------	-----------	----------	----------	----------	-----------

2008 COMPARISON OF BANKRUPTCY FILINGS

AJC	CH 7	CH 11	CH 12	CH 13	CH 15	TOTAL
JAN	118	10	0	39	0	167
FEB	140	1	0	43	0	184
MAR	165	3	0	47	0	215
APR	171	2	0	52	0	225
MAY	0	0	0	0	0	0
JUN	0	0	0	0	0	0
JUL	0	0	0	0	0	0
AUG	0	0	0	0	0	0
SEP	0	0	0	0	0	0
OCT	0	0	0	0	0	0
NOV	0	0	0	0	0	0
DEC	0	0	0	0	0	0
TOTALS	594	16	0	181	0	791

PGH	CH 7	CH 11	CH 12	CH 13	CH 15	TOTAL
JAN	198	11	0	95	0	304
FEB	234	3	0	92	0	329
MAR	288	3	0	109	0	400
APR	291	1	0	95	0	387
MAY	0	0	0	0	0	0
JUN	0	0	0	0	0	0
JUL	0	0	0	0	0	0
AUG	0	0	0	0	0	0
SEP	0	0	0	0	0	0
OCT	0	0	0	0	0	0
NOV	0	0	0	0	0	0
DEC	0	0	0	0	0	0
TOTALS	1011	18	0	391	0	1420

LMI	CH 7	CH 11	CH 12	CH 13	CH 15	TOTAL
JAN	121	1	0	41	1	164
FEB	141	3	1	41	0	186
MAR	163	1	0	48	0	212
APR	175	2	0	53	0	230
MAY	0	0	0	0	0	0
JUN	0	0	0	0	0	0
JUL	0	0	0	0	0	0
AUG	0	0	0	0	0	0
SEP	0	0	0	0	0	0
OCT	0	0	0	0	0	0
NOV	0	0	0	0	0	0
DEC	0	0	0	0	0	0
TOTALS	600	7	1	183	1	792

RAM	CH 7	CH 11	CH 12	CH 13	CH 15	TOTAL
JAN	122	2	0	42	0	166
FEB	136	4	0	40	0	180
MAR	163	0	0	50	0	213
APR	172	3	0	51	0	226
MAY	0	0	0	0	0	0
JUN	0	0	0	0	0	0
JUL	0	0	0	0	0	0
AUG	0	0	0	0	0	0
SEP	0	0	0	0	0	0
OCT	0	0	0	0	0	0
NOV	0	0	0	0	0	0
DEC	0	0	0	0	0	0
TOTALS	593	9	0	183	0	785

JKO	CH 7	CH 11	CH 12	CH 13	CH 15	TOTAL
JAN	108	40	0	60	0	208
FEB	129	0	0	68	0	197
MAR	162	2	0	72	0	236
APR	174	5	0	87	0	266
MAY	0	0	0	0	0	0
JUN	0	0	0	0	0	0
JUL	0	0	0	0	0	0
AUG	0	0	0	0	0	0
SEP	0	0	0	0	0	0
OCT	0	0	0	0	0	0
NOV	0	0	0	0	0	0
DEC	0	0	0	0	0	0
TOTALS	573	47	0	287	0	907

RBR	CH 7	CH 11	CH 12	CH 13	CH 15	TOTAL
JAN	109	29	0	60	0	198
FEB	129	3	0	62	0	194
MAR	157	3	0	72	0	232
APR	176	3	0	88	0	267
MAY	0	0	0	0	0	0
JUN	0	0	0	0	0	0
JUL	0	0	0	0	0	0
AUG	0	0	0	0	0	0
SEP	0	0	0	0	0	0
OCT	0	0	0	0	0	0
NOV	0	0	0	0	0	0
DEC	0	0	0	0	0	0
TOTALS	571	38	0	282	0	891

DHA	CH 7	CH 11	CH 12	CH 13	CH 15	TOTAL
JAN	0	0	0	0	0	0
FEB	0	0	0	0	0	0
MAR	0	0	0	0	0	0
APR	1	0	0	0	0	1
MAY	0	0	0	0	0	0
JUN	0	0	0	0	0	0
JUL	0	0	0	0	0	0
AUG	0	0	0	0	0	0
SEP	0	0	0	0	0	0
OCT	0	0	0	0	0	0
NOV	0	0	0	0	0	0
DEC	0	0	0	0	0	0
TOTALS	1	0	0	0	0	1

2008 YEAR-TO-DATE COMPARISON OF BANKRUPTCY CASE FILINGS
BY JUDGE

	AJC	PGH	LMI	RAM	JKO	RBR	DHA	TOTAL
JAN	167	304	184	166	208	198	0	1207
FEB	184	329	196	180	197	194	0	1270
MAR	215	400	212	213	236	232	0	1508
APR	225	387	230	226	266	267	1	1602
MAY	0	0	0	0	0	0	0	0
JUN	0	0	0	0	0	0	0	0
JUL	0	0	0	0	0	0	0	0
AUG	0	0	0	0	0	0	0	0
SEP	0	0	0	0	0	0	0	0
OCT	0	0	0	0	0	0	0	0
NOV	0	0	0	0	0	0	0	0
DEC	0	0	0	0	0	0	0	0
TOTALS	791	1420	792	785	907	891	1	5586
% of Total	14.16	25.42	14.18	14.05	16.24	15.95	0.02	

2008 YEAR-TO-DATE COMPARISON OF BANKRUPTCY CASE FILINGS
BY JUDGE/CHAPTER

	CH 7	CH 11	CH 12	CH 13	CH 15	TOTAL
AJC	594	16	0	181	0	791
PGH	1011	18	0	391	0	1420
LMI	600	7	1	183	1	792
RAM	593	9	0	183	0	785
JKO	573	47	0	287	0	906
RBR	571	38	0	282	0	891
DHA	1	0	0	0	0	1
TOTALS	3942	135	1	1507	1	5585

CALENDAR YEAR-TO-DATE COMPARISON

	ENDING APR 08	ENDING APR 07	PERCENT CHANGE
Bankruptcy Case Filings	5,585	3,229	72.96
Bankruptcy Case Closings	5,521	4,585	20.41
Adversary Filings	309	218	41.74
Adversary Closings	329	393	-16.28

12-MONTH/THREE YEAR COMPARISON

	ENDING APR 08	ENDING APR 07	ENDING APR 06	% CHANGE 2008 / 2007	% CHANGE 2008 / 2006
Bankruptcy Case Filings	14,111	8,595	28,846	64.18	-51.08
Bankruptcy Case Closings	15,014	15,045	34,914	-0.21	-57.00
Adversary Filings	992	941	1,446	5.42	-31.40
Adversary Closings	933	1,241	1,340	-24.82	-30.37

MONTHLY COMPARISON

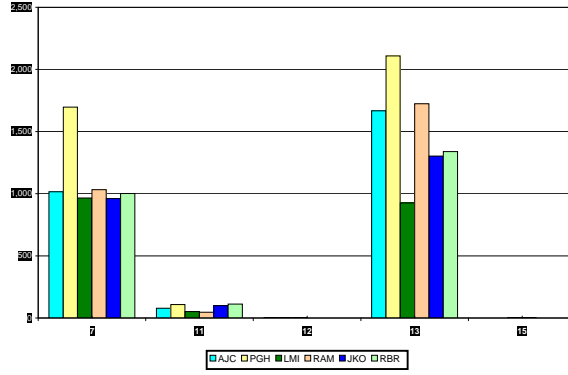
	APR 08	APR 07	PERCENT CHANGE
Bankruptcy Case Filings	1,601	918	74.40
Bankruptcy Case Closings	1,347	1,209	11.41
Adversary Filings	56	44	27.27
Adversary Closings	70	95	-26.32

Filings and Closings for Dade Division includes Monroe County

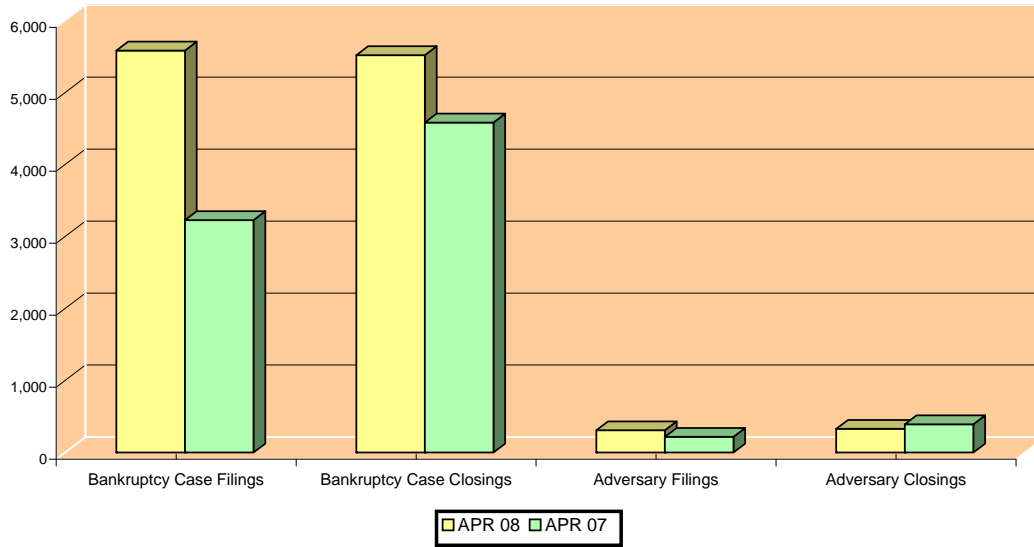
Filings and Closings for Palm Beach Division includes Indian River, Highlands, Martin,

St. Lucie & Okeechobee Counties

TOTAL PENDING CASELOAD BY JUDGE/CHAPTER



CALENDAR YEAR-TO-DATE COMPARISON



12-MONTH/THREE YEAR COMPARISON

