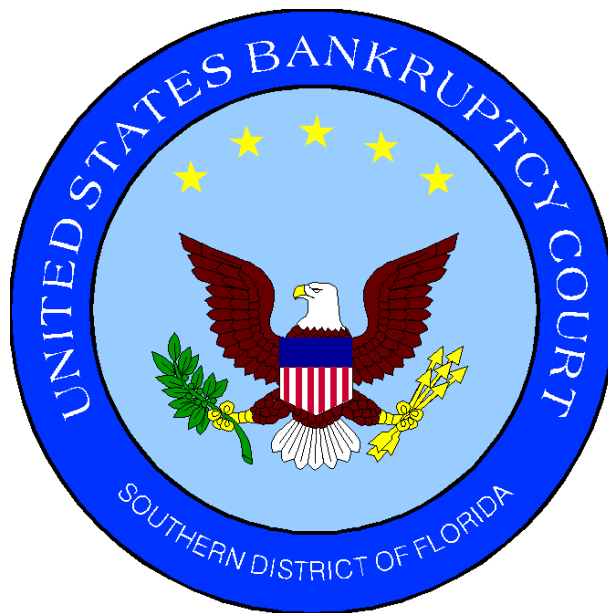


# UNITED STATES BANKRUPTCY COURT

## *SOUTHERN DISTRICT OF FLORIDA*

*51 S.W. 1st Avenue  
Room 1401  
Miami, FL 33130*

*Katherine Gould-Feldman  
Clerk of Court*



## MONTHLY STATISTICAL REPORT

**February 2008**

# **MONTHLY STATISTICAL REPORT**

## **TABLE OF CONTENTS**

	<i>page</i>
<i>I. MONTHLY SARD SUMMARY REPORT</i>	<i>2</i>
<i>II. BK CASE FILINGS SUMMARY REPORT</i>	<i>3</i>
<i>III. BK CASE CLOSINGS SUMMARY REPORT</i>	<i>4</i>
<i>IV. AP CASE FILINGS SUMMARY REPORT</i>	<i>3</i>
<i>V. AP CASE CLOSINGS SUMMARY REPORT</i>	<i>4</i>
<i>VI. BK PRO SE CASES FILING SUMMARY REPORT</i>	<i>5</i>
<i>VII. PENDING CASELOAD REPORT BY JUDGE/CHAPTER</i>	<i>6</i>
<i>VIII. DIVISIONAL CASELOAD REPORT</i>	<i>7</i>
<i>IX. CASE FILING BREAKDOWN BY COUNTY</i>	<i>8</i>
<i>X. BREAKDOWN BY NATURE OF DEBTOR</i>	<i>9</i>
<i>XI. BREAKDOWN BY COUNTY / NATURE - CONSUMER</i>	<i>10</i>
<i>XII. BREAKDOWN BY COUNTY / NATURE - BUSINESS</i>	<i>11</i>
<i>XIII. SUMMARIES AND GRAPHS</i>	<i>12 - 16</i>

**FEBRUARY 2008  
MONTHLY SARD REPORT SUMMARY**

2

**I. BC101 REPORT OF BANKRUPTCY CASES**

	AJC	LMI	RAM	JKO	RBR	PGH	DHA	TOTAL
Pending Prior Month	2,775	1,822	2,838	2,175	2,337	3,689	0	15,636
Cases Filed	184	186	180	196	194	329	0	1,269
Reopened	4	6	8	4	8	6	0	36
Split Cases	0	0	0	1	0	0	0	1
Trans. In	0	0	1	0	0	0	0	1
Reassigned To	0	0	0	0	0	0	2	2
Trans. Out	0	0	0	2	0	0	0	2
Reassigned From	0	0	0	0	0	2	0	2
Cases Closed	240	183	233	175	194	297	0	1,322
Cases Pending	2,723	1,831	2,794	2,199	2,345	3,725	2	15,619

**II. BC109 REPORT OF ADVERSARY CASES**

	AJC	LMI	RAM	JKO	RBR	PGH	DHA	TOTAL
Pending Prior Month	141	37	37	149	143	84	0	591
Cases Filed	6	25	2	8	10	12	0	63
Trans. In	0	0	0	0	0	0	0	0
Reassigned To	0	0	0	0	0	0	0	0
Cases Reopened	0	0	0	1	0	2	0	3
Cases Closed	17	2	6	6	25	4	0	60
Trans. Out	0	0	0	0	0	0	0	0
Reassigned From	0	0	0	0	0	0	0	0
Cases Pending	130	60	33	152	128	94	0	597

**IV. MONTHLY REPORT OF TRIALS AND OTHER ACTIVITY**

	Contested Proceedings	Miscellaneous Proceedings	Total Hours in Court
AJC	7	27	34
PGH	9	22	31
LMI	15	12	27
RAM	9	18	27
JKO	7	25	32
RBR	8	17	25
DHA	0	0	0
<b>Total</b>	55	121	176

Cases Summary Report Group By Person Office  
New Filed: 2/1/2008 - 2/29/2008

3

Judge	Office	Ch7	Ch9	Ch11	Ch12	Ch13	Ch15	304	Total	Adv	Mis
AJC	Miami	140	0	1	0	43	0	0	184	6	0
LMI	Miami	141	0	3	1	41	0	0	186	25	0
RAM	Miami	136	0	4	0	40	0	0	180	2	0
JKO	Broward	129	0	0	0	67	0	0	196	8	0
RBR	Broward	129	0	3	0	62	0	0	194	10	0
PGH	WPB	234	0	3	0	92	0	0	329	12	0
Total		909	0	14	1	345	0	0	1269	63	0

Cases Summary Report Group By Person Office  
Closed: 2/1/2008 - 2/29/2008

4

Judge	Office	Ch7	Ch9	Ch11	Ch12	Ch13	Ch15	304	Total	Adv	Mis
AJC	Miami	122	0	3	0	115	0	0	240	17	0
LMI	Miami	118	0	0	0	65	0	0	183	2	0
RAM	Miami	102	0	0	0	131	0	0	233	6	0
JKO	Broward	122	0	0	0	53	0	0	175	6	0
RBR	Broward	133	0	3	0	58	0	0	194	25	0
PGH	WPB	209	0	1	0	87	0	0	297	4	0
Total		806	0	7	0	509	0	0	1322	60	0

Cases Summary Report Group By Person Office  
Pro Se: 02/01/2008 - 02/29/2008

5

Judge	Office	Ch7	Ch9	Ch11	Ch12	Ch13	Ch15	304	Total	Adv	Mis
AJC	Miami	4	0	0	0	5	0	0	9	0	0
LMI	Miami	2	0	1	0	8	0	0	11	0	0
RAM	Miami	5	0	0	0	6	0	0	11	0	0
JKO	Broward	13	0	0	0	4	0	0	17	0	0
RBR	Broward	10	0	0	0	6	0	0	16	0	0
PGH	WPB	18	0	0	0	8	0	0	26	1	0
Total		52	0	1	0	37	0	0	90	1	0

**PENDING CASELOAD REPORTS BY JUDGE/CHAPTER**  
**FEBRUARY 2008**

AJC	7	11	12	13	15	304	TOTALS
Pending Prior Month	861	75	1	1,834	0	4	2,775
Cases Filed	140	1	0	43	0	0	184
Reopened	2	0	0	2	0	0	4
Split Cases	0	0	0	0	0	0	0
Transferred In	0	0	0	0	0	0	0
Reassigned To	0	0	0	0	0	0	0
Converted To	3	0	0	2	0	0	5
Transferred Out	0	0	0	0	0	0	0
Reassigned From	0	0	0	0	0	0	0
Converted From	2	0	0	3	0	0	5
Cases Closed	122	3	0	115	0	0	240
<b>Total Pending</b>	<b>882</b>	<b>73</b>	<b>1</b>	<b>1,763</b>	<b>0</b>	<b>4</b>	<b>2,723</b>

PGH	7	11	12	13	15	304	TOTALS
Pending Prior Month	1,508	117	1	2,063	0	0	3,689
Cases Filed	234	3	0	92	0	0	329
Reopened	5	0	0	1	0	0	6
Split Cases	0	0	0	0	0	0	0
Transferred In	0	0	0	0	0	0	0
Reassigned To	0	0	0	0	0	0	0
Converted To	10	0	0	2	0	0	12
Transferred Out	0	0	0	0	0	0	0
Reassigned From	2	0	0	0	0	0	2
Converted From	2	0	0	10	0	0	12
Cases Closed	209	1	0	87	0	0	297
<b>Total Pending</b>	<b>1,544</b>	<b>119</b>	<b>1</b>	<b>2,061</b>	<b>0</b>	<b>0</b>	<b>3,725</b>

LMI	7	11	12	13	15	304	TOTALS
Pending Prior Month	816	52	0	952	2	0	1,822
Cases Filed	141	3	1	41	0	0	186
Reopened	5	0	0	1	0	0	6
Split Cases	0	0	0	0	0	0	0
Transferred In	0	0	0	0	0	0	0
Reassigned To	0	0	0	0	0	0	0
Converted To	2	0	0	1	0	0	3
Transferred Out	0	0	0	0	0	0	0
Reassigned From	0	0	0	0	0	0	0
Converted From	1	1	0	1	0	0	3
Cases Closed	118	0	0	65	0	0	183
<b>Total Pending</b>	<b>845</b>	<b>54</b>	<b>1</b>	<b>929</b>	<b>2</b>	<b>0</b>	<b>1,831</b>

RAM	7	11	12	13	15	304	TOTALS
Pending Prior Month	865	57	0	1,913	1	2	2,838
Cases Filed	136	4	0	40	0	0	180
Reopened	7	0	0	1	0	0	8
Split Cases	0	0	0	0	0	0	0
Transferred In	1	0	0	0	0	0	1
Reassigned To	0	0	0	0	0	0	0
Converted To	6	0	0	0	0	0	6
Transferred Out	0	0	0	0	0	0	0
Reassigned From	0	0	0	0	0	0	0
Converted From	0	0	0	6	0	0	6
Cases Closed	102	0	0	131	0	0	233
<b>Total Pending</b>	<b>913</b>	<b>61</b>	<b>0</b>	<b>1,817</b>	<b>1</b>	<b>2</b>	<b>2,794</b>

JKO	7	11	12	13	15	304	TOTALS
Pending Prior Month	837	93	0	1,245	0	0	2,175
Cases Filed	129	0	0	67	0	0	196
Reopened	3	0	0	1	0	0	4
Split Cases	0	0	0	1	0	0	1
Transferred In	0	0	0	0	0	0	0
Reassigned To	0	0	0	0	0	0	0
Converted To	8	0	0	4	0	0	12
Transferred Out	1	0	0	1	0	0	2
Reassigned From	0	0	0	0	0	0	0
Converted From	4	0	0	8	0	0	12
Cases Closed	122	0	0	53	0	0	175
<b>Total Pending</b>	<b>850</b>	<b>93</b>	<b>0</b>	<b>1,256</b>	<b>0</b>	<b>0</b>	<b>2,199</b>

RBR	7	11	12	13	15	304	TOTALS
Pending Prior Month	917	108	0	1,312	0	0	2,337
Cases Filed	129	3	0	62	0	0	194
Reopened	8	0	0	0	0	0	8
Split Cases	0	0	0	0	0	0	0
Transferred In	0	0	0	0	0	0	0
Reassigned To	0	0	0	0	0	0	0
Converted To	3	0	0	0	0	0	3
Transferred Out	0	0	0	0	0	0	0
Reassigned From	0	0	0	0	0	0	0
Converted From	0	0	0	3	0	0	3
Cases Closed	133	3	0	58	0	0	194
<b>Total Pending</b>	<b>924</b>	<b>108</b>	<b>0</b>	<b>1,313</b>	<b>0</b>	<b>0</b>	<b>2,345</b>

DHA	7	11	12	13	15	304	TOTALS
Pending Prior Month	0	0	0	0	0	0	0
Cases Filed	0	0	0	0	0	0	0
Reopened	0	0	0	0	0	0	0
Split Cases	0	0	0	0	0	0	0
Transferred In	0	0	0	0	0	0	0
Reassigned To	2	0	0	0	0	0	2
Converted To	0	0	0	0	0	0	0
Transferred Out	0	0	0	0	0	0	0
Reassigned From	0	0	0	0	0	0	0
Converted From	0	0	0	0	0	0	0
Cases Closed	0	0	0	0	0	0	0
<b>Total Pending</b>	<b>2</b>	<b>0</b>	<b>0</b>	<b>0</b>	<b>0</b>	<b>0</b>	<b>2</b>

<b>GRAND TOTAL:</b>	<b>5,960</b>	<b>508</b>	<b>3</b>	<b>9,139</b>	<b>3</b>	<b>6</b>	<b>15,619</b>
---------------------	--------------	------------	----------	--------------	----------	----------	---------------

**AJC PENDING CASE SUMMARY**

CHAPTER	DADE DIVISION	BROWARD DIVISION	PALM BEACH DIVISION	TOTAL
7	882	0	0	882
11	73	0	0	73
12	1	0	0	1
13	1,763	0	0	1,763
15	0	0	0	0
304	4	0	0	4
<b>TOTALS</b>	<b>2,723</b>	<b>0</b>	<b>0</b>	<b>2,723</b>

**LMI PENDING CASE SUMMARY**

CHAPTER	DADE DIVISION	BROWARD DIVISION	PALM BEACH DIVISION	TOTAL
7	845	0	0	845
11	54	0	0	54
12	1	0	0	1
13	929	0	0	929
15	2	0	0	2
304	0	0	0	0
<b>TOTALS</b>	<b>1,831</b>	<b>0</b>	<b>0</b>	<b>1,831</b>

**PGH PENDING CASE SUMMARY**

CHAPTER	DADE DIVISION	BROWARD DIVISION	PALM BEACH DIVISION	TOTAL
7	0	2	1,542	1,544
11	1	1	117	119
12	0	0	1	1
13	0	0	2,061	2,061
15	0	0	0	0
304	0	0	0	0
<b>TOTALS</b>	<b>1</b>	<b>3</b>	<b>3,721</b>	<b>3,725</b>

**RAM PENDING CASE SUMMARY**

CHAPTER	DADE DIVISION	BROWARD DIVISION	PALM BEACH DIVISION	TOTAL
7	911	0	2	913
11	60	0	1	61
12	0	0	0	0
13	1,817	0	0	1,817
15	1	0	0	1
304	2	0	0	2
<b>TOTALS</b>	<b>2,791</b>	<b>0</b>	<b>3</b>	<b>2,794</b>

**JKO PENDING CASE SUMMARY**

CHAPTER	DADE DIVISION	BROWARD DIVISION	PALM BEACH DIVISION	TOTAL
7	0	847	3	850
11	1	92	0	93
12	0	0	0	0
13	0	1,256	0	1,256
15	0	0	0	0
304	0	0	0	0
<b>TOTALS</b>	<b>1</b>	<b>2,195</b>	<b>3</b>	<b>2,199</b>

**RBR PENDING CASE SUMMARY**

CHAPTER	DADE DIVISION	BROWARD DIVISION	PALM BEACH DIVISION	TOTAL
7	2	920	2	924
11	0	107	1	108
12	0	0	0	0
13	0	1,313	0	1,313
15	0	0	0	0
304	0	0	0	0
<b>TOTALS</b>	<b>2</b>	<b>2,340</b>	<b>3</b>	<b>2,345</b>

**DHA PENDING CASE SUMMARY**

CHAPTER	DADE DIVISION	BROWARD DIVISION	PALM BEACH DIVISION	TOTAL
7	0	0	2	2
11	0	0	0	0
12	0	0	0	0
13	0	0	0	0
15	0	0	0	0
304	0	0	0	0
<b>TOTALS</b>	<b>0</b>	<b>0</b>	<b>2</b>	<b>2</b>

<b>DISTRICT TOTALS</b>	<b>7,349</b>	<b>4,538</b>	<b>3,732</b>	<b>15,619</b>
------------------------	--------------	--------------	--------------	---------------



CASE FILING SUMMARY BY COUNTY

DADE COUNTY - 12025

	7	11	12	13	15	TOTAL
AJC	137	1	0	42	0	180
PGH	0	0	0	0	0	0
LMI	138	3	1	41	0	183
RAM	133	4	0	40	0	177
JKO	0	0	0	0	0	0
RBR	0	0	0	0	0	0
<b>Sub-Total</b>	<b>408</b>	<b>8</b>	<b>1</b>	<b>123</b>	<b>0</b>	<b>540</b>

MONROE COUNTY - 12087

	7	11	12	13	15	TOTAL
AJC	3	0	0	1	0	4
PGH	0	0	0	0	0	0
LMI	3	0	0	0	0	3
RAM	3	0	0	0	0	3
JKO	0	0	0	0	0	0
RBR	0	0	0	0	0	0
<b>Sub-Total</b>	<b>9</b>	<b>0</b>	<b>0</b>	<b>1</b>	<b>0</b>	<b>10</b>
						<b>Division Total</b> 550

BROWARD COUNTY - 12011

	7	11	12	13	15	TOTAL
AJC	0	0	0	0	0	0
PGH	0	0	0	0	0	0
LMI	0	0	0	0	0	0
RAM	0	0	0	0	0	0
JKO	129	0	0	68	0	197
RBR	129	3	0	62	0	194
<b>Sub-Total</b>	<b>258</b>	<b>3</b>	<b>0</b>	<b>130</b>	<b>0</b>	<b>391</b>
						<b>Division Total</b> 391

HIGHLANDS COUNTY - 12055

	7	11	12	13	15	TOTAL
AJC	0	0	0	0	0	0
PGH	5	0	0	4	0	9
LMI	0	0	0	0	0	0
RAM	0	0	0	0	0	0
JKO	0	0	0	0	0	0
RBR	0	0	0	0	0	0
<b>Sub-Total</b>	<b>5</b>	<b>0</b>	<b>0</b>	<b>4</b>	<b>0</b>	<b>9</b>

INDIAN RIVER COUNTY - 12061

	7	11	12	13	15	TOTAL
AJC	0	0	0	0	0	0
PGH	14	0	0	3	0	17
LMI	0	0	0	0	0	0
RAM	0	0	0	0	0	0
JKO	0	0	0	0	0	0
RBR	0	0	0	0	0	0
<b>Sub-Total</b>	<b>14</b>	<b>0</b>	<b>0</b>	<b>3</b>	<b>0</b>	<b>17</b>

MARTIN COUNTY - 12085

	7	11	12	13	15	TOTAL
AJC	0	0	0	0	0	0
PGH	22	0	0	6	0	28
LMI	0	0	0	0	0	0
RAM	0	0	0	0	0	0
JKO	0	0	0	0	0	0
RBR	0	0	0	0	0	0
<b>Sub-Total</b>	<b>22</b>	<b>0</b>	<b>0</b>	<b>6</b>	<b>0</b>	<b>28</b>

OKEECHOBEE COUNTY - 12093

	7	11	12	13	15	TOTAL
AJC	0	0	0	0	0	0
PGH	7	0	0	2	0	9
LMI	0	0	0	0	0	0
RAM	0	0	0	0	0	0
JKO	0	0	0	0	0	0
RBR	0	0	0	0	0	0
<b>Sub-Total</b>	<b>7</b>	<b>0</b>	<b>0</b>	<b>2</b>	<b>0</b>	<b>9</b>

PALM BEACH COUNTY - 12099

	7	11	12	13	15	TOTAL
AJC	0	0	0	0	0	0
PGH	129	3	0	53	0	185
LMI	0	0	0	0	0	0
RAM	0	0	0	0	0	0
JKO	0	0	0	0	0	0
RBR	0	0	0	0	0	0
<b>Sub-Total</b>	<b>129</b>	<b>3</b>	<b>0</b>	<b>53</b>	<b>0</b>	<b>185</b>

ST. LUCIE - 12111

	7	11	12	13	15	TOTAL
AJC	0	0	0	0	0	0
PGH	57	0	0	24	0	81
LMI	0	0	0	0	0	0
RAM	0	0	0	0	0	0
JKO	0	0	0	0	0	0
RBR	0	0	0	0	0	0
<b>Sub-Total</b>	<b>57</b>	<b>0</b>	<b>0</b>	<b>24</b>	<b>0</b>	<b>81</b>
						<b>Division Total</b> 329

<b>GRAND TOTAL</b>	<b>909</b>	<b>14</b>	<b>1</b>	<b>346</b>	<b>0</b>	<b>1270</b>
--------------------	------------	-----------	----------	------------	----------	-------------

**FEBRUARY 2008  
CASE FILING SUMMARY BY NATURE OF DEBTOR/DIVISION**

CHAPTER	BUSINESS				CONSUMER				TOTAL
	DADE	BROWARD	PALM BCH	DIV. TOTAL	DADE	BROWARD	PALM BCH	DIV. TOTAL	
7	35	10	21	66	382	248	213	843	909
11	8	3	3	14	0	0	0	0	14
12	1	0	0	1	0	0	0	0	1
13	1	1	3	5	123	129	89	341	346
15	0	0	0	0	0	0	0	0	0
<b>TOTAL</b>	<b>45</b>	<b>14</b>	<b>27</b>	<b>86</b>	<b>505</b>	<b>377</b>	<b>302</b>	<b>1184</b>	<b>1270</b>

**DIVISIONAL BUSINESS CASE FILING SUMMARY**

**DADE DIVISION**

CHAPTER	AJC	PGH	LMI	RAM	JKO	RBR	TOTAL
7	8	0	16	11	0	0	35
11	1	0	3	4	0	0	8
12	0	0	1	0	0	0	1
13	0	0	1	0	0	0	1
15	0	0	0	0	0	0	0
<b>Sub-Total</b>	<b>9</b>	<b>0</b>	<b>21</b>	<b>15</b>	<b>0</b>	<b>0</b>	<b>45</b>

**BROWARD DIVISION**

CHAPTER	AJC	PGH	LMI	RAM	JKO	RBR	TOTAL
7	0	0	0	0	5	5	10
11	0	0	0	0	0	3	3
12	0	0	0	0	0	0	0
13	0	0	0	0	0	1	1
15	0	0	0	0	0	0	0
<b>Sub-Total</b>	<b>0</b>	<b>0</b>	<b>0</b>	<b>0</b>	<b>5</b>	<b>9</b>	<b>14</b>

**PALM BEACH DIVISION**

CHAPTER	AJC	PGH	LMI	RAM	JKO	RBR	TOTAL
7	0	21	0	0	0	0	21
11	0	3	0	0	0	0	3
12	0	0	0	0	0	0	0
13	0	3	0	0	0	0	3
15	0	0	0	0	0	0	0
<b>Sub-Total</b>	<b>0</b>	<b>27</b>	<b>0</b>	<b>0</b>	<b>0</b>	<b>0</b>	<b>27</b>
<b>GRAND TOTAL</b>	<b>9</b>	<b>27</b>	<b>21</b>	<b>15</b>	<b>5</b>	<b>9</b>	<b>86</b>

**DIVISIONAL CONSUMER CASE FILING SUMMARY**

**DADE DIVISION**

CHAPTER	AJC	PGH	LMI	RAM	JKO	RBR	TOTAL
7	132	0	125	125	0	0	382
11	0	0	0	0	0	0	0
12	0	0	0	0	0	0	0
13	43	0	40	40	0	0	123
15	0	0	0	0	0	0	0
<b>Sub-Total</b>	<b>175</b>	<b>0</b>	<b>165</b>	<b>165</b>	<b>0</b>	<b>0</b>	<b>505</b>

**BROWARD DIVISION**

CHAPTER	AJC	PGH	LMI	RAM	JKO	RBR	TOTAL
7	0	0	0	0	124	124	248
11	0	0	0	0	0	0	0
12	0	0	0	0	0	0	0
13	0	0	0	0	68	61	129
15	0	0	0	0	0	0	0
<b>Sub-Total</b>	<b>0</b>	<b>0</b>	<b>0</b>	<b>0</b>	<b>192</b>	<b>185</b>	<b>377</b>

**PALM BEACH DIVISION**

CHAPTER	AJC	PGH	LMI	RAM	JKO	RBR	TOTAL
7	0	213	0	0	0	0	213
11	0	0	0	0	0	0	0
12	0	0	0	0	0	0	0
13	0	89	0	0	0	0	89
15	0	0	0	0	0	0	0
<b>Sub-Total</b>	<b>0</b>	<b>302</b>	<b>0</b>	<b>0</b>	<b>0</b>	<b>0</b>	<b>302</b>
<b>GRAND TOTAL</b>	<b>175</b>	<b>302</b>	<b>165</b>	<b>165</b>	<b>192</b>	<b>185</b>	<b>1,184</b>

CASE FILING SUMMARY BY COUNTY / CONSUMER - BUSINESS

CONSUMERS

DADE COUNTY - 12025

	7	11	12	13	15	TOTAL
AJC	129	0	0	42	0	171
PGH	0	0	0	0	0	0
LMI	122	0	0	40	0	162
RAM	122	0	0	40	0	162
JKO	0	0	0	0	0	0
RBR	0	0	0	0	0	0
<b>Sub-Total</b>	<b>373</b>	<b>0</b>	<b>0</b>	<b>122</b>	<b>0</b>	<b>495</b>

MONROE COUNTY - 12087

	7	11	12	13	15	TOTAL
AJC	3	0	0	1	0	4
PGH	0	0	0	0	0	0
LMI	3	0	0	0	0	3
RAM	3	0	0	0	0	3
JKO	0	0	0	0	0	0
RBR	0	0	0	0	0	0
<b>Sub-Total</b>	<b>9</b>	<b>0</b>	<b>0</b>	<b>1</b>	<b>0</b>	<b>10</b>

Division Total 505

BROWARD COUNTY - 12011

	7	11	12	13	15	TOTAL
AJC	0	0	0	0	0	0
PGH	0	0	0	0	0	0
LMI	0	0	0	0	0	0
RAM	0	0	0	0	0	0
JKO	124	0	0	68	0	192
RBR	124	0	0	61	0	185
<b>Sub-Total</b>	<b>248</b>	<b>0</b>	<b>0</b>	<b>129</b>	<b>0</b>	<b>377</b>

Division Total 377

HIGHLANDS COUNTY - 12055

	7	11	12	13	15	TOTAL
AJC	0	0	0	0	0	0
PGH	5	0	0	4	0	9
LMI	0	0	0	0	0	0
RAM	0	0	0	0	0	0
JKO	0	0	0	0	0	0
RBR	0	0	0	0	0	0
<b>Sub-Total</b>	<b>5</b>	<b>0</b>	<b>0</b>	<b>4</b>	<b>0</b>	<b>9</b>

INDIAN RIVER COUNTY - 12061

	7	11	12	13	15	TOTAL
AJC	0	0	0	0	0	0
PGH	14	0	0	3	0	17
LMI	0	0	0	0	0	0
RAM	0	0	0	0	0	0
JKO	0	0	0	0	0	0
RBR	0	0	0	0	0	0
<b>Sub-Total</b>	<b>14</b>	<b>0</b>	<b>0</b>	<b>3</b>	<b>0</b>	<b>17</b>

MARTIN COUNTY - 12085

	7	11	12	13	15	TOTAL
AJC	0	0	0	0	0	0
PGH	18	0	0	6	0	24
LMI	0	0	0	0	0	0
RAM	0	0	0	0	0	0
JKO	0	0	0	0	0	0
RBR	0	0	0	0	0	0
<b>Sub-Total</b>	<b>18</b>	<b>0</b>	<b>0</b>	<b>6</b>	<b>0</b>	<b>24</b>

OKEECHOBEE COUNTY - 12093

	7	11	12	13	15	TOTAL
AJC	0	0	0	0	0	0
PGH	6	0	0	2	0	8
LMI	0	0	0	0	0	0
RAM	0	0	0	0	0	0
JKO	0	0	0	0	0	0
RBR	0	0	0	0	0	0
<b>Sub-Total</b>	<b>6</b>	<b>0</b>	<b>0</b>	<b>2</b>	<b>0</b>	<b>8</b>

PALM BEACH COUNTY - 12099

	7	11	12	13	15	TOTAL
AJC	0	0	0	0	0	0
PGH	116	0	0	51	0	167
LMI	0	0	0	0	0	0
RAM	0	0	0	0	0	0
JKO	0	0	0	0	0	0
RBR	0	0	0	0	0	0
<b>Sub-Total</b>	<b>116</b>	<b>0</b>	<b>0</b>	<b>51</b>	<b>0</b>	<b>167</b>

ST. LUCIE - 12111

	7	11	12	13	15	TOTAL
AJC	0	0	0	0	0	0
PGH	54	0	0	23	0	77
LMI	0	0	0	0	0	0
RAM	0	0	0	0	0	0
JKO	0	0	0	0	0	0
RBR	0	0	0	0	0	0
<b>Sub-Total</b>	<b>54</b>	<b>0</b>	<b>0</b>	<b>23</b>	<b>0</b>	<b>77</b>

Division Total 302

<b>GRAND TOTAL</b>	<b>843</b>	<b>0</b>	<b>0</b>	<b>341</b>	<b>0</b>	<b>1184</b>
--------------------	------------	----------	----------	------------	----------	-------------

CASE FILING SUMMARY BY COUNTY / CONSUMER - BUSINESS

BUSINESS

DADE COUNTY - 12025

	7	11	12	13	15	TOTAL
AJC	8	1	0	0	0	9
PGH	0	0	0	0	0	0
LMI	16	3	1	1	0	21
RAM	11	4	0	0	0	15
JKO	0	0	0	0	0	0
RBR	0	0	0	0	0	0
<b>Sub-Total</b>	<b>35</b>	<b>8</b>	<b>1</b>	<b>1</b>	<b>0</b>	<b>45</b>

MONROE COUNTY - 12087

	7	11	12	13	15	TOTAL
AJC	0	0	0	0	0	0
PGH	0	0	0	0	0	0
LMI	0	0	0	0	0	0
RAM	0	0	0	0	0	0
JKO	0	0	0	0	0	0
RBR	0	0	0	0	0	0
<b>Sub-Total</b>	<b>0</b>	<b>0</b>	<b>0</b>	<b>0</b>	<b>0</b>	<b>0</b>

Division Total 45

BROWARD COUNTY - 12011

	7	11	12	13	15	TOTAL
AJC	0	0	0	0	0	0
PGH	0	0	0	0	0	0
LMI	0	0	0	0	0	0
RAM	0	0	0	0	0	0
JKO	5	0	0	0	0	5
RBR	5	3	0	1	0	9
<b>Sub-Total</b>	<b>10</b>	<b>3</b>	<b>0</b>	<b>1</b>	<b>0</b>	<b>14</b>

Division Total 14

HIGHLANDS COUNTY - 12055

	7	11	12	13	15	TOTAL
AJC	0	0	0	0	0	0
PGH	0	0	0	0	0	0
LMI	0	0	0	0	0	0
RAM	0	0	0	0	0	0
JKO	0	0	0	0	0	0
RBR	0	0	0	0	0	0
<b>Sub-Total</b>	<b>0</b>	<b>0</b>	<b>0</b>	<b>0</b>	<b>0</b>	<b>0</b>

INDIAN RIVER COUNTY - 12061

	7	11	12	13	15	TOTAL
AJC	0	0	0	0	0	0
PGH	0	0	0	0	0	0
LMI	0	0	0	0	0	0
RAM	0	0	0	0	0	0
JKO	0	0	0	0	0	0
RBR	0	0	0	0	0	0
<b>Sub-Total</b>	<b>0</b>	<b>0</b>	<b>0</b>	<b>0</b>	<b>0</b>	<b>0</b>

MARTIN COUNTY - 12085

	7	11	12	13	15	TOTAL
AJC	0	0	0	0	0	0
PGH	4	0	0	0	0	4
LMI	0	0	0	0	0	0
RAM	0	0	0	0	0	0
JKO	0	0	0	0	0	0
RBR	0	0	0	0	0	0
<b>Sub-Total</b>	<b>4</b>	<b>0</b>	<b>0</b>	<b>0</b>	<b>0</b>	<b>4</b>

OKEECHOBEE COUNTY - 12093

	7	11	12	13	15	TOTAL
AJC	0	0	0	0	0	0
PGH	1	0	0	0	0	1
LMI	0	0	0	0	0	0
RAM	0	0	0	0	0	0
JKO	0	0	0	0	0	0
RBR	0	0	0	0	0	0
<b>Sub-Total</b>	<b>1</b>	<b>0</b>	<b>0</b>	<b>0</b>	<b>0</b>	<b>1</b>

PALM BEACH COUNTY - 12099

	7	11	12	13	15	TOTAL
AJC	0	0	0	0	0	0
PGH	13	3	0	2	0	18
LMI	0	0	0	0	0	0
RAM	0	0	0	0	0	0
JKO	0	0	0	0	0	0
RBR	0	0	0	0	0	0
<b>Sub-Total</b>	<b>13</b>	<b>3</b>	<b>0</b>	<b>2</b>	<b>0</b>	<b>18</b>

ST. LUCIE - 12111

	7	11	12	13	15	TOTAL
AJC	0	0	0	0	0	0
PGH	3	0	0	1	0	4
LMI	0	0	0	0	0	0
RAM	0	0	0	0	0	0
JKO	0	0	0	0	0	0
RBR	0	0	0	0	0	0
<b>Sub-Total</b>	<b>3</b>	<b>0</b>	<b>0</b>	<b>1</b>	<b>0</b>	<b>4</b>

Division Total 27

<b>GRAND TOTAL</b>	<b>66</b>	<b>14</b>	<b>1</b>	<b>5</b>	<b>0</b>	<b>86</b>
--------------------	-----------	-----------	----------	----------	----------	-----------

2008 COMPARISON OF BANKRUPTCY FILINGS

AJC	CH 7	CH 11	CH 12	CH 13	CH 15	TOTAL
JAN	118	10	0	39	0	167
FEB	140	1	0	43	0	184
MAR	0	0	0	0	0	0
APR	0	0	0	0	0	0
MAY	0	0	0	0	0	0
JUN	0	0	0	0	0	0
JUL	0	0	0	0	0	0
AUG	0	0	0	0	0	0
SEP	0	0	0	0	0	0
OCT	0	0	0	0	0	0
NOV	0	0	0	0	0	0
DEC	0	0	0	0	0	0
<b>TOTALS</b>	<b>258</b>	<b>11</b>	<b>0</b>	<b>82</b>	<b>0</b>	<b>351</b>

PGH	CH 7	CH 11	CH 12	CH 13	CH 15	TOTAL
JAN	198	11	0	95	0	304
FEB	234	3	0	92	0	329
MAR	0	0	0	0	0	0
APR	0	0	0	0	0	0
MAY	0	0	0	0	0	0
JUN	0	0	0	0	0	0
JUL	0	0	0	0	0	0
AUG	0	0	0	0	0	0
SEP	0	0	0	0	0	0
OCT	0	0	0	0	0	0
NOV	0	0	0	0	0	0
DEC	0	0	0	0	0	0
<b>TOTALS</b>	<b>432</b>	<b>14</b>	<b>0</b>	<b>187</b>	<b>0</b>	<b>633</b>

LMI	CH 7	CH 11	CH 12	CH 13	CH 15	TOTAL
JAN	121	1	0	41	1	164
FEB	141	3	1	41	0	186
MAR	0	0	0	0	0	0
APR	0	0	0	0	0	0
MAY	0	0	0	0	0	0
JUN	0	0	0	0	0	0
JUL	0	0	0	0	0	0
AUG	0	0	0	0	0	0
SEP	0	0	0	0	0	0
OCT	0	0	0	0	0	0
NOV	0	0	0	0	0	0
DEC	0	0	0	0	0	0
<b>TOTALS</b>	<b>262</b>	<b>4</b>	<b>1</b>	<b>82</b>	<b>1</b>	<b>350</b>

RAM	CH 7	CH 11	CH 12	CH 13	CH 15	TOTAL
JAN	122	2	0	42	0	166
FEB	136	4	0	40	0	180
MAR	0	0	0	0	0	0
APR	0	0	0	0	0	0
MAY	0	0	0	0	0	0
JUN	0	0	0	0	0	0
JUL	0	0	0	0	0	0
AUG	0	0	0	0	0	0
SEP	0	0	0	0	0	0
OCT	0	0	0	0	0	0
NOV	0	0	0	0	0	0
DEC	0	0	0	0	0	0
<b>TOTALS</b>	<b>258</b>	<b>6</b>	<b>0</b>	<b>82</b>	<b>0</b>	<b>346</b>

JKO	CH 7	CH 11	CH 12	CH 13	CH 15	TOTAL
JAN	108	40	0	60	0	208
FEB	129	0	0	68	0	197
MAR	0	0	0	0	0	0
APR	0	0	0	0	0	0
MAY	0	0	0	0	0	0
JUN	0	0	0	0	0	0
JUL	0	0	0	0	0	0
AUG	0	0	0	0	0	0
SEP	0	0	0	0	0	0
OCT	0	0	0	0	0	0
NOV	0	0	0	0	0	0
DEC	0	0	0	0	0	0
<b>TOTALS</b>	<b>237</b>	<b>40</b>	<b>0</b>	<b>128</b>	<b>0</b>	<b>405</b>

RBR	CH 7	CH 11	CH 12	CH 13	CH 15	TOTAL
JAN	109	29	0	60	0	198
FEB	129	3	0	62	0	194
MAR	0	0	0	0	0	0
APR	0	0	0	0	0	0
MAY	0	0	0	0	0	0
JUN	0	0	0	0	0	0
JUL	0	0	0	0	0	0
AUG	0	0	0	0	0	0
SEP	0	0	0	0	0	0
OCT	0	0	0	0	0	0
NOV	0	0	0	0	0	0
DEC	0	0	0	0	0	0
<b>TOTALS</b>	<b>238</b>	<b>32</b>	<b>0</b>	<b>122</b>	<b>0</b>	<b>392</b>

**2008 YEAR-TO-DATE COMPARISON OF BANKRUPTCY CASE FILINGS  
BY JUDGE**

	AJC	PGH	LMI	RAM	JKO	RBR	TOTAL
JAN	167	304	164	166	208	198	1207
FEB	184	329	186	180	197	194	1270
MAR	0	0	0	0	0	0	0
APR	0	0	0	0	0	0	0
MAY	0	0	0	0	0	0	0
JUN	0	0	0	0	0	0	0
JUL	0	0	0	0	0	0	0
AUG	0	0	0	0	0	0	0
SEP	0	0	0	0	0	0	0
OCT	0	0	0	0	0	0	0
NOV	0	0	0	0	0	0	0
DEC	0	0	0	0	0	0	0
<b>TOTALS</b>	<b>351</b>	<b>633</b>	<b>350</b>	<b>346</b>	<b>405</b>	<b>392</b>	<b>2477</b>
<b>% of Total</b>	<b>14.17</b>	<b>25.56</b>	<b>14.13</b>	<b>13.97</b>	<b>16.35</b>	<b>15.83</b>	

**2008 YEAR-TO-DATE COMPARISON OF BANKRUPTCY CASE FILINGS  
BY JUDGE/CHAPTER**

	CH 7	CH 11	CH 12	CH 13	CH 15	TOTAL
AJC	258	11	0	82	0	351
PGH	432	14	0	187	0	633
LMI	262	4	1	82	1	350
RAM	258	6	0	82	0	346
JKO	237	40	0	128	0	405
RBR	238	32	0	122	0	392
<b>TOTALS</b>	<b>1685</b>	<b>107</b>	<b>1</b>	<b>683</b>	<b>1</b>	<b>2477</b>

### CALENDAR YEAR-TO-DATE COMPARISON

	ENDING FEB 08	ENDING FEB 07	PERCENT CHANGE
Bankruptcy Case Filings	2,477	1,372	80.54
Bankruptcy Case Closings	2,939	2,134	37.72
Adversary Filings	175	115	52.17
Adversary Closings	182	222	-18.02

### 12-MONTH/THREE YEAR COMPARISON

	ENDING FEB 08	ENDING FEB 07	ENDING FEB 06	% CHANGE 2008 / 2007	% CHANGE 2008 / 2006
Bankruptcy Case Filings	12,860	7,738	33,323	66.19	-61.41
Bankruptcy Case Closings	14,883	18,287	33,221	-18.61	-55.20
Adversary Filings	961	1,029	1,417	-6.61	-32.18
Adversary Closings	957	1,354	1,322	-29.32	-27.61

### MONTHLY COMPARISON

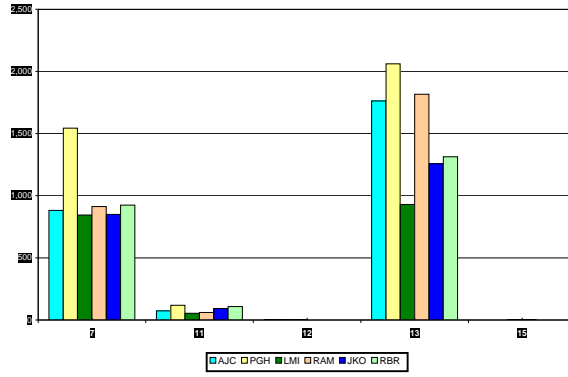
	FEB 08	FEB 07	PERCENT CHANGE
Bankruptcy Case Filings	1,270	700	81.43
Bankruptcy Case Closings	1,322	955	38.43
Adversary Filings	63	73	-13.70
Adversary Closings	60	117	-48.72

*Filings and Closings for Dade Division includes Monroe County*

*Filings and Closings for Palm Beach Division includes Indian River, Highlands, Martin,*

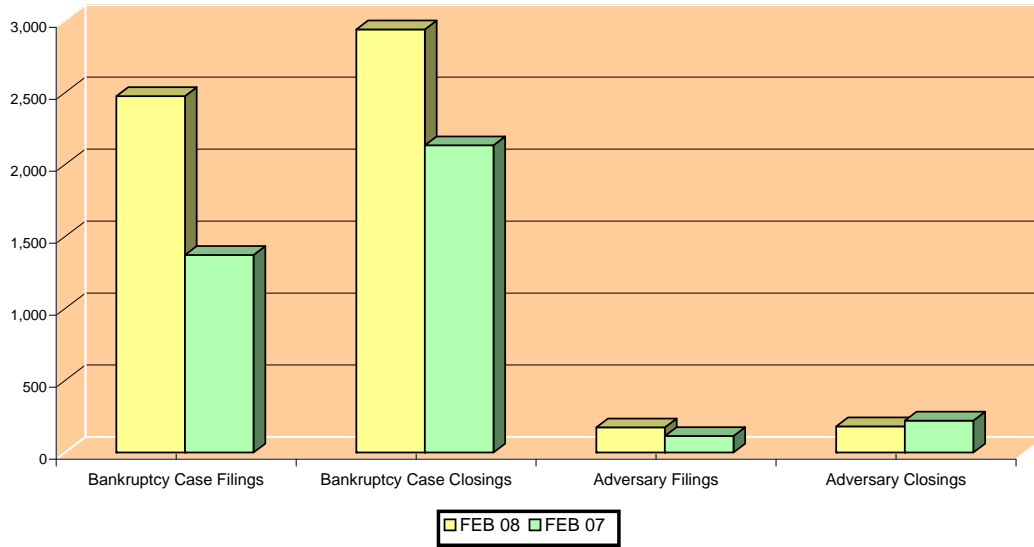
*St. Lucie & Okeechobee Counties*

TOTAL PENDING CASELOAD BY JUDGE/CHAPTER





CALENDAR YEAR-TO-DATE COMPARISON



12-MONTH/THREE YEAR COMPARISON

