

UNITED STATES BANKRUPTCY COURT

SOUTHERN DISTRICT OF FLORIDA

*51 S.W. 1st Avenue
Room 1401
Miami, FL 33130*

*Karen Eddy
Clerk of Court*



MONTHLY STATISTICAL REPORT
FEBRUARY 2005

MONTHLY STATISTICAL REPORT

TABLE OF CONTENTS

	<i>page</i>
<i>I. MONTHLY SARD SUMMARY REPORT</i>	<i>2</i>
<i>II. BK CASE FILINGS SUMMARY REPORT</i>	<i>3</i>
<i>III. BK CASE CLOSINGS SUMMARY REPORT</i>	<i>4</i>
<i>IV. AP CASE FILINGS SUMMARY REPORT</i>	<i>5</i>
<i>V. AP CASE CLOSINGS SUMMARY REPORT</i>	<i>6</i>
<i>VI. BK PRO SE CASES FILING SUMMARY REPORT</i>	<i>7</i>
<i>VII. PENDING CASELOAD REPORT BY JUDGE/CHAPTER</i>	<i>8</i>
<i>VIII. DIVISIONAL CASELOAD REPORT</i>	<i>9</i>
<i>IX. CASE FILING BREAKDOWN BY COUNTY</i>	<i>10</i>
<i>X. BREAKDOWN BY NATURE OF DEBTOR</i>	<i>11</i>
<i>XI. BREAKDOWN BY COUNTY / NATURE - CONSUMER</i>	<i>12</i>
<i>XII. BREAKDOWN BY COUNTY / NATURE - BUSINESS</i>	<i>13</i>
<i>XIII. SUMMARIES AND GRAPHS</i>	<i>14 - 18</i>

**FEBRUARY 2005
MONTHLY SARD REPORT SUMMARY**

I. BC101 REPORT OF BANKRUPTCY CASES

	AJC	SHF	PGH	RAM	RBR	TOTAL
Pending Prior Month	6,735	4,210	3,837	6,752	5,444	26,978
Cases Filed	324	312	300	329	350	1,615
Reopened	15	15	5	13	13	61
Split Cases	1	1	0	0	0	2
Trans. In	1	0	0	0	0	1
Reassigned To	0	0	1	0	1	2
Trans. Out	0	0	0	0	0	0
Reassigned From	0	0	1	0	1	2
Cases Closed	559	312	492	534	510	2,407
Cases Pending	6,517	4,226	3,650	6,560	5,297	26,250

II. BC109 REPORT OF ADVERSARY CASES

	AJC	SHF	PGH	RAM	RBR	TOTAL
Pending Prior Month	143	159	155	226	101	784
Cases Filed	33	11	14	13	18	89
Trans. In	0	0	0	0	0	0
Reassigned To	1	0	1	0	0	2
Cases Reopened	1	0	0	0	0	1
Cases Closed	12	24	20	45	24	125
Reassigned From	0	0	0	1	1	2
Cases Pending	166	146	150	193	94	749

IV. MONTHLY REPORT OF TRIALS AND OTHER ACTIVITY

	Contested Proceedings	Miscellaneous Proceedings	Total Hours in Court
AJC	4	44	48
SHF	0	36	36
PGH	0	14	14
RAM	14	34	48
RBR	3	27	30
Total	21	155	176

UNITED STATES BANKRUPTCY COURT
Southern District of Florida

CASE FILINGS SUMMARY REPORT
For Cases Filed from 02/01/2005 to 02/28/2005
Run Date: 03/03/05

Run Time 14:31

Divisional Breakdown

	Dade					Broward					Palm Beach				
	7	11	12	13	304	7	11	12	13	304	7	11	12	13	304
Ch	7	11	12	13	304	7	11	12	13	304	7	11	12	13	304
AJC	248 ✓	3 ✓	0	73 ✓	0	0	0	0	0	0	0	0	0	0	0
SHF	0	0	0	0	0	0	0	0	0	0	234	1	0	77	0
PGH	0	0	0	0	0	142	2	0	57	0	97	2	0	0	0
RAM	255	2	0	72	0	0	0	0	0	0	0	0	0	0	0
RBR	0	0	0	44	0	247	2	0	57	0	0	0	0	0	0

Tot	503	5	0	189	0	389	4	0	114	0	331	3	0	77	0
Divisional Totals					697					507					411

Totals By Judge

	Chapter 7	Section 304	Chapter 11	Chapter 12	Chapter 13	Totals
AJC	248	0	3	0	73	324
SHF	234	0	1	0	77	312
PGH	239	0	4	0	57	300
RAM	255	0	2	0	72	329
RBR	247	0	2	0	101	350

Totals	1223	0	12	0	380	

Grand Total: 1615 +2 +1 +1

"TOTAL DOES NOT INCLUDE SPLIT, TRANSFERRED IN CASES AND INTRA-DISTRICT CASES FILED PRIOR TO THIS MONTH"

UNITED STATES BANKRUPTCY COURT
Southern District of Florida

CASE CLOSING SUMMARY REPORT
For Cases Closed from 02/01/2005 to 02/28/2005
Run Date: 03/03/05

Run Time 14:36

Divisional Breakdown

		Dade					Broward					Palm Beach				
Ch	7	11	12	13	304	7	11	12	13	304	7	11	12	13	304	
AJC	421	2	0	135	1	0	0	0	0	0	0	0	0	0	0	
SHF	0	0	0	0	0	0	0	0	0	0	253	1	0	58	0	
PGH	1	0	0	0	0	174	1	0	225	0	91	0	0	0	0	
RAM	427	4	0	103	0	0	0	0	0	0	0	0	0	0	0	
RBR	0	0	0	42	0	251	3	0	214	0	0	0	0	0	0	

Tot	849	6	0	280	1	425	4	0	439	0	344	1	0	58	0	
Divisional Totals	1136				868					403						

Totals By Judge

	Chapter 7	Section 304	Chapter 11	Chapter 12	Chapter 13	Totals
AJC	421	1	2	0	135	559
SHF	253	0	1	0	58	312
PGH	266	0	1	0	225	492
RAM	427	0	4	0	103	534
RBR	251	0	3	0	256	510

Totals	1618	1	11	0	777	
Grand Total:	2407					

UNITED STATES BANKRUPTCY COURT
Southern District of FloridaAdversary Proceedings Case Filing Report
For Cases Filed from 02/01/2005 to 02/28/2005
Run Time 08:02

Run Date: 03/04/05

Divisional Breakdown

	Dade	Broward	Palm Beach	Totals
AJC	33	0	0	33
SHF	0	0	11	11
PGH	0	7	7	14
RAM	13	0	0	13
RBR	0	18	0	18

Totals	46	25	18	89

UNITED STATES BANKRUPTCY COURT
Southern District of FloridaAdversary Proceedings Case Closing Report
For Cases Closed from 2/01/2005 to 2/28/2005
Run Time 08:12

Run Date: 03/04/05

Divisional Breakdown

	Dade	Broward	Palm Beach	Totals
AJC	12	0	0	12
SHF	0	0	24	24
PGH	0	10	10	20
RAM	45	0	0	45
RBR	0	24	0	24

Totals	57	34	34	125

UNITED STATES BANKRUPTCY COURT
SOUTHERN DISTRICT OF FLORIDA

BANKRUPTCY PRO SE CASES FILING SUMMARY REPORT
For Cases Filed from 02/01/2005 to 02/28/2005

Run Date: 03/15/05

Run Time 09:05

	Divisional Breakdown															
	Dade					Broward					Palm Beach					
Ch	7	11	12	13	304	7	11	12	13	304	7	11	12	13	304	
AJC	7	0	0	10	0	0	0	0	0	0	0	0	0	0	0	
SHF	0	0	0	0	0	0	0	0	0	0	36	0	0	8	0	
PGH	0	0	0	0	0	28	0	0	13	0	19	0	0	0	0	
RAM	12	0	0	5	0	0	0	0	0	0	0	0	0	0	0	
RBR	0	0	0	13	0	63	0	0	7	0	0	0	0	0	0	

Tot	19	0	0	28	0	91	0	0	20	0	55	0	0	8	0	
Divisional Totals					47					111					63	

	Totals By Judge					
	Chapter 7	Section 304	Chapter 11	Chapter 12	Chapter 13	Totals
AJC	7	0	0	0	10	17
SHF	36	0	0	0	8	44
PGH	47	0	0	0	13	60
RAM	12	0	0	0	5	17
RBR	63	0	0	0	20	83

Totals	165	0	0	0	56	221
Grand Total:	221					

PENDING CASELOAD REPORTS BY JUDGE/CHAPTER
FEBRUARY 2005

AJC	7	11	12	13	304	ACT	TOTALS
Pending Prior Month	2,024	78	1	4,629	3	0	6,735
Cases Filed	248	3	0	73	0	0	324
Reopened	5	1	0	9	0	0	15
Split Cases	1	0	0	0	0	0	1
Transferred In	1	0	0	0	0	0	1
Reassigned To	0	0	0	0	0	0	0
Converted To	14	0	0	1	0	0	15
Transferred Out	0	0	0	0	0	0	0
Reassigned From	0	0	0	0	0	0	0
Converted From	1	0	0	14	0	0	15
Cases Closed	421	2	0	135	1	0	559
Total Pending	1,871	80	1	4,563	2	0	6,517

SHF	7	11	12	13	304	ACT	TOTALS
Pending Prior Month	1,646	30	0	2,529	5	0	4,210
Cases Filed	234	1	0	77	0	0	312
Reopened	9	0	0	6	0	0	15
Split Cases	1	0	0	0	0	0	1
Transferred In	0	0	0	0	0	0	0
Reassigned To	0	0	0	0	0	0	0
Converted To	6	0	0	4	0	0	10
Transferred Out	0	0	0	0	0	0	0
Reassigned From	0	0	0	0	0	0	0
Converted From	4	2	0	4	0	0	10
Cases Closed	253	1	0	58	0	0	312
Total Pending	1,639	28	0	2,554	5	0	4,226

PGH	7	11	12	13	304	ACT	TOTALS
Pending Prior Month	1,582	144	0	2,110	1	0	3,837
Cases Filed	239	4	0	57	0	0	300
Reopened	3	0	0	2	0	0	5
Split Cases	0	0	0	0	0	0	0
Transferred In	0	0	0	0	0	0	0
Reassigned To	0	0	0	1	0	0	1
Converted To	5	0	0	1	0	0	6
Transferred Out	0	0	0	0	0	0	0
Reassigned From	1	0	0	0	0	0	1
Converted From	1	0	0	5	0	0	6
Cases Closed	266	1	0	225	0	0	492
Total Pending	1,561	147	0	1,941	1	0	3,650

RAM	7	11	12	13	304	ACT	TOTALS
Pending Prior Month	1,944	84	0	4,721	3	0	6,752
Cases Filed	255	2	0	72	0	0	329
Reopened	7	0	0	6	0	0	13
Split Cases	0	0	0	0	0	0	0
Transferred In	0	0	0	0	0	0	0
Reassigned To	0	0	0	0	0	0	0
Converted To	10	0	0	1	0	0	11
Transferred Out	0	0	0	0	0	0	0
Reassigned From	0	0	0	0	0	0	0
Converted From	1	0	0	10	0	0	11
Cases Closed	427	4	0	103	0	0	534
Total Pending	1,788	82	0	4,687	3	0	6,560

RBR	7	11	12	13	304	ACT	TOTALS
Pending Prior Month	1,519	66	0	3,859	0	0	5,444
Cases Filed	247	2	0	101	0	0	350
Reopened	12	0	0	1	0	0	13
Split Cases	0	0	0	0	0	0	0
Transferred In	0	0	0	0	0	0	0
Reassigned To	1	0	0	0	0	0	1
Converted To	15	0	0	1	0	0	16
Transferred Out	0	0	0	0	0	0	0
Reassigned From	0	0	0	1	0	0	1
Converted From	1	2	0	13	0	0	16
Cases Closed	251	3	0	256	0	0	510
Total Pending	1,542	63	0	3,692	0	0	5,297

GRAND TOTAL:	8,401	400	1	17,437	11	0	26,250
---------------------	--------------	------------	----------	---------------	-----------	----------	---------------

AJC PENDING CASE SUMMARY

CHAPTER	DADE DIVISION	BROWARD DIVISION	PALM BEACH DIVISION	TOTAL
7	1,870	1	0	1,871
11	78	2	0	80
12	1	0	0	1
13	4,563	0	0	4,563
304	2	0	0	2
Sub-Total	6,514	3	0	6,517
Act Cases	0	0	0	0
GRAND TOTALS	6,514	3	0	6,517

SHF PENDING CASE SUMMARY

CHAPTER	DADE DIVISION	BROWARD DIVISION	PALM BEACH DIVISION	TOTAL
7	1	2	1,636	1,639
11	0	0	28	28
12	0	0	0	0
13	0	0	2,554	2,554
304	0	0	5	5
Sub-Total	1	2	4,223	4,226
Act Cases	0	0	0	0
GRAND TOTALS	1	2	4,223	4,226

PGH PENDING CASE SUMMARY

CHAPTER	DADE DIVISION	BROWARD DIVISION	PALM BEACH DIVISION	TOTAL
7	18	892	651	1,561
11	1	115	31	147
12	0	0	0	0
13	0	1,941	0	1,941
304	0	1	0	1
Sub-Total	19	2,949	682	3,650
Act Cases	0	0	0	0
GRAND TOTALS	19	2,949	682	3,650

RAM PENDING CASE SUMMARY

CHAPTER	DADE DIVISION	BROWARD DIVISION	PALM BEACH DIVISION	TOTAL
7	1,786	0	2	1,788
11	81	0	1	82
12	0	0	0	0
13	4,687	0	0	4,687
304	3	0	0	3
Sub-Total	6,557	0	3	6,560
Act Cases	0	0	0	0
GRAND TOTALS	6,557	0	3	6,560

RBR PENDING CASE SUMMARY

CHAPTER	DADE DIVISION	BROWARD DIVISION	PALM BEACH DIVISION	TOTAL
7	35	1,506	1	1,542
11	0	63	0	63
12	0	0	0	0
13	1,745	1,947	0	3,692
304	0	0	0	0
Sub-Total	1,780	3,516	1	5,297
Act Cases	0	0	0	0
GRAND TOTALS	1,780	3,516	1	5,297

DISTRICT TOTALS	14,871	6,470	4,909	26,250
------------------------	---------------	--------------	--------------	---------------

CASE FILING SUMMARY BY COUNTY

DADE COUNTY - 12025

	7	11	12	13	304	TOTAL
AJC	243	3	0	72	0	318
SHF	0	0	0	0	0	0
PGH	0	0	0	0	0	0
RAM	248	2	0	72	0	322
RBR	0	0	0	44	0	44
Sub-Total	491	5	0	188	0	684

MONROE COUNTY - 12087

	7	11	12	13	304	TOTAL
AJC	7	0	0	1	0	8
SHF	0	0	0	0	0	0
PGH	0	0	0	0	0	0
RAM	7	0	0	0	0	7
RBR	0	0	0	0	0	0
Sub-Total	14	0	0	1	0	15

Division Total 699

BROWARD COUNTY - 12011

	7	11	12	13	304	TOTAL
AJC	0	0	0	0	0	0
SHF	0	0	0	0	0	0
PGH	142	2	0	57	0	201
RAM	0	0	0	0	0	0
RBR	247	2	0	57	0	306
Sub-Total	389	4	0	114	0	507

Division Total 507

HIGHLANDS COUNTY - 12055

	7	11	12	13	304	TOTAL
AJC	0	0	0	0	0	0
SHF	18	0	0	1	0	19
PGH	0	0	0	0	0	0
RAM	0	0	0	0	0	0
RBR	0	0	0	0	0	0
Sub-Total	18	0	0	1	0	19

INDIAN RIVER COUNTY - 12061

	7	11	12	13	304	TOTAL
AJC	0	0	0	0	0	0
SHF	23	0	0	3	0	26
PGH	0	0	0	0	0	0
RAM	0	0	0	0	0	0
RBR	0	0	0	0	0	0
Sub-Total	23	0	0	3	0	26

MARTIN COUNTY - 12085

	7	11	12	13	304	TOTAL
AJC	0	0	0	0	0	0
SHF	6	0	0	1	0	7
PGH	10	0	0	0	0	10
RAM	0	0	0	0	0	0
RBR	0	0	0	0	0	0
Sub-Total	16	0	0	1	0	17

OKEECHOBEE COUNTY - 12093

	7	11	12	13	304	TOTAL
AJC	0	0	0	0	0	0
SHF	10	0	0	6	0	16
PGH	0	0	0	0	0	0
RAM	0	0	0	0	0	0
RBR	0	0	0	0	0	0
Sub-Total	10	0	0	6	0	16

PALM BEACH COUNTY - 12099

	7	11	12	13	304	TOTAL
AJC	0	0	0	0	0	0
SHF	136	1	0	54	0	191
PGH	87	2	0	0	0	89
RAM	0	0	0	0	0	0
RBR	0	0	0	0	0	0
Sub-Total	223	3	0	54	0	280

ST. LUCIE - 12111

	7	11	12	13	304	TOTAL
AJC	0	0	0	0	0	0
SHF	42	0	0	12	0	54
PGH	0	0	0	0	0	0
RAM	0	0	0	0	0	0
RBR	0	0	0	0	0	0
Sub-Total	42	0	0	12	0	54

Division Total 412

GRAND TOTAL	1226	12	0	380	0	1618
--------------------	-------------	-----------	----------	------------	----------	-------------

FEBRUARY 2005
CASE FILING SUMMARY BY NATURE OF DEBTOR/DIVISION

CHAPTER	BUSINESS				CONSUMER				TOTAL
	DADE	BROWARD	PALM BCH	DIV. TOTAL	DADE	BROWARD	PALM BCH	DIV. TOTAL	
7	6	5	10	21	499	384	322	1205	1226
11	5	3	3	11	0	1	0	1	12
12	0	0	0	0	0	0	0	0	0
13	0	0	0	0	189	114	77	380	380
304	0	0	0	0	0	0	0	0	0
TOTAL	11	8	13	32	688	499	399	1586	1618

DIVISIONAL BUSINESS CASE FILING SUMMARY

DADE DIVISION

CHAPTER	AJC	SHF	PGH	RAM	RBR	TOTAL
7	4	0	0	2	0	6
11	3	0	0	2	0	5
12	0	0	0	0	0	0
13	0	0	0	0	0	0
304	0	0	0	0	0	0
Sub-Total	7	0	0	4	0	11

BROWARD DIVISION

CHAPTER	AJC	SHF	PGH	RAM	RBR	TOTAL
7	0	0	1	0	4	5
11	0	0	2	0	1	3
12	0	0	0	0	0	0
13	0	0	0	0	0	0
304	0	0	0	0	0	0
Sub-Total	0	0	3	0	5	8

PALM BEACH DIVISION

CHAPTER	AJC	SHF	PGH	RAM	RBR	TOTAL
7	0	8	2	0	0	10
11	0	1	2	0	0	3
12	0	0	0	0	0	0
13	0	0	0	0	0	0
304	0	0	0	0	0	0
Sub-Total	0	9	4	0	0	13
GRAND TOTAL	7	9	7	4	5	32

DIVISIONAL CONSUMER CASE FILING SUMMARY

DADE DIVISION

CHAPTER	AJC	SHF	PGH	RAM	RBR	TOTAL
7	246	0	0	253	0	499
11	0	0	0	0	0	0
12	0	0	0	0	0	0
13	73	0	0	72	44	189
304	0	0	0	0	0	0
Sub-Total	319	0	0	325	44	688

BROWARD DIVISION

CHAPTER	AJC	SHF	PGH	RAM	RBR	TOTAL
7	0	0	141	0	243	384
11	0	0	0	0	1	1
12	0	0	0	0	0	0
13	0	0	57	0	57	114
304	0	0	0	0	0	0
Sub-Total	0	0	198	0	301	499

PALM BEACH DIVISION

CHAPTER	AJC	SHF	PGH	RAM	RBR	TOTAL
7	0	227	95	0	0	322
11	0	0	0	0	0	0
12	0	0	0	0	0	0
13	0	77	0	0	0	77
304	0	0	0	0	0	0
Sub-Total	0	304	95	0	0	399
GRAND TOTAL	319	304	293	325	345	1586

CASE FILING SUMMARY BY COUNTY / CONSUMER - BUSINESS

CONSUMERS

DADE COUNTY - 12025

	7	11	12	13	304	TOTAL
AJC	239	0	0	72	0	311
SHF	0	0	0	0	0	0
PGH	0	0	0	0	0	0
RAM	246	0	0	72	0	318
RBR	0	0	0	44	0	44
Sub-Total	485	0	0	188	0	673

MONROE COUNTY - 12087

	7	11	12	13	304	TOTAL
AJC	7	0	0	1	0	8
SHF	0	0	0	0	0	0
PGH	0	0	0	0	0	0
RAM	7	0	0	0	0	7
RBR	0	0	0	0	0	0
Sub-Total	14	0	0	1	0	15

0 Division
688 Total

BROWARD COUNTY - 12011

	7	11	12	13	304	TOTAL
AJC	0	0	0	0	0	0
SHF	0	0	0	0	0	0
PGH	141	0	0	57	0	198
RAM	0	0	0	0	0	0
RBR	243	1	0	57	0	301
Sub-Total	384	1	0	114	0	499

0 Division
499 Total

HIGHLANDS COUNTY - 12055

	7	11	12	13	304	TOTAL
AJC	0	0	0	0	0	0
SHF	17	0	0	1	0	18
PGH	0	0	0	0	0	0
RAM	0	0	0	0	0	0
RBR	0	0	0	0	0	0
Sub-Total	17	0	0	1	0	18

INDIAN RIVER COUNTY - 12061

	7	11	12	13	304	TOTAL
AJC	0	0	0	0	0	0
SHF	23	0	0	3	0	26
PGH	0	0	0	0	0	0
RAM	0	0	0	0	0	0
RBR	0	0	0	0	0	0
Sub-Total	23	0	0	3	0	26

MARTIN COUNTY - 12085

	7	11	12	13	304	TOTAL
AJC	0	0	0	0	0	0
SHF	6	0	0	1	0	7
PGH	10	0	0	0	0	10
RAM	0	0	0	0	0	0
RBR	0	0	0	0	0	0
Sub-Total	16	0	0	1	0	17

OKEECHOBEE COUNTY - 12093

	7	11	12	13	304	TOTAL
AJC	0	0	0	0	0	0
SHF	10	0	0	6	0	16
PGH	0	0	0	0	0	0
RAM	0	0	0	0	0	0
RBR	0	0	0	0	0	0
Sub-Total	10	0	0	6	0	16

PALM BEACH COUNTY - 12099

	7	11	12	13	304	TOTAL
AJC	0	0	0	0	0	0
SHF	130	0	0	54	0	184
PGH	85	0	0	0	0	85
RAM	0	0	0	0	0	0
RBR	0	0	0	0	0	0
Sub-Total	215	0	0	54	0	269

ST. LUCIE - 12111

	7	11	12	13	304	TOTAL
AJC	0	0	0	0	0	0
SHF	41	0	0	12	0	53
PGH	0	0	0	0	0	0
RAM	0	0	0	0	0	0
RBR	0	0	0	0	0	0
Sub-Total	41	0	0	12	0	53

0 Division
399 Total

GRAND TOTAL	1205	1	0	380	0	1586
--------------------	-------------	----------	----------	------------	----------	-------------

**CASE FILING SUMMARY BY COUNTY / CONSUMER - BUSINESS
BUSINESS**

DADE COUNTY - 12025

	7	11	12	13	304	TOTAL
AJC	4	3	0	0	0	7
SHF	0	0	0	0	0	0
PGH	0	0	0	0	0	0
RAM	2	2	0	0	0	4
RBR	0	0	0	0	0	0
Sub-Total	6	5	0	0	0	11

MONROE COUNTY - 12087

	7	11	12	13	304	TOTAL
AJC	0	0	0	0	0	0
SHF	0	0	0	0	0	0
PGH	0	0	0	0	0	0
RAM	0	0	0	0	0	0
RBR	0	0	0	0	0	0
Sub-Total	0	0	0	0	0	0

0 Division
0 Total 11

BROWARD COUNTY - 12011

	7	11	12	13	304	TOTAL
AJC	0	0	0	0	0	0
SHF	0	0	0	0	0	0
PGH	1	2	0	0	0	3
RAM	0	0	0	0	0	0
RBR	4	1	0	0	0	5
Sub-Total	5	3	0	0	0	8

5 Division
8 Total 8

HIGHLANDS COUNTY - 12055

	7	11	12	13	304	TOTAL
AJC	0	0	0	0	0	0
SHF	1	0	0	0	0	1
PGH	0	0	0	0	0	0
RAM	0	0	0	0	0	0
RBR	0	0	0	0	0	0
Sub-Total	1	0	0	0	0	1

INDIAN RIVER COUNTY - 12061

	7	11	12	13	304	TOTAL
AJC	0	0	0	0	0	0
SHF	0	0	0	0	0	0
PGH	0	0	0	0	0	0
RAM	0	0	0	0	0	0
RBR	0	0	0	0	0	0
Sub-Total	0	0	0	0	0	0

MARTIN COUNTY - 12085

	7	11	12	13	304	TOTAL
AJC	0	0	0	0	0	0
SHF	0	0	0	0	0	0
PGH	0	0	0	0	0	0
RAM	0	0	0	0	0	0
RBR	0	0	0	0	0	0
Sub-Total	0	0	0	0	0	0

OKEECHOBEE COUNTY - 12093

	7	11	12	13	304	TOTAL
AJC	0	0	0	0	0	0
SHF	0	0	0	0	0	0
PGH	0	0	0	0	0	0
RAM	0	0	0	0	0	0
RBR	0	0	0	0	0	0
Sub-Total	0	0	0	0	0	0

PALM BEACH COUNTY - 12099

	7	11	12	13	304	TOTAL
AJC	0	0	0	0	0	0
SHF	6	1	0	0	0	7
PGH	2	2	0	0	0	4
RAM	0	0	0	0	0	0
RBR	0	0	0	0	0	0
Sub-Total	8	3	0	0	0	11

ST. LUCIE - 12111

	7	11	12	13	304	TOTAL
AJC	0	0	0	0	0	0
SHF	1	0	0	0	0	1
PGH	0	0	0	0	0	0
RAM	0	0	0	0	0	0
RBR	0	0	0	0	0	0
Sub-Total	1	0	0	0	0	1

0 Division
1 Total 13

GRAND TOTAL	21	11	0	0	0	32
--------------------	-----------	-----------	----------	----------	----------	-----------

AJC	CH 7	CH 11	CH 12	CH 13	SEC 304	TOTAL
JAN	281	2	0	71	0	354
FEB	250	3	0	73	0	326
MAR	0	0	0	0	0	0
APR	0	0	0	0	0	0
MAY	0	0	0	0	0	0
JUN	0	0	0	0	0	0
JUL	0	0	0	0	0	0
AUG	0	0	0	0	0	0
SEP	0	0	0	0	0	0
OCT	0	0	0	0	0	0
NOV	0	0	0	0	0	0
DEC	0	0	0	0	0	0
TOTALS	531	5	0	144	0	680

SHF	CH 7	CH 11	CH 12	CH 13	SEC 304	TOTAL
JAN	227	4	0	86	0	317
FEB	235	1	0	77	0	313
MAR	0	0	0	0	0	0
APR	0	0	0	0	0	0
MAY	0	0	0	0	0	0
JUN	0	0	0	0	0	0
JUL	0	0	0	0	0	0
AUG	0	0	0	0	0	0
SEP	0	0	0	0	0	0
OCT	0	0	0	0	0	0
NOV	0	0	0	0	0	0
DEC	0	0	0	0	0	0
TOTALS	462	5	0	163	0	630

PGH	CH 7	CH 11	CH 12	CH 13	SEC 304	TOTAL
JAN	222	1	0	60	0	283
FEB	239	4	0	57	0	300
MAR	0	0	0	0	0	0
APR	0	0	0	0	0	0
MAY	0	0	0	0	0	0
JUN	0	0	0	0	0	0
JUL	0	0	0	0	0	0
AUG	0	0	0	0	0	0
SEP	0	0	0	0	0	0
OCT	0	0	0	0	0	0
NOV	0	0	0	0	0	0
DEC	0	0	0	0	0	0
TOTALS	461	5	0	117	0	583

RAM	CH 7	CH 11	CH 12	CH 13	SEC 304	TOTAL
JAN	274	1	0	72	0	347
FEB	255	2	0	72	0	329
MAR	0	0	0	0	0	0
APR	0	0	0	0	0	0
MAY	0	0	0	0	0	0
JUN	0	0	0	0	0	0
JUL	0	0	0	0	0	0
AUG	0	0	0	0	0	0
SEP	0	0	0	0	0	0
OCT	0	0	0	0	0	0
NOV	0	0	0	0	0	0
DEC	0	0	0	0	0	0
TOTALS	529	3	0	144	0	676

RBR	CH 7	CH 11	CH 12	CH 13	SEC 304	TOTAL
JAN	226	1	0	104	0	331
FEB	247	2	0	101	0	350
MAR	0	0	0	0	0	0
APR	0	0	0	0	0	0
MAY	0	0	0	0	0	0
JUN	0	0	0	0	0	0
JUL	0	0	0	0	0	0
AUG	0	0	0	0	0	0
SEP	0	0	0	0	0	0
OCT	0	0	0	0	0	0
NOV	0	0	0	0	0	0
DEC	0	0	0	0	0	0
TOTALS	473	3	0	205	0	681

**2005 YEAR-TO-DATE COMPARISON OF BANKRUPTCY CASE FILINGS
BY JUDGE**

	AJC	SHF	PGH	RAM	RBR	TOTAL
JAN	354	317	283	347	331	1632
FEB	326	313	300	329	350	1618
MAR	0	0	0	0	0	0
APR	0	0	0	0	0	0
MAY	0	0	0	0	0	0
JUN	0	0	0	0	0	0
JUL	0	0	0	0	0	0
AUG	0	0	0	0	0	0
SEP	0	0	0	0	0	0
OCT	0	0	0	0	0	0
NOV	0	0	0	0	0	0
DEC	0	0	0	0	0	0
TOTALS	680	630	583	676	681	3250
% of Total	20.92	19.38	17.94	20.80	20.95	

**2005 YEAR-TO-DATE COMPARISON OF BANKRUPTCY CASE FILINGS
BY JUDGE/CHAPTER**

	CH 7	CH 11	CH 12	CH 13	SEC 304	TOTAL
AJC	531	5	0	144	0	680
SHF	462	5	0	163	0	630
PGH	461	5	0	117	0	583
RAM	529	3	0	144	0	676
RBR	473	3	0	205	0	681
TOTALS	2456	21	0	773	0	3250

CALENDAR YEAR-TO-DATE COMPARISON

	ENDING FEB 05	ENDING FEB 04	PERCENT CHANGE
Bankruptcy Case Filings	3250	3884	-16.32
Bankruptcy Case Closings	5787	5751	0.63
Adversary Filings	153	196	-21.94
Adversary Closings	240	492	-51.22

12-MONTH/THREE YEAR COMPARISON

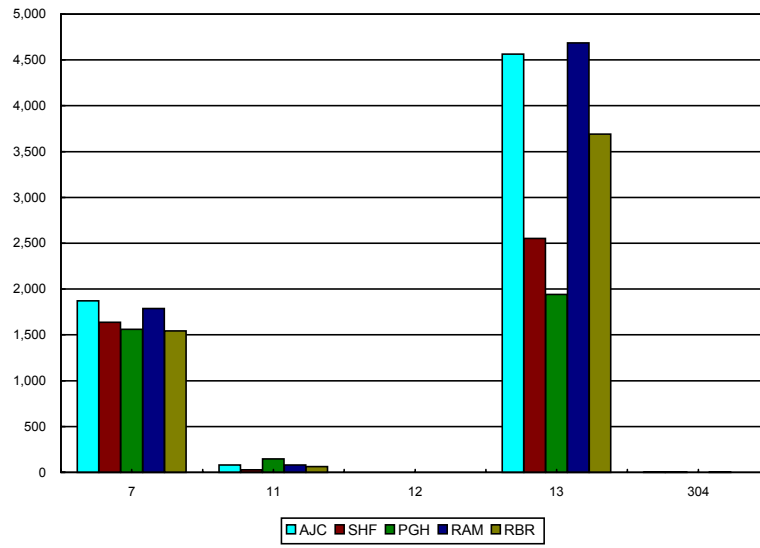
	ENDING FEB 05	ENDING FEB 04	ENDING FEB 03	% CHANGE 05/04	% CHANGE 05/03
Bankruptcy Case Filings	25846	31024	32080	-16.69	-19.43
Bankruptcy Case Closings	29998	31397	31157	-4.46	-3.72
Adversary Filings	1310	2657	1559	-50.70	-15.97
Adversary Closings	1624	2596	1379	-37.44	17.77

MONTHLY COMPARISON

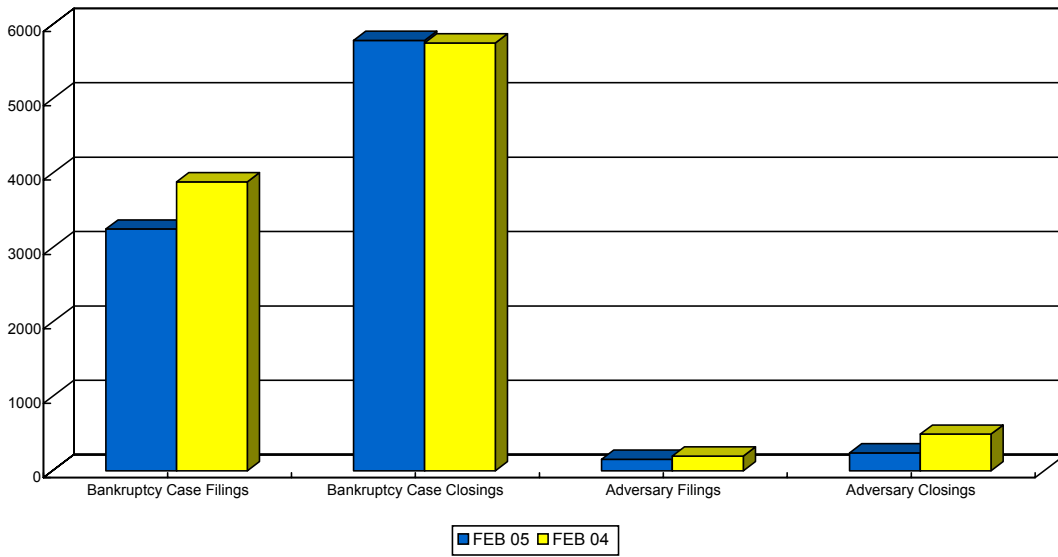
	FEB 05	FEB 04	PERCENT CHANGE
Bankruptcy Case Filings	1618	1970	-17.87
Bankruptcy Case Closings	2407	2696	-10.72
Adversary Filings	89	115	-22.61
Adversary Closings	125	236	-47.03

*Filings and Closings for Dade Division includes Monroe County
 Filings and Closings for Palm Beach Division includes Indian River, Highlands, Martin,
 St. Lucie & Okeechobee Counties*

TOTAL PENDING CASELOAD BY JUDGE/CHAPTER



CALENDAR YEAR-TO-DATE COMPARISON



12-MONTH/THREE YEAR COMPARISON

