

UNITED STATES BANKRUPTCY COURT

SOUTHERN DISTRICT OF FLORIDA

*51 S.W. 1st Avenue
Room 1401
Miami, FL 33130*

*Katherine Gould-Feldman
Clerk of Court*



MONTHLY STATISTICAL REPORT

August 2008

MONTHLY STATISTICAL REPORT

TABLE OF CONTENTS

	<i>page</i>
<i>I. MONTHLY SARD SUMMARY REPORT</i>	<i>2</i>
<i>II. BK CASE FILINGS SUMMARY REPORT</i>	<i>3</i>
<i>III. BK CASE CLOSINGS SUMMARY REPORT</i>	<i>4</i>
<i>IV. AP CASE FILINGS SUMMARY REPORT</i>	<i>3</i>
<i>V. AP CASE CLOSINGS SUMMARY REPORT</i>	<i>4</i>
<i>VI. BK PRO SE CASES FILING SUMMARY REPORT</i>	<i>5</i>
<i>VII. PENDING CASELOAD REPORT BY JUDGE/CHAPTER</i>	<i>6</i>
<i>VIII. DIVISIONAL CASELOAD REPORT</i>	<i>7</i>
<i>IX. BREAKDOWN BY NATURE OF DEBTOR</i>	<i>8</i>
<i>X. BREAKDOWN BY COUNTY / NATURE - CONSUMER</i>	<i>9</i>
<i>XI. BREAKDOWN BY COUNTY / NATURE - BUSINESS</i>	<i>10</i>
<i>XII. SUMMARIES AND GRAPHS</i>	<i>11- 15</i>

**AUGUST 2008
MONTHLY SARD REPORT SUMMARY**

I. BC101 REPORT OF BANKRUPTCY CASES

	AJC	LMI	RAM	JKO	RBR	PGH	EPK	TOTAL
Pending Prior Month	2,762	2,085	2,771	2,569	2,612	2,338	1,998	17,135
Cases Filed	255	253	254	249	252	229	229	1,721
Reopened	16	4	5	6	11	5	3	50
Split Cases	0	0	0	0	0	0	0	0
Trans. In	0	0	0	1	0	1	0	2
Reassigned To	0	0	1	1	1	0	0	3
Trans. Out	0	0	0	0	0	0	0	0
Reassigned From	1	0	0	0	2	0	0	3
Cases Closed	271	216	270	266	229	110	281	1,643
Cases Pending	2,761	2,126	2,761	2,560	2,645	2,463	1,949	17,265

II. BC109 REPORT OF ADVERSARY CASES

	AJC	LMI	RAM	JKO	RBR	PGH	EPK	TOTAL
Pending Prior Month	58	69	46	114	116	118	10	531
Cases Filed	2	6	4	3	8	7	9	39
Trans. In	0	0	0	0	0	0	0	0
Reassigned To	0	0	0	0	0	0	0	0
Cases Reopened	0	0	0	0	0	0	0	0
Cases Closed	5	5	4	3	23	7	1	48
Trans. Out	0	0	0	0	0	0	0	0
Reassigned From	0	0	0	0	0	0	0	0
Cases Pending	55	70	46	114	101	118	18	522

IV. MONTHLY REPORT OF TRIALS AND OTHER ACTIVITY

	Contested Proceedings	Miscellaneous Proceedings	Total Hours in Court
AJC	10	30	40
PGH	3	15	18
LMI	11	9	20
RAM	13	22	35
JKO	12	16	28
RBR	8	14	22
EPK	0	7	7
Total	57	113	163

Cases Summary Report Group By Person Office
New Filed: 08/01/2008 - 08/31/2008

3

Judge	Office	Ch7	Ch9	Ch11	Ch12	Ch13	Ch15	304	Total	Adv	Mis
AJC	Miami	198	0	3	1	53	0	0	255	2	2
LMI	Miami	195	0	1	1	56	0	0	253	6	2
RAM	Miami	196	0	3	0	55	0	0	254	4	3
JKO	Broward	183	0	3	0	63	0	0	249	3	0
RBR	Broward	183	0	3	0	66	0	0	252	8	0
EPK	WPB	171	0	1	0	57	0	0	229	9	1
PGH	WPB	170	0	2	0	57	0	0	229	7	0
Total		1296	0	16	2	407	0	0	1721	39	8

Cases Summary Report Group By Person Office
Closed: 08/01/2008 - 08/31/2008

4

Judge	Office	Ch7	Ch9	Ch11	Ch12	Ch13	Ch15	304	Total	Adv	Mis
AJC	Miami	153	0	0	0	118	0	0	271	5	0
LMI	Miami	151	0	3	0	62	0	0	216	5	0
RAM	Miami	133	0	0	0	137	0	0	270	4	0
JKO	Broward	216	0	0	0	50	0	0	266	3	0
RBR	Broward	175	0	0	0	54	0	0	229	23	0
EPK	WPB	250	0	0	0	31	0	0	281	1	0
PGH	WPB	54	0	4	0	52	0	0	110	7	0
Total		1132	0	7	0	504	0	0	1643	48	0

Cases Summary Report Group By Person Office
Pro Se: 08/01/2008 - 08/31/2008

5

Judge	Office	Ch7	Ch9	Ch11	Ch12	Ch13	Ch15	304	Total	Adv	Mis
AJC	Miami	5	0	0	0	16	0	0	21	0	2
LMI	Miami	8	0	0	0	12	0	0	20	1	2
RAM	Miami	3	0	0	0	13	0	0	16	0	3
JKO	Broward	14	0	0	0	7	0	0	21	0	0
RBR	Broward	21	0	1	0	5	0	0	27	1	0
EPK	WPB	18	0	0	0	3	0	0	21	1	0
PGH	WPB	15	0	1	0	1	0	0	17	0	0
Total		84	0	2	0	57	0	0	143	3	7

PENDING CASELOAD REPORTS BY JUDGE/CHAPTER
AUGUST 2008

AJC	7	11	12	13	15	304	TOTALS
Pending Prior Month	1,118	83	1	1,556	0	4	2,762
Cases Filed	198	3	1	53	0	0	255
Reopened	13	1	0	2	0	0	16
Split Cases	0	0	0	0	0	0	0
Transferred In	0	0	0	0	0	0	0
Reassigned To	0	0	0	0	0	0	0
Converted To	5	0	0	0	0	0	5
Transferred Out	0	0	0	0	0	0	0
Reassigned From	1	0	0	0	0	0	1
Converted From	0	0	0	5	0	0	5
Cases Closed	153	0	0	118	0	0	271
Total Pending	1,180	87	2	1,488	0	4	2,761
PGH	7	11	12	13	15	304	TOTALS
Pending Prior Month	1,014	82	1	1,241	0	0	2,338
Cases Filed	170	2	0	57	0	0	229
Reopened	3	0	0	2	0	0	5
Split Cases	0	0	0	0	0	0	0
Transferred In	1	0	0	0	0	0	1
Reassigned To	0	0	0	0	0	0	0
Converted To	6	0	0	0	0	0	6
Transferred Out	0	0	0	0	0	0	0
Reassigned From	0	0	0	0	0	0	0
Converted From	0	1	0	5	0	0	6
Cases Closed	54	4	0	52	0	0	110
Total Pending	1,140	79	1	1,243	0	0	2,463
LMI	7	11	12	13	15	304	TOTALS
Pending Prior Month	1,073	68	2	940	2	0	2,085
Cases Filed	195	1	1	56	0	0	253
Reopened	4	0	0	0	0	0	4
Split Cases	0	0	0	0	0	0	0
Transferred In	0	0	0	0	0	0	0
Reassigned To	0	0	0	0	0	0	0
Converted To	3	0	0	0	0	0	3
Transferred Out	0	0	0	0	0	0	0
Reassigned From	0	0	0	0	0	0	0
Converted From	0	1	0	2	0	0	3
Cases Closed	151	3	0	62	0	0	216
Total Pending	1,124	65	3	932	2	0	2,126
RAM	7	11	12	13	15	304	TOTALS
Pending Prior Month	1,116	50	0	1,602	1	2	2,771
Cases Filed	196	3	0	55	0	0	254
Reopened	4	0	0	1	0	0	5
Split Cases	0	0	0	0	0	0	0
Transferred In	0	0	0	0	0	0	0
Reassigned To	1	0	0	0	0	0	1
Converted To	3	0	0	0	0	0	3
Transferred Out	0	0	0	0	0	0	0
Reassigned From	0	0	0	0	0	0	0
Converted From	0	0	0	3	0	0	3
Cases Closed	133	0	0	137	0	0	270
Total Pending	1,187	53	0	1,518	1	2	2,761
JKO	7	11	12	13	15	304	TOTALS
Pending Prior Month	1,104	71	1	1,393	0	0	2,569
Cases Filed	183	3	0	63	0	0	249
Reopened	5	0	0	1	0	0	6
Split Cases	0	0	0	0	0	0	0
Transferred In	0	0	0	1	0	0	1
Reassigned To	0	0	0	1	0	0	1
Converted To	8	0	0	5	0	0	13
Transferred Out	0	0	0	0	0	0	0
Reassigned From	0	0	0	0	0	0	0
Converted From	5	1	0	7	0	0	13
Cases Closed	216	0	0	50	0	0	266
Total Pending	1,079	73	1	1,407	0	0	2,560
RBR	7	11	12	13	15	304	TOTALS
Pending Prior Month	1,098	105	0	1,409	0	0	2,612
Cases Filed	183	3	0	66	0	0	252
Reopened	11	0	0	0	0	0	11
Split Cases	0	0	0	0	0	0	0
Transferred In	0	0	0	0	0	0	0
Reassigned To	1	0	0	0	0	0	1
Converted To	5	0	0	2	0	0	7
Transferred Out	0	0	0	0	0	0	0
Reassigned From	1	0	0	1	0	0	2
Converted From	2	0	0	5	0	0	7
Cases Closed	175	0	0	54	0	0	229
Total Pending	1,120	108	0	1,417	0	0	2,645
EPK	7	11	12	13	15	304	TOTALS
Pending Prior Month	995	24	0	979	0	0	1,998
Cases Filed	171	1	0	57	0	0	229
Reopened	3	0	0	0	0	0	3
Split Cases	0	0	0	0	0	0	0
Transferred In	0	0	0	0	0	0	0
Reassigned To	0	0	0	0	0	0	0
Converted To	3	0	0	7	0	0	10
Transferred Out	0	0	0	0	0	0	0
Reassigned From	0	0	0	0	0	0	0
Converted From	7	0	0	3	0	0	10
Cases Closed	250	0	0	31	0	0	281
Total Pending	915	25	0	1,009	0	0	1,949
GRAND TOTAL:	7,745	490	7	9,014	3	6	17,265

Cases Summary Report Group By Person Office
Pending: 01/01/1900 - 08/31/2008

7

Judge	Office	Ch7	Ch9	Ch11	Ch12	Ch13	Ch15	304	Total	Adv	Mis
AJC	Miami	1180	0	87	2	1488	0	4	2761	55	3
LMI	Miami	1124	0	65	3	932	2	0	2126	70	5
PGH	Miami	0	0	1	0	0	0	0	1	0	0
RAM	Miami	1185	0	52	0	1518	1	2	2758	46	4
RBR	Miami	1	0	0	0	0	0	0	1	0	0
JKO	Broward	1076	0	73	1	1407	0	0	2557	111	1
PGH	Broward	2	0	0	0	0	0	0	2	0	0
RBR	Broward	1117	0	108	0	1417	0	0	2642	100	1
EPK	WPB	915	0	25	0	1009	0	0	1949	18	1
JKO	WPB	3	0	0	0	0	0	0	3	3	0
PGH	WPB	1138	0	78	1	1243	0	0	2460	118	0
RAM	WPB	2	0	1	0	0	0	0	3	0	0
RBR	WPB	2	0	0	0	0	0	0	2	1	0
Total		7745	0	490	7	9014	3	6	17265	522	15

Cases Summary Report Group By Person Office
Business: 08/01/2008 - 08/31/2008

8

Judge	Office	Ch7	Ch9	Ch11	Ch12	Ch13	Ch15	304	Total	Adv	Mis
AJC	Miami	13	0	3	1	0	0	0	17	0	0
LMI	Miami	8	0	1	1	2	0	0	12	0	0
RAM	Miami	14	0	3	0	2	0	0	19	0	0
JKO	Broward	16	0	3	0	1	0	0	20	0	0
RBR	Broward	16	0	2	0	1	0	0	19	0	0
EPK	WPB	15	0	1	0	1	0	0	17	0	0
PGH	WPB	12	0	2	0	2	0	0	16	0	0
Total		94	0	15	2	9	0	0	120	0	0

Cases Summary Report Group By Person Office
Consumer: 08/01/2008 - 08/31/2008

Judge	Office	Ch7	Ch9	Ch11	Ch12	Ch13	Ch15	304	Total	Adv	Mis
AJC	Miami	185	0	0	0	53	0	0	238	0	0
LMI	Miami	187	0	0	0	54	0	0	241	0	0
RAM	Miami	182	0	0	0	53	0	0	235	0	0
JKO	Broward	167	0	0	0	62	0	0	229	0	0
RBR	Broward	167	0	1	0	65	0	0	233	0	0
EPK	WPB	156	0	0	0	56	0	0	212	0	0
PGH	WPB	158	0	0	0	55	0	0	213	0	0
Total		1202	0	1	0	398	0	0	1601	0	0

Cases Summary Report Group By Person County
Consumer: 08/01/2008 - 08/31/2008

9

Judge	County	Ch7	Ch9	Ch11	Ch12	Ch13	Ch15	304	Total	Adv	Mis
EPK	Brevard	0	0	0	0	1	0	0	1	0	0
EPK	Broward	1	0	0	0	0	0	0	1	0	0
JKO	Broward	167	0	0	0	62	0	0	229	0	0
RBR	Broward	163	0	1	0	65	0	0	229	0	0
EPK	Highlands	5	0	0	0	3	0	0	8	0	0
PGH	Highlands	2	0	0	0	1	0	0	3	0	0
EPK	Indian River	8	0	0	0	2	0	0	10	0	0
PGH	Indian River	9	0	0	0	1	0	0	10	0	0
EPK	Martin	9	0	0	0	6	0	0	15	0	0
PGH	Martin	9	0	0	0	3	0	0	12	0	0
AJC	Miami-Dade	181	0	0	0	53	0	0	234	0	0
LMI	Miami-Dade	186	0	0	0	54	0	0	240	0	0
RAM	Miami-Dade	181	0	0	0	51	0	0	232	0	0
RBR	Miami-Dade	3	0	0	0	0	0	0	3	0	0
AJC	Monroe	4	0	0	0	0	0	0	4	0	0
LMI	Monroe	1	0	0	0	0	0	0	1	0	0
RAM	Monroe	1	0	0	0	2	0	0	3	0	0
EPK	Okeechobee	2	0	0	0	1	0	0	3	0	0
PGH	Okeechobee	0	0	0	0	2	0	0	2	0	0
EPK	Palm Beach	96	0	0	0	33	0	0	129	0	0
PGH	Palm Beach	97	0	0	0	33	0	0	130	0	0
EPK	St. Lucie	35	0	0	0	10	0	0	45	0	0
PGH	St. Lucie	41	0	0	0	15	0	0	56	0	0
RBR	XX US, Outside State	1	0	0	0	0	0	0	1	0	0
Total		1202	0	1	0	398	0	0	1601	0	0

Cases Summary Report Group By Person County
 Business: 08/01/2008 - 08/31/2008

10

Judge	County	Ch7	Ch9	Ch11	Ch12	Ch13	Ch15	304	Total	Adv	Mis
JKO	Broward	16	0	3	0	1	0	0	20	0	0
RBR	Broward	16	0	2	0	1	0	0	19	0	0
EPK	Highlands	1	0	0	0	0	0	0	1	0	0
PGH	Indian River	1	0	0	0	0	0	0	1	0	0
EPK	Martin	3	0	0	0	0	0	0	3	0	0
PGH	Martin	1	0	0	0	0	0	0	1	0	0
AJC	Miami-Dade	13	0	3	1	0	0	0	17	0	0
LMI	Miami-Dade	8	0	1	1	2	0	0	12	0	0
RAM	Miami-Dade	14	0	3	0	2	0	0	19	0	0
EPK	Palm Beach	10	0	1	0	1	0	0	12	0	0
PGH	Palm Beach	9	0	2	0	2	0	0	13	0	0
EPK	St. Lucie	1	0	0	0	0	0	0	1	0	0
PGH	St. Lucie	1	0	0	0	0	0	0	1	0	0
Total		94	0	15	2	9	0	0	120	0	0

2008 COMPARISON OF BANKRUPTCY FILINGS

AJC	CH 7	CH 11	CH 12	CH 13	CH 15	TOTAL
JAN	118	10	0	39	0	167
FEB	140	1	0	43	0	184
MAR	165	3	0	47	0	215
APR	171	2	1	52	0	226
MAY	174	4	0	56	0	234
JUN	206	4	0	60	0	270
JUL	206	5	0	61	0	272
AUG	198	3	1	53	0	255
SEP	0	0	0	0	0	0
OCT	0	0	0	0	0	0
NOV	0	0	0	0	0	0
DEC	0	0	0	0	0	0
TOTALS	1378	32	2	411	0	1823

PGH	CH 7	CH 11	CH 12	CH 13	CH 15	TOTAL
JAN	198	11	0	95	0	304
FEB	234	3	0	92	0	329
MAR	288	3	0	109	0	400
APR	291	1	0	95	0	387
MAY	336	5	0	107	0	448
JUN	339	2	0	113	0	454
JUL	182	3	0	49	0	234
AUG	170	2	0	57	0	229
SEP	0	0	0	0	0	0
OCT	0	0	0	0	0	0
NOV	0	0	0	0	0	0
DEC	0	0	0	0	0	0
TOTALS	2038	30	0	717	0	2785

LMI	CH 7	CH 11	CH 12	CH 13	CH 15	TOTAL
JAN	121	1	0	41	1	164
FEB	141	3	1	41	0	186
MAR	163	1	0	48	0	212
APR	175	2	0	53	0	230
MAY	173	6	0	56	0	235
JUN	200	18	0	57	0	275
JUL	206	0	1	61	0	268
AUG	195	1	1	56	0	253
SEP	0	0	0	0	0	0
OCT	0	0	0	0	0	0
NOV	0	0	0	0	0	0
DEC	0	0	0	0	0	0
TOTALS	1374	32	3	413	1	1823

RAM	CH 7	CH 11	CH 12	CH 13	CH 15	TOTAL
JAN	122	2	0	42	0	166
FEB	136	4	0	40	0	180
MAR	163	0	0	50	0	213
APR	172	3	0	51	0	226
MAY	174	4	0	56	0	234
JUN	203	0	0	59	0	262
JUL	205	5	0	61	0	271
AUG	196	3	0	55	0	254
SEP	0	0	0	0	0	0
OCT	0	0	0	0	0	0
NOV	0	0	0	0	0	0
DEC	0	0	0	0	0	0
TOTALS	1371	21	0	414	0	1806

JKO	CH 7	CH 11	CH 12	CH 13	CH 15	TOTAL
JAN	108	40	0	60	0	208
FEB	129	0	0	68	0	197
MAR	162	2	0	72	0	236
APR	173	5	0	87	0	265
MAY	206	2	0	87	0	295
JUN	168	3	1	80	0	252
JUL	187	2	0	88	0	277
AUG	183	3	0	63	0	249
SEP	0	0	0	0	0	0
OCT	0	0	0	0	0	0
NOV	0	0	0	0	0	0
DEC	0	0	0	0	0	0
TOTALS	1316	57	1	605	0	1979

RBR	CH 7	CH 11	CH 12	CH 13	CH 15	TOTAL
JAN	109	29	0	60	0	198
FEB	129	3	0	62	0	194
MAR	157	3	0	72	0	232
APR	176	3	0	88	0	267
MAY	201	2	0	82	0	285
JUN	171	2	0	82	0	255
JUL	185	3	0	88	0	276
AUG	183	3	0	66	0	252
SEP	0	0	0	0	0	0
OCT	0	0	0	0	0	0
NOV	0	0	0	0	0	0
DEC	0	0	0	0	0	0
TOTALS	1311	48	0	600	0	1959

EPK	CH 7	CH 11	CH 12	CH 13	CH 15	TOTAL
JAN	0	0	0	0	0	0
FEB	0	0	0	0	0	0
MAR	0	0	0	0	0	0
APR	1	0	0	0	0	1
MAY	1	0	0	0	0	1
JUN	0	0	0	0	0	0
JUL	182	4	0	52	0	238
AUG	171	1	0	57	0	229
SEP	0	0	0	0	0	0
OCT	0	0	0	0	0	0
NOV	0	0	0	0	0	0
DEC	0	0	0	0	0	0
TOTALS	355	5	0	109	0	469

2008 YEAR-TO-DATE COMPARISON OF BANKRUPTCY CASE FILINGS
BY JUDGE

	AJC	PGH	LMI	RAM	JKO	RBR	EPK	TOTAL
JAN	167	304	184	166	208	198	0	1207
FEB	184	329	196	180	197	194	0	1270
MAR	215	400	212	213	236	232	0	1508
APR	226	387	230	226	265	267	1	1602
MAY	234	448	235	234	295	285	1	1732
JUN	270	454	275	262	252	255	0	1768
JUL	272	234	268	271	277	276	238	1836
AUG	255	229	253	254	249	252	229	1721
SEP	0	0	0	0	0	0	0	0
OCT	0	0	0	0	0	0	0	0
NOV	0	0	0	0	0	0	0	0
DEC	0	0	0	0	0	0	0	0
TOTALS	1823	2785	1823	1806	1979	1959	469	12644
% of Total	14.42	22.03	14.42	14.28	15.65	15.49	3.71	

2008 YEAR-TO-DATE COMPARISON OF BANKRUPTCY CASE FILINGS
BY JUDGE/CHAPTER

	CH 7	CH 11	CH 12	CH 13	CH 15	TOTAL
AJC	1378	32	2	411	0	1823
PGH	2038	30	0	717	0	2785
LMI	1374	32	3	413	1	1823
RAM	1371	21	0	414	0	1806
JKO	1316	57	1	605	0	1979
RBR	1311	48	0	600	0	1959
EPK	355	5	0	109	0	469
TOTALS	9143	225	6	3269	1	12644

CALENDAR YEAR-TO-DATE COMPARISON

	ENDING AUG 08	ENDING AUG 07	PERCENT CHANGE
Bankruptcy Case Filings	12,644	7,174	76.25
Bankruptcy Case Closings	11,753	9,595	22.49
Adversary Filings	553	690	-19.86
Adversary Closings	643	702	-8.40

12-MONTH/THREE YEAR COMPARISON

	ENDING AUG 08	ENDING AUG 07	ENDING AUG 06	% CHANGE 2008 / 2007	% CHANGE 2008 / 2006
Bankruptcy Case Filings	15,504	9,978	20,282	55.38	-23.56
Bankruptcy Case Closings	14,593	14,411	30,802	1.26	-52.62
Adversary Filings	725	978	1,397	-25.87	-48.10
Adversary Closings	890	1,147	1,329	-22.41	-33.03

MONTHLY COMPARISON

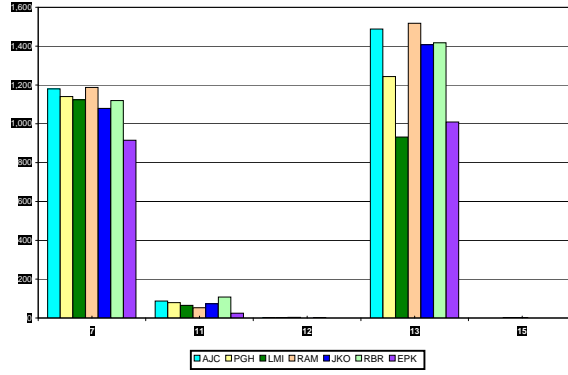
	AUG 08	AUG 07	PERCENT CHANGE
Bankruptcy Case Filings	1,721	1,065	61.60
Bankruptcy Case Closings	1,643	1,480	11.01
Adversary Filings	39	105	-62.86
Adversary Closings	48	118	-59.32

Filings and Closings for Dade Division includes Monroe County

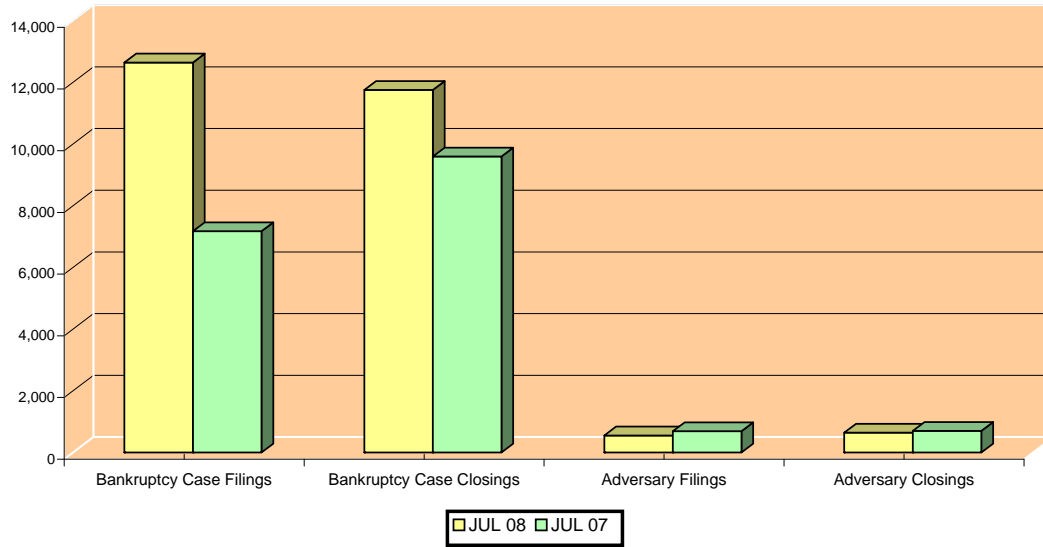
Filings and Closings for Palm Beach Division includes Indian River, Highlands, Martin,

St. Lucie & Okeechobee Counties

TOTAL PENDING CASELOAD BY JUDGE/CHAPTER



CALENDAR YEAR-TO-DATE COMPARISON



12-MONTH/THREE YEAR COMPARISON

