

UNITED STATES BANKRUPTCY COURT

SOUTHERN DISTRICT OF FLORIDA

*51 S.W. 1st Avenue
Room 1401
Miami, FL 33130*

*Katherine Gould-Feldman
Clerk of Court*



MONTHLY STATISTICAL REPORT

July 2008

MONTHLY STATISTICAL REPORT

TABLE OF CONTENTS

	<i>page</i>
<i>I. MONTHLY SARD SUMMARY REPORT</i>	<i>2</i>
<i>II. BK CASE FILINGS SUMMARY REPORT</i>	<i>3</i>
<i>III. BK CASE CLOSINGS SUMMARY REPORT</i>	<i>4</i>
<i>IV. AP CASE FILINGS SUMMARY REPORT</i>	<i>3</i>
<i>V. AP CASE CLOSINGS SUMMARY REPORT</i>	<i>4</i>
<i>VI. BK PRO SE CASES FILING SUMMARY REPORT</i>	<i>5</i>
<i>VII. PENDING CASELOAD REPORT BY JUDGE/CHAPTER</i>	<i>6</i>
<i>VIII. DIVISIONAL CASELOAD REPORT</i>	<i>7</i>
<i>IX. BREAKDOWN BY NATURE OF DEBTOR</i>	<i>8</i>
<i>X. BREAKDOWN BY COUNTY / NATURE - CONSUMER</i>	<i>9</i>
<i>XI. BREAKDOWN BY COUNTY / NATURE - BUSINESS</i>	<i>10</i>
<i>XII. SUMMARIES AND GRAPHS</i>	<i>11- 15</i>

JULY 2008
MONTHLY SARD REPORT SUMMARY

2

I. BC101 REPORT OF BANKRUPTCY CASES

	AJC	LMI	RAM	JKO	RBR	PGH	EPK	TOTAL
Pending Prior Month	2,798	2,069	2,802	2,544	2,638	4,206	2	17,059
Cases Filed	272	268	271	277	276	234	238	1,836
Reopened	4	8	15	6	6	11	0	50
Split Cases	0	0	0	0	0	0	0	0
Trans. In	1	0	1	2	0	0	0	4
Reassigned To	0	0	0	0	1	0	1,924	1,925
Trans. Out	0	0	0	0	0	0	0	0
Reassigned From	0	0	0	1	0	1,925	0	1,926
Cases Closed	313	260	318	259	309	188	166	1,813
Cases Pending	2,762	2,085	2,771	2,569	2,612	2,338	1,998	17,135

II. BC109 REPORT OF ADVERSARY CASES

	AJC	LMI	RAM	JKO	RBR	PGH	EPK	TOTAL
Pending Prior Month	64	42	50	110	114	125	1	506
Cases Filed	1	36	3	14	5	32	3	94
Trans. In	0	0	0	0	0	0	0	0
Reassigned To	0	0	0	0	0	0	7	7
Cases Reopened	0	0	1	0	1	0	0	2
Cases Closed	6	8	8	10	4	34	1	71
Trans. Out	0	0	0	0	0	0	0	0
Reassigned From	1	1	0	0	0	5	0	7
Cases Pending	58	69	46	114	116	118	10	531

IV. MONTHLY REPORT OF TRIALS AND OTHER ACTIVITY

	Contested Proceedings	Miscellaneous Proceedings	Total Hours in Court
AJC	11	24	35
PGH	1	15	16
LMI	10	25	35
RAM	15	24	39
JKO	7	28	35
RBR	0	15	15
EPK	2	12	14
Total	46	143	175

Cases Summary Report Group By Person Office
New Filed: 7/1/2008 - 7/31/2008

3

Judge	Office	Ch7	Ch9	Ch11	Ch12	Ch13	Ch15	304	Total	Adv	Mis
AJC	Miami	206	0	5	0	61	0	0	272	1	0
LMI	Miami	206	0	0	1	61	0	0	268	36	2
RAM	Miami	205	0	5	0	61	0	0	271	3	0
JKO	Broward	187	0	2	0	88	0	0	277	14	0
RBR	Broward	185	0	3	0	88	0	0	276	5	0
EPK	WPB	182	0	4	0	52	0	0	238	3	0
PGH	WPB	182	0	3	0	49	0	0	234	32	0
Total		1353	0	22	1	460	0	0	1836	94	2

Cases Summary Report Group By Person Office
Closed: 7/1/2008 - 7/31/2008

4

Judge	Office	Ch7	Ch9	Ch11	Ch12	Ch13	Ch15	304	Total	Adv	Mis
AJC	Miami	218	0	1	0	94	0	0	313	6	0
LMI	Miami	200	0	1	0	59	0	0	260	8	0
RAM	Miami	232	0	0	0	86	0	0	318	8	0
RBR	Miami	1	0	0	0	0	0	0	1	0	0
JKO	Broward	188	0	8	0	63	0	0	259	10	0
RBR	Broward	225	0	6	0	77	0	0	308	4	0
EPK	WPB	139	0	0	0	27	0	0	166	1	0
PGH	WPB	144	0	5	0	39	0	0	188	34	0
Total		1347	0	21	0	445	0	0	1813	71	0

Cases Summary Report Group By Person Office
Pro Se: 07/01/2008 - 07/31/2008

5

Judge	Office	Ch7	Ch9	Ch11	Ch12	Ch13	Ch15	304	Total	Adv	Mis
AJC	Miami	2	0	1	0	11	0	0	14	0	0
LMI	Miami	5	0	0	0	15	0	0	20	0	2
RAM	Miami	4	0	0	0	10	0	0	14	0	0
JKO	Broward	16	0	0	0	9	0	0	25	2	0
RBR	Broward	22	0	0	0	10	0	0	32	0	0
EPK	WPB	25	0	0	0	2	0	0	27	0	0
PGH	WPB	20	0	0	0	4	0	0	24	1	0
Total		94	0	1	0	61	0	0	156	3	2

PENDING CASELOAD REPORTS BY JUDGE/CHAPTER
JULY 2008

AJC	7	11	12	13	15	304	TOTALS
Pending Prior Month	1,125	79	1	1,589	0	4	2,798
Cases Filed	206	5	0	61	0	0	272
Reopened	1	0	0	3	0	0	4
Split Cases	0	0	0	0	0	0	0
Transferred In	1	0	0	0	0	0	1
Reassigned To	0	0	0	0	0	0	0
Converted To	3	0	0	0	0	0	3
Transferred Out	0	0	0	0	0	0	0
Reassigned From	0	0	0	0	0	0	0
Converted From	0	0	0	3	0	0	3
Cases Closed	218	1	0	94	0	0	313
Total Pending	1,118	83	1	1,556	0	4	2,762
PGH	7	11	12	13	15	304	TOTALS
Pending Prior Month	1,913	104	1	2,188	0	0	4,206
Cases Filed	182	3	0	49	0	0	234
Reopened	10	1	0	0	0	0	11
Split Cases	0	0	0	0	0	0	0
Transferred In	0	0	0	0	0	0	0
Reassigned To	0	0	0	0	0	0	0
Converted To	6	0	0	0	0	0	6
Transferred Out	0	0	0	0	0	0	0
Reassigned From	953	21	0	951	0	0	1,925
Converted From	0	0	0	6	0	0	6
Cases Closed	144	5	0	39	0	0	188
Total Pending	1,014	82	1	1,241	0	0	2,338
LMI	7	11	12	13	15	304	TOTALS
Pending Prior Month	1,061	68	1	937	2	0	2,069
Cases Filed	206	0	1	61	0	0	268
Reopened	4	1	0	3	0	0	8
Split Cases	0	0	0	0	0	0	0
Transferred In	0	0	0	0	0	0	0
Reassigned To	0	0	0	0	0	0	0
Converted To	2	1	0	0	0	0	3
Transferred Out	0	0	0	0	0	0	0
Reassigned From	0	0	0	0	0	0	0
Converted From	0	1	0	2	0	0	3
Cases Closed	200	1	0	59	0	0	260
Total Pending	1,073	68	2	940	2	0	2,085
RAM	7	11	12	13	15	304	TOTALS
Pending Prior Month	1,121	45	0	1,633	1	2	2,802
Cases Filed	205	5	0	61	0	0	271
Reopened	14	0	0	1	0	0	15
Split Cases	0	0	0	0	0	0	0
Transferred In	1	0	0	0	0	0	1
Reassigned To	0	0	0	0	0	0	0
Converted To	7	0	0	0	0	0	7
Transferred Out	0	0	0	0	0	0	0
Reassigned From	0	0	0	0	0	0	0
Converted From	0	0	0	7	0	0	7
Cases Closed	232	0	0	86	0	0	318
Total Pending	1,116	50	0	1,602	1	2	2,771
JKO	7	11	12	13	15	304	TOTALS
Pending Prior Month	1,094	77	1	1,372	0	0	2,544
Cases Filed	187	2	0	88	0	0	277
Reopened	6	0	0	0	0	0	6
Split Cases	0	0	0	0	0	0	0
Transferred In	2	0	0	0	0	0	2
Reassigned To	0	0	0	0	0	0	0
Converted To	6	1	0	2	0	0	9
Transferred Out	0	0	0	0	0	0	0
Reassigned From	1	0	0	0	0	0	1
Converted From	2	1	0	6	0	0	9
Cases Closed	188	8	0	63	0	0	259
Total Pending	1,104	71	1	1,393	0	0	2,569
RBR	7	11	12	13	15	304	TOTALS
Pending Prior Month	1,125	108	0	1,405	0	0	2,638
Cases Filed	185	3	0	88	0	0	276
Reopened	6	0	0	0	0	0	6
Split Cases	0	0	0	0	0	0	0
Transferred In	0	0	0	0	0	0	0
Reassigned To	1	0	0	0	0	0	1
Converted To	9	0	0	2	0	0	11
Transferred Out	0	0	0	0	0	0	0
Reassigned From	0	0	0	0	0	0	0
Converted From	2	0	0	9	0	0	11
Cases Closed	226	6	0	77	0	0	309
Total Pending	1,098	105	0	1,409	0	0	2,612
EPK	7	11	12	13	15	304	TOTALS
Pending Prior Month	2	0	0	0	0	0	2
Cases Filed	182	4	0	52	0	0	238
Reopened	0	0	0	0	0	0	0
Split Cases	0	0	0	0	0	0	0
Transferred In	0	0	0	0	0	0	0
Reassigned To	952	21	0	951	0	0	1,924
Converted To	0	0	0	2	0	0	2
Transferred Out	0	0	0	0	0	0	0
Reassigned From	0	0	0	0	0	0	0
Converted From	2	0	0	0	0	0	2
Cases Closed	139	0	0	27	0	0	166
Total Pending	995	25	0	978	0	0	1,998
GRAND TOTAL:	7,518	484	5	9,119	3	6	17,135

Cases Summary Report Group By Person Office
 Pending: 01/01/1900 - 07/31/2008

7

Judge	Office	Ch7	Ch9	Ch11	Ch12	Ch13	Ch15	304	Total	Adv	Mis
AJC	Miami	1118	0	83	1	1556	0	4	2762	58	1
LMI	Miami	1073	0	68	2	940	2	0	2085	69	3
PGH	Miami	0	0	1	0	0	0	0	1	0	0
RAM	Miami	1114	0	49	0	1602	1	2	2768	46	1
RBR	Miami	2	0	0	0	0	0	0	2	0	0
JKO	Broward	1101	0	71	1	1393	0	0	2566	111	1
PGH	Broward	2	0	0	0	0	0	0	2	0	0
RBR	Broward	1094	0	105	0	1409	0	0	2608	115	1
EPK	WPB	995	0	24	0	979	0	0	1998	10	0
JKO	WPB	3	0	0	0	0	0	0	3	3	0
PGH	WPB	1012	0	81	1	1241	0	0	2335	118	0
RAM	WPB	2	0	1	0	0	0	0	3	0	0
RBR	WPB	2	0	0	0	0	0	0	2	1	0
Total		7518	0	483	5	9120	3	6	17135	531	7

Cases Summary Report Group By Person Office
Business: 07/01/2008 - 07/31/2008

8

Judge	Office	Ch7	Ch9	Ch11	Ch12	Ch13	Ch15	304	Total	Adv	Mis
AJC	Miami	12	0	5	0	0	0	0	17	0	0
LMI	Miami	8	0	0	1	0	0	0	9	0	0
RAM	Miami	11	0	5	0	1	0	0	17	0	0
JKO	Broward	12	0	2	0	4	0	0	18	0	0
RBR	Broward	6	0	3	0	2	0	0	11	0	0
EPK	WPB	12	0	4	0	3	0	0	19	0	0
PGH	WPB	11	0	3	0	0	0	0	14	0	0
Total		72	0	22	1	10	0	0	105	0	0

8/4/2008 2:38:25 PM

Cases Summary Report Group By Person Office
Consumer: 07/01/2008 - 07/31/2008

Judge	Office	Ch7	Ch9	Ch11	Ch12	Ch13	Ch15	304	Total	Adv	Mis
AJC	Miami	194	0	0	0	61	0	0	255	0	0
LMI	Miami	198	0	0	0	61	0	0	259	0	0
RAM	Miami	194	0	0	0	60	0	0	254	0	0
JKO	Broward	175	0	0	0	84	0	0	259	0	0
RBR	Broward	179	0	0	0	86	0	0	265	0	0
EPK	WPB	170	0	0	0	49	0	0	219	0	0
PGH	WPB	171	0	0	0	49	0	0	220	0	0
Total		1281	0	0	0	450	0	0	1731	0	0

Cases Summary Report Group By Person County
 Consumer: 07/01/2008 - 07/31/2008

9

Judge	County	Ch7	Ch9	Ch11	Ch12	Ch13	Ch15	304	Total	Adv	Mis
JKO	Broward	172	0	0	0	84	0	0	256	0	0
RBR	Broward	177	0	0	0	86	0	0	263	0	0
EPK	Highlands	4	0	0	0	1	0	0	5	0	0
PGH	Highlands	4	0	0	0	0	0	0	4	0	0
RBR	Hillsborough	1	0	0	0	0	0	0	1	0	0
EPK	Indian River	12	0	0	0	1	0	0	13	0	0
PGH	Indian River	12	0	0	0	1	0	0	13	0	0
RAM	Lee	1	0	0	0	0	0	0	1	0	0
EPK	Martin	8	0	0	0	2	0	0	10	0	0
PGH	Martin	14	0	0	0	4	0	0	18	0	0
AJC	Miami-Dade	188	0	0	0	61	0	0	249	0	0
JKO	Miami-Dade	2	0	0	0	0	0	0	2	0	0
LMI	Miami-Dade	194	0	0	0	60	0	0	254	0	0
RAM	Miami-Dade	186	0	0	0	60	0	0	246	0	0
RBR	Miami-Dade	1	0	0	0	0	0	0	1	0	0
AJC	Monroe	6	0	0	0	0	0	0	6	0	0
LMI	Monroe	4	0	0	0	1	0	0	5	0	0
RAM	Monroe	6	0	0	0	0	0	0	6	0	0
EPK	Okeechobee	4	0	0	0	0	0	0	4	0	0
PGH	Okeechobee	0	0	0	0	2	0	0	2	0	0
EPK	Palm Beach	107	0	0	0	31	0	0	138	0	0
PGH	Palm Beach	96	0	0	0	28	0	0	124	0	0
EPK	St. Lucie	35	0	0	0	14	0	0	49	0	0
PGH	St. Lucie	45	0	0	0	14	0	0	59	0	0
JKO	* XX US, Outside State										
	Broward	1	0	0	0	0	0	0	1	0	0
RAM	* XX US, Outside State										
	Miami-Dade	1	0	0	0	0	0	0	1	0	0
Total		1281	0	0	0	450	0	0	1731	0	0

* Debtor Moved after case was filed

Cases Summary Report Group By Person County
Business: 07/01/2008 - 07/31/2008

10

Judge	County	Ch7	Ch9	Ch11	Ch12	Ch13	Ch15	304	Total	Adv	Mis
JKO	Broward	12	0	2	0	4	0	0	18	0	0
RBR	Broward	6	0	3	0	2	0	0	11	0	0
PGH	Highlands	1	0	0	0	0	0	0	1	0	0
EPK	Indian River	2	0	0	0	0	0	0	2	0	0
EPK	Martin	1	0	0	0	1	0	0	2	0	0
PGH	Martin	1	0	0	0	0	0	0	1	0	0
AJC	Miami-Dade	12	0	5	0	0	0	0	17	0	0
LMI	Miami-Dade	7	0	0	1	0	0	0	8	0	0
RAM	Miami-Dade	10	0	5	0	1	0	0	16	0	0
LMI	Monroe	1	0	0	0	0	0	0	1	0	0
RAM	Monroe	1	0	0	0	0	0	0	1	0	0
PGH	Okeechobee	1	0	0	0	0	0	0	1	0	0
EPK	Palm Beach	9	0	2	0	2	0	0	13	0	0
PGH	Palm Beach	6	0	3	0	0	0	0	9	0	0
EPK	St. Lucie	0	0	2	0	0	0	0	2	0	0
PGH	St. Lucie	2	0	0	0	0	0	0	2	0	0
Total		72	0	22	1	10	0	0	105	0	0

2008 COMPARISON OF BANKRUPTCY FILINGS

AJC	CH 7	CH 11	CH 12	CH 13	CH 15	TOTAL
JAN	118	10	0	39	0	167
FEB	140	1	0	43	0	184
MAR	165	3	0	47	0	215
APR	171	2	0	52	0	225
MAY	174	4	0	56	0	234
JUN	206	4	0	60	0	270
JUL	206	5	0	61	0	272
AUG	0	0	0	0	0	0
SEP	0	0	0	0	0	0
OCT	0	0	0	0	0	0
NOV	0	0	0	0	0	0
DEC	0	0	0	0	0	0
TOTALS	1180	29	0	358	0	1567

PGH	CH 7	CH 11	CH 12	CH 13	CH 15	TOTAL
JAN	198	11	0	95	0	304
FEB	234	3	0	92	0	329
MAR	288	3	0	109	0	400
APR	291	1	0	95	0	387
MAY	336	5	0	107	0	448
JUN	339	2	0	113	0	454
JUL	182	3	0	49	0	234
AUG	0	0	0	0	0	0
SEP	0	0	0	0	0	0
OCT	0	0	0	0	0	0
NOV	0	0	0	0	0	0
DEC	0	0	0	0	0	0
TOTALS	1868	28	0	660	0	2556

LMI	CH 7	CH 11	CH 12	CH 13	CH 15	TOTAL
JAN	121	1	0	41	1	164
FEB	141	3	1	41	0	186
MAR	163	1	0	48	0	212
APR	175	2	0	53	0	230
MAY	173	6	0	56	0	235
JUN	200	18	0	57	0	275
JUL	206	0	1	61	0	268
AUG	0	0	0	0	0	0
SEP	0	0	0	0	0	0
OCT	0	0	0	0	0	0
NOV	0	0	0	0	0	0
DEC	0	0	0	0	0	0
TOTALS	1179	31	2	357	1	1570

RAM	CH 7	CH 11	CH 12	CH 13	CH 15	TOTAL
JAN	122	2	0	42	0	166
FEB	136	4	0	40	0	180
MAR	163	0	0	50	0	213
APR	172	3	0	51	0	226
MAY	174	4	0	56	0	234
JUN	203	0	0	59	0	262
JUL	205	5	0	61	0	271
AUG	0	0	0	0	0	0
SEP	0	0	0	0	0	0
OCT	0	0	0	0	0	0
NOV	0	0	0	0	0	0
DEC	0	0	0	0	0	0
TOTALS	1175	18	0	359	0	1552

JKO	CH 7	CH 11	CH 12	CH 13	CH 15	TOTAL
JAN	108	40	0	60	0	208
FEB	129	0	0	68	0	197
MAR	162	2	0	72	0	236
APR	173	5	0	87	0	265
MAY	206	2	0	87	0	295
JUN	168	3	1	80	0	252
JUL	187	2	0	88	0	277
AUG	0	0	0	0	0	0
SEP	0	0	0	0	0	0
OCT	0	0	0	0	0	0
NOV	0	0	0	0	0	0
DEC	0	0	0	0	0	0
TOTALS	1133	54	1	542	0	1730

RBR	CH 7	CH 11	CH 12	CH 13	CH 15	TOTAL
JAN	109	29	0	60	0	198
FEB	129	3	0	62	0	194
MAR	157	3	0	72	0	232
APR	176	3	0	88	0	267
MAY	201	2	0	82	0	285
JUN	171	2	0	82	0	255
JUL	185	3	0	88	0	276
AUG	0	0	0	0	0	0
SEP	0	0	0	0	0	0
OCT	0	0	0	0	0	0
NOV	0	0	0	0	0	0
DEC	0	0	0	0	0	0
TOTALS	1128	45	0	534	0	1707

EPK	CH 7	CH 11	CH 12	CH 13	CH 15	TOTAL
JAN	0	0	0	0	0	0
FEB	0	0	0	0	0	0
MAR	0	0	0	0	0	0
APR	1	0	0	0	0	1
MAY	1	0	0	0	0	1
JUN	0	0	0	0	0	0
JUL	182	4	0	52	0	238
AUG	0	0	0	0	0	0
SEP	0	0	0	0	0	0
OCT	0	0	0	0	0	0
NOV	0	0	0	0	0	0
DEC	0	0	0	0	0	0
TOTALS	184	4	0	52	0	240

2008 YEAR-TO-DATE COMPARISON OF BANKRUPTCY CASE FILINGS
BY JUDGE

	AJC	PGH	LMI	RAM	JKO	RBR	EPK	TOTAL
JAN	167	304	164	166	208	198	0	1207
FEB	184	329	196	180	197	194	0	1270
MAR	215	400	212	213	236	232	0	1508
APR	225	387	230	226	265	267	1	1601
MAY	234	448	235	234	295	285	1	1732
JUN	270	454	275	262	252	255	0	1768
JUL	272	234	268	271	277	276	238	1836
AUG	0	0	0	0	0	0	0	0
SEP	0	0	0	0	0	0	0	0
OCT	0	0	0	0	0	0	0	0
NOV	0	0	0	0	0	0	0	0
DEC	0	0	0	0	0	0	0	0
TOTALS	1567	2556	1570	1552	1730	1707	240	10922
% of Total	14.35	23.40	14.37	14.21	15.84	15.63	2.20	

2008 YEAR-TO-DATE COMPARISON OF BANKRUPTCY CASE FILINGS
BY JUDGE/CHAPTER

	CH 7	CH 11	CH 12	CH 13	CH 15	TOTAL
AJC	1180	29	0	358	0	1567
PGH	1868	28	0	660	0	2556
LMI	1179	31	2	357	1	1570
RAM	1175	18	0	359	0	1552
JKO	1133	54	1	542	0	1730
RBR	1128	45	0	534	0	1707
EPK	184	4	0	52	0	240
TOTALS	7847	209	3	2862	1	10922

CALENDAR YEAR-TO-DATE COMPARISON

	ENDING JUL 08	ENDING JUL 07	PERCENT CHANGE
Bankruptcy Case Filings	10,922	6,109	78.79
Bankruptcy Case Closings	10,110	8,115	24.58
Adversary Filings	514	585	-12.14
Adversary Closings	595	584	1.88

12-MONTH/THREE YEAR COMPARISON

	ENDING JUL 08	ENDING JUL 07	ENDING JUL 06	% CHANGE 2008 / 2007	% CHANGE 2008 / 2006
Bankruptcy Case Filings	16,568	9,562	22,707	73.27	-27.04
Bankruptcy Case Closings	16,073	14,508	32,635	10.79	-50.75
Adversary Filings	830	988	1,352	-15.99	-38.61
Adversary Closings	1,008	1,100	1,329	-8.36	-24.15

MONTHLY COMPARISON

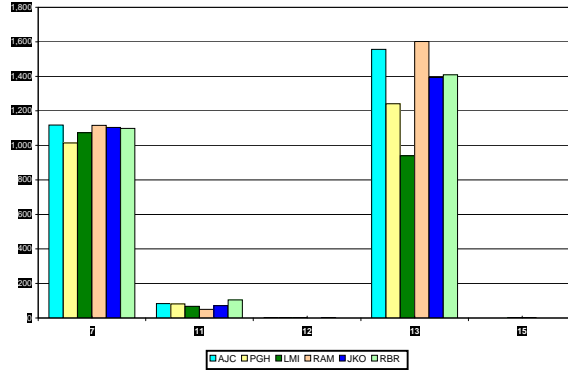
	JUL 08	JUL 07	PERCENT CHANGE
Bankruptcy Case Filings	1,836	953	92.65
Bankruptcy Case Closings	1,813	1,228	47.64
Adversary Filings	94	66	42.42
Adversary Closings	71	59	20.34

Filings and Closings for Dade Division includes Monroe County

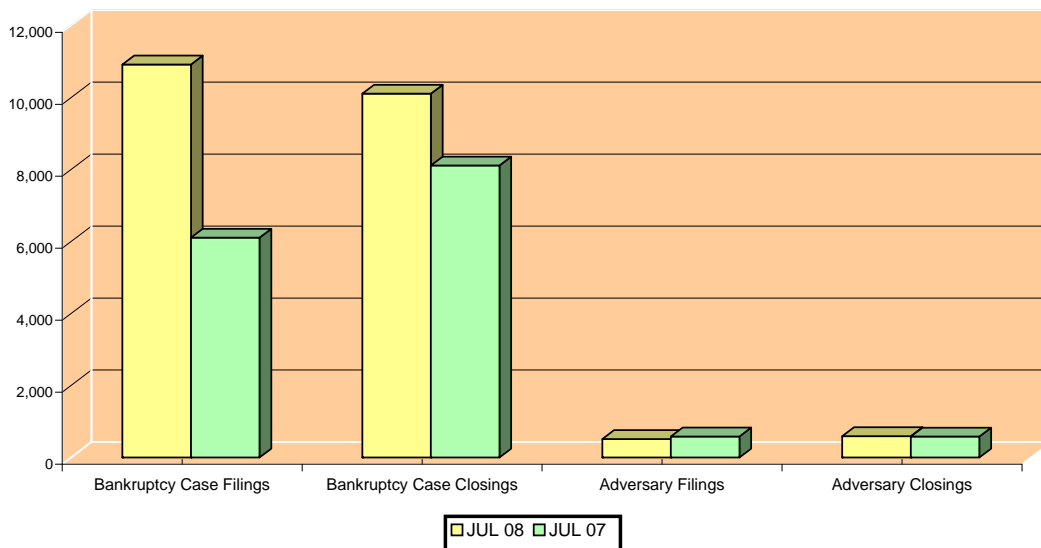
Filings and Closings for Palm Beach Division includes Indian River, Highlands, Martin,

St. Lucie & Okeechobee Counties

TOTAL PENDING CASELOAD BY JUDGE/CHAPTER



CALENDAR YEAR-TO-DATE COMPARISON



12-MONTH/THREE YEAR COMPARISON

