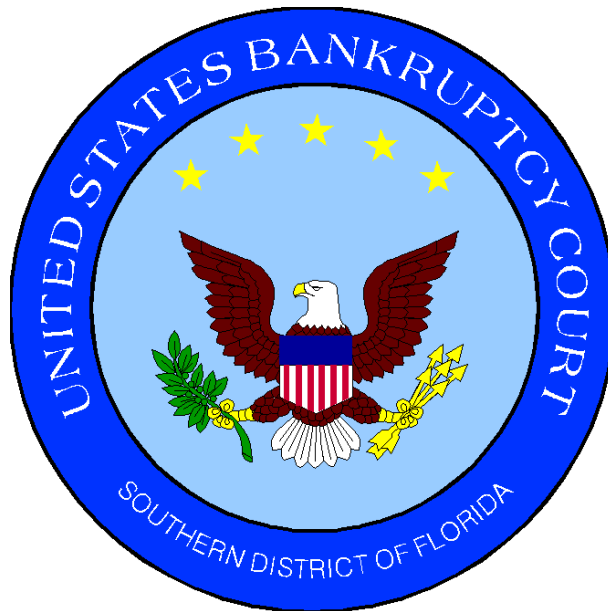


UNITED STATES BANKRUPTCY COURT

SOUTHERN DISTRICT OF FLORIDA

*51 S.W. 1st Avenue
Room 1401
Miami, FL 33130*

*Katherine Gould-Feldman
Clerk of Court*



MONTHLY STATISTICAL REPORT

March 2008

MONTHLY STATISTICAL REPORT

TABLE OF CONTENTS

	<i>page</i>
<i>I. MONTHLY SARD SUMMARY REPORT</i>	<i>2</i>
<i>II. BK CASE FILINGS SUMMARY REPORT</i>	<i>3</i>
<i>III. BK CASE CLOSINGS SUMMARY REPORT</i>	<i>4</i>
<i>IV. AP CASE FILINGS SUMMARY REPORT</i>	<i>3</i>
<i>V. AP CASE CLOSINGS SUMMARY REPORT</i>	<i>4</i>
<i>VI. BK PRO SE CASES FILING SUMMARY REPORT</i>	<i>5</i>
<i>VII. PENDING CASELOAD REPORT BY JUDGE/CHAPTER</i>	<i>6</i>
<i>VIII. DIVISIONAL CASELOAD REPORT</i>	<i>7</i>
<i>IX. CASE FILING BREAKDOWN BY COUNTY</i>	<i>8</i>
<i>X. BREAKDOWN BY NATURE OF DEBTOR</i>	<i>9</i>
<i>XI. BREAKDOWN BY COUNTY / NATURE - CONSUMER</i>	<i>10</i>
<i>XII. BREAKDOWN BY COUNTY / NATURE - BUSINESS</i>	<i>11</i>
<i>XIII. SUMMARIES AND GRAPHS</i>	<i>12 - 16</i>

**MARCH 2008
MONTHLY SARD REPORT SUMMARY**

2

I. BC101 REPORT OF BANKRUPTCY CASES

	AJC	LMI	RAM	JKO	RBR	PGH	DHA	TOTAL
Pending Prior Month	2,723	1,831	2,794	2,199	2,345	3,725	2	15,619
Cases Filed	214	212	213	236	232	400	0	1,507
Reopened	9	8	8	13	8	4	0	50
Split Cases	1	0	0	0	0	0	0	1
Trans. In	0	0	0	0	0	0	0	0
Reassigned To	0	0	0	0	1	1	0	2
Trans. Out	0	0	0	0	0	0	0	0
Reassigned From	1	0	0	0	0	0	1	2
Cases Closed	206	175	249	173	212	220	0	1,235
Cases Pending	2,740	1,876	2,766	2,275	2,374	3,910	1	15,942

II. BC109 REPORT OF ADVERSARY CASES

	AJC	LMI	RAM	JKO	RBR	PGH	DHA	TOTAL
Pending Prior Month	130	60	33	152	128	94	0	597
Cases Filed	12	2	7	7	33	17	0	78
Trans. In	0	0	0	0	0	0	0	0
Reassigned To	0	0	0	0	0	0	0	0
Cases Reopened	0	0	0	0	0	1	0	1
Cases Closed	26	9	10	18	4	10	0	77
Trans. Out	0	0	0	0	0	0	0	0
Reassigned From	0	0	0	0	0	0	0	0
Cases Pending	116	53	30	141	157	102	0	599

IV. MONTHLY REPORT OF TRIALS AND OTHER ACTIVITY

	Contested Proceedings	Miscellaneous Proceedings	Total Hours in Court
AJC	7	20	27
PGH	15	12	27
LMI	17	30	47
RAM	11	24	35
JKO	16	19	35
RBR	4	17	21
DHA	2	11	13
Total	72	133	192

Cases Summary Report Group By Person Office
New Filed: 3/1/2008 - 3/31/2008

Judge	Office	Ch7	Ch9	Ch11	Ch12	Ch13	Ch15	304	Total	Adv	Mis
AJC	Miami	164	0	3	0	47	0	0	214	12	0
LMI	Miami	163	0	1	0	48	0	0	212	2	0
RAM	Miami	163	0	0	0	50	0	0	213	7	0
JKO	Broward	162	0	2	0	72	0	0	236	7	0
RBR	Broward	157	0	3	0	72	0	0	232	33	0
PGH	WPB	288	0	3	0	109	0	0	400	17	0
Total		1097	0	12	0	398	0	0	1507	78	0

Cases Summary Report Group By Person Office
Closed: 3/1/2008 - 3/31/2008

4

Judge	Office	Ch7	Ch9	Ch11	Ch12	Ch13	Ch15	304	Total	Adv	Mis
AJC	Miami	105	0	0	0	101	0	0	206	26	0
LMI	Miami	120	0	0	0	55	0	0	175	9	0
RAM	Miami	126	0	16	0	107	0	0	249	10	0
JKO	Broward	115	0	0	0	58	0	0	173	18	0
RBR	Broward	132	0	1	0	79	0	0	212	4	0
PGH	WPB	147	0	1	0	72	0	0	220	10	0
Total		745	0	18	0	472	0	0	1235	77	0

Cases Summary Report Group By Person Office
Pro Se: 3/1/2008 - 3/31/2008

5

Judge	Office	Ch7	Ch9	Ch11	Ch12	Ch13	Ch15	304	Total	Adv	Mis
AJC	Miami	2	0	0	0	13	0	0	15	0	0
LMI	Miami	5	0	0	0	8	0	0	13	0	0
RAM	Miami	4	0	0	0	12	0	0	16	1	0
JKO	Broward	18	0	0	0	6	0	0	24	0	0
RBR	Broward	20	0	0	0	2	0	0	22	22	0
PGH	WPB	23	0	0	0	7	0	0	30	0	0
Total		72	0	0	0	48	0	0	120	23	0

PENDING CASELOAD REPORTS BY JUDGE/CHAPTER
MARCH 2008

AJC	7	11	12	13	15	304	TOTALS
Pending Prior Month	882	73	1	1,763	0	4	2,723
Cases Filed	164	3	0	47	0	0	214
Reopened	7	0	0	2	0	0	9
Split Cases	1	0	0	0	0	0	1
Transferred In	0	0	0	0	0	0	0
Reassigned To	0	0	0	0	0	0	0
Converted To	4	0	0	0	0	0	4
Transferred Out	0	0	0	0	0	0	0
Reassigned From	1	0	0	0	0	0	1
Converted From	0	0	0	4	0	0	4
Cases Closed	105	0	0	101	0	0	206
Total Pending	952	76	1	1,707	0	4	2,740
PGH	7	11	12	13	15	304	TOTALS
Pending Prior Month	1,544	119	1	2,061	0	0	3,725
Cases Filed	288	3	0	109	0	0	400
Reopened	3	0	0	1	0	0	4
Split Cases	0	0	0	0	0	0	0
Transferred In	0	0	0	0	0	0	0
Reassigned To	1	0	0	0	0	0	1
Converted To	3	0	0	3	0	0	6
Transferred Out	0	0	0	0	0	0	0
Reassigned From	0	0	0	0	0	0	0
Converted From	3	0	0	3	0	0	6
Cases Closed	147	1	0	72	0	0	220
Total Pending	1,689	121	1	2,099	0	0	3,910
LMI	7	11	12	13	15	304	TOTALS
Pending Prior Month	845	54	1	929	2	0	1,831
Cases Filed	163	1	0	48	0	0	212
Reopened	6	0	0	2	0	0	8
Split Cases	0	0	0	0	0	0	0
Transferred In	0	0	0	0	0	0	0
Reassigned To	0	0	0	0	0	0	0
Converted To	7	0	0	0	0	0	7
Transferred Out	0	0	0	0	0	0	0
Reassigned From	0	0	0	0	0	0	0
Converted From	0	4	0	3	0	0	7
Cases Closed	120	0	0	55	0	0	175
Total Pending	901	51	1	921	2	0	1,876
RAM	7	11	12	13	15	304	TOTALS
Pending Prior Month	913	61	0	1,817	1	2	2,794
Cases Filed	163	0	0	50	0	0	213
Reopened	6	0	0	2	0	0	8
Split Cases	0	0	0	0	0	0	0
Transferred In	0	0	0	0	0	0	0
Reassigned To	0	0	0	0	0	0	0
Converted To	0	0	0	0	0	0	0
Transferred Out	0	0	0	0	0	0	0
Reassigned From	0	0	0	0	0	0	0
Converted From	0	0	0	0	0	0	0
Cases Closed	126	16	0	107	0	0	249
Total Pending	956	45	0	1,762	1	2	2,766
JKO	7	11	12	13	15	304	TOTALS
Pending Prior Month	850	93	0	1,256	0	0	2,199
Cases Filed	162	2	0	72	0	0	236
Reopened	12	0	0	1	0	0	13
Split Cases	0	0	0	0	0	0	0
Transferred In	0	0	0	0	0	0	0
Reassigned To	0	0	0	0	0	0	0
Converted To	1	0	0	1	0	0	2
Transferred Out	0	0	0	0	0	0	0
Reassigned From	0	0	0	0	0	0	0
Converted From	1	0	0	1	0	0	2
Cases Closed	115	0	0	58	0	0	173
Total Pending	909	95	0	1,271	0	0	2,275
RBR	7	11	12	13	15	304	TOTALS
Pending Prior Month	924	108	0	1,313	0	0	2,345
Cases Filed	157	3	0	72	0	0	232
Reopened	6	0	0	2	0	0	8
Split Cases	0	0	0	0	0	0	0
Transferred In	0	0	0	0	0	0	0
Reassigned To	1	0	0	0	0	0	1
Converted To	7	0	0	0	0	0	7
Transferred Out	0	0	0	0	0	0	0
Reassigned From	0	0	0	0	0	0	0
Converted From	0	0	0	7	0	0	7
Cases Closed	132	1	0	79	0	0	212
Total Pending	963	110	0	1,301	0	0	2,374
DHA	7	11	12	13	15	304	TOTALS
Pending Prior Month	2	2	2	2	2	2	12
Cases Filed	0	0	0	0	0	0	0
Reopened	0	0	0	0	0	0	0
Split Cases	0	0	0	0	0	0	0
Transferred In	0	0	0	0	0	0	0
Reassigned To	0	0	0	0	0	0	0
Converted To	0	0	0	0	0	0	0
Transferred Out	0	0	0	0	0	0	0
Reassigned From	1	0	0	0	0	0	1
Converted From	0	0	0	0	0	0	0
Cases Closed	0	0	0	0	0	0	0
Total Pending	1	2	2	2	2	2	11
GRAND TOTAL:	6,371	500	5	9,063	5	8	15,952

AJC PENDING CASE SUMMARY

CHAPTER	DADE DIVISION	BROWARD DIVISION	PALM BEACH DIVISION	TOTAL
7	952	0	0	952
11	76	0	0	76
12	1	0	0	1
13	1,707	0	0	1,707
15	0	0	0	0
304	4	0	0	4
TOTALS	2,740	0	0	2,740

LMI PENDING CASE SUMMARY

CHAPTER	DADE DIVISION	BROWARD DIVISION	PALM BEACH DIVISION	TOTAL
7	901	0	0	901
11	51	0	0	51
12	1	0	0	1
13	921	0	0	921
15	2	0	0	2
304	0	0	0	0
TOTALS	1,876	0	0	1,876

PGH PENDING CASE SUMMARY

CHAPTER	DADE DIVISION	BROWARD DIVISION	PALM BEACH DIVISION	TOTAL
7	0	2	1,687	1,689
11	1	1	119	121
12	0	0	1	1
13	0	0	2,099	2,099
15	0	0	0	0
304	0	0	0	0
TOTALS	1	3	3,906	3,910

RAM PENDING CASE SUMMARY

CHAPTER	DADE DIVISION	BROWARD DIVISION	PALM BEACH DIVISION	TOTAL
7	954	0	2	956
11	44	0	1	45
12	0	0	0	0
13	1,762	0	0	1,762
15	1	0	0	1
304	2	0	0	2
TOTALS	2,763	0	3	2,766

JKO PENDING CASE SUMMARY

CHAPTER	DADE DIVISION	BROWARD DIVISION	PALM BEACH DIVISION	TOTAL
7	0	906	3	909
11	1	94	0	95
12	0	0	0	0
13	0	1,271	0	1,271
15	0	0	0	0
304	0	0	0	0
TOTALS	1	2,271	3	2,275

RBR PENDING CASE SUMMARY

CHAPTER	DADE DIVISION	BROWARD DIVISION	PALM BEACH DIVISION	TOTAL
7	2	959	2	963
11	0	109	1	110
12	0	0	0	0
13	0	1,301	0	1,301
15	0	0	0	0
304	0	0	0	0
TOTALS	2	2,369	3	2,374

DHA PENDING CASE SUMMARY

CHAPTER	DADE DIVISION	BROWARD DIVISION	PALM BEACH DIVISION	TOTAL
7	0	0	1	1
11	0	0	0	0
12	0	0	0	0
13	0	0	0	0
15	0	0	0	0
304	0	0	0	0
TOTALS	0	0	1	1

DISTRICT TOTALS	7,383	4,643	3,916	15,942
------------------------	--------------	--------------	--------------	---------------

CASE FILING SUMMARY BY COUNTY

DADE COUNTY - 12025

	7	11	12	13	15	TOTAL
AJC	158	3	0	46	0	207
PGH	0	0	0	0	0	0
LMI	161	1	0	47	0	209
RAM	161	0	0	50	0	211
JKO	0	0	0	0	0	0
RBR	0	0	0	0	0	0
Sub-Total	480	4	0	143	0	627

MONROE COUNTY - 12087

	7	11	12	13	15	TOTAL
AJC	7	0	0	1	0	8
PGH	0	0	0	0	0	0
LMI	2	0	0	1	0	3
RAM	2	0	0	0	0	2
JKO	0	0	0	0	0	0
RBR	0	0	0	0	0	0
Sub-Total	11	0	0	2	0	13
						Division Total
						640

BROWARD COUNTY - 12011

	7	11	12	13	15	TOTAL
AJC	0	0	0	0	0	0
PGH	0	0	0	0	0	0
LMI	0	0	0	0	0	0
RAM	0	0	0	0	0	0
JKO	162	2	0	72	0	236
RBR	157	3	0	72	0	232
Sub-Total	319	5	0	144	0	468
						Division Total
						468

HIGHLANDS COUNTY - 12055

	7	11	12	13	15	TOTAL
AJC	0	0	0	0	0	0
PGH	7	0	0	1	0	8
LMI	0	0	0	0	0	0
RAM	0	0	0	0	0	0
JKO	0	0	0	0	0	0
RBR	0	0	0	0	0	0
Sub-Total	7	0	0	1	0	8

INDIAN RIVER COUNTY - 12061

	7	11	12	13	15	TOTAL
AJC	0	0	0	0	0	0
PGH	15	0	0	3	0	18
LMI	0	0	0	0	0	0
RAM	0	0	0	0	0	0
JKO	0	0	0	0	0	0
RBR	0	0	0	0	0	0
Sub-Total	15	0	0	3	0	18

MARTIN COUNTY - 12085

	7	11	12	13	15	TOTAL
AJC	0	0	0	0	0	0
PGH	19	0	0	8	0	27
LMI	0	0	0	0	0	0
RAM	0	0	0	0	0	0
JKO	0	0	0	0	0	0
RBR	0	0	0	0	0	0
Sub-Total	19	0	0	8	0	27

OKEECHOBEE COUNTY - 12093

	7	11	12	13	15	TOTAL
AJC	0	0	0	0	0	0
PGH	7	0	0	6	0	13
LMI	0	0	0	0	0	0
RAM	0	0	0	0	0	0
JKO	0	0	0	0	0	0
RBR	0	0	0	0	0	0
Sub-Total	7	0	0	6	0	13

PALM BEACH COUNTY - 12099

	7	11	12	13	15	TOTAL
AJC	0	0	0	0	0	0
PGH	166	3	0	63	0	232
LMI	0	0	0	0	0	0
RAM	0	0	0	0	0	0
JKO	0	0	0	0	0	0
RBR	0	0	0	0	0	0
Sub-Total	166	3	0	63	0	232

ST. LUCIE - 12111

	7	11	12	13	15	TOTAL
AJC	0	0	0	0	0	0
PGH	74	0	0	28	0	102
LMI	0	0	0	0	0	0
RAM	0	0	0	0	0	0
JKO	0	0	0	0	0	0
RBR	0	0	0	0	0	0
Sub-Total	74	0	0	28	0	102
						Division Total
						400

GRAND TOTAL	1098	12	0	398	0	1508
--------------------	-------------	-----------	----------	------------	----------	-------------

MARCH 2008
CASE FILING SUMMARY BY NATURE OF DEBTOR/DIVISION

CHAPTER	BUSINESS				CONSUMER				TOTAL
	DADE	BROWARD	PALM BCH	DIV. TOTAL	DADE	BROWARD	PALM BCH	DIV. TOTAL	
7	27	19	16	62	464	300	272	1036	1098
11	4	4	3	11	0	1	0	1	12
12	0	0	0	0	0	0	0	0	0
13	3	2	4	9	142	142	105	389	398
15	0	0	0	0	0	0	0	0	0
TOTAL	34	25	23	82	606	443	377	1426	1508

DIVISIONAL BUSINESS CASE FILING SUMMARY

DADE DIVISION

CHAPTER	AJC	PGH	LMI	RAM	JKO	RBR	TOTAL
7	9	0	8	10	0	0	27
11	3	0	1	0	0	0	4
12	0	0	0	0	0	0	0
13	1	0	0	2	0	0	3
15	0	0	0	0	0	0	0
Sub-Total	13	0	9	12	0	0	34

BROWARD DIVISION

CHAPTER	AJC	PGH	LMI	RAM	JKO	RBR	TOTAL
7	0	0	0	0	13	6	19
11	0	0	0	0	2	2	4
12	0	0	0	0	0	0	0
13	0	0	0	0	2	0	2
15	0	0	0	0	0	0	0
Sub-Total	0	0	0	0	17	8	25

PALM BEACH DIVISION

CHAPTER	AJC	PGH	LMI	RAM	JKO	RBR	TOTAL
7	0	16	0	0	0	0	16
11	0	3	0	0	0	0	3
12	0	0	0	0	0	0	0
13	0	4	0	0	0	0	4
15	0	0	0	0	0	0	0
Sub-Total	0	23	0	0	0	0	23
GRAND TOTAL	13	23	9	12	17	8	82

DIVISIONAL CONSUMER CASE FILING SUMMARY

DADE DIVISION

CHAPTER	AJC	PGH	LMI	RAM	JKO	RBR	TOTAL
7	156	0	155	153	0	0	464
11	0	0	0	0	0	0	0
12	0	0	0	0	0	0	0
13	46	0	48	48	0	0	142
15	0	0	0	0	0	0	0
Sub-Total	202	0	203	201	0	0	606

BROWARD DIVISION

CHAPTER	AJC	PGH	LMI	RAM	JKO	RBR	TOTAL
7	0	0	0	0	149	151	300
11	0	0	0	0	0	1	1
12	0	0	0	0	0	0	0
13	0	0	0	0	70	72	142
15	0	0	0	0	0	0	0
Sub-Total	0	0	0	0	219	224	443

PALM BEACH DIVISION

CHAPTER	AJC	PGH	LMI	RAM	JKO	RBR	TOTAL
7	0	272	0	0	0	0	272
11	0	0	0	0	0	0	0
12	0	0	0	0	0	0	0
13	0	105	0	0	0	0	105
15	0	0	0	0	0	0	0
Sub-Total	0	377	0	0	0	0	377
GRAND TOTAL	202	377	203	201	219	224	1,426

CASE FILING SUMMARY BY COUNTY / CONSUMER - BUSINESS
CONSUMERS

DADE COUNTY - 12025

	7	11	12	13	15	TOTAL
AJC	150	0	0	45	0	195
PGH	0	0	0	0	0	0
LMI	154	0	0	47	0	201
RAM	151	0	0	48	0	199
JKO	0	0	0	0	0	0
RBR	0	0	0	0	0	0
Sub-Total	455	0	0	140	0	595

MONROE COUNTY - 12087

	7	11	12	13	15	TOTAL
AJC	6	0	0	1	0	7
PGH	0	0	0	0	0	0
LMI	1	0	0	1	0	2
RAM	2	0	0	0	0	2
JKO	0	0	0	0	0	0
RBR	0	0	0	0	0	0
Sub-Total	9	0	0	2	0	11

Division Total 606

BROWARD COUNTY - 12011

	7	11	12	13	15	TOTAL
AJC	0	0	0	0	0	0
PGH	0	0	0	0	0	0
LMI	0	0	0	0	0	0
RAM	0	0	0	0	0	0
JKO	149	0	0	70	0	219
RBR	151	1	0	72	0	224
Sub-Total	300	1	0	142	0	443

Division Total 443

HIGHLANDS COUNTY - 12055

	7	11	12	13	15	TOTAL
AJC	0	0	0	0	0	0
PGH	7	0	0	1	0	8
LMI	0	0	0	0	0	0
RAM	0	0	0	0	0	0
JKO	0	0	0	0	0	0
RBR	0	0	0	0	0	0
Sub-Total	7	0	0	1	0	8

INDIAN RIVER COUNTY - 12061

	7	11	12	13	15	TOTAL
AJC	0	0	0	0	0	0
PGH	14	0	0	2	0	16
LMI	0	0	0	0	0	0
RAM	0	0	0	0	0	0
JKO	0	0	0	0	0	0
RBR	0	0	0	0	0	0
Sub-Total	14	0	0	2	0	16

MARTIN COUNTY - 12085

	7	11	12	13	15	TOTAL
AJC	0	0	0	0	0	0
PGH	17	0	0	8	0	25
LMI	0	0	0	0	0	0
RAM	0	0	0	0	0	0
JKO	0	0	0	0	0	0
RBR	0	0	0	0	0	0
Sub-Total	17	0	0	8	0	25

OKEECHOBEE COUNTY - 12093

	7	11	12	13	15	TOTAL
AJC	0	0	0	0	0	0
PGH	7	0	0	6	0	13
LMI	0	0	0	0	0	0
RAM	0	0	0	0	0	0
JKO	0	0	0	0	0	0
RBR	0	0	0	0	0	0
Sub-Total	7	0	0	6	0	13

PALM BEACH COUNTY - 12099

	7	11	12	13	15	TOTAL
AJC	0	0	0	0	0	0
PGH	156	0	0	61	0	217
LMI	0	0	0	0	0	0
RAM	0	0	0	0	0	0
JKO	0	0	0	0	0	0
RBR	0	0	0	0	0	0
Sub-Total	156	0	0	61	0	217

ST. LUCIE - 12111

	7	11	12	13	15	TOTAL
AJC	0	0	0	0	0	0
PGH	71	0	0	27	0	98
LMI	0	0	0	0	0	0
RAM	0	0	0	0	0	0
JKO	0	0	0	0	0	0
RBR	0	0	0	0	0	0
Sub-Total	71	0	0	27	0	98

Division Total 377

GRAND TOTAL	1036	1	0	389	0	1426
--------------------	-------------	----------	----------	------------	----------	-------------

CASE FILING SUMMARY BY COUNTY / CONSUMER - BUSINESS

BUSINESS

DADE COUNTY - 12025

	7	11	12	13	15	TOTAL
AJC	8	3	0	1	0	12
PGH	0	0	0	0	0	0
LMI	7	1	0	0	0	8
RAM	10	0	0	2	0	12
JKO	0	0	0	0	0	0
RBR	0	0	0	0	0	0
Sub-Total	25	4	0	3	0	32

MONROE COUNTY - 12087

	7	11	12	13	15	TOTAL
AJC	1	0	0	0	0	1
PGH	0	0	0	0	0	0
LMI	1	0	0	0	0	1
RAM	0	0	0	0	0	0
JKO	0	0	0	0	0	0
RBR	0	0	0	0	0	0
Sub-Total	2	0	0	0	0	2

Division Total 34

BROWARD COUNTY - 12011

	7	11	12	13	15	TOTAL
AJC	0	0	0	0	0	0
PGH	0	0	0	0	0	0
LMI	0	0	0	0	0	0
RAM	0	0	0	0	0	0
JKO	13	2	0	2	0	17
RBR	6	2	0	0	0	8
Sub-Total	19	4	0	2	0	25

Division Total 25

HIGHLANDS COUNTY - 12055

	7	11	12	13	15	TOTAL
AJC	0	0	0	0	0	0
PGH	0	0	0	0	0	0
LMI	0	0	0	0	0	0
RAM	0	0	0	0	0	0
JKO	0	0	0	0	0	0
RBR	0	0	0	0	0	0
Sub-Total	0	0	0	0	0	0

INDIAN RIVER COUNTY - 12061

	7	11	12	13	15	TOTAL
AJC	0	0	0	0	0	0
PGH	1	0	0	1	0	2
LMI	0	0	0	0	0	0
RAM	0	0	0	0	0	0
JKO	0	0	0	0	0	0
RBR	0	0	0	0	0	0
Sub-Total	1	0	0	1	0	2

MARTIN COUNTY - 12085

	7	11	12	13	15	TOTAL
AJC	0	0	0	0	0	0
PGH	2	0	0	0	0	2
LMI	0	0	0	0	0	0
RAM	0	0	0	0	0	0
JKO	0	0	0	0	0	0
RBR	0	0	0	0	0	0
Sub-Total	2	0	0	0	0	2

OKEECHOBEE COUNTY - 12093

	7	11	12	13	15	TOTAL
AJC	0	0	0	0	0	0
PGH	0	0	0	0	0	0
LMI	0	0	0	0	0	0
RAM	0	0	0	0	0	0
JKO	0	0	0	0	0	0
RBR	0	0	0	0	0	0
Sub-Total	0	0	0	0	0	0

PALM BEACH COUNTY - 12099

	7	11	12	13	15	TOTAL
AJC	0	0	0	0	0	0
PGH	10	3	0	2	0	15
LMI	0	0	0	0	0	0
RAM	0	0	0	0	0	0
JKO	0	0	0	0	0	0
RBR	0	0	0	0	0	0
Sub-Total	10	3	0	2	0	15

ST. LUCIE - 12111

	7	11	12	13	15	TOTAL
AJC	0	0	0	0	0	0
PGH	3	0	0	1	0	4
LMI	0	0	0	0	0	0
RAM	0	0	0	0	0	0
JKO	0	0	0	0	0	0
RBR	0	0	0	0	0	0
Sub-Total	3	0	0	1	0	4

Division Total 23

GRAND TOTAL	62	11	0	9	0	82
--------------------	-----------	-----------	----------	----------	----------	-----------

2008 COMPARISON OF BANKRUPTCY FILINGS

AJC	CH 7	CH 11	CH 12	CH 13	CH 15	TOTAL
JAN	118	10	0	39	0	167
FEB	140	1	0	43	0	184
MAR	165	3	0	47	0	215
APR	0	0	0	0	0	0
MAY	0	0	0	0	0	0
JUN	0	0	0	0	0	0
JUL	0	0	0	0	0	0
AUG	0	0	0	0	0	0
SEP	0	0	0	0	0	0
OCT	0	0	0	0	0	0
NOV	0	0	0	0	0	0
DEC	0	0	0	0	0	0
TOTALS	423	14	0	129	0	566

PGH	CH 7	CH 11	CH 12	CH 13	CH 15	TOTAL
JAN	198	11	0	95	0	304
FEB	234	3	0	92	0	329
MAR	288	3	0	109	0	400
APR	0	0	0	0	0	0
MAY	0	0	0	0	0	0
JUN	0	0	0	0	0	0
JUL	0	0	0	0	0	0
AUG	0	0	0	0	0	0
SEP	0	0	0	0	0	0
OCT	0	0	0	0	0	0
NOV	0	0	0	0	0	0
DEC	0	0	0	0	0	0
TOTALS	720	17	0	296	0	1033

LMI	CH 7	CH 11	CH 12	CH 13	CH 15	TOTAL
JAN	121	1	0	41	1	164
FEB	141	3	1	41	0	186
MAR	163	1	0	48	0	212
APR	0	0	0	0	0	0
MAY	0	0	0	0	0	0
JUN	0	0	0	0	0	0
JUL	0	0	0	0	0	0
AUG	0	0	0	0	0	0
SEP	0	0	0	0	0	0
OCT	0	0	0	0	0	0
NOV	0	0	0	0	0	0
DEC	0	0	0	0	0	0
TOTALS	425	5	1	130	1	562

RAM	CH 7	CH 11	CH 12	CH 13	CH 15	TOTAL
JAN	122	2	0	42	0	166
FEB	136	4	0	40	0	180
MAR	163	0	0	50	0	213
APR	0	0	0	0	0	0
MAY	0	0	0	0	0	0
JUN	0	0	0	0	0	0
JUL	0	0	0	0	0	0
AUG	0	0	0	0	0	0
SEP	0	0	0	0	0	0
OCT	0	0	0	0	0	0
NOV	0	0	0	0	0	0
DEC	0	0	0	0	0	0
TOTALS	421	6	0	132	0	559

JKO	CH 7	CH 11	CH 12	CH 13	CH 15	TOTAL
JAN	108	40	0	60	0	208
FEB	129	0	0	68	0	197
MAR	162	2	0	72	0	236
APR	0	0	0	0	0	0
MAY	0	0	0	0	0	0
JUN	0	0	0	0	0	0
JUL	0	0	0	0	0	0
AUG	0	0	0	0	0	0
SEP	0	0	0	0	0	0
OCT	0	0	0	0	0	0
NOV	0	0	0	0	0	0
DEC	0	0	0	0	0	0
TOTALS	399	42	0	200	0	641

RBR	CH 7	CH 11	CH 12	CH 13	CH 15	TOTAL
JAN	109	29	0	60	0	198
FEB	129	3	0	62	0	194
MAR	157	3	0	72	0	232
APR	0	0	0	0	0	0
MAY	0	0	0	0	0	0
JUN	0	0	0	0	0	0
JUL	0	0	0	0	0	0
AUG	0	0	0	0	0	0
SEP	0	0	0	0	0	0
OCT	0	0	0	0	0	0
NOV	0	0	0	0	0	0
DEC	0	0	0	0	0	0
TOTALS	395	35	0	194	0	624

**2008 YEAR-TO-DATE COMPARISON OF BANKRUPTCY CASE FILINGS
BY JUDGE**

	AJC	PGH	LMI	RAM	JKO	RBR	TOTAL
JAN	167	304	164	166	208	198	1207
FEB	184	329	186	180	197	194	1270
MAR	215	400	212	213	236	232	1508
APR	0	0	0	0	0	0	0
MAY	0	0	0	0	0	0	0
JUN	0	0	0	0	0	0	0
JUL	0	0	0	0	0	0	0
AUG	0	0	0	0	0	0	0
SEP	0	0	0	0	0	0	0
OCT	0	0	0	0	0	0	0
NOV	0	0	0	0	0	0	0
DEC	0	0	0	0	0	0	0
TOTALS	566	1033	562	559	641	624	3985
% of Total	14.20	25.92	14.10	14.03	16.09	15.66	

**2008 YEAR-TO-DATE COMPARISON OF BANKRUPTCY CASE FILINGS
BY JUDGE/CHAPTER**

	CH 7	CH 11	CH 12	CH 13	CH 15	TOTAL
AJC	423	14	0	129	0	566
PGH	720	17	0	296	0	1033
LMI	425	5	1	130	1	562
RAM	421	6	0	132	0	559
JKO	399	42	0	200	0	641
RBR	395	35	0	194	0	624
TOTALS	2783	119	1	1081	1	3985

CALENDAR YEAR-TO-DATE COMPARISON

	ENDING MAR 08	ENDING MAR 07	PERCENT CHANGE
Bankruptcy Case Filings	3,984	2,311	72.39
Bankruptcy Case Closings	4,174	3,376	23.64
Adversary Filings	253	174	45.40
Adversary Closings	259	298	-13.09

12-MONTH/THREE YEAR COMPARISON

	ENDING MAR 08	ENDING MAR 07	ENDING MAR 06	% CHANGE 2008 / 2007	% CHANGE 2008 / 2006
Bankruptcy Case Filings	13,428	8,164	31,482	64.48	-57.35
Bankruptcy Case Closings	14,876	15,134	35,741	-1.70	-58.38
Adversary Filings	980	986	1,441	-0.61	-31.99
Adversary Closings	958	1,278	1,345	-25.04	-28.77

MONTHLY COMPARISON

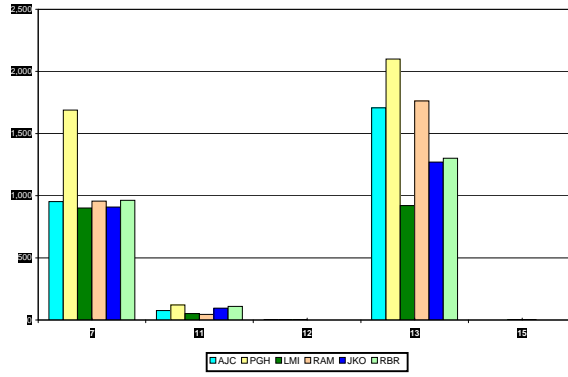
	MAR 08	MAR 07	PERCENT CHANGE
Bankruptcy Case Filings	1,507	939	60.49
Bankruptcy Case Closings	1,235	1,242	-0.56
Adversary Filings	78	59	32.20
Adversary Closings	77	76	1.32

Filings and Closings for Dade Division includes Monroe County

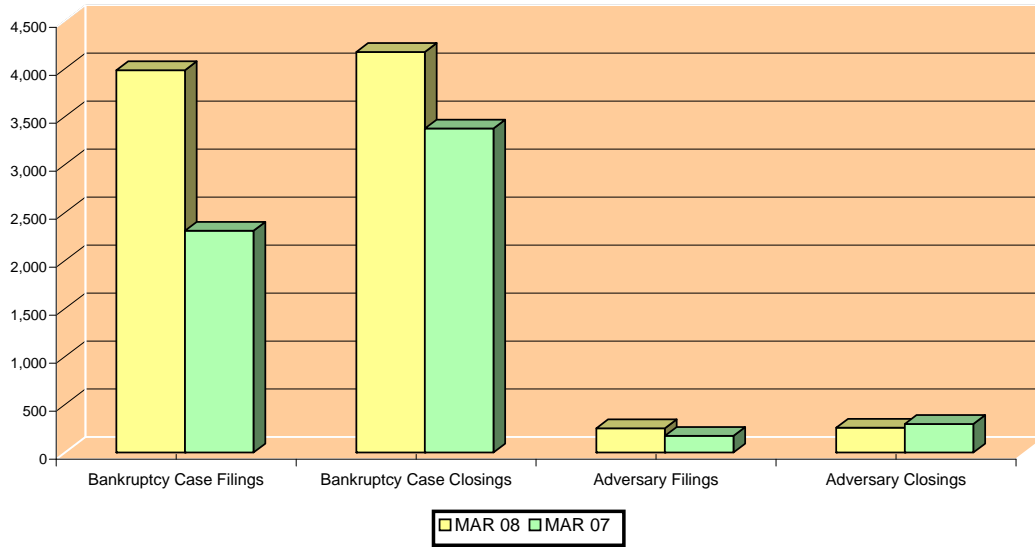
Filings and Closings for Palm Beach Division includes Indian River, Highlands, Martin,

St. Lucie & Okeechobee Counties

TOTAL PENDING CASELOAD BY JUDGE/CHAPTER



CALENDAR YEAR-TO-DATE COMPARISON



12-MONTH/THREE YEAR COMPARISON

