

UNITED STATES BANKRUPTCY COURT

SOUTHERN DISTRICT OF FLORIDA

*51 S.W. 1st Avenue
Room 1401
Miami, FL 33130*

*Karen Eddy
Clerk of Court*



MONTHLY STATISTICAL REPORT
MARCH 2005

MONTHLY STATISTICAL REPORT

TABLE OF CONTENTS

	<i>page</i>
<i>I. MONTHLY SARD SUMMARY REPORT</i>	<i>2</i>
<i>II. BK CASE FILINGS SUMMARY REPORT</i>	<i>3</i>
<i>III. BK CASE CLOSINGS SUMMARY REPORT</i>	<i>4</i>
<i>IV. AP CASE FILINGS SUMMARY REPORT</i>	<i>5</i>
<i>V. AP CASE CLOSINGS SUMMARY REPORT</i>	<i>6</i>
<i>VI. BK PRO SE CASES FILING SUMMARY REPORT</i>	<i>7</i>
<i>VII. PENDING CASELOAD REPORT BY JUDGE/CHAPTER</i>	<i>8</i>
<i>VIII. DIVISIONAL CASELOAD REPORT</i>	<i>9</i>
<i>IX. CASE FILING BREAKDOWN BY COUNTY</i>	<i>10</i>
<i>X. BREAKDOWN BY NATURE OF DEBTOR</i>	<i>11</i>
<i>XI. BREAKDOWN BY COUNTY / NATURE - CONSUMER</i>	<i>12</i>
<i>XII. BREAKDOWN BY COUNTY / NATURE - BUSINESS</i>	<i>13</i>
<i>XIII. SUMMARIES AND GRAPHS</i>	<i>14 - 18</i>

MARCH 2005
MONTHLY SARD REPORT SUMMARY

I. BC101 REPORT OF BANKRUPTCY CASES

	AJC	SHF	PGH	RAM	RBR	TOTAL
Pending Prior Month	6,517	4,226	3,650	6,561	5,297	26,251
Cases Filed	512	441	428	505	464	2,350
Reopened	15	10	9	13	16	63
Split Cases	1	2	0	0	1	4
Trans. In	0	0	0	0	0	0
Reassigned To	0	0	1	0	0	1
Trans. Out	0	0	0	0	0	0
Reassigned From	0	1	0	0	0	1
Cases Closed	400	331	349	332	463	1,875
Cases Pending	6,645	4,347	3,739	6,747	5,315	26,793

II. BC109 REPORT OF ADVERSARY CASES

	AJC	SHF	PGH	RAM	RBR	TOTAL
Pending Prior Month	166	146	150	193	94	749
Cases Filed	24	15	16	11	12	78
Trans. In	0	0	0	0	0	0
Reassigned To	0	0	0	0	0	0
Cases Reopened	0	1	0	0	0	1
Cases Closed	18	21	18	51	21	129
Reassigned From	0	0	0	0	0	0
Cases Pending	172	141	148	153	85	699

IV. MONTHLY REPORT OF TRIALS AND OTHER ACTIVITY

	Contested Proceedings	Miscellaneous Proceedings	Total Hours in Court
AJC	13	37	50
SHF	8	48	56
PGH	4	21	25
RAM	9	26	35
RBR	4	40	44
Total	38	172	210

UNITED STATES BANKRUPTCY COURT
Southern District of Florida

CASE FILINGS SUMMARY REPORT
For Cases Filed from 03/01/2005 to 03/31/2005
Run Date: 04/06/05

Run Time 11:35

Divisional Breakdown

	Dade					Broward					Palm Beach					
	Ch	7	11	12	13	304	7	11	12	13	304	7	11	12	13	304
AJC	434		1	0	77	0	0	0	0	0	0	0	0	0	0	0
SHF	0	0	0	0	0	0	0	0	0	0	350	2	0	89	0	
PGH	0	0	0	0	0	230	1	0	64	0	132	1	0	0	0	
RAM	429	0	0	0	76	0	0	0	0	0	0	0	0	0	0	
RBR	0	0	0	0	37	0	361	1	0	65	0	0	0	0	0	
<hr/>																
Tot	863	1	0	190	0	591	2	0	129	0	482	3	0	89	0	
Divisional Totals	1054					722					574					

Totals By Judge

	Chapter 7	Section 304	Chapter 11	Chapter 12	Chapter 13	Totals
AJC	434	0	1	0	77	512
SHF	350	0	2	0	89	441
PGH	362	0	2	0	64	428
RAM	429	0	0	0	76	505
RBR	361	0	1	0	102	464
<hr/>						
Totals	1936	0	6	0	408	

Grand Total: 2350

"TOTAL DOES NOT INCLUDE SPLIT, TRANSFERRED IN CASES AND INTRA-DISTRICT CASES FILED PRIOR TO THIS MONTH"

UNITED STATES BANKRUPTCY COURT
Southern District of Florida

CASE CLOSING SUMMARY REPORT
For Cases Closed from 03/01/2005 to 03/31/2005
Run Date: 04/04/05

Run Time 10:55

Divisional Breakdown

Ch	7	11	Dade				Broward					Palm Beach			
			12	13	304	7	11	12	13	304	7	11	12	13	304
AJC	321	4	0	75	0	0	0	0	0	0	0	0	0	0	0
SHF	1	0	0	0	0	0	0	0	0	0	259	0	0	71	0
PGH	1	0	0	0	0	144	1	0	113	0	89	1	0	0	0
RAM	277	1	0	54	0	0	0	0	0	0	0	0	0	0	0
RBR	2	0	0	78	0	252	5	0	126	0	0	0	0	0	0

Tot	602	5	0	207	0	396	6	0	239	0	348	1	0	71	0
Divisional Totals			814	641					420						

Totals By Judge

	Chapter 7	Section 304	Chapter 11	Chapter 12	Chapter 13	Totals
AJC	321	0	4	0	75	400
SHF	260	0	0	0	71	331
PGH	234	0	2	0	113	349
RAM	277	0	1	0	54	332
RBR	254	0	5	0	204	463

Totals	1346	0	12	0	517	
Grand Total:	1875					

UNITED STATES BANKRUPTCY COURT
Southern District of FloridaAdversary Proceedings Case Filing Report
For Cases Filed from 03/01/2005 to 03/31/2005
Run Time 13:32

Run Date: 04/04/05

Divisional Breakdown

	Dade	Broward	Palm Beach	Totals
AJC	24	0	0	24
SHF	0	0	15	15
PGH	0	8	8	16
RAM	11	0	0	11
RBR	1	11	0	12
<hr/>				
Totals	36	19	23	78

UNITED STATES BANKRUPTCY COURT
Southern District of FloridaAdversary Proceedings Case Closing Report
For Cases Closed from 03/01/2005 to 03/31/2005
Run Time 13:33

Run Date: 04/04/05

Divisional Breakdown

	Dade	Broward	Palm Beach	Totals
AJC	18	0	0	18
SHF	0	0	21	21
PGH	0	13	5	18
RAM	51	0	0	51
RBR	0	21	0	21
<hr/>				
Totals	69	34	26	129

UNITED STATES BANKRUPTCY COURT
SOUTHERN DISTRICT OF FLORIDA

BANKRUPTCY PRO SE CASES FILING SUMMARY REPORT
For Cases Filed from 03/01/2005 to 03/31/2005

Run Date: 04/04/05

Run Time 13:45

Ch	Dade					Broward					Palm Beach				
	7	11	12	13	304	7	11	12	13	304	7	11	12	13	304
AJC	22	1	0	4	0	0	0	0	0	0	0	0	0	0	0
SHF	0	0	0	0	0	0	0	0	0	0	61	0	0	10	0
PGH	0	0	0	0	0	38	0	0	10	0	28	0	0	0	0
RAM	14	0	0	12	0	0	0	0	0	0	0	0	0	0	0
RBR	0	0	0	12	0	82	0	0	6	0	0	0	0	0	0

Tot	36	1	0	28	0	120	0	0	16	0	89	0	0	10	0
Divisional Totals					65					136					99

	Totals By Judge					Totals
	Chapter 7	Section 304	Chapter 11	Chapter 12	Chapter 13	
AJC	22	0	1	0	4	27
SHF	61	0	0	0	10	71
PGH	66	0	0	0	10	76
RAM	14	0	0	0	12	26
RBR	82	0	0	0	18	100

Totals	245	0	1	0	54	300
Grand Total:						300

PENDING CASELOAD REPORTS BY JUDGE/CHAPTER
MARCH 2005

AJC	7	11	12	13	304	ACT	TOTALS
Pending Prior Month	1,871	80	1	4,563	2	0	6,517
Cases Filed	434	1	0	77	0	0	512
Reopened	10	0	0	5	0	0	15
Split Cases	0	0	0	1	0	0	1
Transferred In	0	0	0	0	0	0	0
Reassigned To	0	0	0	0	0	0	0
Converted To	8	0	0	3	0	0	11
Transferred Out	0	0	0	0	0	0	0
Reassigned From	0	0	0	0	0	0	0
Converted From	3	0	0	8	0	0	11
Cases Closed	321	4	0	75	0	0	400
Total Pending	1,999	77	1	4,566	2	0	6,645

SHF	7	11	12	13	304	ACT	TOTALS
Pending Prior Month	1,639	28	0	2,554	5	0	4,226
Cases Filed	350	2	0	89	0	0	441
Reopened	8	0	0	2	0	0	10
Split Cases	1	0	0	1	0	0	2
Transferred In	0	0	0	0	0	0	0
Reassigned To	0	0	0	0	0	0	0
Converted To	14	0	0	2	0	0	16
Transferred Out	0	0	0	0	0	0	0
Reassigned From	1	0	0	0	0	0	1
Converted From	2	5	0	9	0	0	16
Cases Closed	260	0	0	71	0	0	331
Total Pending	1,749	25	0	2,568	5	0	4,347

PGH	7	11	12	13	304	ACT	TOTALS
Pending Prior Month	1,561	147	0	1,941	1	0	3,650
Cases Filed	362	2	0	64	0	0	428
Reopened	7	0	0	2	0	0	9
Split Cases	0	0	0	0	0	0	0
Transferred In	0	0	0	0	0	0	0
Reassigned To	1	0	0	0	0	0	1
Converted To	6	1	0	1	0	0	8
Transferred Out	0	0	0	0	0	0	0
Reassigned From	0	0	0	0	0	0	0
Converted From	1	0	0	7	0	0	8
Cases Closed	234	2	0	113	0	0	349
Total Pending	1,702	148	0	1,888	1	0	3,739

RAM	7	11	12	13	304	ACT	TOTALS
Pending Prior Month	1,789	82	0	4,687	3	0	6,561
Cases Filed	429	0	0	76	0	0	505
Reopened	3	0	0	10	0	0	13
Split Cases	0	0	0	0	0	0	0
Transferred In	0	0	0	0	0	0	0
Reassigned To	0	0	0	0	0	0	0
Converted To	16	0	0	1	0	0	17
Transferred Out	0	0	0	0	0	0	0
Reassigned From	0	0	0	0	0	0	0
Converted From	1	2	0	14	0	0	17
Cases Closed	277	1	0	54	0	0	332
Total Pending	1,959	79	0	4,706	3	0	6,747

RBR	7	11	12	13	304	ACT	TOTALS
Pending Prior Month	1,542	63	0	3,692	0	0	5,297
Cases Filed	361	1	0	102	0	0	464
Reopened	12	0	0	4	0	0	16
Split Cases	0	0	0	1	0	0	1
Transferred In	0	0	0	0	0	0	0
Reassigned To	0	0	0	0	0	0	0
Converted To	10	0	0	2	0	0	12
Transferred Out	0	0	0	0	0	0	0
Reassigned From	0	0	0	0	0	0	0
Converted From	2	1	0	9	0	0	12
Cases Closed	254	5	0	204	0	0	463
Total Pending	1,669	58	0	3,588	0	0	5,315

GRAND TOTAL:	9,078	387	1	17,316	11	0	26,793
---------------------	--------------	------------	----------	---------------	-----------	----------	---------------

AJC PENDING CASE SUMMARY

CHAPTER	DADE DIVISION	BROWARD DIVISION	PALM BEACH DIVISION	TOTAL
7	1,998	1	0	1,999
11	75	2	0	77
12	1	0	0	1
13	4,566	0	0	4,566
304	2	0	0	2
Sub-Total	6,642	3	0	6,645
Act Cases	0	0	0	0
GRAND TOTALS	6,642	3	0	6,645

SHF PENDING CASE SUMMARY

CHAPTER	DADE DIVISION	BROWARD DIVISION	PALM BEACH DIVISION	TOTAL
7	0	2	1,747	1,749
11	0	0	25	25
12	0	0	0	0
13	0	0	2,568	2,568
304	0	0	5	5
Sub-Total	0	2	4,345	4,347
Act Cases	0	0	0	0
GRAND TOTALS	0	2	4,345	4,347

PGH PENDING CASE SUMMARY

CHAPTER	DADE DIVISION	BROWARD DIVISION	PALM BEACH DIVISION	TOTAL
7	17	989	696	1,702
11	1	116	31	148
12	0	0	0	0
13	0	1,888	0	1,888
304	0	1	0	1
Sub-Total	18	2,994	727	3,739
Act Cases	0	0	0	0
GRAND TOTALS	18	2,994	727	3,739

RAM PENDING CASE SUMMARY

CHAPTER	DADE DIVISION	BROWARD DIVISION	PALM BEACH DIVISION	TOTAL
7	1,957	0	2	1,959
11	78	0	1	79
12	0	0	0	0
13	4,706	0	0	4,706
304	3	0	0	3
Sub-Total	6,744	0	3	6,747
Act Cases	0	0	0	0
GRAND TOTALS	6,744	0	3	6,747

RBR PENDING CASE SUMMARY

CHAPTER	DADE DIVISION	BROWARD DIVISION	PALM BEACH DIVISION	TOTAL
7	37	1,631	1	1,669
11	0	58	0	58
12	0	0	0	0
13	1,704	1,884	0	3,588
304	0	0	0	0
Sub-Total	1,741	3,573	1	5,315
Act Cases	0	0	0	0
GRAND TOTALS	1,741	3,573	1	5,315

DISTRICT TOTALS	15,145	6,572	5,076	26,793
------------------------	---------------	--------------	--------------	---------------

CASE FILING SUMMARY BY COUNTY

DADE COUNTY - 12025

	7	11	12	13	304	TOTAL
AJC	421	1	0	78	0	500
SHF	0	0	0	0	0	0
PGH	0	0	0	0	0	0
RAM	424	0	0	76	0	500
RBR	0	0	0	38	0	38
Sub-Total	845	1	0	192	0	1038

MONROE COUNTY - 12087

	7	11	12	13	304	TOTAL
AJC	13	0	0	0	0	13
SHF	0	0	0	0	0	0
PGH	0	0	0	0	0	0
RAM	5	0	0	0	0	5
RBR	0	0	0	0	0	0
Sub-Total	18	0	0	0	0	18

Division Total 1056

BROWARD COUNTY - 12011

	7	11	12	13	304	TOTAL
AJC	0	0	0	0	0	0
SHF	0	0	0	0	0	0
PGH	230	1	0	64	0	295
RAM	0	0	0	0	0	0
RBR	361	1	0	65	0	427
Sub-Total	591	2	0	129	0	722

Division Total 722

HIGHLANDS COUNTY - 12055

	7	11	12	13	304	TOTAL
AJC	0	0	0	0	0	0
SHF	21	0	0	5	0	26
PGH	0	0	0	0	0	0
RAM	0	0	0	0	0	0
RBR	0	0	0	0	0	0
Sub-Total	21	0	0	5	0	26

INDIAN RIVER COUNTY - 12061

	7	11	12	13	304	TOTAL
AJC	0	0	0	0	0	0
SHF	25	0	0	6	0	31
PGH	0	0	0	0	0	0
RAM	0	0	0	0	0	0
RBR	0	0	0	0	0	0
Sub-Total	25	0	0	6	0	31

MARTIN COUNTY - 12085

	7	11	12	13	304	TOTAL
AJC	0	0	0	0	0	0
SHF	18	0	0	2	0	20
PGH	10	0	0	0	0	10
RAM	0	0	0	0	0	0
RBR	0	0	0	0	0	0
Sub-Total	28	0	0	2	0	30

OKEECHOBEE COUNTY - 12093

	7	11	12	13	304	TOTAL
AJC	0	0	0	0	0	0
SHF	6	0	0	6	0	12
PGH	0	0	0	0	0	0
RAM	0	0	0	0	0	0
RBR	0	0	0	0	0	0
Sub-Total	6	0	0	6	0	12

PALM BEACH COUNTY - 12099

	7	11	12	13	304	TOTAL
AJC	0	0	0	0	0	0
SHF	212	2	0	53	0	267
PGH	121	1	0	0	0	122
RAM	0	0	0	0	0	0
RBR	0	0	0	0	0	0
Sub-Total	333	3	0	53	0	389

ST. LUCIE - 12111

	7	11	12	13	304	TOTAL
AJC	0	0	0	0	0	0
SHF	69	0	0	18	0	87
PGH	1	0	0	0	0	1
RAM	0	0	0	0	0	0
RBR	0	0	0	0	0	0
Sub-Total	70	0	0	18	0	88

Division Total 576

GRAND TOTAL	1937	6	0	411	0	2354
--------------------	-------------	----------	----------	------------	----------	-------------

MARCH 2005

CASE FILING SUMMARY BY NATURE OF DEBTOR/DIVISION

CHAPTER	BUSINESS				CONSUMER				TOTAL
	DADE	BROWARD	PALM BCH	DIV. TOTAL	DADE	BROWARD	PALM BCH	DIV. TOTAL	
7	22	4	7	33	841	587	476	1904	1937
11	1	1	0	2	0	1	3	4	6
12	0	0	0	0	0	0	0	0	0
13	0	0	1	1	192	129	89	410	411
304	0	0	0	0	0	0	0	0	0
TOTAL	23	5	8	36	1033	717	568	2318	2354

DIVISIONAL BUSINESS CASE FILING SUMMARY

DADE DIVISION

CHAPTER	AJC	SHF	PGH	RAM	RBR	TOTAL
7	11	0	0	11	0	22
11	1	0	0	0	0	1
12	0	0	0	0	0	0
13	0	0	0	0	0	0
304	0	0	0	0	0	0
Sub-Total	12	0	0	11	0	23

BROWARD DIVISION

CHAPTER	AJC	SHF	PGH	RAM	RBR	TOTAL
7	0	0	2	0	2	4
11	0	0	1	0	0	1
12	0	0	0	0	0	0
13	0	0	0	0	0	0
304	0	0	0	0	0	0
Sub-Total	0	0	3	0	2	5

PALM BEACH DIVISION

CHAPTER	AJC	SHF	PGH	RAM	RBR	TOTAL
7	0	4	3	0	0	7
11	0	0	0	0	0	0
12	0	0	0	0	0	0
13	0	1	0	0	0	1
304	0	0	0	0	0	0
Sub-Total	0	5	3	0	0	8
GRAND TOTAL	12	5	6	11	2	36

DIVISIONAL CONSUMER CASE FILING SUMMARY

DADE DIVISION

CHAPTER	AJC	SHF	PGH	RAM	RBR	TOTAL
7	423	0	0	418	0	841
11	0	0	0	0	0	0
12	0	0	0	0	0	0
13	78	0	0	76	38	192
304	0	0	0	0	0	0
Sub-Total	501	0	0	494	38	1033

BROWARD DIVISION

CHAPTER	AJC	SHF	PGH	RAM	RBR	TOTAL
7	0	0	227	0	360	587
11	0	0	0	0	1	1
12	0	0	0	0	0	0
13	0	0	64	0	65	129
304	0	0	0	0	0	0
Sub-Total	0	0	291	0	426	717

PALM BEACH DIVISION

CHAPTER	AJC	SHF	PGH	RAM	RBR	TOTAL
7	0	347	129	0	0	476
11	0	2	1	0	0	3
12	0	0	0	0	0	0
13	0	89	0	0	0	89
304	0	0	0	0	0	0
Sub-Total	0	438	130	0	0	568
GRAND TOTAL	501	438	421	494	464	2318

**CASE FILING SUMMARY BY COUNTY / CONSUMER - BUSINESS
CONSUMERS**

DADE COUNTY - 12025

	7	11	12	13	304	TOTAL
AJC	410	0	0	78	0	488
SHF	0	0	0	0	0	0
PGH	0	0	0	0	0	0
RAM	413	0	0	76	0	489
RBR	0	0	0	38	0	38
Sub-Total	823	0	0	192	0	1015

MONROE COUNTY - 12087

	7	11	12	13	304	TOTAL
AJC	13	0	0	0	0	13
SHF	0	0	0	0	0	0
PGH	0	0	0	0	0	0
RAM	5	0	0	0	0	5
RBR	0	0	0	0	0	0
Sub-Total	18	0	0	0	0	18

0 Division
18 Total 1033

BROWARD COUNTY - 12011

	7	11	12	13	304	TOTAL
AJC	0	0	0	0	0	0
SHF	0	0	0	0	0	0
PGH	228	0	0	64	0	292
RAM	0	0	0	0	0	0
RBR	359	1	0	65	0	425
Sub-Total	587	1	0	129	0	717

0 Division
717 Total 717

HIGHLANDS COUNTY - 12055

	7	11	12	13	304	TOTAL
AJC	0	0	0	0	0	0
SHF	21	0	0	5	0	26
PGH	0	0	0	0	0	0
RAM	0	0	0	0	0	0
RBR	0	0	0	0	0	0
Sub-Total	21	0	0	5	0	26

INDIAN RIVER COUNTY - 12061

	7	11	12	13	304	TOTAL
AJC	0	0	0	0	0	0
SHF	25	0	0	6	0	31
PGH	0	0	0	0	0	0
RAM	0	0	0	0	0	0
RBR	0	0	0	0	0	0
Sub-Total	25	0	0	6	0	31

MARTIN COUNTY - 12085

	7	11	12	13	304	TOTAL
AJC	0	0	0	0	0	0
SHF	18	0	0	2	0	20
PGH	10	0	0	0	0	10
RAM	0	0	0	0	0	0
RBR	0	0	0	0	0	0
Sub-Total	28	0	0	2	0	30

OKEECHOBEE COUNTY - 12093

	7	11	12	13	304	TOTAL
AJC	0	0	0	0	0	0
SHF	6	0	0	6	0	12
PGH	0	0	0	0	0	0
RAM	0	0	0	0	0	0
RBR	0	0	0	0	0	0
Sub-Total	6	0	0	6	0	12

PALM BEACH COUNTY - 12099

	7	11	12	13	304	TOTAL
AJC	0	0	0	0	0	0
SHF	208	2	0	53	0	263
PGH	118	1	0	0	0	119
RAM	0	0	0	0	0	0
RBR	0	0	0	0	0	0
Sub-Total	326	3	0	53	0	382

ST. LUCIE - 12111

	7	11	12	13	304	TOTAL
AJC	0	0	0	0	0	0
SHF	69	0	0	17	0	86
PGH	1	0	0	0	0	1
RAM	0	0	0	0	0	0
RBR	0	0	0	0	0	0
Sub-Total	70	0	0	17	0	87

0 Division
87 Total 568

GRAND TOTAL	1904	4	0	410	0	2318
--------------------	-------------	----------	----------	------------	----------	-------------

CASE FILING SUMMARY BY COUNTY / CONSUMER - BUSINESS
BUSINESS

DADE COUNTY - 12025

	7	11	12	13	304	TOTAL
AJC	11	1	0	0	0	12
SHF	0	0	0	0	0	0
PGH	0	0	0	0	0	0
RAM	11	0	0	0	0	11
RBR	0	0	0	0	0	0
Sub-Total	22	1	0	0	0	23

MONROE COUNTY - 12087

	7	11	12	13	304	TOTAL
AJC	0	0	0	0	0	0
SHF	0	0	0	0	0	0
PGH	0	0	0	0	0	0
RAM	0	0	0	0	0	0
RBR	0	0	0	0	0	0
Sub-Total	0	0	0	0	0	0

0 Division
0 Total **23**

BROWARD COUNTY - 12011

	7	11	12	13	304	TOTAL
AJC	0	0	0	0	0	0
SHF	0	0	0	0	0	0
PGH	2	1	0	0	0	3
RAM	0	0	0	0	0	0
RBR	2	0	0	0	0	2
Sub-Total	4	1	0	0	0	5

2 Division
5 Total **5**

HIGHLANDS COUNTY - 12055

	7	11	12	13	304	TOTAL
AJC	0	0	0	0	0	0
SHF	0	0	0	0	0	0
PGH	0	0	0	0	0	0
RAM	0	0	0	0	0	0
RBR	0	0	0	0	0	0
Sub-Total	0	0	0	0	0	0

INDIAN RIVER COUNTY - 12061

	7	11	12	13	304	TOTAL
AJC	0	0	0	0	0	0
SHF	0	0	0	0	0	0
PGH	0	0	0	0	0	0
RAM	0	0	0	0	0	0
RBR	0	0	0	0	0	0
Sub-Total	0	0	0	0	0	0

MARTIN COUNTY - 12085

	7	11	12	13	304	TOTAL
AJC	0	0	0	0	0	0
SHF	0	0	0	0	0	0
PGH	0	0	0	0	0	0
RAM	0	0	0	0	0	0
RBR	0	0	0	0	0	0
Sub-Total	0	0	0	0	0	0

OKEECHOBEE COUNTY - 12093

	7	11	12	13	304	TOTAL
AJC	0	0	0	0	0	0
SHF	0	0	0	0	0	0
PGH	0	0	0	0	0	0
RAM	0	0	0	0	0	0
RBR	0	0	0	0	0	0
Sub-Total	0	0	0	0	0	0

PALM BEACH COUNTY - 12099

	7	11	12	13	304	TOTAL
AJC	0	0	0	0	0	0
SHF	4	0	0	0	0	4
PGH	3	0	0	0	0	3
RAM	0	0	0	0	0	0
RBR	0	0	0	0	0	0
Sub-Total	7	0	0	0	0	7

ST. LUCIE - 12111

	7	11	12	13	304	TOTAL
AJC	0	0	0	0	0	0
SHF	0	0	0	1	0	1
PGH	0	0	0	0	0	0
RAM	0	0	0	0	0	0
RBR	0	0	0	0	0	0
Sub-Total	0	0	0	1	0	1

0 Division
1 Total **8**

GRAND TOTAL	33	2	0	1	0	36
--------------------	-----------	----------	----------	----------	----------	-----------

AJC	CH 7	CH 11	CH 12	CH 13	SEC 304	TOTAL
JAN	281	2	0	71	0	354
FEB	250	3	0	73	0	326
MAR	434	1	0	78	0	513
APR	0	0	0	0	0	0
MAY	0	0	0	0	0	0
JUN	0	0	0	0	0	0
JUL	0	0	0	0	0	0
AUG	0	0	0	0	0	0
SEP	0	0	0	0	0	0
OCT	0	0	0	0	0	0
NOV	0	0	0	0	0	0
DEC	0	0	0	0	0	0
TOTALS	965	6	0	222	0	1193

SHF	CH 7	CH 11	CH 12	CH 13	SEC 304	TOTAL
JAN	227	4	0	86	0	317
FEB	235	1	0	77	0	313
MAR	351	2	0	90	0	443
APR	0	0	0	0	0	0
MAY	0	0	0	0	0	0
JUN	0	0	0	0	0	0
JUL	0	0	0	0	0	0
AUG	0	0	0	0	0	0
SEP	0	0	0	0	0	0
OCT	0	0	0	0	0	0
NOV	0	0	0	0	0	0
DEC	0	0	0	0	0	0
TOTALS	813	7	0	253	0	1073

PGH	CH 7	CH 11	CH 12	CH 13	SEC 304	TOTAL
JAN	222	1	0	60	0	283
FEB	239	4	0	57	0	300
MAR	362	2	0	64	0	428
APR	0	0	0	0	0	0
MAY	0	0	0	0	0	0
JUN	0	0	0	0	0	0
JUL	0	0	0	0	0	0
AUG	0	0	0	0	0	0
SEP	0	0	0	0	0	0
OCT	0	0	0	0	0	0
NOV	0	0	0	0	0	0
DEC	0	0	0	0	0	0
TOTALS	823	7	0	181	0	1011

RAM	CH 7	CH 11	CH 12	CH 13	SEC 304	TOTAL
JAN	274	1	0	72	0	347
FEB	255	2	0	72	0	329
MAR	429	0	0	76	0	505
APR	0	0	0	0	0	0
MAY	0	0	0	0	0	0
JUN	0	0	0	0	0	0
JUL	0	0	0	0	0	0
AUG	0	0	0	0	0	0
SEP	0	0	0	0	0	0
OCT	0	0	0	0	0	0
NOV	0	0	0	0	0	0
DEC	0	0	0	0	0	0
TOTALS	958	3	0	220	0	1181

RBR	CH 7	CH 11	CH 12	CH 13	SEC 304	TOTAL
JAN	226	1	0	104	0	331
FEB	247	2	0	101	0	350
MAR	361	1	0	103	0	465
APR	0	0	0	0	0	0
MAY	0	0	0	0	0	0
JUN	0	0	0	0	0	0
JUL	0	0	0	0	0	0
AUG	0	0	0	0	0	0
SEP	0	0	0	0	0	0
OCT	0	0	0	0	0	0
NOV	0	0	0	0	0	0
DEC	0	0	0	0	0	0
TOTALS	834	4	0	308	0	1146

**2005 YEAR-TO-DATE COMPARISON OF BANKRUPTCY CASE FILINGS
BY JUDGE**

	AJC	SHF	PGH	RAM	RBR	TOTAL
JAN	354	317	283	347	331	1632
FEB	326	313	300	329	350	1618
MAR	513	443	428	505	465	2354
APR	0	0	0	0	0	0
MAY	0	0	0	0	0	0
JUN	0	0	0	0	0	0
JUL	0	0	0	0	0	0
AUG	0	0	0	0	0	0
SEP	0	0	0	0	0	0
OCT	0	0	0	0	0	0
NOV	0	0	0	0	0	0
DEC	0	0	0	0	0	0
TOTALS	1193	1073	1011	1181	1146	5604
% of Total	21.29	19.15	18.04	21.07	20.45	

**2005 YEAR-TO-DATE COMPARISON OF BANKRUPTCY CASE FILINGS
BY JUDGE/CHAPTER**

	CH 7	CH 11	CH 12	CH 13	SEC 304	TOTAL
AJC	965	6	0	222	0	1193
SHF	813	7	0	253	0	1073
PGH	823	7	0	181	0	1011
RAM	958	3	0	220	0	1181
RBR	834	4	0	308	0	1146
TOTALS	4393	27	0	1184	0	5604

CALENDAR YEAR-TO-DATE COMPARISON

	ENDING MAR 05	ENDING MAR 04	PERCENT CHANGE
Bankruptcy Case Filings	5604	6598	-15.07
Bankruptcy Case Closings	7662	8042	-4.73
Adversary Filings	231	346	-33.24
Adversary Closings	369	666	-44.59

12-MONTH/THREE YEAR COMPARISON

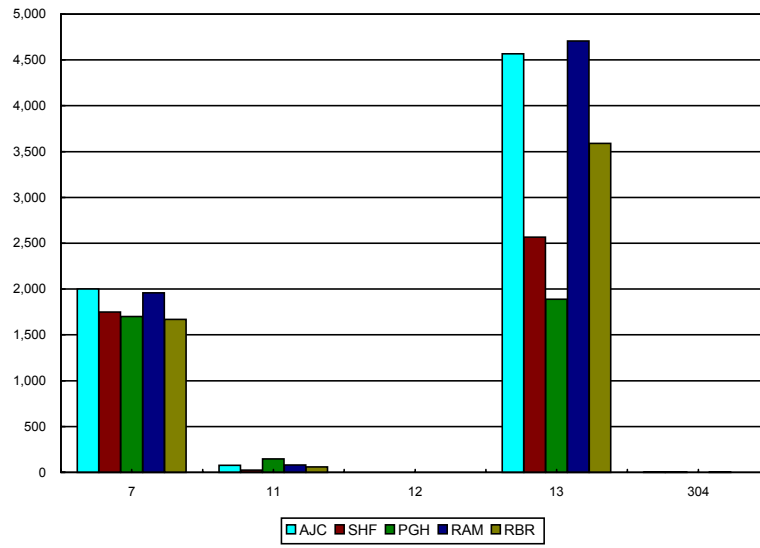
	ENDING MAR 05	ENDING MAR 04	ENDING MAR 03	% CHANGE 2005 / 2004	% CHANGE 2005 / 2 003
Bankruptcy Case Filings	25486	31055	32106	-17.93	-20.62
Bankruptcy Case Closings	29582	31055	31665	-4.74	-6.58
Adversary Filings	1238	2566	1672	-51.75	-25.96
Adversary Closings	1579	2636	1377	-40.10	14.67

MONTHLY COMPARISON

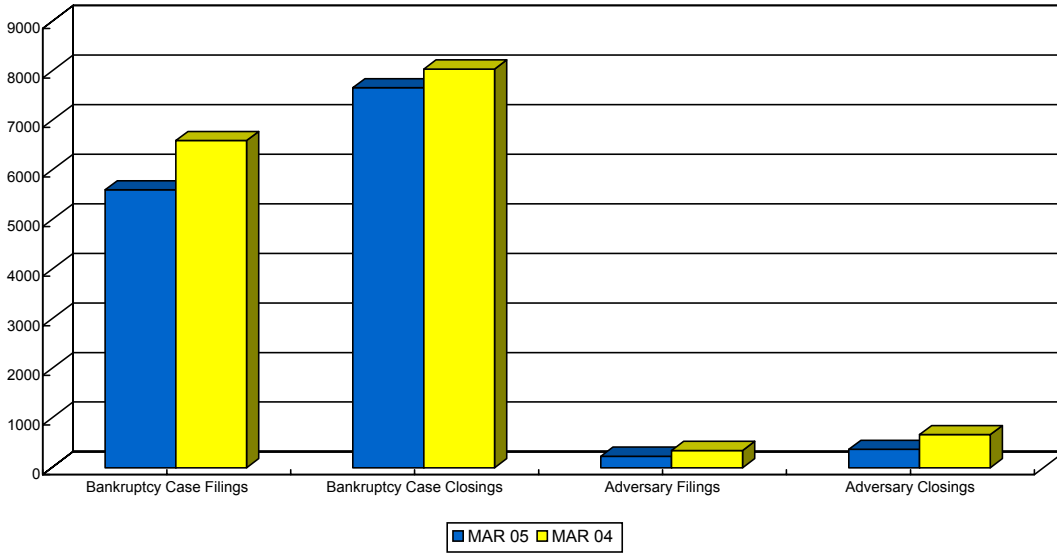
	MAR 05	MAR 04	PERCENT CHANGE
Bankruptcy Case Filings	2354	2714	-13.26
Bankruptcy Case Closings	1875	2291	-18.16
Adversary Filings	78	150	-48.00
Adversary Closings	129	174	-25.86

*Filings and Closings for Dade Division includes Monroe County
 Filings and Closings for Palm Beach Division includes Indian River, Highlands, Martin,
 St. Lucie & Okeechobee Counties*

TOTAL PENDING CASELOAD BY JUDGE/CHAPTER



CALENDAR YEAR-TO-DATE COMPARISON



12-MONTH/THREE YEAR COMPARISON

