

UNITED STATES BANKRUPTCY COURT

SOUTHERN DISTRICT OF FLORIDA

*51 S.W. 1st Avenue
Room 1401
Miami, FL 33130*

*Karen Eddy
Clerk of Court*



MONTHLY STATISTICAL REPORT

MARCH 2004

MONTHLY STATISTICAL REPORT

TABLE OF CONTENTS

	<u><i>page</i></u>
<i>I. MONTHLY SARD SUMMARY REPORT</i>	<i>2</i>
<i>II. BK CASE FILINGS SUMMARY REPORT</i>	<i>3</i>
<i>III. BK CASE CLOSINGS SUMMARY REPORT</i>	<i>4</i>
<i>IV. AP CASE FILINGS SUMMARY REPORT</i>	<i>5</i>
<i>V. AP CASE CLOSINGS SUMMARY REPORT</i>	<i>6</i>
<i>VI. BK PRO SE CASES FILING SUMMARY REPORT</i>	<i>7</i>
<i>VII. PENDING CASELOAD REPORT BY JUDGE/CHAPTER</i>	<i>8</i>
<i>VIII. DIVISIONAL CASELOAD REPORT</i>	<i>9</i>
<i>IX. CASE FILING BREAKDOWN BY COUNTY</i>	<i>10</i>
<i>X. BREAKDOWN BY NATURE OF DEBTOR</i>	<i>11</i>
<i>XI. BREAKDOWN BY COUNTY / NATURE - CONSUMER</i>	<i>12</i>
<i>XII. BREAKDOWN BY COUNTY / NATURE - BUSINESS</i>	<i>13</i>
<i>XIII. SUMMARIES AND GRAPHS</i>	<i>14 - 18</i>

MARCH 2004
MONTHLY SARD REPORT SUMMARY

I. BC101 REPORT OF BANKRUPTCY CASES

	AJC	SHF	PGH	RAM	RBR	TOTAL
Pending Prior Month	7,587	4,529	5,134	7,652	4,917	29,819
Cases Filed	597	484	511	598	517	2,707
Reopened	17	5	11	15	12	60
Split Cases	1	2	0	0	1	4
Trans. In	0	0	1	1	1	3
Reassigned To	0	4	2	1	1	8
Trans. Out	0	0	0	0	0	0
Reassigned From	0	2	5	0	1	8
Cases Closed	475	405	433	517	461	2,291
Cases Pending	7,727	4,617	5,221	7,750	4,987	30,302

II. BC109 REPORT OF ADVERSARY CASES

	AJC	SHF	PGH	RAM	RBR	TOTAL
Pending Prior Month	101	167	316	155	309	1,048
Cases Filed	79	22	28	9	12	150
Reassigned To	0	0	1	0	0	1
Cases Reopened	0	0	1	0	0	1
Cases Closed	13	19	72	16	54	174
Reassigned From	0	1	0	0	0	1
Cases Pending	167	169	274	148	267	1,025

IV. MONTHLY REPORT OF TRIALS AND OTHER ACTIVITY

	Contested Proceedings	Miscellaneous Proceedings	Total Hours in Court
AJC	7	35	42
SHF	0	43	43
PGH	3	34	37
RAM	25	37	62
RBR	3	22	25
Total	38	171	209

UNITED STATES BANKRUPTCY COURT
Southern District of Florida

CASE FILINGS SUMMARY REPORT
For Cases Filed from 03/01/2004 to 03/31/2004
Run Date: 04/02/04

Run Time 11:22

Divisional Breakdown

	Dade					Broward					Palm Beach					
	Ch	7	11	12	13	304	7	11	12	13	304	7	11	12	13	304
Ch	7		11	12	13	304	7	11	12	13	304	7	11	12	13	304
AJC	482		6	0	109	0	0	0	0	0	0	0	0	0	0	0
SHF	0		0	0	0	0	0	0	0	0	0	375	3	0	106	0
PGH	0		0	0	37	0	250	0	0	94	0	125	5	0	0	0
RAM	482		3	0	113	0	0	0	0	0	0	0	0	0	0	0
RBR	0		0	0	35	0	387	2	0	93	0	0	0	0	0	0

Tot	964		9	0	294	0	637	2	0	187	0	500	8	0	106	0
Divisional Totals					1267					826					614	

Totals By Judge

	Chapter 7	Section 304	Chapter 11	Chapter 12	Chapter 13	Totals
AJC	482	0	6	0	109	597
SHF	375	0	3	0	106	484
PGH	375	0	5	0	131	511
RAM	482	0	3	0	113	598
RBR	387	0	2	0	128	517

Totals	2101	0	19	0	587	

Grand Total: 2707

= 2714

"TOTAL DOES NOT INCLUDE (SPLIT, TRANSFERRED IN) CASES AND (INTRA-DISTRICT) CASES FILED PRIOR TO THIS MONTH"

(4) (1) (2)

UNITED STATES BANKRUPTCY COURT
Southern District of Florida

CASE CLOSING SUMMARY REPORT
For Cases Closed from 03/01/2004 to 03/31/2004
Run Date: 04/07/04

Run Time 11:46

Divisional Breakdown

		Dade					Broward					Palm Beach				
Ch		7	11	12	13	304	7	11	12	13	304	7	11	12	13	304
AJC	346		2	0	127	0	0	0	0	0	0	0	0	0	0	0
SHF	0	0	0	0	0	0	0	0	0	0	0	374	3	0	27	1
PGH	4	0	0	0	39	0	242	1	0	16	0	128	3	0	0	0
RAM	344	6	0	0	165	2	0	0	0	0	0	0	0	0	0	0
RBR	9	0	0	0	58	0	344	1	0	49	0	0	0	0	0	0

Tot	703	8	0	0	389	2	586	2	0	65	0	502	6	0	27	1
Divisional Totals		1102					653					536				

Totals By Judge

	Chapter 7	Section 304	Chapter 11	Chapter 12	Chapter 13	Totals
AJC	346	0	2	0	127	475
SHF	374	1	3	0	27	405
PGH	374	0	4	0	55	433
RAM	344	2	6	0	165	517
RBR	353	0	1	0	107	461

Totals	1791	3	16	0	481	
Grand Total:	2291					

UNITED STATES BANKRUPTCY COURT
Southern District of FloridaAdversary Proceedings Case Filing Report
For Cases Filed from 03/01/2004 to 03/31/2004
Run Time 15:51

Run Date: 04/08/04

Divisional Breakdown

	Dade	Broward	Palm Beach	Totals
AJC	79	0	0	79
SHF	0	0	22	22
PGH	0	19	9	28
RAM	9	0	0	9
RBR	1	11	0	12

Totals	89	30	31	150

UNITED STATES BANKRUPTCY COURT
Southern District of FloridaAdversary Proceedings Case Closing Report
For Cases Closed from 03/01/2004 to 03/31/2004
Run Time 15:52

Run Date: 04/08/04

Divisional Breakdown

	Dade	Broward	Palm Beach	Totals
AJC	13	0	0	13
SHF	0	0	19	19
PGH	0	67	5	72
RAM	16	0	0	16
RBR	0	54	0	54

Totals	29	121	24	174

UNITED STATES BANKRUPTCY COURT
SOUTHERN DISTRICT OF FLORIDA

BANKRUPTCY PRO SE CASES FILING SUMMARY REPORT
For Cases Filed from 03/01/2004 to 03/31/2004

Run Date: 04/06/04

Run Time 10:57

Divisional Breakdown

Ch	Dade					Broward					Palm Beach					
	7	11	12	13	304	7	11	12	13	304	7	11	12	13	304	
AJC	13	0	0	8	0	0	0	0	0	0	0	0	0	0	0	
SHF	0	0	0	0	0	0	0	0	0	0	51	0	0	15	0	
PGH	0	0	0	14	0	38	0	0	5	0	28	0	0	0	0	
RAM	26	0	0	6	0	0	0	0	0	0	0	0	0	0	0	
RBR	0	0	0	9	0	62	0	0	12	0	0	0	0	0	0	

Tot	39	0	0	37	0	100	0	0	17	0	109	0	0	15	0	
Divisional Totals				76	117				124							

Totals By Judge

	Chapter 7	Section 304	Chapter 11	Chapter 12	Chapter 13	Totals
AJC	13	0	0	0	8	21
SHF	81	0	0	0	15	96
PGH	66	0	0	0	19	85
RAM	26	0	0	0	6	32
RBR	62	0	0	0	21	83

Totals	248	0	0	0	69	317
Grand Total:	317					

**PENDING CASELOAD REPORTS BY JUDGE/CHAPTER
MARCH 2004**

AJC	7	11	12	13	304	ACT	TOTALS
Pending Prior Month	1,924	97	1	5,563	2	0	7,587
Cases Filed	482	6	0	109	0	0	597
Reopened	15	0	0	2	0	0	17
Split Cases	1	0	0	0	0	0	1
Transferred In	0	0	0	0	0	0	0
Reassigned To	0	0	0	0	0	0	0
Converted To	14	0	0	4	0	0	18
Transferred Out	0	0	0	0	0	0	0
Reassigned From	0	0	0	0	0	0	0
Converted From	4	1	0	13	0	0	18
Cases Closed	346	2	0	127	0	0	475
Total Pending	2,086	100	1	5,538	2	0	7,727
SHF	7	11	12	13	304	ACT	TOTALS
Pending Prior Month	1,683	32	0	2,807	7	0	4,529
Cases Filed	375	3	0	106	0	0	484
Reopened	5	0	0	0	0	0	5
Split Cases	1	0	0	1	0	0	2
Transferred In	0	0	0	0	0	0	0
Reassigned To	1	0	0	3	0	0	4
Converted To	15	0	0	6	0	0	21
Transferred Out	0	0	0	0	0	0	0
Reassigned From	2	0	0	0	0	0	2
Converted From	6	2	0	13	0	0	21
Cases Closed	374	3	0	27	1	0	405
Total Pending	1,698	30	0	2,883	6	0	4,617
PGH	7	11	12	13	304	ACT	TOTALS
Pending Prior Month	1,717	156	0	3,260	1	0	5,134
Cases Filed	375	5	0	131	0	0	511
Reopened	10	0	0	1	0	0	11
Split Cases	0	0	0	0	0	0	0
Transferred In	1	0	0	0	0	0	1
Reassigned To	2	0	0	0	0	0	2
Converted To	9	0	0	5	0	0	14
Transferred Out	0	0	0	0	0	0	0
Reassigned From	2	0	0	3	0	0	5
Converted From	5	0	0	9	0	0	14
Cases Closed	374	4	0	55	0	0	433
Total Pending	1,733	157	0	3,330	1	0	5,221
RAM	7	11	12	13	304	ACT	TOTALS
Pending Prior Month	1,896	150	0	5,602	4	0	7,652
Cases Filed	482	3	0	113	0	0	598
Reopened	10	0	0	5	0	0	15
Split Cases	0	0	0	0	0	0	0
Transferred In	1	0	0	0	0	0	1
Reassigned To	1	0	0	0	0	0	1
Converted To	15	0	0	2	0	0	17
Transferred Out	0	0	0	0	0	0	0
Reassigned From	0	0	0	0	0	0	0
Converted From	2	1	0	14	0	0	17
Cases Closed	344	6	0	165	2	0	517
Total Pending	2,059	146	0	5,543	2	0	7,750
RBR	7	11	12	13	304	ACT	TOTALS
Pending Prior Month	1,603	83	0	3,231	0	0	4,917
Cases Filed	387	2	0	128	0	0	517
Reopened	8	0	0	4	0	0	12
Split Cases	0	0	0	1	0	0	1
Transferred In	1	0	0	0	0	0	1
Reassigned To	1	0	0	0	0	0	1
Converted To	5	0	0	9	0	0	14
Transferred Out	0	0	0	0	0	0	0
Reassigned From	1	0	0	0	0	0	1
Converted From	9	0	0	5	0	0	14
Cases Closed	353	1	0	107	0	0	461
Total Pending	1,642	84	0	3,261	0	0	4,987
GRAND TOTAL:	9,218	517	1	20,555	11	0	30,302

AJC PENDING CASE SUMMARY

CHAPTER	DADE DIVISION	BROWARD DIVISION	PALM BEACH DIVISION	TOTAL
7	2,083	1	2	2,086
11	97	3	0	100
12	1	0	0	1
13	5,538	0	0	5,538
304	2	0	0	2
Sub-Total	7,721	4	2	7,727
Act Cases	0	0	0	0
GRAND TOTALS	7,721	4	2	7,727

SHF PENDING CASE SUMMARY

CHAPTER	DADE DIVISION	BROWARD DIVISION	PALM BEACH DIVISION	TOTAL
7	3	2	1,693	1,698
11	0	0	30	30
12	0	0	0	0
13	0	0	2,883	2,883
304	0	0	6	6
Sub-Total	3	2	4,612	4,617
Act Cases	0	0	0	0
GRAND TOTALS	3	2	4,612	4,617

PGH PENDING CASE SUMMARY

CHAPTER	DADE DIVISION	BROWARD DIVISION	PALM BEACH DIVISION	TOTAL
7	29	1,091	613	1,733
11	1	107	49	157
12	0	0	0	0
13	1,017	2,313	0	3,330
304	0	1	0	1
Sub-Total	1,047	3,512	662	5,221
Act Cases	0	0	0	0
GRAND TOTALS	1,047	3,512	662	5,221

RAM PENDING CASE SUMMARY

CHAPTER	DADE DIVISION	BROWARD DIVISION	PALM BEACH DIVISION	TOTAL
7	2,045	0	14	2,059
11	145	0	1	146
12	0	0	0	0
13	5,543	0	0	5,543
304	2	0	0	2
Sub-Total	7,735	0	15	7,750
Act Cases	0	0	0	0
GRAND TOTALS	7,735	0	15	7,750

RBR PENDING CASE SUMMARY

CHAPTER	DADE DIVISION	BROWARD DIVISION	PALM BEACH DIVISION	TOTAL
7	19	1,623	0	1,642
11	0	84	0	84
12	0	0	0	0
13	993	2,268	0	3,261
304	0	0	0	0
Sub-Total	1,012	3,975	0	4,987
Act Cases	0	0	0	0
GRAND TOTALS	1,012	3,975	0	4,987

DISTRICT TOTALS	17,518	7,493	5,291	30,302
------------------------	---------------	--------------	--------------	---------------

**MARCH 2004
CASE FILING SUMMARY BY COUNTY**

DADE COUNTY - 12025						
	7	11	12	13	304	TOTAL
AJC	475	6	0	108	0	589
SHF	0	0	0	0	0	0
PGH	0	0	0	37	0	37
RAM	475	3	0	112	0	590
RBR	0	0	0	36	0	36
Sub-Total	950	9	0	293	0	1252

MONROE COUNTY - 12087						
	7	11	12	13	304	TOTAL
AJC	8	0	0	1	0	9
SHF	0	0	0	0	0	0
PGH	0	0	0	0	0	0
RAM	8	0	0	1	0	9
RBR	0	0	0	0	0	0
Sub-Total	16	0	0	2	0	18
						Division Total 1270

BROWARD COUNTY - 12011						
	7	11	12	13	304	TOTAL
AJC	0	0	0	0	0	0
SHF	0	0	0	0	0	0
PGH	251	0	0	94	0	345
RAM	0	0	0	0	0	0
RBR	388	2	0	93	0	483
Sub-Total	639	2	0	187	0	828
						Division Total 828

HIGHLANDS COUNTY - 12055						
	7	11	12	13	304	TOTAL
AJC	0	0	0	0	0	0
SHF	31	1	0	5	0	37
PGH	0	0	0	0	0	0
RAM	0	0	0	0	0	0
RBR	0	0	0	0	0	0
Sub-Total	31	1	0	5	0	37

INDIAN RIVER COUNTY - 12061						
	7	11	12	13	304	TOTAL
AJC	0	0	0	0	0	0
SHF	31	0	0	6	0	37
PGH	1	0	0	0	0	1
RAM	0	0	0	0	0	0
RBR	0	0	0	0	0	0
Sub-Total	32	0	0	6	0	38

MARTIN COUNTY - 12085						
	7	11	12	13	304	TOTAL
AJC	0	0	0	0	0	0
SHF	19	0	0	8	0	27
PGH	15	0	0	0	0	15
RAM	0	0	0	0	0	0
RBR	0	0	0	0	0	0
Sub-Total	34	0	0	8	0	42

OKEECHOBEE COUNTY - 12093						
	7	11	12	13	304	TOTAL
AJC	0	0	0	0	0	0
SHF	11	0	0	4	0	15
PGH	0	0	0	0	0	0
RAM	0	0	0	0	0	0
RBR	0	0	0	0	0	0
Sub-Total	11	0	0	4	0	15

PALM BEACH COUNTY - 12099						
	7	11	12	13	304	TOTAL
AJC	0	0	0	0	0	0
SHF	203	2	0	59	0	264
PGH	109	5	0	0	0	114
RAM	0	0	0	0	0	0
RBR	0	0	0	0	0	0
Sub-Total	312	7	0	59	0	378

ST. LUCIE - 12111						
	7	11	12	13	304	TOTAL
AJC	0	0	0	0	0	0
SHF	81	0	0	25	0	106
PGH	0	0	0	0	0	0
RAM	0	0	0	0	0	0
RBR	0	0	0	0	0	0
Sub-Total	81	0	0	25	0	106
						Division Total 616

GRAND TOTAL						
	7	11	12	13	304	TOTAL
	2106	19	0	589	0	2714

MARCH 2004
CASE FILING SUMMARY BY NATURE OF DEBTOR/DIVISION

CHAPTER	BUSINESS				CONSUMER				TOTAL
	DADE	BROWARD	PALM BCH	DIV. TOTAL	DADE	BROWARD	PALM BCH	DIV. TOTAL	
7	13	11	9	33	953	628	492	2073	2106
11	9	1	7	17	0	1	1	2	19
12	0	0	0	0	0	0	0	0	0
13	0	0	1	1	295	187	106	588	589
304	0	0	0	0	0	0	0	0	0
TOTAL	22	12	17	51	1248	816	599	2663	2714

DIVISIONAL BUSINESS CASE FILING SUMMARY

DADE DIVISION

CHAPTER	AJC	SHF	PGH	RAM	RBR	TOTAL
7	6	0	0	7	0	13
11	6	0	0	3	0	9
12	0	0	0	0	0	0
13	0	0	0	0	0	0
304	0	0	0	0	0	0
Sub-Total	12	0	0	10	0	22

BROWARD DIVISION

CHAPTER	AJC	SHF	PGH	RAM	RBR	TOTAL
7	0	0	7	0	4	11
11	0	0	0	0	1	1
12	0	0	0	0	0	0
13	0	0	0	0	0	0
304	0	0	0	0	0	0
Sub-Total	0	0	7	0	5	12

PALM BEACH DIVISION

CHAPTER	AJC	SHF	PGH	RAM	RBR	TOTAL
7	0	6	3	0	0	9
11	0	3	4	0	0	7
12	0	0	0	0	0	0
13	0	1	0	0	0	1
304	0	0	0	0	0	0
Sub-Total	0	10	7	0	0	17
GRAND TOTAL	12	10	14	10	5	51

DIVISIONAL CONSUMER CASE FILING SUMMARY

DADE DIVISION

CHAPTER	AJC	SHF	PGH	RAM	RBR	TOTAL
7	477	0	0	476	0	953
11	0	0	0	0	0	0
12	0	0	0	0	0	0
13	109	0	37	113	36	295
304	0	0	0	0	0	0
Sub-Total	586	0	37	589	36	1248

BROWARD DIVISION

CHAPTER	AJC	SHF	PGH	RAM	RBR	TOTAL
7	0	0	244	0	384	628
11	0	0	0	0	1	1
12	0	0	0	0	0	0
13	0	0	94	0	93	187
304	0	0	0	0	0	0
Sub-Total	0	0	338	0	478	816

PALM BEACH DIVISION

CHAPTER	AJC	SHF	PGH	RAM	RBR	TOTAL
7	0	370	122	0	0	492
11	0	0	1	0	0	1
12	0	0	0	0	0	0
13	0	106	0	0	0	106
304	0	0	0	0	0	0
Sub-Total	0	476	123	0	0	599
GRAND TOTAL	586	476	498	589	514	2663

CASE FILING SUMMARY BY COUNTY / CONSUMER - BUSINESS CONSUMERS

DADE COUNTY - 12025						
	7	11	12	13	304	TOTAL
AJC	469	0	0	108	0	577
SHF	0	0	0	0	0	0
PGH	0	0	0	37	0	37
RAM	468	0	0	112	0	580
RBR	0	0	0	36	0	36
Sub-Total	937	0	0	293	0	1230

MONROE COUNTY - 12087							
	7	11	12	13	304	TOTAL	
AJC	8	0	0	1	0	9	
SHF	0	0	0	0	0	0	
PGH	0	0	0	0	0	0	
RAM	8	0	0	1	0	9	
RBR	0	0	0	0	0	0	
Sub-Total	16	0	0	2	0	18	
						Division Total	1248

BROWARD COUNTY - 12011							
	7	11	12	13	304	TOTAL	
AJC	0	0	0	0	0	0	
SHF	0	0	0	0	0	0	
PGH	244	0	0	94	0	338	
RAM	0	0	0	0	0	0	
RBR	384	1	0	93	0	478	
Sub-Total	628	1	0	187	0	816	
						Division Total	816

HIGHLANDS COUNTY - 12055						
	7	11	12	13	304	TOTAL
AJC	0	0	0	0	0	0
SHF	31	0	0	5	0	36
PGH	0	0	0	0	0	0
RAM	0	0	0	0	0	0
RBR	0	0	0	0	0	0
Sub-Total	31	0	0	5	0	36

INDIAN RIVER COUNTY - 12061						
	7	11	12	13	304	TOTAL
AJC	0	0	0	0	0	0
SHF	30	0	0	6	0	36
PGH	1	0	0	0	0	1
RAM	0	0	0	0	0	0
RBR	0	0	0	0	0	0
Sub-Total	31	0	0	6	0	37

MARTIN COUNTY - 12085						
	7	11	12	13	304	TOTAL
AJC	0	0	0	0	0	0
SHF	19	0	0	8	0	27
PGH	15	0	0	0	0	15
RAM	0	0	0	0	0	0
RBR	0	0	0	0	0	0
Sub-Total	34	0	0	8	0	42

OKEECHOBEE COUNTY - 12093						
	7	11	12	13	304	TOTAL
AJC	0	0	0	0	0	0
SHF	11	0	0	4	0	15
PGH	0	0	0	0	0	0
RAM	0	0	0	0	0	0
RBR	0	0	0	0	0	0
Sub-Total	11	0	0	4	0	15

PALM BEACH COUNTY - 12099						
	7	11	12	13	304	TOTAL
AJC	0	0	0	0	0	0
SHF	200	0	0	58	0	258
PGH	106	1	0	0	0	107
RAM	0	0	0	0	0	0
RBR	0	0	0	0	0	0
Sub-Total	306	1	0	58	0	365

ST. LUCIE - 12111							
	7	11	12	13	304	TOTAL	
AJC	0	0	0	0	0	0	
SHF	79	0	0	25	0	104	
PGH	0	0	0	0	0	0	
RAM	0	0	0	0	0	0	
RBR	0	0	0	0	0	0	
Sub-Total	79	0	0	25	0	104	
						Division Total	599

GRAND TOTAL						
	7	11	12	13	304	TOTAL
	2073	2	0	588	0	2663

CASE FILING SUMMARY BY COUNTY / CONSUMER - BUSINESS BUSINESS

DADE COUNTY - 12025						
	7	11	12	13	304	TOTAL
AJC	6	6	0	0	0	12
SHF	0	0	0	0	0	0
PGH	0	0	0	0	0	0
RAM	7	3	0	0	0	10
RBR	0	0	0	0	0	0
Sub-Total	13	9	0	0	0	22

MONROE COUNTY - 12087						
	7	11	12	13	304	TOTAL
AJC	0	0	0	0	0	0
SHF	0	0	0	0	0	0
PGH	0	0	0	0	0	0
RAM	0	0	0	0	0	0
RBR	0	0	0	0	0	0
Sub-Total	0	0	0	0	0	0

BROWARD COUNTY - 12011						
	7	11	12	13	304	TOTAL
AJC	0	0	0	0	0	0
SHF	0	0	0	0	0	0
PGH	7	0	0	0	0	7
RAM	0	0	0	0	0	0
RBR	4	1	0	0	0	5
Sub-Total	11	1	0	0	0	12

HIGHLANDS COUNTY - 12055						
	7	11	12	13	304	TOTAL
AJC	0	0	0	0	0	0
SHF	0	1	0	0	0	1
PGH	0	0	0	0	0	0
RAM	0	0	0	0	0	0
RBR	0	0	0	0	0	0
Sub-Total	0	1	0	0	0	1

INDIAN RIVER COUNTY - 12061						
	7	11	12	13	304	TOTAL
AJC	0	0	0	0	0	0
SHF	1	0	0	0	0	1
PGH	0	0	0	0	0	0
RAM	0	0	0	0	0	0
RBR	0	0	0	0	0	0
Sub-Total	1	0	0	0	0	1

MARTIN COUNTY - 12085						
	7	11	12	13	304	TOTAL
AJC	0	0	0	0	0	0
SHF	0	0	0	0	0	0
PGH	0	0	0	0	0	0
RAM	0	0	0	0	0	0
RBR	0	0	0	0	0	0
Sub-Total	0	0	0	0	0	0

OKEECHOBEE COUNTY - 12093						
	7	11	12	13	304	TOTAL
AJC	0	0	0	0	0	0
SHF	0	0	0	0	0	0
PGH	0	0	0	0	0	0
RAM	0	0	0	0	0	0
RBR	0	0	0	0	0	0
Sub-Total	0	0	0	0	0	0

PALM BEACH COUNTY - 12099						
	7	11	12	13	304	TOTAL
AJC	0	0	0	0	0	0
SHF	3	2	0	1	0	6
PGH	3	4	0	0	0	7
RAM	0	0	0	0	0	0
RBR	0	0	0	0	0	0
Sub-Total	6	6	0	1	0	13

ST. LUCIE - 12111						
	7	11	12	13	304	TOTAL
AJC	0	0	0	0	0	0
SHF	2	0	0	0	0	2
PGH	0	0	0	0	0	0
RAM	0	0	0	0	0	0
RBR	0	0	0	0	0	0
Sub-Total	2	0	0	0	0	2

GRAND TOTAL						
	7	11	12	13	304	TOTAL
	33	17	0	1	0	51

AJC	CH 7	CH 11	CH 12	CH 13	SEC 304	TOTAL
JAN	307	10	0	92	0	409
FEB	288	5	0	106	0	399
MAR	483	6	0	109	0	598
APR						0
MAY						0
JUN						0
JUL						0
AUG						0
SEP						0
OCT						0
NOV						0
DEC						0
TOTALS	1078	21	0	307	0	1406

SHF	CH 7	CH 11	CH 12	CH 13	SEC 304	TOTAL
JAN	269	1	0	76	0	346
FEB	267	3	0	109	0	379
MAR	376	3	0	107	0	486
APR						0
MAY						0
JUN						0
JUL						0
AUG						0
SEP						0
OCT						0
NOV						0
DEC						0
TOTALS	912	7	0	292	0	1211

PGH	CH 7	CH 11	CH 12	CH 13	SEC 304	TOTAL
JAN	262	1	0	124	0	387
FEB	274	2	0	123	0	399
MAR	376	5	0	131	0	512
APR						0
MAY						0
JUN						0
JUL						0
AUG						0
SEP						0
OCT						0
NOV						0
DEC						0
TOTALS	912	8	0	378	0	1298

RAM	CH 7	CH 11	CH 12	CH 13	SEC 304	TOTAL
JAN	305	7	0	91	0	403
FEB	287	7	0	103	0	397
MAR	483	3	0	113	0	599
APR						0
MAY						0
JUN						0
JUL						0
AUG						0
SEP						0
OCT						0
NOV						0
DEC						0
TOTALS	1075	17	0	307	0	1399

RBR	CH 7	CH 11	CH 12	CH 13	SEC 304	TOTAL
JAN	254	1	0	114	0	369
FEB	265	0	0	131	0	396
MAR	388	2	0	129	0	519
APR						0
MAY						0
JUN						0
JUL						0
AUG						0
SEP						0
OCT						0
NOV						0
DEC						0
TOTALS	907	3	0	374	0	1284

2004 YEAR-TO-DATE COMPARISON OF BANKRUPTCY CASE FILINGS
BY JUDGE

	AJC	SHF	PGH	RAM	RBR	TOTAL
JAN	409	346	387	403	369	1914
FEB	399	379	399	397	396	1970
MAR	598	486	512	599	519	2714
APR	0	0	0	0	0	0
MAY	0	0	0	0	0	0
JUN	0	0	0	0	0	0
JUL	0	0	0	0	0	0
AUG	0	0	0	0	0	0
SEP	0	0	0	0	0	0
OCT	0	0	0	0	0	0
NOV	0	0	0	0	0	0
DEC	0	0	0	0	0	0
TOTALS	1406	1211	1298	1399	1284	6598
% of Total	21.31	18.35	19.67	21.20	19.46	

2002 YEAR-TO-DATE COMPARISON OF BANKRUPTCY CASE FILINGS
BY JUDGE/CHAPTER

	CH 7	CH 11	CH 12	CH 13	SEC 304	TOTAL
AJC	1078	21	0	307	0	1406
SHF	912	7	0	292	0	1211
PGH	912	8	0	378	0	1298
RAM	1075	17	0	307	0	1399
RBR	907	3	0	374	0	1284
TOTALS	4884	56	0	1658	0	6598

CALENDAR YEAR-TO-DATE COMPARISON

	ENDING MAR04	ENDING MAR03	PERCENT CHANGE
Bankruptcy Case Filings	6598	7198	-8.34
Bankruptcy Case Closings	8042	8359	-3.79
Adversary Filings	346	551	-37.21
Adversary Closings	666	366	81.97

12-MONTH/THREE YEAR COMPARISON

	ENDING MAR04	ENDING MAR03	ENDING MAR02	% CHANGE 04/03	% CHANGE 04/02
Bankruptcy Case Filings	30589	32106	31380	-4.72	-2.52
Bankruptcy Case Closings	31055	31665	28351	-1.93	9.54
Adversary Filings	2566	1672	1281	53.47	100.31
Adversary Closings	2636	1377	1160	91.43	127.24

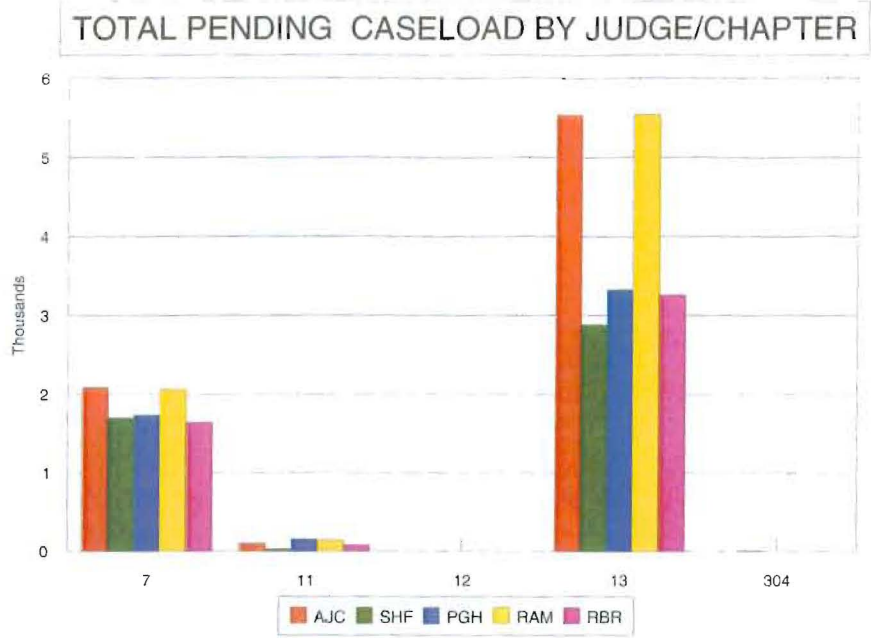
MONTHLY COMPARISON

	MAR04	MAR03	PERCENT CHANGE
Bankruptcy Case Filings	2714	2683	1.16
Bankruptcy Case Closings	2291	2633	-12.99
Adversary Filings	150	241	-37.76
Adversary Closings	174	134	29.85

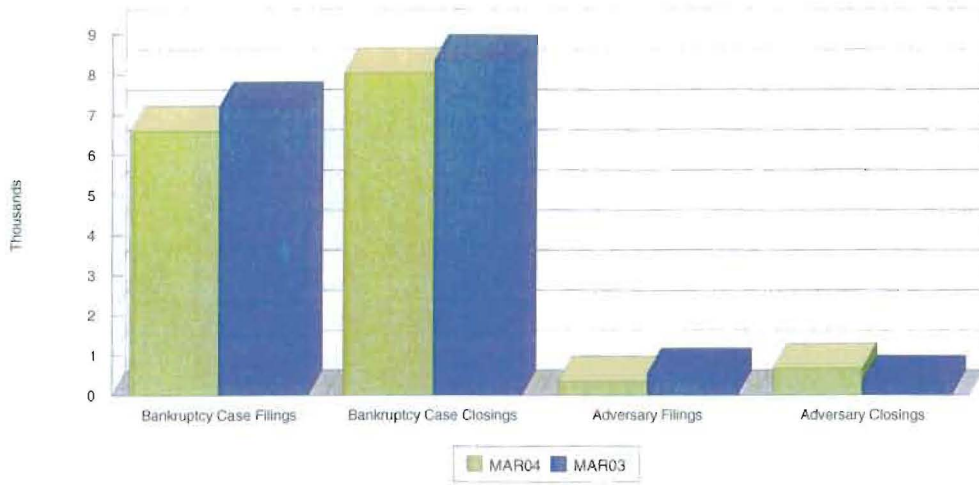
Filings and Closings for Dade Division includes Monroe County

Filings and Closings for Palm Beach Division includes Indian River, Highlands, Martin,

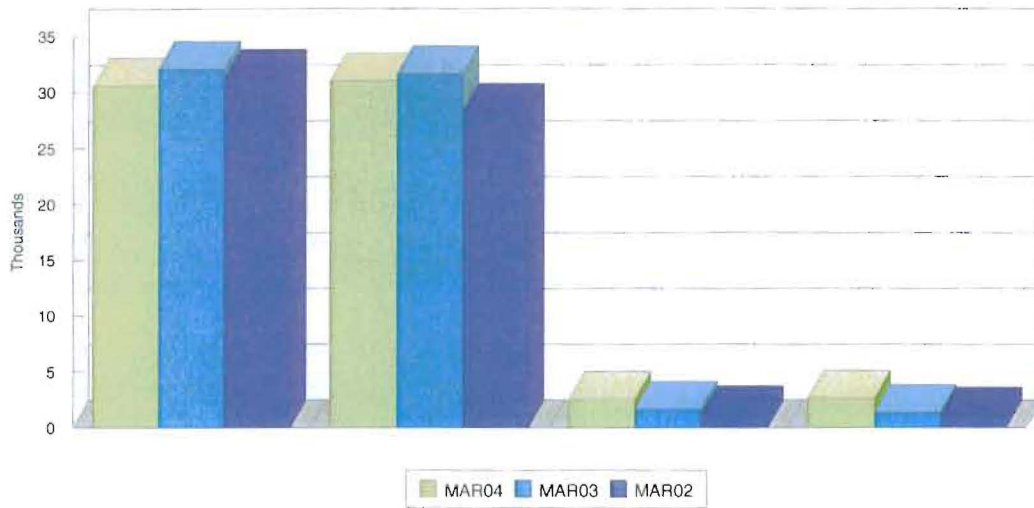
St. Lucie & Okeechobee Counties



CALENDAR YEAR-TO-DATE COMPARISON



12-MONTH/THREE YEAR COMPARISON



MONTHLY COMPARISON

