

# UNITED STATES BANKRUPTCY COURT

## *SOUTHERN DISTRICT OF FLORIDA*

*51 S.W. 1st Avenue  
Room 1401  
Miami, FL 33130*

*Karen Eddy  
Clerk of Court*



## MONTHLY STATISTICAL REPORT

**FEBRUARY 2004**

# **MONTHLY STATISTICAL REPORT**

## **TABLE OF CONTENTS**

	<i>page</i>
<i>I. MONTHLY SARD SUMMARY REPORT</i>	<i>2</i>
<i>II. BK CASE FILINGS SUMMARY REPORT</i>	<i>3</i>
<i>III. BK CASE CLOSINGS SUMMARY REPORT</i>	<i>4</i>
<i>IV. AP CASE FILINGS SUMMARY REPORT</i>	<i>5</i>
<i>V. AP CASE CLOSINGS SUMMARY REPORT</i>	<i>6</i>
<i>VI. BK PRO SE CASES FILING SUMMARY REPORT</i>	<i>7</i>
<i>VII. PENDING CASELOAD REPORT BY JUDGE/CHAPTER</i>	<i>8</i>
<i>VIII. DIVISIONAL CASELOAD REPORT</i>	<i>9</i>
<i>IX. CASE FILING BREAKDOWN BY COUNTY</i>	<i>10</i>
<i>X. BREAKDOWN BY NATURE OF DEBTOR</i>	<i>11</i>
<i>XI. BREAKDOWN BY COUNTY / NATURE - CONSUMER</i>	<i>12</i>
<i>XII. BREAKDOWN BY COUNTY / NATURE - BUSINESS</i>	<i>13</i>
<i>XIII. SUMMARIES AND GRAPHS</i>	<i>14 - 18</i>

**FEBRUARY 2004  
MONTHLY SARD REPORT SUMMARY**

**I. BC101 REPORT OF BANKRUPTCY CASES**

	<b>AJC</b>	<b>SHF</b>	<b>PGH</b>	<b>RAM</b>	<b>RBR</b>	<b>TOTAL</b>
Pending Prior Month	7,841	4,580	5,193	7,887	4,995	30,496
Cases Filed	399	378	397	397	396	1,967
Reopened	13	2	11	15	8	49
Split Cases	0	1	2	0	0	3
Trans. In	0	0	0	0	0	0
Reassigned To	0	2	1	0	0	3
Trans. Out	0	0	0	0	0	0
Reassigned From	0	1	2	0	0	3
Cases Closed	666	433	468	647	482	2,696
<b>Cases Pending</b>	<b>7,587</b>	<b>4,529</b>	<b>5,134</b>	<b>7,652</b>	<b>4,917</b>	<b>29,819</b>

**II. BC109 REPORT OF ADVERSARY CASES**

	<b>AJC</b>	<b>SHF</b>	<b>PGH</b>	<b>RAM</b>	<b>RBR</b>	<b>TOTAL</b>
Pending Prior Month	85	174	336	167	406	1,168
Cases Filed	23	24	39	14	15	115
Reassigned To	0	0	0	0	0	0
Cases Reopened	0	0	0	1	0	1
Cases Closed	7	31	59	27	112	236
Reassigned From	0	0	0	0	0	0
<b>Cases Pending</b>	<b>101</b>	<b>167</b>	<b>316</b>	<b>155</b>	<b>309</b>	<b>1,048</b>

**IV. MONTHLY REPORT OF TRIALS AND OTHER ACTIVITY**

	<b>Contested Proceedings</b>	<b>Miscellaneous Proceedings</b>	<b>Total Hours in Court</b>
AJC	17	42	59
SHF	0	34	34
PGH	1	29	30
RAM	28	35	63
RBR	0	32	32
<b>Total</b>	<b>46</b>	<b>172</b>	<b>218</b>

UNITED STATES BANKRUPTCY COURT  
Southern District of Florida

CASE FILINGS SUMMARY REPORT  
For Cases Filed from 02/01/2004 to 02/29/2004  
Run Date: 03/03/04

Run Time 09:09

## Divisional Breakdown

		Dade					Broward					Palm Beach				
Ch		7	11	12	13	304	7	11	12	13	304	7	11	12	13	304
AJC	288	5	0	106	0	0	0	0	0	0	0	0	0	0	0	0
SHF	0	0	0	0	0	0	0	0	0	0	267	3	0	108	0	
PGH	0	0	0	40	0	179	1	0	83	0	93	1	0	0	0	
RAM	287	7	0	103	0	0	0	0	0	0	0	0	0	0	0	
RBR	0	0	0	43	0	265	0	0	88	0	0	0	0	0	0	
-----																
Tot	575	12	0	292	0	444	1	0	171	0	360	4	0	108	0	
Divisional Totals		879					616					472				

## Totals By Judge

	Chapter 7	Section 304	Chapter 11	Chapter 12	Chapter 13	Totals
AJC	288	0	5	0	106	399
SHF	267	0	3	0	108	378
PGH	272	0	2	0	123	397
RAM	287	0	7	0	103	397
RBR	265	0	0	0	131	396
-----						
Totals	1379	0	17	0	571	
Grand Total:	1967					

"TOTAL DOES NOT INCLUDE SPLIT, TRANSFERRED IN CASES AND INTRA-DISTRICT CASES FILED PRIOR TO THIS MONTH"

UNITED STATES BANKRUPTCY COURT  
Southern District of Florida

CASE CLOSING SUMMARY REPORT  
For Cases Closed from 02/01/2004 to 02/29/2004  
Run Date: 03/02/04

Run Time 14:13

Divisional Breakdown

	Dade					Broward					Palm Beach				
	Ch 7	11	12	13	304	7	11	12	13	304	7	11	12	13	304
AJC	470	2	0	194	0	0	0	0	0	0	0	0	0	0	0
SHP	0	0	0	0	0	0	0	0	0	0	390	3	0	40	0
PGH	3	0	0	39	0	242	0	0	65	0	119	0	0	0	0
RAM	510	6	0	131	0	0	0	0	0	0	0	0	0	0	0
RBR	3	0	0	14	0	401	0	0	64	0	0	0	0	0	0
-----															
Tot	986	8	0	378	0	643	0	0	129	0	509	3	0	40	0
Divisional Totals					1372					772					552

Totals By Judge

	Chapter 7	Section 304	Chapter 11	Chapter 12	Chapter 13	Totals
AJC	470	0	2	0	194	666
SHP	390	0	3	0	40	433
PGH	364	0	0	3	104	468
RAM	510	0	6	0	131	647
RBR	404	0	0	0	78	482
-----						
Totals	2138	0	11	0	547	
Grand Total:	2696					

UNITED STATES BANKRUPTCY COURT  
Southern District of Florida

Adversary Proceedings Case Filing Report  
For Cases Filed from 02/01/2004 to 02/29/2004  
Run Time 12:40

Run Date: 03/02/04

Divisional Breakdown

	Dade	Broward	Palm Beach	Totals
AJC	23	0	0	23
SHF	0	0	24	24
PGH	0	28	11	39
RAM	14	0	0	14
RBR	0	15	0	15
-----				
Totals	37	43	35	115

UNITED STATES BANKRUPTCY COURT  
Southern District of FloridaAdversary Proceedings Case Closing Report  
For Cases Closed from 02/01/2004 to 02/29/2004  
Run Time 12:40

Run Date: 03/02/04

## Divisional Breakdown

	Dade	Broward	Palm Beach	Totals
AJC	7	0	0	7
SHF	0	0	31	31
PGH	0	52	7	59
RAM	27	0	0	27
RBR	1	111	0	112
-----				
Totals	35	163	38	236

UNITED STATES BANKRUPTCY COURT  
SOUTHERN DISTRICT OF FLORIDA

BANKRUPTCY PRO SE CASES FILING SUMMARY REPORT  
For Cases Filed from 02/01/2004 to 02/29/2004

Run Date: 03/12/04

Run Time 11:40

Ch	Dade					Broward					Palm Beach				
	7	11	12	13	304	7	11	12	13	304	7	11	12	13	304
AJC	21	0	0	12	0	0	0	0	0	0	0	0	0	0	0
SHF	0	0	0	0	0	0	0	0	0	0	63	0	0	13	0
PGH	0	0	0	7	0	35	0	0	19	0	16	0	0	0	0
RAM	19	1	0	11	0	0	0	0	0	0	0	0	0	0	0
RBR	0	0	0	15	0	57	0	0	16	0	0	0	0	0	0
-----															
Tot	40	1	0	45	0	92	0	0	35	0	79	0	0	13	0
Divisional Totals					96					127					92

	Totals By Judge					Totals
	Chapter 7	Section 304	Chapter 11	Chapter 12	Chapter 13	
AJC	21	0	0	0	12	33
SHF	63	0	0	0	13	76
PGH	51	0	0	0	26	77
RAM	19	0	1	0	11	31
RBR	57	0	0	0	31	88
-----						
Totals	211	0	1	0	93	305
Grand Total:	305					



**PENDING CASELOAD REPORTS BY JUDGE/CHAPTER  
FEBRUARY 2004**

	7	11	12	13	304	ACT	TOTALS
<b>AJC</b>							
Pending Prior Month	2,084	95	1	5,659	2	0	7,841
Cases Filed	288	5	0	106	0	0	399
Reopened	11	0	0	2	0	0	13
Split Cases	0	0	0	0	0	0	0
Transferred In	0	0	0	0	0	0	0
Reassigned To	0	0	0	0	0	0	0
Converted To	14	0	0	3	0	0	17
Transferred Out	0	0	0	0	0	0	0
Reassigned From	0	0	0	0	0	0	0
Converted From	3	1	0	13	0	0	17
Cases Closed	470	2	0	194	0	0	666
<b>Total Pending</b>	<b>1,924</b>	<b>97</b>	<b>1</b>	<b>5,563</b>	<b>2</b>	<b>0</b>	<b>7,587</b>
<b>SHF</b>							
Pending Prior Month	1,801	32	0	2,740	7	0	4,580
Cases Filed	267	3	0	108	0	0	378
Reopened	2	0	0	0	0	0	2
Split Cases	0	0	0	1	0	0	1
Transferred In	0	0	0	0	0	0	0
Reassigned To	0	0	0	2	0	0	2
Converted To	6	0	0	2	0	0	8
Transferred Out	0	0	0	0	0	0	0
Reassigned From	1	0	0	0	0	0	1
Converted From	2	0	0	6	0	0	8
Cases Closed	390	3	0	40	0	0	433
<b>Total Pending</b>	<b>1,683</b>	<b>32</b>	<b>0</b>	<b>2,807</b>	<b>7</b>	<b>0</b>	<b>4,529</b>
<b>PGH</b>							
Pending Prior Month	1,797	153	0	3,242	1	0	5,193
Cases Filed	272	2	0	123	0	0	397
Reopened	9	0	0	2	0	0	11
Split Cases	2	0	0	0	0	0	2
Transferred In	0	0	0	0	0	0	0
Reassigned To	1	0	0	2	0	0	3
Converted To	3	1	0	1	0	0	5
Transferred Out	0	0	0	0	0	0	0
Reassigned From	0	0	0	2	0	0	2
Converted From	3	0	0	4	0	0	7
Cases Closed	364	0	0	104	0	0	468
<b>Total Pending</b>	<b>1,717</b>	<b>156</b>	<b>0</b>	<b>3,260</b>	<b>1</b>	<b>0</b>	<b>5,134</b>
<b>RAM</b>							
Pending Prior Month	2,099	150	0	5,634	4	0	7,887
Cases Filed	287	7	0	103	0	0	397
Reopened	10	0	0	5	0	0	15
Split Cases	0	0	0	0	0	0	0
Transferred In	0	0	0	0	0	0	0
Reassigned To	0	0	0	0	0	0	0
Converted To	11	0	0	1	0	0	12
Transferred Out	0	0	0	0	0	0	0
Reassigned From	0	0	0	0	0	0	0
Converted From	1	1	0	10	0	0	12
Cases Closed	510	6	0	131	0	0	647
<b>Total Pending</b>	<b>1,896</b>	<b>150</b>	<b>0</b>	<b>5,602</b>	<b>4</b>	<b>0</b>	<b>7,652</b>
<b>RBR</b>							
Pending Prior Month	1,734	83	0	3,178	0	0	4,995
Cases Filed	265	0	0	131	0	0	396
Reopened	5	0	0	3	0	0	8
Split Cases	0	0	0	0	0	0	0
Transferred In	0	0	0	0	0	0	0
Reassigned To	0	0	0	0	0	0	0
Converted To	6	0	0	3	0	0	9
Transferred Out	0	0	0	0	0	0	0
Reassigned From	0	0	0	0	0	0	0
Converted From	3	0	0	6	0	0	9
Cases Closed	404	0	0	78	0	0	482
<b>Total Pending</b>	<b>1,603</b>	<b>83</b>	<b>0</b>	<b>3,231</b>	<b>0</b>	<b>0</b>	<b>4,917</b>
<b>GRAND TOTAL:</b>	<b>8,823</b>	<b>518</b>	<b>1</b>	<b>20,463</b>	<b>14</b>	<b>0</b>	<b>29,819</b>

**AJC PENDING CASE SUMMARY**

CHAPTER	DADE DIVISION	BROWARD DIVISION	PALM BEACH DIVISION	TOTAL
7	1,921	1	2	1,924
11	94	3	0	97
12	1	0	0	1
13	5,563	0	0	5,563
304	2	0	0	2
<b>Sub-Total</b>	<b>7,581</b>	<b>4</b>	<b>2</b>	<b>7,587</b>
<b>Act Cases</b>	<b>0</b>	<b>0</b>	<b>0</b>	<b>0</b>
<b>GRAND TOTALS</b>	<b>7,581</b>	<b>4</b>	<b>2</b>	<b>7,587</b>

**SHF PENDING CASE SUMMARY**

CHAPTER	DADE DIVISION	BROWARD DIVISION	PALM BEACH DIVISION	TOTAL
7	3	2	1,678	1,683
11	0	0	32	32
12	0	0	0	0
13	0	0	2,807	2,807
304	0	0	7	7
<b>Sub-Total</b>	<b>3</b>	<b>2</b>	<b>4,524</b>	<b>4,529</b>
<b>Act Cases</b>	<b>0</b>	<b>0</b>	<b>0</b>	<b>0</b>
<b>GRAND TOTALS</b>	<b>3</b>	<b>2</b>	<b>4,524</b>	<b>4,529</b>

**PGH PENDING CASE SUMMARY**

CHAPTER	DADE DIVISION	BROWARD DIVISION	PALM BEACH DIVISION	TOTAL
7	28	1,072	617	1,717
11	1	108	47	156
12	0	0	0	0
13	1,022	2,237	1	3,260
304	0	1	0	1
<b>Sub-Total</b>	<b>1,051</b>	<b>3,418</b>	<b>665</b>	<b>5,134</b>
<b>Act Cases</b>	<b>0</b>	<b>0</b>	<b>0</b>	<b>0</b>
<b>GRAND TOTALS</b>	<b>1,051</b>	<b>3,418</b>	<b>665</b>	<b>5,134</b>

**RAM PENDING CASE SUMMARY**

CHAPTER	DADE DIVISION	BROWARD DIVISION	PALM BEACH DIVISION	TOTAL
7	1,882	0	14	1,896
11	149	0	1	150
12	0	0	0	0
13	5,602	0	0	5,602
304	4	0	0	4
<b>Sub-Total</b>	<b>7,637</b>	<b>0</b>	<b>15</b>	<b>7,652</b>
<b>Act Cases</b>	<b>0</b>	<b>0</b>	<b>0</b>	<b>0</b>
<b>GRAND TOTALS</b>	<b>7,637</b>	<b>0</b>	<b>15</b>	<b>7,652</b>

**RBR PENDING CASE SUMMARY**

CHAPTER	DADE DIVISION	BROWARD DIVISION	PALM BEACH DIVISION	TOTAL
7	27	1,576	0	1,603
11	0	83	0	83
12	0	0	0	0
13	1,017	2,214	0	3,231
304	0	0	0	0
<b>Sub-Total</b>	<b>1,044</b>	<b>3,873</b>	<b>0</b>	<b>4,917</b>
<b>Act Cases</b>	<b>0</b>	<b>0</b>	<b>0</b>	<b>0</b>
<b>GRAND TOTALS</b>	<b>1,044</b>	<b>3,873</b>	<b>0</b>	<b>4,917</b>

<b>DISTRICT TOTALS</b>	<b>17,316</b>	<b>7,297</b>	<b>5,206</b>	<b>29,819</b>
------------------------	---------------	--------------	--------------	---------------

**FEBRUARY 2004  
CASE FILING SUMMARY BY COUNTY**

<b>DADE COUNTY - 12025</b>						
	7	11	12	13	304	TOTAL
AJC	278	5	0	105	0	388
SHF	0	0	0	0	0	0
PGH	1	0	0	40	0	41
RAM	278	7	0	103	0	388
RBR	0	0	0	43	0	43
<b>Sub-Total</b>	<b>557</b>	<b>12</b>	<b>0</b>	<b>291</b>	<b>0</b>	<b>860</b>

<b>MONROE COUNTY - 12087</b>						
	7	11	12	13	304	TOTAL
AJC	10	0	0	1	0	11
SHF	0	0	0	0	0	0
PGH	0	0	0	0	0	0
RAM	8	0	0	1	0	9
RBR	0	0	0	0	0	0
<b>Sub-Total</b>	<b>18</b>	<b>0</b>	<b>0</b>	<b>2</b>	<b>0</b>	<b>20</b>
						<b>Division Total 880</b>

<b>BROWARD COUNTY - 12011</b>						
	7	11	12	13	304	TOTAL
AJC	0	0	0	0	0	0
SHF	0	0	0	0	0	0
PGH	179	1	0	84	0	264
RAM	0	0	0	0	0	0
RBR	265	0	0	88	0	353
<b>Sub-Total</b>	<b>444</b>	<b>1</b>	<b>0</b>	<b>172</b>	<b>0</b>	<b>617</b>
						<b>Division Total 617</b>

<b>HIGHLANDS COUNTY - 12055</b>						
	7	11	12	13	304	TOTAL
AJC	0	0	0	0	0	0
SHF	9	0	0	7	0	16
PGH	0	0	0	0	0	0
RAM	0	0	0	0	0	0
RBR	0	0	0	0	0	0
<b>Sub-Total</b>	<b>9</b>	<b>0</b>	<b>0</b>	<b>7</b>	<b>0</b>	<b>16</b>

<b>INDIAN RIVER COUNTY - 12061</b>						
	7	11	12	13	304	TOTAL
AJC	0	0	0	0	0	0
SHF	19	0	0	3	0	22
PGH	0	0	0	0	0	0
RAM	0	0	0	0	0	0
RBR	0	0	0	0	0	0
<b>Sub-Total</b>	<b>19</b>	<b>0</b>	<b>0</b>	<b>3</b>	<b>0</b>	<b>22</b>

<b>MARTIN COUNTY - 12085</b>						
	7	11	12	13	304	TOTAL
AJC	0	0	0	0	0	0
SHF	22	0	0	6	0	28
PGH	10	0	0	0	0	10
RAM	0	0	0	0	0	0
RBR	0	0	0	0	0	0
<b>Sub-Total</b>	<b>32</b>	<b>0</b>	<b>0</b>	<b>6</b>	<b>0</b>	<b>38</b>

<b>OKEECHOBEE COUNTY - 12093</b>						
	7	11	12	13	304	TOTAL
AJC	0	0	0	0	0	0
SHF	13	0	0	6	0	19
PGH	0	0	0	0	0	0
RAM	0	0	0	0	0	0
RBR	0	0	0	0	0	0
<b>Sub-Total</b>	<b>13</b>	<b>0</b>	<b>0</b>	<b>6</b>	<b>0</b>	<b>19</b>

<b>PALM BEACH COUNTY - 12099</b>						
	7	11	12	13	304	TOTAL
AJC	0	0	0	0	0	0
SHF	157	2	0	58	0	217
PGH	83	1	0	0	0	84
RAM	0	0	0	0	0	0
RBR	0	0	0	0	0	0
<b>Sub-Total</b>	<b>240</b>	<b>3</b>	<b>0</b>	<b>58</b>	<b>0</b>	<b>301</b>

<b>ST. LUCIE - 12111</b>						
	7	11	12	13	304	TOTAL
AJC	0	0	0	0	0	0
SHF	46	1	0	30	0	77
PGH	0	0	0	0	0	0
RAM	0	0	0	0	0	0
RBR	0	0	0	0	0	0
<b>Sub-Total</b>	<b>46</b>	<b>1</b>	<b>0</b>	<b>30</b>	<b>0</b>	<b>77</b>
						<b>Division Total 473</b>

<b>GRAND TOTAL</b>						
	7	11	12	13	304	TOTAL
	1378	17	0	575	0	1970

**FEBRUARY 2004**  
**CASE FILING SUMMARY BY NATURE OF DEBTOR/DIVISION**

CHAPTER	BUSINESS				CONSUMER				TOTAL
	DADE	BROWARD	PALM BCH	DIV. TOTAL	DADE	BROWARD	PALM BCH	DIV. TOTAL	
7	12	8	12	32	564	437	348	1349	1381
11	12	1	2	15	0	0	2	2	17
12	0	0	0	0	0	0	0	0	0
13	0	0	2	2	292	171	107	570	572
304	0	0	0	0	0	0	0	0	0
<b>TOTAL</b>	<b>24</b>	<b>9</b>	<b>16</b>	<b>49</b>	<b>856</b>	<b>608</b>	<b>457</b>	<b>1921</b>	<b>1970</b>

**DIVISIONAL BUSINESS CASE FILING SUMMARY**

**DADE DIVISION**

CHAPTER	AJC	SHF	PGH	RAM	RBR	TOTAL
7	6	0	0	6	0	12
11	5	0	0	7	0	12
12	0	0	0	0	0	0
13	0	0	0	0	0	0
304	0	0	0	0	0	0
<b>Sub-Total</b>	<b>11</b>	<b>0</b>	<b>0</b>	<b>13</b>	<b>0</b>	<b>24</b>

**BROWARD DIVISION**

CHAPTER	AJC	SHF	PGH	RAM	RBR	TOTAL
7	0	0	4	0	4	8
11	0	0	1	0	0	1
12	0	0	0	0	0	0
13	0	0	0	0	0	0
304	0	0	0	0	0	0
<b>Sub-Total</b>	<b>0</b>	<b>0</b>	<b>5</b>	<b>0</b>	<b>4</b>	<b>9</b>

**PALM BEACH DIVISION**

CHAPTER	AJC	SHF	PGH	RAM	RBR	TOTAL
7	0	7	5	0	0	12
11	0	2	0	0	0	2
12	0	0	0	0	0	0
13	0	2	0	0	0	2
304	0	0	0	0	0	0
<b>Sub-Total</b>	<b>0</b>	<b>11</b>	<b>5</b>	<b>0</b>	<b>0</b>	<b>16</b>
<b>GRAND TOTAL</b>	<b>11</b>	<b>11</b>	<b>10</b>	<b>13</b>	<b>4</b>	<b>49</b>

**DIVISIONAL CONSUMER CASE FILING SUMMARY**

**DADE DIVISION**

CHAPTER	AJC	SHF	PGH	RAM	RBR	TOTAL
7	282	0	1	281	0	564
11	0	0	0	0	0	0
12	0	0	0	0	0	0
13	106	0	40	103	43	292
304	0	0	0	0	0	0
<b>Sub-Total</b>	<b>388</b>	<b>0</b>	<b>41</b>	<b>384</b>	<b>43</b>	<b>856</b>

**BROWARD DIVISION**

CHAPTER	AJC	SHF	PGH	RAM	RBR	TOTAL
7	0	0	176	0	261	437
11	0	0	0	0	0	0
12	0	0	0	0	0	0
13	0	0	83	0	88	171
304	0	0	0	0	0	0
<b>Sub-Total</b>	<b>0</b>	<b>0</b>	<b>259</b>	<b>0</b>	<b>349</b>	<b>608</b>

**PALM BEACH DIVISION**

CHAPTER	AJC	SHF	PGH	RAM	RBR	TOTAL
7	0	260	88	0	0	348
11	0	1	1	0	0	2
12	0	0	0	0	0	0
13	0	107	0	0	0	107
304	0	0	0	0	0	0
<b>Sub-Total</b>	<b>0</b>	<b>368</b>	<b>89</b>	<b>0</b>	<b>0</b>	<b>457</b>
<b>GRAND TOTAL</b>	<b>388</b>	<b>368</b>	<b>389</b>	<b>384</b>	<b>392</b>	<b>1921</b>

**CASE FILING SUMMARY BY COUNTY / CONSUMER - BUSINESS CONSUMERS**

DADE COUNTY - 12025						
	7	11	12	13	304	TOTAL
AJC	272	0	0	105	0	377
SHF	0	0	0	0	0	0
PGH	1	0	0	40	0	41
RAM	272	0	0	103	0	375
RBR	0	0	0	43	0	43
<b>Sub-Total</b>	<b>545</b>	<b>0</b>	<b>0</b>	<b>291</b>	<b>0</b>	<b>836</b>

MONROE COUNTY - 12087						
	7	11	12	13	304	TOTAL
AJC	10	0	0	1	0	11
SHF	0	0	0	0	0	0
PGH	0	0	0	0	0	0
RAM	8	0	0	1	0	9
RBR	0	0	0	0	0	0
<b>Sub-Total</b>	<b>18</b>	<b>0</b>	<b>0</b>	<b>2</b>	<b>0</b>	<b>20</b>
						<b>Division Total 856</b>

BROWARD COUNTY - 12011						
	7	11	12	13	304	TOTAL
AJC	0	0	0	0	0	0
SHF	0	0	0	0	0	0
PGH	175	0	0	84	0	259
RAM	0	0	0	0	0	0
RBR	261	0	0	88	0	349
<b>Sub-Total</b>	<b>436</b>	<b>0</b>	<b>0</b>	<b>172</b>	<b>0</b>	<b>608</b>
						<b>Division Total 608</b>

HIGHLANDS COUNTY - 12055						
	7	11	12	13	304	TOTAL
AJC	0	0	0	0	0	0
SHF	9	0	0	7	0	16
PGH	0	0	0	0	0	0
RAM	0	0	0	0	0	0
RBR	0	0	0	0	0	0
<b>Sub-Total</b>	<b>9</b>	<b>0</b>	<b>0</b>	<b>7</b>	<b>0</b>	<b>16</b>

INDIAN RIVER COUNTY - 12061						
	7	11	12	13	304	TOTAL
AJC	0	0	0	0	0	0
SHF	19	0	0	3	0	22
PGH	0	0	0	0	0	0
RAM	0	0	0	0	0	0
RBR	0	0	0	0	0	0
<b>Sub-Total</b>	<b>19</b>	<b>0</b>	<b>0</b>	<b>3</b>	<b>0</b>	<b>22</b>

MARTIN COUNTY - 12085						
	7	11	12	13	304	TOTAL
AJC	0	0	0	0	0	0
SHF	21	0	0	6	0	27
PGH	8	0	0	0	0	8
RAM	0	0	0	0	0	0
RBR	0	0	0	0	0	0
<b>Sub-Total</b>	<b>29</b>	<b>0</b>	<b>0</b>	<b>6</b>	<b>0</b>	<b>35</b>

OKEECHOBEE COUNTY - 12093						
	7	11	12	13	304	TOTAL
AJC	0	0	0	0	0	0
SHF	13	0	0	5	0	18
PGH	0	0	0	0	0	0
RAM	0	0	0	0	0	0
RBR	0	0	0	0	0	0
<b>Sub-Total</b>	<b>13</b>	<b>0</b>	<b>0</b>	<b>5</b>	<b>0</b>	<b>18</b>

PALM BEACH COUNTY - 12099						
	7	11	12	13	304	TOTAL
AJC	0	0	0	0	0	0
SHF	152	0	0	56	0	208
PGH	80	1	0	0	0	81
RAM	0	0	0	0	0	0
RBR	0	0	0	0	0	0
<b>Sub-Total</b>	<b>232</b>	<b>1</b>	<b>0</b>	<b>56</b>	<b>0</b>	<b>289</b>

ST. LUCIE - 12111						
	7	11	12	13	304	TOTAL
AJC	0	0	0	0	0	0
SHF	46	1	0	30	0	77
PGH	0	0	0	0	0	0
RAM	0	0	0	0	0	0
RBR	0	0	0	0	0	0
<b>Sub-Total</b>	<b>46</b>	<b>1</b>	<b>0</b>	<b>30</b>	<b>0</b>	<b>77</b>
						<b>Division Total 457</b>

GRAND TOTAL						
	7	11	12	13	304	TOTAL
	1347	2	0	572	0	1921

**CASE FILING SUMMARY BY COUNTY / CONSUMER - BUSINESS BUSINESS**

DADE COUNTY - 12025						
	7	11	12	13	304	TOTAL
AJC	6	5	0	0	0	11
SHF	0	0	0	0	0	0
PGH	0	0	0	0	0	0
RAM	6	7	0	0	0	13
RBR	0	0	0	0	0	0
<b>Sub-Total</b>	<b>12</b>	<b>12</b>	<b>0</b>	<b>0</b>	<b>0</b>	<b>24</b>

MONROE COUNTY - 12087						
	7	11	12	13	304	TOTAL
AJC	0	0	0	0	0	0
SHF	0	0	0	0	0	0
PGH	0	0	0	0	0	0
RAM	0	0	0	0	0	0
RBR	0	0	0	0	0	0
<b>Sub-Total</b>	<b>0</b>	<b>0</b>	<b>0</b>	<b>0</b>	<b>0</b>	<b>0</b>
						Division
						<b>Total</b>
						<b>24</b>

BROWARD COUNTY - 12011						
	7	11	12	13	304	TOTAL
AJC	0	0	0	0	0	0
SHF	0	0	0	0	0	0
PGH	4	1	0	0	0	5
RAM	0	0	0	0	0	0
RBR	4	0	0	0	0	4
<b>Sub-Total</b>	<b>8</b>	<b>1</b>	<b>0</b>	<b>0</b>	<b>0</b>	<b>9</b>
						Division
						<b>Total</b>
						<b>9</b>

HIGHLANDS COUNTY - 12055						
	7	11	12	13	304	TOTAL
AJC	0	0	0	0	0	0
SHF	0	0	0	0	0	0
PGH	0	0	0	0	0	0
RAM	0	0	0	0	0	0
RBR	0	0	0	0	0	0
<b>Sub-Total</b>	<b>0</b>	<b>0</b>	<b>0</b>	<b>0</b>	<b>0</b>	<b>0</b>

INDIAN RIVER COUNTY - 12061						
	7	11	12	13	304	TOTAL
AJC	0	0	0	0	0	0
SHF	0	0	0	0	0	0
PGH	0	0	0	0	0	0
RAM	0	0	0	0	0	0
RBR	0	0	0	0	0	0
<b>Sub-Total</b>	<b>0</b>	<b>0</b>	<b>0</b>	<b>0</b>	<b>0</b>	<b>0</b>

MARTIN COUNTY - 12085						
	7	11	12	13	304	TOTAL
AJC	0	0	0	0	0	0
SHF	1	0	0	0	0	1
PGH	2	0	0	0	0	2
RAM	0	0	0	0	0	0
RBR	0	0	0	0	0	0
<b>Sub-Total</b>	<b>3</b>	<b>0</b>	<b>0</b>	<b>0</b>	<b>0</b>	<b>3</b>

OKEECHOBEE COUNTY - 12093						
	7	11	12	13	304	TOTAL
AJC	0	0	0	0	0	0
SHF	0	0	0	1	0	1
PGH	0	0	0	0	0	0
RAM	0	0	0	0	0	0
RBR	0	0	0	0	0	0
<b>Sub-Total</b>	<b>0</b>	<b>0</b>	<b>0</b>	<b>1</b>	<b>0</b>	<b>1</b>

PALM BEACH COUNTY - 12099						
	7	11	12	13	304	TOTAL
AJC	0	0	0	0	0	0
SHF	5	2	0	2	0	9
PGH	3	0	0	0	0	3
RAM	0	0	0	0	0	0
RBR	0	0	0	0	0	0
<b>Sub-Total</b>	<b>8</b>	<b>2</b>	<b>0</b>	<b>2</b>	<b>0</b>	<b>12</b>

ST. LUCIE - 12111						
	7	11	12	13	304	TOTAL
AJC	0	0	0	0	0	0
SHF	0	0	0	0	0	0
PGH	0	0	0	0	0	0
RAM	0	0	0	0	0	0
RBR	0	0	0	0	0	0
<b>Sub-Total</b>	<b>0</b>	<b>0</b>	<b>0</b>	<b>0</b>	<b>0</b>	<b>0</b>
						Division
						<b>Total</b>
						<b>16</b>

GRAND TOTAL						
	7	11	12	13	304	TOTAL
	31	15	0	3	0	49

AJC	CH 7	CH 11	CH 12	CH 13	SEC 304	TOTAL
JAN	307	10	0	92	0	409
FEB	288	5	0	106	0	399
MAR						0
APR						0
MAY						0
JUN						0
JUL						0
AUG						0
SEP						0
OCT						0
NOV						0
DEC						0
<b>TOTALS</b>	<b>595</b>	<b>15</b>	<b>0</b>	<b>198</b>	<b>0</b>	<b>808</b>

SHF	CH 7	CH 11	CH 12	CH 13	SEC 304	TOTAL
JAN	269	1	0	76	0	346
FEB	267	3	0	109	0	379
MAR						0
APR						0
MAY						0
JUN						0
JUL						0
AUG						0
SEP						0
OCT						0
NOV						0
DEC						0
<b>TOTALS</b>	<b>536</b>	<b>4</b>	<b>0</b>	<b>185</b>	<b>0</b>	<b>725</b>

PGH	CH 7	CH 11	CH 12	CH 13	SEC 304	TOTAL
JAN	262	1	0	124	0	387
FEB	274	2	0	123	0	399
MAR						0
APR						0
MAY						0
JUN						0
JUL						0
AUG						0
SEP						0
OCT						0
NOV						0
DEC						0
<b>TOTALS</b>	<b>536</b>	<b>3</b>	<b>0</b>	<b>247</b>	<b>0</b>	<b>786</b>

RAM	CH 7	CH 11	CH 12	CH 13	SEC 304	TOTAL
JAN	305	7	0	91	0	403
FEB	287	7	0	103	0	397
MAR						0
APR						0
MAY						0
JUN						0
JUL						0
AUG						0
SEP						0
OCT						0
NOV						0
DEC						0
<b>TOTALS</b>	<b>592</b>	<b>14</b>	<b>0</b>	<b>194</b>	<b>0</b>	<b>800</b>

RBR	CH 7	CH 11	CH 12	CH 13	SEC 304	TOTAL
JAN	254	1	0	114	0	369
FEB	265	0	0	131	0	396
MAR						0
APR						0
MAY						0
JUN						0
JUL						0
AUG						0
SEP						0
OCT						0
NOV						0
DEC						0
<b>TOTALS</b>	<b>519</b>	<b>1</b>	<b>0</b>	<b>245</b>	<b>0</b>	<b>765</b>

2004 YEAR-TO-DATE COMPARISON OF BANKRUPTCY CASE FILINGS  
BY JUDGE

	AJC	SHF	PGH	RAM	RBR	TOTAL
JAN	409	346	387	403	369	1914
FEB	399	379	399	397	396	1970
MAR	0	0	0	0	0	0
APR	0	0	0	0	0	0
MAY	0	0	0	0	0	0
JUN	0	0	0	0	0	0
JUL	0	0	0	0	0	0
AUG	0	0	0	0	0	0
SEP	0	0	0	0	0	0
OCT	0	0	0	0	0	0
NOV	0	0	0	0	0	0
DEC	0	0	0	0	0	0
TOTALS	808	725	786	800	765	3884
% of Total	20.80	18.67	20.24	20.60	19.70	

2002 YEAR-TO-DATE COMPARISON OF BANKRUPTCY CASE FILINGS  
BY JUDGE/CHAPTER

	CH 7	CH 11	CH 12	CH 13	SEC 304	TOTAL
AJC	595	15	0	198	0	808
SHF	536	4	0	185	0	725
PGH	536	3	0	247	0	786
RAM	592	14	0	194	0	800
RBR	519	1	0	245	0	765
TOTALS	2778	37	0	1069	0	3884



### CALENDAR YEAR-TO-DATE COMPARISON

	ENDING FEB04	ENDING FEB03	PERCENT CHANGE
Bankruptcy Case Filings	3884	4515	-13.98
Bankruptcy Case Closings	5751	5726	0.44
Adversary Filings	196	310	-36.77
Adversary Closings	492	232	112.07

### 12-MONTH/THREE YEAR COMPARISON

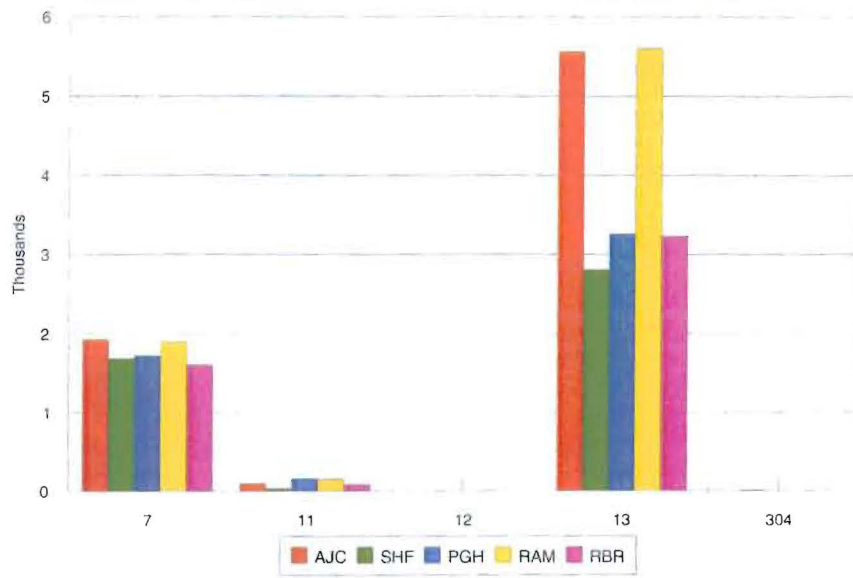
	ENDING FEB04	ENDING FEB03	ENDING FEB02	% CHANGE 04/03	% CHANGE 04/02
Bankruptcy Case Filings	30558	32080	31782	-4.74	-3.85
Bankruptcy Case Closings	31397	31157	28827	0.77	8.92
Adversary Filings	2657	1559	1268	70.43	109.54
Adversary Closings	2596	1379	1094	88.25	137.29

### MONTHLY COMPARISON

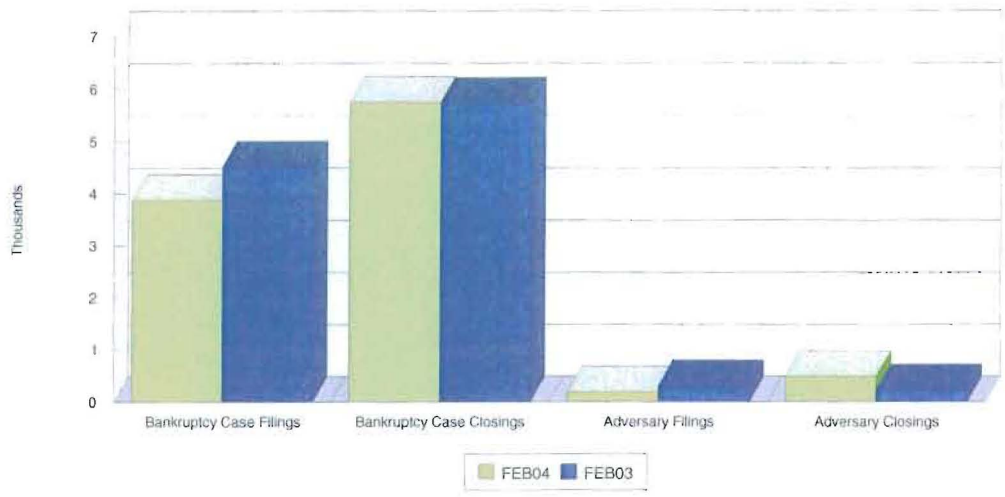
	FEB04	FEB03	PERCENT CHANGE
Bankruptcy Case Filings	1970	2246	-12.29
Bankruptcy Case Closings	2696	2517	7.11
Adversary Filings	115	126	-8.73
Adversary Closings	236	115	105.22

*Filings and Closings for Dade Division includes Monroe County  
 Filings and Closings for Palm Beach Division includes Indian River, Highlands, Martin,  
 St. Lucie & Okeechobee Counties*

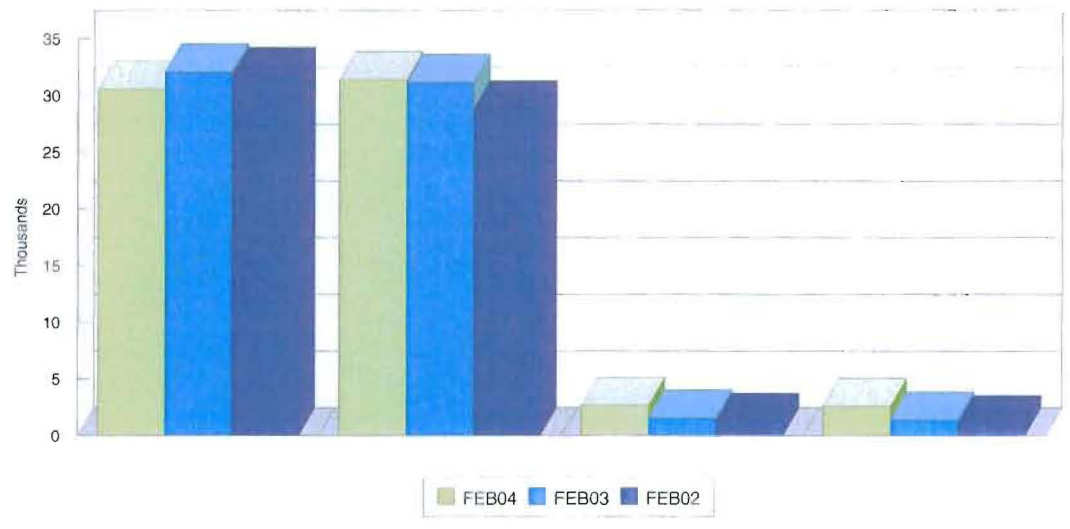
### TOTAL PENDING CASELOAD BY JUDGE/CHAPTER



### CALENDAR YEAR-TO-DATE COMPARISON



### 12-MONTH/THREE YEAR COMPARISON



### MONTHLY COMPARISON

