

UNITED STATES BANKRUPTCY COURT

SOUTHERN DISTRICT OF FLORIDA

*51 S.W. 1st Avenue
Room 1401
Miami, FL 33130*

*Karen Eddy
Clerk of Court*



MONTHLY STATISTICAL REPORT
JANUARY 2005

MONTHLY STATISTICAL REPORT

TABLE OF CONTENTS

	<i>page</i>
<i>I. MONTHLY SARD SUMMARY REPORT</i>	<i>2</i>
<i>II. BK CASE FILINGS SUMMARY REPORT</i>	<i>3</i>
<i>III. BK CASE CLOSINGS SUMMARY REPORT</i>	<i>4</i>
<i>IV. AP CASE FILINGS SUMMARY REPORT</i>	<i>5</i>
<i>V. AP CASE CLOSINGS SUMMARY REPORT</i>	<i>6</i>
<i>VI. BK PRO SE CASES FILING SUMMARY REPORT</i>	<i>7</i>
<i>VII. PENDING CASELOAD REPORT BY JUDGE/CHAPTER</i>	<i>8</i>
<i>VIII. DIVISIONAL CASELOAD REPORT</i>	<i>9</i>
<i>IX. CASE FILING BREAKDOWN BY COUNTY</i>	<i>10</i>
<i>X. BREAKDOWN BY NATURE OF DEBTOR</i>	<i>11</i>
<i>XI. BREAKDOWN BY COUNTY / NATURE - CONSUMER</i>	<i>12</i>
<i>XII. BREAKDOWN BY COUNTY / NATURE - BUSINESS</i>	<i>13</i>
<i>XIII. SUMMARIES AND GRAPHS</i>	<i>14 - 18</i>

JANUARY 2005
MONTHLY SARD REPORT SUMMARY

I. BC101 REPORT OF BANKRUPTCY CASES

	AJC	SHF	PGH	RAM	RBR	TOTAL
Pending Prior Month	7,095	4,337	4,256	7,056	5,942	28,686
Cases Filed	354	317	283	347	331	1,632
Reopened	9	5	8	10	8	40
Split Cases	0	0	0	0	0	0
Trans. In	0	0	0	0	0	0
Reassigned To	0	3	0	0	0	3
Trans. Out	0	0	0	0	0	0
Reassigned From	0	0	3	0	0	3
Cases Closed	723	452	707	661	837	3,380
Cases Pending	6,735	4,210	3,837	6,752	5,444	26,978

II. BC109 REPORT OF ADVERSARY CASES

	AJC	SHF	PGH	RAM	RBR	TOTAL
Pending Prior Month	134	167	181	234	118	834
Cases Filed	22	12	9	10	11	64
Trans. In	0	0	0	0	0	0
Reassigned To	0	0	0	0	0	0
Cases Reopened	0	1	0	0	0	1
Cases Closed	13	21	35	18	28	115
Reassigned From	0	0	0	0	0	0
Cases Pending	143	159	155	226	101	784

IV. MONTHLY REPORT OF TRIALS AND OTHER ACTIVITY

	Contested Proceedings	Miscellaneous Proceedings	Total Hours in Court
AJC	2	20	22
SHF	0	40	40
PGH	0	22	22
RAM	29	31	60
RBR	2	20	22
Total	33	133	166

UNITED STATES BANKRUPTCY COURT
Southern District of Florida

CASE FILINGS SUMMARY REPORT
For Cases Filed from 01/01/2005 to 01/31/2005
Run Date: 02/01/05

Run Time 15:54

Divisional Breakdown

	Dade					Broward					Palm Beach					
	Ch	7	11	12	13	304	7	11	12	13	304	7	11	12	13	304
AJC	281	2	0	71	0	0	0	0	0	0	0	0	0	0	0	0
SHF	0	0	0	0	0	0	0	0	0	0	227	4	0	86	0	
PGH	0	0	0	0	0	120	0	0	60	0	102	1	0	0	0	
RAM	274	1	0	72	0	0	0	0	0	0	0	0	0	0	0	
RBR	0	0	0	44	0	226	1	0	60	0	0	0	0	0	0	

Tot	555	3	0	187	0	346	1	0	120	0	329	5	0	86	0	
Divisional Totals				745					467					420		

Totals By Judge

	Chapter 7	Section 304	Chapter 11	Chapter 12	Chapter 13	Totals
AJC	281	0	2	0	71	354
SHF	227	0	4	0	86	317
PGH	222	0	1	0	60	283
RAM	274	0	1	0	72	347
RBR	226	0	1	0	104	331

Totals	1230	0	9	0	393	

Grand Total: 1632

"TOTAL DOES NOT INCLUDE SPLIT, TRANSFERRED IN CASES AND INTRA-DISTRICT CASES FILED PRIOR TO THIS MONTH"

UNITED STATES BANKRUPTCY COURT
Southern District of Florida

CASE CLOSING SUMMARY REPORT
For Cases Closed from 01/01/2005 to 01/31/2005
Run Date: 02/02/05

Run Time 08:49

Divisional Breakdown

		Dade				Broward				Palm Beach					
Ch	7	11	12	13	304	7	11	12	13	304	7	11	12	13	304
AJC	518	0	0	205	0	0	0	0	0	0	0	0	0	0	0
SHF	1	0	0	0	0	0	0	0	0	0	419	0	0	32	0
PGH	5	0	0	0	0	303	1	0	280	0	114	4	0	0	0
RAM	501	2	0	158	0	0	0	0	0	0	0	0	0	0	0
RBR	2	0	0	58	0	399	5	0	373	0	0	0	0	0	0

Tot	1027	2	0	421	0	702	6	0	653	0	533	4	0	32	0
Divisional Totals				1450					1361					569	

Totals By Judge

	Chapter 7	Section 304	Chapter 11	Chapter 12	Chapter 13	Totals
AJC	518	0	0	0	205	723
SHF	420	0	0	0	32	452
PGH	422	0	5	0	280	707
RAM	501	0	2	0	158	661
RBR	401	0	5	0	431	837

Totals	2262	0	12	0	1106	
Grand Total:	3380					

UNITED STATES BANKRUPTCY COURT
Southern District of Florida

Adversary Proceedings Case Filing Report
For Cases Filed from 01/01/2005 to 01/31/2005
Run Time 16:19

Run Date: 02/01/05

Divisional Breakdown

	Dade	Broward	Palm Beach	Totals
AJC	22	0	0	22
SHF	0	0	12	12
PGH	0	5	4	9
RAM	10	0	0	10
RBR	0	11	0	11

Totals	32	16	16	64
--------	----	----	----	----

+1 = 65

$\frac{1}{17}$

1 Reopen
SHF

UNITED STATES BANKRUPTCY COURT
Southern District of FloridaAdversary Proceedings Case Closing Report
For Cases Closed from 01/01/2005 to 01/31/2005
Run Time 16:19

Run Date: 02/01/05

Divisional Breakdown

	Dade	Broward	Palm Beach	Totals
AJC	13	0	0	13
SHF	0	0	21	21
PGH	0	17	18	35
RAM	18	0	0	18
RBR	0	28	0	28

Totals	31	45	39	115

UNITED STATES BANKRUPTCY COURT
SOUTHERN DISTRICT OF FLORIDA

BANKRUPTCY PRO SE CASES FILING SUMMARY REPORT
For Cases Filed from 01/01/2005 to 01/31/2005

Run Date: 02/01/05

Run Time 16:29

Divisional Breakdown																
Dade					Broward					Palm Beach						
Ch	7	11	12	13	304	7	11	12	13	304	7	11	12	13	304	
AJC	16	0	0	9	0	0	0	0	0	0	0	0	0	0	0	
SHF	0	0	0	0	0	0	0	0	0	0	57	0	0	11	0	
PGH	0	0	0	0	0	29	0	0	9	0	23	0	0	0	0	
RAM	10	0	0	8	0	0	0	0	0	0	0	0	0	0	0	
RBR	0	0	0	13	0	50	0	0	7	0	0	0	0	0	0	

Tot	26	0	0	30	0	79	0	0	16	0	80	0	0	11	0	
Divisional Totals				56	95				91							

Totals By Judge						
	Chapter 7	Section 304	Chapter 11	Chapter 12	Chapter 13	Totals
AJC	16	0	0	0	9	25
SHF	57	0	0	0	11	68
PGH	52	0	0	0	9	61
RAM	10	0	0	0	8	18
RBR	50	0	0	0	20	70

Totals	185	0	0	0	57	242
Grand Total:	242					

PENDING CASELOAD REPORTS BY JUDGE/CHAPTER
JANUARY 2005

AJC	7	11	12	13	304	ACT	TOTALS
Pending Prior Month	2,252	76	1	4,763	3	0	7,095
Cases Filed	281	2	0	71	0	0	354
Reopened	5	0	0	4	0	0	9
Split Cases	0	0	0	0	0	0	0
Transferred In	0	0	0	0	0	0	0
Reassigned To	0	0	0	0	0	0	0
Converted To	9	0	0	5	0	0	14
Transferred Out	0	0	0	0	0	0	0
Reassigned From	0	0	0	0	0	0	0
Converted From	5	0	0	9	0	0	14
Cases Closed	518	0	0	205	0	0	723
Total Pending	2,024	78	1	4,629	3	0	6,735

SHF	7	11	12	13	304	ACT	TOTALS
Pending Prior Month	1,840	24	0	2,468	5	0	4,337
Cases Filed	227	4	0	86	0	0	317
Reopened	3	0	0	2	0	0	5
Split Cases	0	0	0	0	0	0	0
Transferred In	0	0	0	0	0	0	0
Reassigned To	0	0	0	3	0	0	3
Converted To	1	2	0	3	0	0	6
Transferred Out	0	0	0	0	0	0	0
Reassigned From	0	0	0	0	0	0	0
Converted From	5	0	0	1	0	0	6
Cases Closed	420	0	0	32	0	0	452
Total Pending	1,646	30	0	2,529	5	0	4,210

PGH	7	11	12	13	304	ACT	TOTALS
Pending Prior Month	1,779	146	0	2,330	1	0	4,256
Cases Filed	222	1	0	60	0	0	283
Reopened	7	0	0	1	0	0	8
Split Cases	0	0	0	0	0	0	0
Transferred In	0	0	0	0	0	0	0
Reassigned To	0	0	0	0	0	0	0
Converted To	1	2	0	4	0	0	7
Transferred Out	0	0	0	0	0	0	0
Reassigned From	0	0	0	3	0	0	3
Converted From	5	0	0	2	0	0	7
Cases Closed	422	5	0	280	0	0	707
Total Pending	1,582	144	0	2,110	1	0	3,837

RAM	7	11	12	13	304	ACT	TOTALS
Pending Prior Month	2,160	86	0	4,807	3	0	7,056
Cases Filed	274	1	0	72	0	0	347
Reopened	6	0	0	4	0	0	10
Split Cases	0	0	0	0	0	0	0
Transferred In	0	0	0	0	0	0	0
Reassigned To	0	0	0	0	0	0	0
Converted To	6	0	0	1	0	0	7
Transferred Out	0	0	0	0	0	0	0
Reassigned From	0	0	0	0	0	0	0
Converted From	1	1	0	5	0	0	7
Cases Closed	501	2	0	158	0	0	661
Total Pending	1,944	84	0	4,721	3	0	6,752

RBR	7	11	12	13	304	ACT	TOTALS
Pending Prior Month	1,682	70	0	4,190	0	0	5,942
Cases Filed	226	1	0	104	0	0	331
Reopened	6	0	0	2	0	0	8
Split Cases	0	0	0	0	0	0	0
Transferred In	0	0	0	0	0	0	0
Reassigned To	0	0	0	0	0	0	0
Converted To	7	0	0	1	0	0	8
Transferred Out	0	0	0	0	0	0	0
Reassigned From	0	0	0	0	0	0	0
Converted From	1	0	0	7	0	0	8
Cases Closed	401	5	0	431	0	0	837
Total Pending	1,519	66	0	3,859	0	0	5,444

GRAND TOTAL:	8,715	402	1	17,848	12	0	26,978
---------------------	--------------	------------	----------	---------------	-----------	----------	---------------

AJC PENDING CASE SUMMARY

CHAPTER	DADE DIVISION	BROWARD DIVISION	PALM BEACH DIVISION	TOTAL
7	2,023	1	0	2,024
11	76	2	0	78
12	1	0	0	1
13	4,629	0	0	4,629
304	3	0	0	3
Sub-Total	6,732	3	0	6,735
Act Cases	0	0	0	0
GRAND TOTALS	6,732	3	0	6,735

SHF PENDING CASE SUMMARY

CHAPTER	DADE DIVISION	BROWARD DIVISION	PALM BEACH DIVISION	TOTAL
7	1	2	1,643	1,646
11	0	0	30	30
12	0	0	0	0
13	0	0	2,529	2,529
304	0	0	5	5
Sub-Total	1	2	4,207	4,210
Act Cases	0	0	0	0
GRAND TOTALS	1	2	4,207	4,210

PGH PENDING CASE SUMMARY

CHAPTER	DADE DIVISION	BROWARD DIVISION	PALM BEACH DIVISION	TOTAL
7	19	920	643	1,582
11	1	114	29	144
12	0	0	0	0
13	0	2,110	0	2,110
304	0	1	0	1
Sub-Total	20	3,145	672	3,837
Act Cases	0	0	0	0
GRAND TOTALS	20	3,145	672	3,837

RAM PENDING CASE SUMMARY

CHAPTER	DADE DIVISION	BROWARD DIVISION	PALM BEACH DIVISION	TOTAL
7	1,942	0	2	1,944
11	83	0	1	84
12	0	0	0	0
13	4,721	0	0	4,721
304	3	0	0	3
Sub-Total	6,749	0	3	6,752
Act Cases	0	0	0	0
GRAND TOTALS	6,749	0	3	6,752

RBR PENDING CASE SUMMARY

CHAPTER	DADE DIVISION	BROWARD DIVISION	PALM BEACH DIVISION	TOTAL
7	26	1,492	1	1,519
11	0	66	0	66
12	0	0	0	0
13	1,750	2,109	0	3,859
304	0	0	0	0
Sub-Total	1,776	3,667	1	5,444
Act Cases	0	0	0	0
GRAND TOTALS	1,776	3,667	1	5,444

DISTRICT TOTALS	15,278	6,817	4,883	26,978
------------------------	---------------	--------------	--------------	---------------

CASE FILING SUMMARY BY COUNTY

DADE COUNTY - 12025

	7	11	12	13	304	TOTAL
AJC	276	2	0	71	0	349
SHF	0	0	0	0	0	0
PGH	0	0	0	0	0	0
RAM	269	1	0	72	0	342
RBR	0	0	0	44	0	44
Sub-Total	545	3	0	187	0	735

MONROE COUNTY - 12087

	7	11	12	13	304	TOTAL
AJC	5	0	0	0	0	5
SHF	0	0	0	0	0	0
PGH	0	0	0	0	0	0
RAM	5	0	0	0	0	5
RBR	0	0	0	0	0	0
Sub-Total	10	0	0	0	0	10

Division Total 745

BROWARD COUNTY - 12011

	7	11	12	13	304	TOTAL
AJC	0	0	0	0	0	0
SHF	0	0	0	0	0	0
PGH	120	0	0	60	0	180
RAM	0	0	0	0	0	0
RBR	226	1	0	60	0	287
Sub-Total	346	1	0	120	0	467

Division Total 467

HIGHLANDS COUNTY - 12055

	7	11	12	13	304	TOTAL
AJC	0	0	0	0	0	0
SHF	20	0	0	3	0	23
PGH	0	0	0	0	0	0
RAM	0	0	0	0	0	0
RBR	0	0	0	0	0	0
Sub-Total	20	0	0	3	0	23

INDIAN RIVER COUNTY - 12061

	7	11	12	13	304	TOTAL
AJC	0	0	0	0	0	0
SHF	24	0	0	7	0	31
PGH	1	0	0	0	0	1
RAM	0	0	0	0	0	0
RBR	0	0	0	0	0	0
Sub-Total	25	0	0	7	0	32

MARTIN COUNTY - 12085

	7	11	12	13	304	TOTAL
AJC	0	0	0	0	0	0
SHF	10	0	0	2	0	12
PGH	9	0	0	0	0	9
RAM	0	0	0	0	0	0
RBR	0	0	0	0	0	0
Sub-Total	19	0	0	2	0	21

OKEECHOBEE COUNTY - 12093

	7	11	12	13	304	TOTAL
AJC	0	0	0	0	0	0
SHF	9	0	0	6	0	15
PGH	0	0	0	0	0	0
RAM	0	0	0	0	0	0
RBR	0	0	0	0	0	0
Sub-Total	9	0	0	6	0	15

PALM BEACH COUNTY - 12099

	7	11	12	13	304	TOTAL
AJC	0	0	0	0	0	0
SHF	118	4	0	53	0	175
PGH	92	1	0	0	0	93
RAM	0	0	0	0	0	0
RBR	0	0	0	0	0	0
Sub-Total	210	5	0	53	0	268

ST. LUCIE - 12111

	7	11	12	13	304	TOTAL
AJC	0	0	0	0	0	0
SHF	46	0	0	15	0	61
PGH	0	0	0	0	0	0
RAM	0	0	0	0	0	0
RBR	0	0	0	0	0	0
Sub-Total	46	0	0	15	0	61

Division Total 420

GRAND TOTAL	1230	9	0	393	0	1632
--------------------	-------------	----------	----------	------------	----------	-------------

JANUARY 2005

CASE FILING SUMMARY BY NATURE OF DEBTOR/DIVISION

CHAPTER	BUSINESS				CONSUMER				TOTAL
	DADE	BROWARD	PALM BCH	DIV. TOTAL	DADE	BROWARD	PALM BCH	DIV. TOTAL	
7	6	7	10	23	549	339	319	1207	1230
11	3	1	4	8	0	0	1	1	9
12	0	0	0	0	0	0	0	0	0
13	0	0	0	0	187	120	86	393	393
304	0	0	0	0	0	0	0	0	0
TOTAL	9	8	14	31	736	459	406	1601	1632

DIVISIONAL BUSINESS CASE FILING SUMMARY

DADE DIVISION

CHAPTER	AJC	SHF	PGH	RAM	RBR	TOTAL
7	4	0	0	2	0	6
11	2	0	0	1	0	3
12	0	0	0	0	0	0
13	0	0	0	0	0	0
304	0	0	0	0	0	0
Sub-Total	6	0	0	3	0	9

BROWARD DIVISION

CHAPTER	AJC	SHF	PGH	RAM	RBR	TOTAL
7	0	0	3	0	4	7
11	0	0	0	0	1	1
12	0	0	0	0	0	0
13	0	0	0	0	0	0
304	0	0	0	0	0	0
Sub-Total	0	0	3	0	5	8

PALM BEACH DIVISION

CHAPTER	AJC	SHF	PGH	RAM	RBR	TOTAL
7	0	5	5	0	0	10
11	0	4	0	0	0	4
12	0	0	0	0	0	0
13	0	0	0	0	0	0
304	0	0	0	0	0	0
Sub-Total	0	9	5	0	0	14
GRAND TOTAL	6	9	8	3	5	31

DIVISIONAL CONSUMER CASE FILING SUMMARY

DADE DIVISION

CHAPTER	AJC	SHF	PGH	RAM	RBR	TOTAL
7	277	0	0	272	0	549
11	0	0	0	0	0	0
12	0	0	0	0	0	0
13	71	0	0	72	44	187
304	0	0	0	0	0	0
Sub-Total	348	0	0	344	44	736

BROWARD DIVISION

CHAPTER	AJC	SHF	PGH	RAM	RBR	TOTAL
7	0	0	117	0	222	339
11	0	0	0	0	0	0
12	0	0	0	0	0	0
13	0	0	60	0	60	120
304	0	0	0	0	0	0
Sub-Total	0	0	177	0	282	459

PALM BEACH DIVISION

CHAPTER	AJC	SHF	PGH	RAM	RBR	TOTAL
7	0	222	97	0	0	319
11	0	0	1	0	0	1
12	0	0	0	0	0	0
13	0	86	0	0	0	86
304	0	0	0	0	0	0
Sub-Total	0	308	98	0	0	406
GRAND TOTAL	348	308	275	344	326	1601

CASE FILING SUMMARY BY COUNTY / CONSUMER - BUSINESS

CONSUMERS

DADE COUNTY - 12025

	7	11	12	13	304	TOTAL
AJC	272	0	0	71	0	343
SHF	0	0	0	0	0	0
PGH	0	0	0	0	0	0
RAM	267	0	0	72	0	339
RBR	0	0	0	44	0	44
Sub-Total	539	0	0	187	0	726

MONROE COUNTY - 12087

	7	11	12	13	304	TOTAL
AJC	5	0	0	0	0	5
SHF	0	0	0	0	0	0
PGH	0	0	0	0	0	0
RAM	5	0	0	0	0	5
RBR	0	0	0	0	0	0
Sub-Total	10	0	0	0	0	10

0 Division
Total 736

BROWARD COUNTY - 12011

	7	11	12	13	304	TOTAL
AJC	0	0	0	0	0	0
SHF	0	0	0	0	0	0
PGH	117	0	0	60	0	177
RAM	0	0	0	0	0	0
RBR	222	0	0	60	0	282
Sub-Total	339	0	0	120	0	459

Division
Total 459

HIGHLANDS COUNTY - 12055

	7	11	12	13	304	TOTAL
AJC	0	0	0	0	0	0
SHF	20	0	0	3	0	23
PGH	0	0	0	0	0	0
RAM	0	0	0	0	0	0
RBR	0	0	0	0	0	0
Sub-Total	20	0	0	3	0	23

INDIAN RIVER COUNTY - 12061

	7	11	12	13	304	TOTAL
AJC	0	0	0	0	0	0
SHF	24	0	0	7	0	31
PGH	1	0	0	0	0	1
RAM	0	0	0	0	0	0
RBR	0	0	0	0	0	0
Sub-Total	25	0	0	7	0	32

MARTIN COUNTY - 12085

	7	11	12	13	304	TOTAL
AJC	0	0	0	0	0	0
SHF	10	0	0	2	0	12
PGH	9	0	0	0	0	9
RAM	0	0	0	0	0	0
RBR	0	0	0	0	0	0
Sub-Total	19	0	0	2	0	21

OKEECHOBEE COUNTY - 12093

	7	11	12	13	304	TOTAL
AJC	0	0	0	0	0	0
SHF	9	0	0	6	0	15
PGH	0	0	0	0	0	0
RAM	0	0	0	0	0	0
RBR	0	0	0	0	0	0
Sub-Total	9	0	0	6	0	15

PALM BEACH COUNTY - 12099

	7	11	12	13	304	TOTAL
AJC	0	0	0	0	0	0
SHF	114	0	0	53	0	167
PGH	87	1	0	0	0	88
RAM	0	0	0	0	0	0
RBR	0	0	0	0	0	0
Sub-Total	201	1	0	53	0	255

ST. LUCIE - 12111

	7	11	12	13	304	TOTAL
AJC	0	0	0	0	0	0
SHF	45	0	0	15	0	60
PGH	0	0	0	0	0	0
RAM	0	0	0	0	0	0
RBR	0	0	0	0	0	0
Sub-Total	45	0	0	15	0	60

0 Division
Total 406

GRAND TOTAL	1207	1	0	393	0	1601
--------------------	-------------	----------	----------	------------	----------	-------------

**CASE FILING SUMMARY BY COUNTY / CONSUMER - BUSINESS
BUSINESS**

DADE COUNTY - 12025

	7	11	12	13	304	TOTAL
AJC	4	2	0	0	0	6
SHF	0	0	0	0	0	0
PGH	0	0	0	0	0	0
RAM	2	1	0	0	0	3
RBR	0	0	0	0	0	0
Sub-Total	6	3	0	0	0	9

MONROE COUNTY - 12087

	7	11	12	13	304	TOTAL
AJC	0	0	0	0	0	0
SHF	0	0	0	0	0	0
PGH	0	0	0	0	0	0
RAM	0	0	0	0	0	0
RBR	0	0	0	0	0	0
Sub-Total	0	0	0	0	0	0

0 Division
0 Total 9

BROWARD COUNTY - 12011

	7	11	12	13	304	TOTAL
AJC	0	0	0	0	0	0
SHF	0	0	0	0	0	0
PGH	3	0	0	0	0	3
RAM	0	0	0	0	0	0
RBR	4	1	0	0	0	5
Sub-Total	7	1	0	0	0	8

5 Division
8 Total 8

HIGHLANDS COUNTY - 12055

	7	11	12	13	304	TOTAL
AJC	0	0	0	0	0	0
SHF	0	0	0	0	0	0
PGH	0	0	0	0	0	0
RAM	0	0	0	0	0	0
RBR	0	0	0	0	0	0
Sub-Total	0	0	0	0	0	0

INDIAN RIVER COUNTY - 12061

	7	11	12	13	304	TOTAL
AJC	0	0	0	0	0	0
SHF	0	0	0	0	0	0
PGH	0	0	0	0	0	0
RAM	0	0	0	0	0	0
RBR	0	0	0	0	0	0
Sub-Total	0	0	0	0	0	0

MARTIN COUNTY - 12085

	7	11	12	13	304	TOTAL
AJC	0	0	0	0	0	0
SHF	0	0	0	0	0	0
PGH	0	0	0	0	0	0
RAM	0	0	0	0	0	0
RBR	0	0	0	0	0	0
Sub-Total	0	0	0	0	0	0

OKEECHOBEE COUNTY - 12093

	7	11	12	13	304	TOTAL
AJC	0	0	0	0	0	0
SHF	0	0	0	0	0	0
PGH	0	0	0	0	0	0
RAM	0	0	0	0	0	0
RBR	0	0	0	0	0	0
Sub-Total	0	0	0	0	0	0

PALM BEACH COUNTY - 12099

	7	11	12	13	304	TOTAL
AJC	0	0	0	0	0	0
SHF	4	4	0	0	0	8
PGH	5	0	0	0	0	5
RAM	0	0	0	0	0	0
RBR	0	0	0	0	0	0
Sub-Total	9	4	0	0	0	13

ST. LUCIE - 12111

	7	11	12	13	304	TOTAL
AJC	0	0	0	0	0	0
SHF	1	0	0	0	0	1
PGH	0	0	0	0	0	0
RAM	0	0	0	0	0	0
RBR	0	0	0	0	0	0
Sub-Total	1	0	0	0	0	1

0 Division
1 Total 14

GRAND TOTAL	23	8	0	0	0	31
--------------------	-----------	----------	----------	----------	----------	-----------

AJC	CH 7	CH 11	CH 12	CH 13	SEC 304	TOTAL
JAN	281	2	0	71	0	354
FEB	0	0	0	0	0	0
MAR	0	0	0	0	0	0
APR	0	0	0	0	0	0
MAY	0	0	0	0	0	0
JUN	0	0	0	0	0	0
JUL	0	0	0	0	0	0
AUG	0	0	0	0	0	0
SEP	0	0	0	0	0	0
OCT	0	0	0	0	0	0
NOV	0	0	0	0	0	0
DEC	0	0	0	0	0	0
TOTALS	281	2	0	71	0	354

SHF	CH 7	CH 11	CH 12	CH 13	SEC 304	TOTAL
JAN	227	4	0	86	0	317
FEB	0	0	0	0	0	0
MAR	0	0	0	0	0	0
APR	0	0	0	0	0	0
MAY	0	0	0	0	0	0
JUN	0	0	0	0	0	0
JUL	0	0	0	0	0	0
AUG	0	0	0	0	0	0
SEP	0	0	0	0	0	0
OCT	0	0	0	0	0	0
NOV	0	0	0	0	0	0
DEC	0	0	0	0	0	0
TOTALS	227	4	0	86	0	317

PGH	CH 7	CH 11	CH 12	CH 13	SEC 304	TOTAL
JAN	222	1	0	60	0	283
FEB	0	0	0	0	0	0
MAR	0	0	0	0	0	0
APR	0	0	0	0	0	0
MAY	0	0	0	0	0	0
JUN	0	0	0	0	0	0
JUL	0	0	0	0	0	0
AUG	0	0	0	0	0	0
SEP	0	0	0	0	0	0
OCT	0	0	0	0	0	0
NOV	0	0	0	0	0	0
DEC	0	0	0	0	0	0
TOTALS	222	1	0	60	0	283

RAM	CH 7	CH 11	CH 12	CH 13	SEC 304	TOTAL
JAN	274	1	0	72	0	347
FEB	0	0	0	0	0	0
MAR	0	0	0	0	0	0
APR	0	0	0	0	0	0
MAY	0	0	0	0	0	0
JUN	0	0	0	0	0	0
JUL	0	0	0	0	0	0
AUG	0	0	0	0	0	0
SEP	0	0	0	0	0	0
OCT	0	0	0	0	0	0
NOV	0	0	0	0	0	0
DEC	0	0	0	0	0	0
TOTALS	274	1	0	72	0	347

RBR	CH 7	CH 11	CH 12	CH 13	SEC 304	TOTAL
JAN	226	1	0	104	0	331
FEB	0	0	0	0	0	0
MAR	0	0	0	0	0	0
APR	0	0	0	0	0	0
MAY	0	0	0	0	0	0
JUN	0	0	0	0	0	0
JUL	0	0	0	0	0	0
AUG	0	0	0	0	0	0
SEP	0	0	0	0	0	0
OCT	0	0	0	0	0	0
NOV	0	0	0	0	0	0
DEC	0	0	0	0	0	0
TOTALS	226	1	0	104	0	331

**2005 YEAR-TO-DATE COMPARISON OF BANKRUPTCY CASE FILINGS
BY JUDGE**

	AJC	SHF	PGH	RAM	RBR	TOTAL
JAN	354	317	283	347	331	1632
FEB	0	0	0	0	0	0
MAR	0	0	0	0	0	0
APR	0	0	0	0	0	0
MAY	0	0	0	0	0	0
JUN	0	0	0	0	0	0
JUL	0	0	0	0	0	0
AUG	0	0	0	0	0	0
SEP	0	0	0	0	0	0
OCT	0	0	0	0	0	0
NOV	0	0	0	0	0	0
DEC	0	0	0	0	0	0
TOTALS	354	317	283	347	331	1632
% of Total	21.69	19.42	17.34	21.26	20.28	

**2005 YEAR-TO-DATE COMPARISON OF BANKRUPTCY CASE FILINGS
BY JUDGE/CHAPTER**

	CH 7	CH 11	CH 12	CH 13	SEC 304	TOTAL
AJC	281	2	0	71	0	354
SHF	227	4	0	86	0	317
PGH	222	1	0	60	0	283
RAM	274	1	0	72	0	347
RBR	226	1	0	104	0	331
TOTALS	1230	9	0	393	0	1632

CALENDAR YEAR-TO-DATE COMPARISON

	ENDING JAN 05	ENDING JAN 04	PERCENT CHANGE
Bankruptcy Case Filings	1632	1914	-14.73
Bankruptcy Case Closings	3380	3055	10.64
Adversary Filings	64	81	-20.99
Adversary Closings	115	256	-55.08

12-MONTH/THREE YEAR COMPARISON

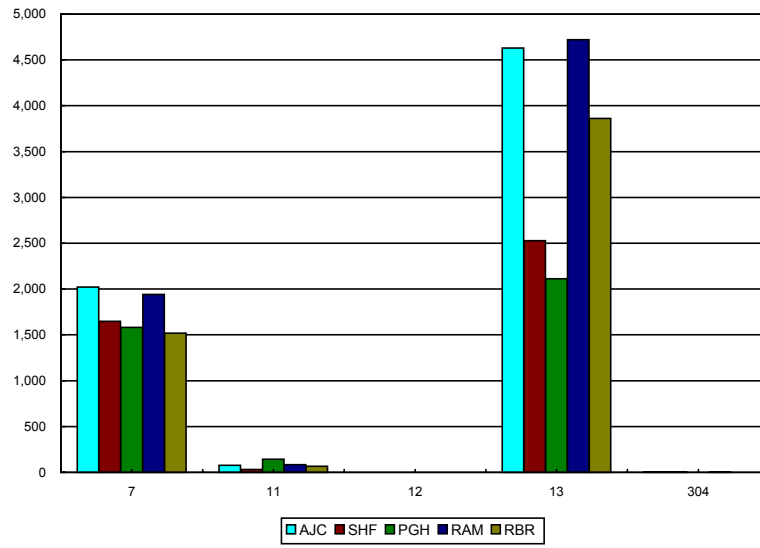
	ENDING JAN 05	ENDING JAN 04	ENDING JAN 03	% CHANGE 05/04	% CHANGE 05/03
Bankruptcy Case Filings	26198	31300	32093	-16.30	-18.37
Bankruptcy Case Closings	30287	31218	31055	-2.98	-2.47
Adversary Filings	1336	2668	1607	-49.93	-16.86
Adversary Closings	1735	2475	1359	-29.90	27.67

MONTHLY COMPARISON

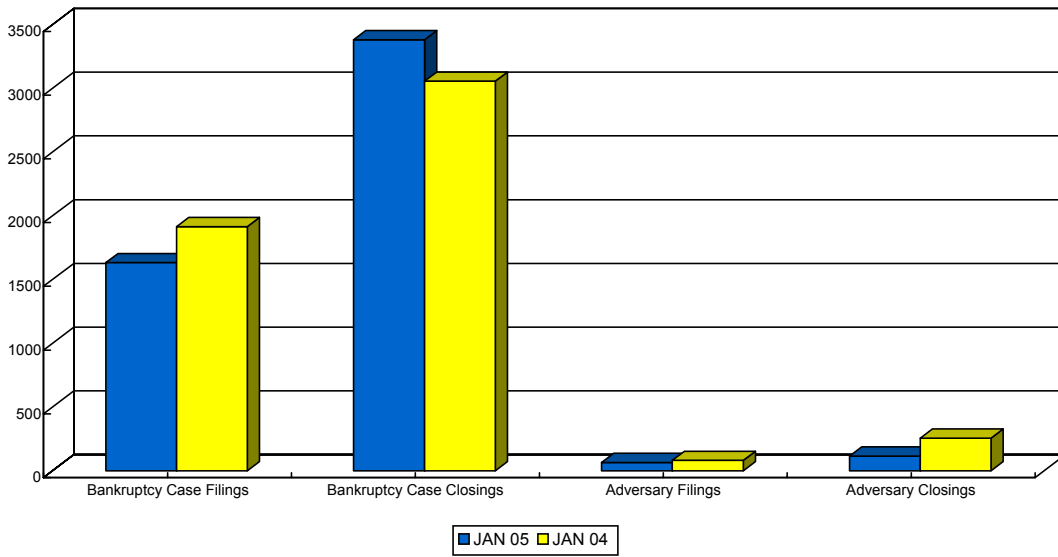
	JAN 05	JAN 04	PERCENT CHANGE
Bankruptcy Case Filings	1632	1914	-14.73
Bankruptcy Case Closings	3380	3055	10.64
Adversary Filings	64	81	-20.99
Adversary Closings	115	256	-55.08

*Filings and Closings for Dade Division includes Monroe County
 Filings and Closings for Palm Beach Division includes Indian River, Highlands, Martin,
 St. Lucie & Okeechobee Counties*

TOTAL PENDING CASELOAD BY JUDGE/CHAPTER



CALENDAR YEAR-TO-DATE COMPARISON



12-MONTH/THREE YEAR COMPARISON

