

UNITED STATES BANKRUPTCY COURT

SOUTHERN DISTRICT OF FLORIDA

*51 S.W. 1st Avenue
Room 1401
Miami, FL 33130*

*Karen Eddy
Clerk of Court*



MONTHLY STATISTICAL REPORT

JANUARY 2004

MONTHLY STATISTICAL REPORT

TABLE OF CONTENTS

	<u><i>page</i></u>
<i>I. MONTHLY SARD SUMMARY REPORT</i>	<i>2</i>
<i>II. BK CASE FILINGS SUMMARY REPORT</i>	<i>3</i>
<i>III. BK CASE CLOSINGS SUMMARY REPORT</i>	<i>4</i>
<i>IV. AP CASE FILINGS SUMMARY REPORT</i>	<i>5</i>
<i>V. AP CASE CLOSINGS SUMMARY REPORT</i>	<i>6</i>
<i>VI. BK PRO SE CASES FILING SUMMARY REPORT</i>	<i>7</i>
<i>VII. PENDING CASELOAD REPORT BY JUDGE/CHAPTER</i>	<i>8</i>
<i>VIII. DIVISIONAL CASELOAD REPORT</i>	<i>9</i>
<i>IX. CASE FILING BREAKDOWN BY COUNTY</i>	<i>10</i>
<i>X. BREAKDOWN BY NATURE OF DEBTOR</i>	<i>11</i>
<i>XI. BREAKDOWN BY COUNTY / NATURE - CONSUMER</i>	<i>12</i>
<i>XII. BREAKDOWN BY COUNTY / NATURE - BUSINESS</i>	<i>13</i>
<i>XIII. SUMMARIES AND GRAPHS</i>	<i>14 - 18</i>

JANUARY 2004
MONTHLY SARD REPORT SUMMARY

I. BC101 REPORT OF BANKRUPTCY CASES

	AJC	SHF	PGH	RAM	RBR	TOTAL
Pending Prior Month	8,090	4,781	5,317	8,253	5,144	31,585
Cases Filed	408	345	385	403	369	1,910
Reopened	13	8	17	9	5	52
Split Cases	1	0	1	0	0	2
Trans. In	0	1	1	0	0	2
Reassigned To	0	1	0	0	1	2
Trans. Out	0	0	0	0	0	0
Reassigned From	0	1	1	0	0	2
Cases Closed	671	555	527	778	524	3,055
Cases Pending	7,841	4,580	5,193	7,887	4,995	30,496

II. BC109 REPORT OF ADVERSARY CASES

	AJC	SHF	PGH	RAM	RBR	TOTAL
Pending Prior Month	97	189	416	182	459	1,343
Cases Filed	9	12	14	27	19	81
Reassigned To	0	0	0	0	0	0
Cases Reopened	0	0	0	0	0	0
Cases Closed	21	27	94	42	72	256
Reassigned From	0	0	0	0	0	0
Cases Pending	85	174	336	167	406	1,168

IV. MONTHLY REPORT OF TRIALS AND OTHER ACTIVITY

	Contested Proceedings	Miscellaneous Proceedings	Total Hours in Court
AJC	8	27	35
SHF	22	28	50
PGH	4	25	29
RAM	6	32	38
RBR	8	33	41
Total	48	145	193

UNITED STATES BANKRUPTCY COURT
Southern District of Florida

CASE FILINGS SUMMARY REPORT
For Cases Filed from 01/01/2004 to 01/31/2004
Run Date: 02/04/04

Run Time 16:48

Divisional Breakdown

		Dade					Broward					Palm Beach				
Ch		7	11	12	13	304	7	11	12	13	304	7	11	12	13	304
AJC	306		10	0	92	0	0	0	0	0	0	0	0	0	0	0
SHF	0	0	0	0	0	0	0	0	0	0	268	1	0	76	0	
PGH	0	0	0	40	0	168	0	0	83	0	93	1	0	0	0	
RAM	305	7	0	91	0	0	0	0	0	0	0	0	0	0	0	
RBR	0	0	0	39	0	254	1	0	75	0	0	0	0	0	0	

Tot	611	17	0	262	0	422	1	0	158	0	361	2	0	76	0	
Divisional Totals		890					581					439				

Totals By Judge

	Chapter 7	Section 304	Chapter 11	Chapter 12	Chapter 13	Totals
AJC	306	0	10	0	92	408
SHF	268	0	1	0	76	345
PGH	261	0	1	0	123	385
RAM	305	0	7	0	91	403
RBR	254	0	1	0	114	369

Totals	1394	0	20	0	496	

Grand Total: 1910

"TOTAL DOES NOT INCLUDE SPLIT, TRANSFERRED IN CASES AND INTRA-DISTRICT CASES FILED PRIOR TO THIS MONTH"

UNITED STATES BANKRUPTCY COURT
Southern District of Florida

CASE CLOSING SUMMARY REPORT
For Cases Closed from 01/01/2004 to 01/31/2004
Run Date: 02/04/04

Run Time 16:45

Divisional Breakdown

Dade						Broward						Palm Beach					
Ch	7	11	12	13	304	7	11	12	13	304	7	11	12	13	304		
AJC	493	3	0	175	0	0	0	0	0	0	0	0	0	0	0		
SHF	0	0	0	0	0	0	0	0	0	0	435	1	0	119	0		
PGH	5	0	0	34	0	261	3	0	84	0	139	1	0	0	0		
RAM	545	7	0	226	0	0	0	0	0	0	0	0	0	0	0		
RBR	4	0	0	49	0	373	2	0	96	0	0	0	0	0	0		

Tot	1047	10	0	484	0	634	5	0	180	0	574	2	0	119	0		
Divisional Totals	1541				819						695						

Totals By Judge

	Chapter 7	Section 304	Chapter 11	Chapter 12	Chapter 13	Totals
AJC	493	0	3	0	175	671
SHF	435	0	1	0	119	555
PGH	405	0	4	0	118	527
RAM	545	0	7	0	226	778
RBR	377	0	2	0	145	524

Totals	2255	0	17	0	783	
Grand Total:	3055					

UNITED STATES BANKRUPTCY COURT
Southern District of FloridaAdversary Proceedings Case Filing Report
For Cases Filed from 01/01/2004 to 01/31/2004
Run Time 15:59

Run Date: 02/03/04

Divisional Breakdown

	Dade	Broward	Palm Beach	Totals
AJC	9	0	0	9
SHF	0	0	12	12
PGH	0	9	5	14
RAM	27	0	0	27
RBR	0	19	0	19

Totals	36	28	17	81

UNITED STATES BANKRUPTCY COURT
Southern District of FloridaAdversary Proceedings Case Closing Report
For Cases Closed from 01/01/2004 to 01/31/2004
Run Time 09:11

Run Date: 02/10/04

Divisional Breakdown

	Dade	Broward	Palm Beach	Totals
AJC	21	0	0	21
SHF	0	0	27	27
PGH	0	62	32	94
RAM	42	0	0	42
RBR	1	71	0	72

Totals	64	133	59	256

UNITED STATES BANKRUPTCY COURT
SOUTHERN DISTRICT OF FLORIDA

BANKRUPTCY PRO SE CASES FILING SUMMARY REPORT
For Cases Filed from 01/01/2004 to 01/31/2004

Run Date: 02/03/04

Run Time 16:51

Divisional Breakdown

	Dade					Broward					Palm Beach				
Ch	7	11	12	13	304	7	11	12	13	304	7	11	12	13	304
AJC	11	0	0	13	0	0	0	0	0	0	0	0	0	0	0
SHF	0	0	0	0	0	0	0	0	0	0	55	0	0	12	0
PGH	0	0	0	9	0	46	0	0	16	0	22	0	0	0	0
RAM	26	0	0	14	0	0	0	0	0	0	0	0	0	0	0
RBR	0	0	0	12	0	61	0	0	13	0	0	0	0	0	0

Tot	37	0	0	48	0	107	0	0	29	0	77	0	0	12	0
Divisional Totals					85					136					89

Totals By Judge

	Chapter 7	Section 506	Chapter 11	Chapter 12	Chapter 13	Totals
AJC	11	0	0	0	13	24
SHF	55	0	0	0	12	67
PGH	68	0	0	0	25	93
RAM	26	0	0	0	14	40
RBR	61	0	0	0	25	86

Totals	221	0	0	0	89	310
Grand Total:	310					

**PENDING CASELOAD REPORTS BY JUDGE/CHAPTER
JANUARY 2004**

	7	11	12	13	304	ACT	TOTALS
AJC							
Pending Prior Month	2,245	88	1	5,754	2	0	8,090
Cases Filed	306	10	0	92	0	0	408
Reopened	11	0	0	2	0	0	13
Split Cases	1	0	0	0	0	0	1
Transferred In	0	0	0	0	0	0	0
Reassigned To	0	0	0	0	0	0	0
Converted To	14	0	0	0	0	0	14
Transferred Out	0	0	0	0	0	0	0
Reassigned From	0	0	0	0	0	0	0
Converted From	0	0	0	14	0	0	14
Cases Closed	493	3	0	175	0	0	671
Total Pending	2,084	95	1	5,659	2	0	7,841
SHF							
Pending Prior Month	1,967	32	0	2,775	7	0	4,781
Cases Filed	268	1	0	76	0	0	345
Reopened	2	0	0	6	0	0	8
Split Cases	0	0	0	0	0	0	0
Transferred In	1	0	0	0	0	0	1
Reassigned To	1	0	0	0	0	0	1
Converted To	6	1	0	7	0	0	14
Transferred Out	0	0	0	0	0	0	0
Reassigned From	1	0	0	0	0	0	1
Converted From	8	1	0	5	0	0	14
Cases Closed	435	1	0	119	0	0	555
Total Pending	1,801	32	0	2,740	7	0	4,580
PGH							
Pending Prior Month	1,928	156	0	3,232	1	0	5,317
Cases Filed	261	1	0	123	0	0	385
Reopened	11	0	0	6	0	0	17
Split Cases	0	0	0	1	0	0	1
Transferred In	1	0	0	0	0	0	1
Reassigned To	0	0	0	0	0	0	0
Converted To	6	0	0	4	0	0	10
Transferred Out	0	0	0	0	0	0	0
Reassigned From	1	0	0	0	0	0	1
Converted From	4	0	0	6	0	0	10
Cases Closed	405	4	0	118	0	0	527
Total Pending	1,797	153	0	3,242	1	0	5,193
RAM							
Pending Prior Month	2,321	149	0	5,779	4	0	8,253
Cases Filed	305	7	0	91	0	0	403
Reopened	8	0	0	1	0	0	9
Split Cases	0	0	0	0	0	0	0
Transferred In	0	0	0	0	0	0	0
Reassigned To	0	0	0	0	0	0	0
Converted To	12	1	0	1	0	0	14
Transferred Out	0	0	0	0	0	0	0
Reassigned From	0	0	0	0	0	0	0
Converted From	2	0	0	12	0	0	14
Cases Closed	545	7	0	226	0	0	778
Total Pending	2,099	150	0	5,634	4	0	7,887
RBR							
Pending Prior Month	1,846	84	0	3,214	0	0	5,144
Cases Filed	254	1	0	114	0	0	369
Reopened	2	0	0	3	0	0	5
Split Cases	0	0	0	0	0	0	0
Transferred In	0	0	0	0	0	0	0
Reassigned To	1	0	0	0	0	0	1
Converted To	12	1	0	3	0	0	16
Transferred Out	0	0	0	0	0	0	0
Reassigned From	0	0	0	0	0	0	0
Converted From	4	1	0	11	0	0	16
Cases Closed	377	2	0	145	0	0	524
Total Pending	1,734	83	0	3,178	0	0	4,995
GRAND TOTAL:	9,515	513	1	20,453	14	0	30,496

AJC PENDING CASE SUMMARY

CHAPTER	DADE DIVISION	BROWARD DIVISION	PALM BEACH DIVISION	TOTAL
7	2,081	1	2	2,084
11	92	3	0	95
12	1	0	0	1
13	5,659	0	0	5,659
304	2	0	0	2
Sub-Total	7,835	4	2	7,841
Act Cases	0	0	0	0
GRAND TOTALS	7,835	4	2	7,841

SHF PENDING CASE SUMMARY

CHAPTER	DADE DIVISION	BROWARD DIVISION	PALM BEACH DIVISION	TOTAL
7	3	2	1,796	1,801
11	0	0	32	32
12	0	0	0	0
13	0	0	2,740	2,740
304	0	0	7	7
Sub-Total	3	2	4,575	4,580
Act Cases	0	0	0	0
GRAND TOTALS	3	2	4,575	4,580

PGH PENDING CASE SUMMARY

CHAPTER	DADE DIVISION	BROWARD DIVISION	PALM BEACH DIVISION	TOTAL
7	28	1,127	642	1,797
11	1	106	46	153
12	0	0	0	0
13	1,021	2,220	1	3,242
304	0	1	0	1
Sub-Total	1,050	3,454	689	5,193
Act Cases	0	0	0	0
GRAND TOTALS	1,050	3,454	689	5,193

RAM PENDING CASE SUMMARY

CHAPTER	DADE DIVISION	BROWARD DIVISION	PALM BEACH DIVISION	TOTAL
7	2,085	0	14	2,099
11	149	0	1	150
12	0	0	0	0
13	5,634	0	0	5,634
304	4	0	0	4
Sub-Total	7,872	0	15	7,887
Act Cases	0	0	0	0
GRAND TOTALS	7,872	0	15	7,887

RBR PENDING CASE SUMMARY

CHAPTER	DADE DIVISION	BROWARD DIVISION	PALM BEACH DIVISION	TOTAL
7	29	1,705	0	1,734
11	0	83	0	83
12	0	0	0	0
13	988	2,190	0	3,178
304	0	0	0	0
Sub-Total	1,017	3,978	0	4,995
Act Cases	0	0	0	0
GRAND TOTALS	1,017	3,978	0	4,995

DISTRICT TOTALS	17,777	7,438	5,281	30,496
------------------------	---------------	--------------	--------------	---------------

**JANUARY 2004
CASE FILING SUMMARY BY COUNTY**

DADE COUNTY - 12025						
	7	11	12	13	304	TOTAL
AJC	302	10	0	91	0	403
SHF	0	0	0	0	0	0
PGH	0	0	0	40	0	40
RAM	301	7	0	91	0	399
RBR	0	0	0	39	0	39
Sub-Total	603	17	0	261	0	881

MONROE COUNTY - 12087						
	7	11	12	13	304	TOTAL
AJC	5	0	0	1	0	6
SHF	0	0	0	0	0	0
PGH	0	0	0	0	0	0
RAM	4	0	0	0	0	4
RBR	0	0	0	0	0	0
Sub-Total	9	0	0	1	0	10
						Division Total 891

BROWARD COUNTY - 12011						
	7	11	12	13	304	TOTAL
AJC	0	0	0	0	0	0
SHF	0	0	0	0	0	0
PGH	168	0	0	84	0	252
RAM	0	0	0	0	0	0
RBR	254	1	0	75	0	330
Sub-Total	422	1	0	159	0	582
						Division Total 582

HIGHLANDS COUNTY - 12055						
	7	11	12	13	304	TOTAL
AJC	0	0	0	0	0	0
SHF	15	0	0	2	0	17
PGH	0	0	0	0	0	0
RAM	0	0	0	0	0	0
RBR	0	0	0	0	0	0
Sub-Total	15	0	0	2	0	17

INDIAN RIVER COUNTY - 12061						
	7	11	12	13	304	TOTAL
AJC	0	0	0	0	0	0
SHF	19	0	0	5	0	24
PGH	0	0	0	0	0	0
RAM	0	0	0	0	0	0
RBR	0	0	0	0	0	0
Sub-Total	19	0	0	5	0	24

MARTIN COUNTY - 12085						
	7	11	12	13	304	TOTAL
AJC	0	0	0	0	0	0
SHF	13	0	0	2	0	15
PGH	9	0	0	0	0	9
RAM	0	0	0	0	0	0
RBR	0	0	0	0	0	0
Sub-Total	22	0	0	2	0	24

OKEECHOBEE COUNTY - 12093						
	7	11	12	13	304	TOTAL
AJC	0	0	0	0	0	0
SHF	12	0	0	5	0	17
PGH	0	0	0	0	0	0
RAM	0	0	0	0	0	0
RBR	0	0	0	0	0	0
Sub-Total	12	0	0	5	0	17

PALM BEACH COUNTY - 12099						
	7	11	12	13	304	TOTAL
AJC	0	0	0	0	0	0
SHF	159	1	0	46	0	206
PGH	83	1	0	0	0	84
RAM	0	0	0	0	0	0
RBR	0	0	0	0	0	0
Sub-Total	242	2	0	46	0	290

ST. LUCIE - 12111						
	7	11	12	13	304	TOTAL
AJC	0	0	0	0	0	0
SHF	51	0	0	16	0	67
PGH	2	0	0	0	0	2
RAM	0	0	0	0	0	0
RBR	0	0	0	0	0	0
Sub-Total	53	0	0	16	0	69
						Division Total 441

GRAND TOTAL						
	7	11	12	13	304	TOTAL
	1397	20	0	497	0	1914

JANUARY 2004
CASE FILING SUMMARY BY NATURE OF DEBTOR/DIVISION

CHAPTER	BUSINESS				CONSUMER				TOTAL
	DADE	BROWARD	PALM BCH	DIV. TOTAL	DADE	BROWARD	PALM BCH	DIV. TOTAL	
7	9	8	14	31	603	414	349	1366	1397
11	15	1	2	18	2	0	0	2	20
12	0	0	0	0	0	0	0	0	0
13	0	1	5	6	262	158	71	491	497
304	0	0	0	0	0	0	0	0	0
TOTAL	24	10	21	55	867	572	420	1859	1914

DIVISIONAL BUSINESS CASE FILING SUMMARY

DADE DIVISION

CHAPTER	AJC	SHF	PGH	RAM	RBR	TOTAL
7	4	0	0	5	0	9
11	9	0	0	6	0	15
12	0	0	0	0	0	0
13	0	0	0	0	0	0
304	0	0	0	0	0	0
Sub-Total	13	0	0	11	0	24

BROWARD DIVISION

CHAPTER	AJC	SHF	PGH	RAM	RBR	TOTAL
7	0	0	6	0	2	8
11	0	0	0	0	1	1
12	0	0	0	0	0	0
13	0	0	1	0	0	1
304	0	0	0	0	0	0
Sub-Total	0	0	7	0	3	10

PALM BEACH DIVISION

CHAPTER	AJC	SHF	PGH	RAM	RBR	TOTAL
7	0	10	4	0	0	14
11	0	1	1	0	0	2
12	0	0	0	0	0	0
13	0	5	0	0	0	5
304	0	0	0	0	0	0
Sub-Total	0	16	5	0	0	21
GRAND TOTAL	13	16	12	11	3	55

DIVISIONAL CONSUMER CASE FILING SUMMARY

DADE DIVISION

CHAPTER	AJC	SHF	PGH	RAM	RBR	TOTAL
7	303	0	0	300	0	603
11	1	0	0	1	0	2
12	0	0	0	0	0	0
13	92	0	40	91	39	262
304	0	0	0	0	0	0
Sub-Total	396	0	40	392	39	867

BROWARD DIVISION

CHAPTER	AJC	SHF	PGH	RAM	RBR	TOTAL
7	0	0	162	0	252	414
11	0	0	0	0	0	0
12	0	0	0	0	0	0
13	0	0	83	0	75	158
304	0	0	0	0	0	0
Sub-Total	0	0	245	0	327	572

PALM BEACH DIVISION

CHAPTER	AJC	SHF	PGH	RAM	RBR	TOTAL
7	0	259	90	0	0	349
11	0	0	0	0	0	0
12	0	0	0	0	0	0
13	0	71	0	0	0	71
304	0	0	0	0	0	0
Sub-Total	0	330	90	0	0	420
GRAND TOTAL	396	330	375	392	366	1859

CASE FILING SUMMARY BY COUNTY / CONSUMER - BUSINESS CONSUMERS

DADE COUNTY - 12025						
	7	11	12	13	304	TOTAL
AJC	298	1	0	91	0	390
SHF	0	0	0	0	0	0
PGH	0	0	0	40	0	40
RAM	296	1	0	91	0	388
RBR	0	0	0	39	0	39
Sub-Total	594	2	0	261	0	857

MONROE COUNTY - 12087						
	7	11	12	13	304	TOTAL
AJC	5	0	0	1	0	6
SHF	0	0	0	0	0	0
PGH	0	0	0	0	0	0
RAM	4	0	0	0	0	4
RBR	0	0	0	0	0	0
Sub-Total	9	0	0	1	0	10
						Division Total 867

BROWARD COUNTY - 12011						
	7	11	12	13	304	TOTAL
AJC	0	0	0	0	0	0
SHF	0	0	0	0	0	0
PGH	162	0	0	83	0	245
RAM	0	0	0	0	0	0
RBR	252	0	0	75	0	327
Sub-Total	414	0	0	158	0	572
						Division Total 572

HIGHLANDS COUNTY - 12055						
	7	11	12	13	304	TOTAL
AJC	0	0	0	0	0	0
SHF	15	0	0	2	0	17
PGH	0	0	0	0	0	0
RAM	0	0	0	0	0	0
RBR	0	0	0	0	0	0
Sub-Total	15	0	0	2	0	17

INDIAN RIVER COUNTY - 12061						
	7	11	12	13	304	TOTAL
AJC	0	0	0	0	0	0
SHF	16	0	0	3	0	19
PGH	0	0	0	0	0	0
RAM	0	0	0	0	0	0
RBR	0	0	0	0	0	0
Sub-Total	16	0	0	3	0	19

MARTIN COUNTY - 12085						
	7	11	12	13	304	TOTAL
AJC	0	0	0	0	0	0
SHF	13	0	0	2	0	15
PGH	9	0	0	0	0	9
RAM	0	0	0	0	0	0
RBR	0	0	0	0	0	0
Sub-Total	22	0	0	2	0	24

OKEECHOBEE COUNTY - 12093						
	7	11	12	13	304	TOTAL
AJC	0	0	0	0	0	0
SHF	12	0	0	4	0	16
PGH	0	0	0	0	0	0
RAM	0	0	0	0	0	0
RBR	0	0	0	0	0	0
Sub-Total	12	0	0	4	0	16

PALM BEACH COUNTY - 12099						
	7	11	12	13	304	TOTAL
AJC	0	0	0	0	0	0
SHF	154	0	0	44	0	198
PGH	79	0	0	0	0	79
RAM	0	0	0	0	0	0
RBR	0	0	0	0	0	0
Sub-Total	233	0	0	44	0	277

ST. LUCIE - 12111						
	7	11	12	13	304	TOTAL
AJC	0	0	0	0	0	0
SHF	49	0	0	16	0	65
PGH	2	0	0	0	0	2
RAM	0	0	0	0	0	0
RBR	0	0	0	0	0	0
Sub-Total	51	0	0	16	0	67
						Division Total 420

GRAND TOTAL						
	7	11	12	13	304	TOTAL
	1366	2	0	491	0	1859

CASE FILING SUMMARY BY COUNTY / CONSUMER - BUSINESS
BUSINESS

DADE COUNTY - 12025						
	7	11	12	13	304	TOTAL
AJC	4	9	0	0	0	13
SHF	0	0	0	0	0	0
PGH	0	0	0	0	0	0
RAM	5	6	0	0	0	11
RBR	0	0	0	0	0	0
Sub-Total	9	15	0	0	0	24

MONROE COUNTY - 12087						
	7	11	12	13	304	TOTAL
AJC	0	0	0	0	0	0
SHF	0	0	0	0	0	0
PGH	0	0	0	0	0	0
RAM	0	0	0	0	0	0
RBR	0	0	0	0	0	0
Sub-Total	0	0	0	0	0	0

BROWARD COUNTY - 12011						
	7	11	12	13	304	TOTAL
AJC	0	0	0	0	0	0
SHF	0	0	0	0	0	0
PGH	6	0	0	1	0	7
RAM	0	0	0	0	0	0
RBR	2	1	0	0	0	3
Sub-Total	8	1	0	1	0	10

HIGHLANDS COUNTY - 12055						
	7	11	12	13	304	TOTAL
AJC	0	0	0	0	0	0
SHF	0	0	0	0	0	0
PGH	0	0	0	0	0	0
RAM	0	0	0	0	0	0
RBR	0	0	0	0	0	0
Sub-Total	0	0	0	0	0	0

INDIAN RIVER COUNTY - 12061						
	7	11	12	13	304	TOTAL
AJC	0	0	0	0	0	0
SHF	3	0	0	2	0	5
PGH	0	0	0	0	0	0
RAM	0	0	0	0	0	0
RBR	0	0	0	0	0	0
Sub-Total	3	0	0	2	0	5

MARTIN COUNTY - 12085						
	7	11	12	13	304	TOTAL
AJC	0	0	0	0	0	0
SHF	0	0	0	0	0	0
PGH	0	0	0	0	0	0
RAM	0	0	0	0	0	0
RBR	0	0	0	0	0	0
Sub-Total	0	0	0	0	0	0

OKEECHOBEE COUNTY - 12093						
	7	11	12	13	304	TOTAL
AJC	0	0	0	0	0	0
SHF	0	0	0	1	0	1
PGH	0	0	0	0	0	0
RAM	0	0	0	0	0	0
RBR	0	0	0	0	0	0
Sub-Total	0	0	0	1	0	1

PALM BEACH COUNTY - 12099						
	7	11	12	13	304	TOTAL
AJC	0	0	0	0	0	0
SHF	5	1	0	2	0	8
PGH	4	1	0	0	0	5
RAM	0	0	0	0	0	0
RBR	0	0	0	0	0	0
Sub-Total	9	2	0	2	0	13

ST. LUCIE - 12111						
	7	11	12	13	304	TOTAL
AJC	0	0	0	0	0	0
SHF	2	0	0	0	0	2
PGH	0	0	0	0	0	0
RAM	0	0	0	0	0	0
RBR	0	0	0	0	0	0
Sub-Total	2	0	0	0	0	2

GRAND TOTAL						
	7	11	12	13	304	TOTAL
	31	18	0	6	0	55

AJC	CH 7	CH 11	CH 12	CH 13	SEC 304	TOTAL
JAN	307	10	0	92	0	409
FEB						0
MAR						0
APR						0
MAY						0
JUN						0
JUL						0
AUG						0
SEP						0
OCT						0
NOV						0
DEC						0
TOTALS	307	10	0	92	0	409

SHF	CH 7	CH 11	CH 12	CH 13	SEC 304	TOTAL
JAN	269	1	0	76	0	346
FEB						0
MAR						0
APR						0
MAY						0
JUN						0
JUL						0
AUG						0
SEP						0
OCT						0
NOV						0
DEC						0
TOTALS	269	1	0	76	0	346

PGH	CH 7	CH 11	CH 12	CH 13	SEC 304	TOTAL
JAN	262	1	0	124		387
FEB						0
MAR						0
APR						0
MAY						0
JUN						0
JUL						0
AUG						0
SEP						0
OCT						0
NOV						0
DEC						0
TOTALS	262	1	0	124	0	387

RAM	CH 7	CH 11	CH 12	CH 13	SEC 304	TOTAL
JAN	305	7	0	91	0	403
FEB						0
MAR						0
APR						0
MAY						0
JUN						0
JUL						0
AUG						0
SEP						0
OCT						0
NOV						0
DEC						0
TOTALS	305	7	0	91	0	403

RBR	CH 7	CH 11	CH 12	CH 13	SEC 304	TOTAL
JAN	254	1	0	114	0	369
FEB						0
MAR						0
APR						0
MAY						0
JUN						0
JUL						0
AUG						0
SEP						0
OCT						0
NOV						0
DEC						0
TOTALS	254	1	0	114	0	369

2004 YEAR-TO-DATE COMPARISON OF BANKRUPTCY CASE FILINGS
BY JUDGE

	AJC	SHF	PGH	RAM	RBR	TOTAL
JAN	409	346	387	403	369	1914
FEB	0	0	0	0	0	0
MAR	0	0	0	0	0	0
APR	0	0	0	0	0	0
MAY	0	0	0	0	0	0
JUN	0	0	0	0	0	0
JUL	0	0	0	0	0	0
AUG	0	0	0	0	0	0
SEP	0	0	0	0	0	0
OCT	0	0	0	0	0	0
NOV	0	0	0	0	0	0
DEC	0	0	0	0	0	0
TOTALS	409	346	387	403	369	1914
% of Total	21.37	18.08	20.22	21.06	19.28	

2002 YEAR-TO-DATE COMPARISON OF BANKRUPTCY CASE FILINGS
BY JUDGE/CHAPTER

	CH 7	CH 11	CH 12	CH 13	SEC 304	TOTAL
AJC	307	10	0	92	0	409
SHF	269	1	0	76	0	346
PGH	262	1	0	124	0	387
RAM	305	7	0	91	0	403
RBR	254	1	0	114	0	369
TOTALS	1397	20	0	497	0	1914

CALENDAR YEAR-TO-DATE COMPARISON

	ENDING JAN04	ENDING JAN03	PERCENT CHANGE
Bankruptcy Case Filings	1914	2269	-15.65
Bankruptcy Case Closings	3055	3209	-4.80
Adversary Filings	81	184	-55.98
Adversary Closings	256	117	118.80

12-MONTH/THREE YEAR COMPARISON

	ENDING JAN04	ENDING JAN03	ENDING JAN02	% CHANGE 04/03	% CHANGE 04/02
Bankruptcy Case Filings	30834	32093	31606	-3.92	-2.44
Bankruptcy Case Closings	31218	31055	27997	0.52	11.50
Adversary Filings	2668	1607	1197	66.02	122.89
Adversary Closings	2475	1359	1110	82.12	122.97

MONTHLY COMPARISON

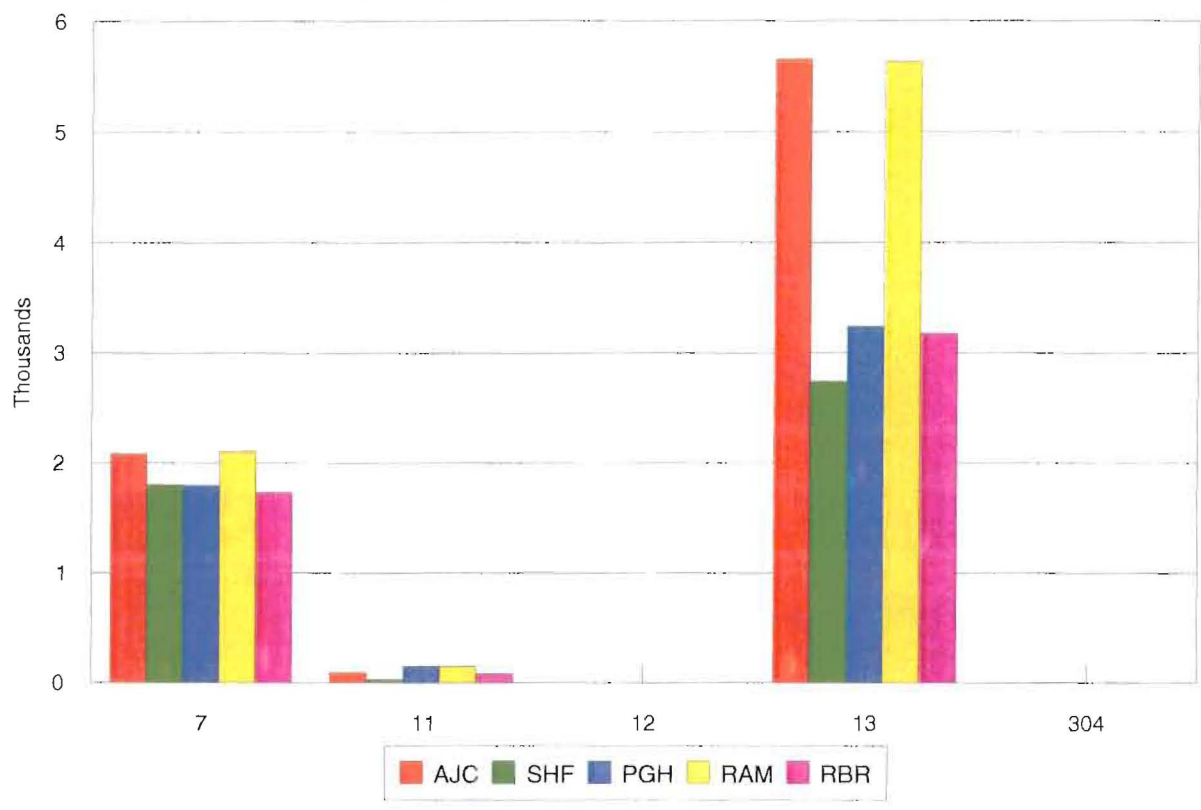
	JAN04	JAN03	PERCENT CHANGE
Bankruptcy Case Filings	1914	2269	-15.65
Bankruptcy Case Closings	3055	3209	-4.80
Adversary Filings	81	184	-55.98
Adversary Closings	256	117	118.80

Filings and Closings for Dade Division includes Monroe County

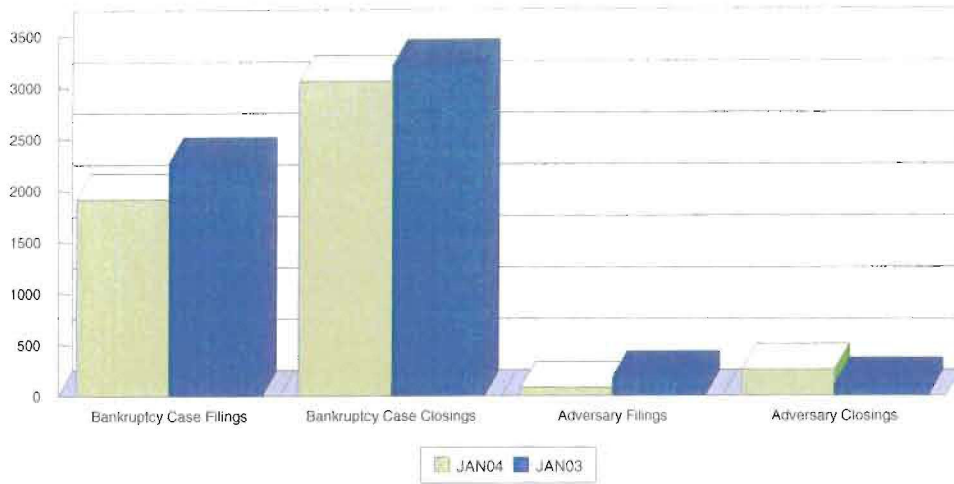
Filings and Closings for Palm Beach Division includes Indian River, Highlands, Martin,

St. Lucie & Okeechobee Counties

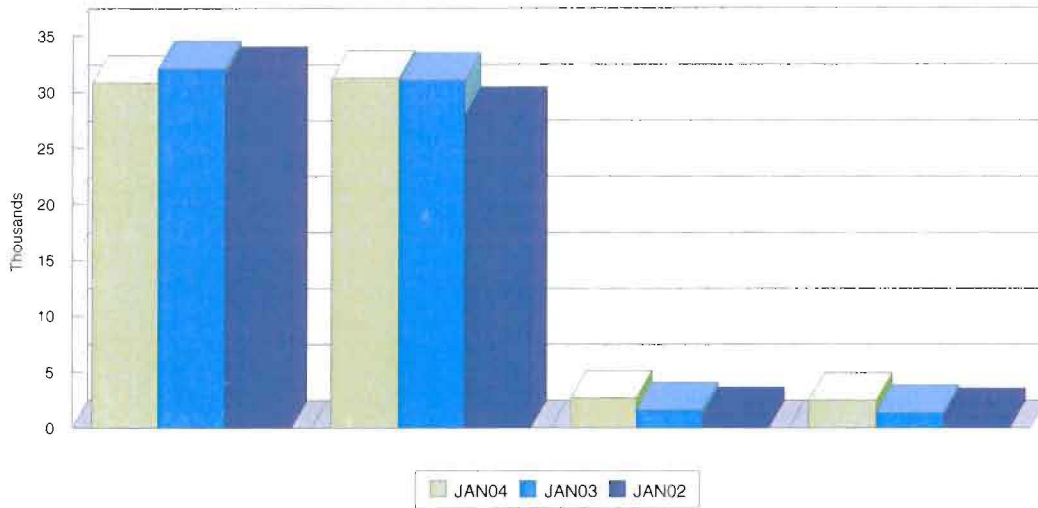
TOTAL PENDING CASELOAD BY JUDGE/CHAPTER



CALENDAR YEAR-TO-DATE COMPARISON



12-MONTH/THREE YEAR COMPARISON



MONTHLY COMPARISON

